



NOTICE OF PREPARATION

of the Big Basin Redwoods State Park General Plan Supplemental Draft EIR for the Reimagining Big Basin Redwoods State Park Facilities Management Plan and General Plan Amendments

Date: June 16, 2025

To: State Clearinghouse, Responsible and Trustee Agencies, and Interested Individuals and Organizations

Subject: Notice of Preparation of a Supplemental Environmental Impact Report to the 2013 Big Basin Redwoods State Park General Plan Environmental Impact Report (State Clearinghouse No. 2001112104) for the Reimagining Big Basin Redwoods State Park Facilities Management Plan and General Plan Amendments

Lead Agency: California Department of Parks and Recreation
PO Box 942896
Sacramento, CA 94296-0001
Contact: Will Fourn

NOTICE IS HEREBY GIVEN that the California Department of Parks and Recreation (the Department), as the lead agency, is preparing a Supplemental Environmental Impact Report (EIR) to the 2013 Big Basin Redwoods State Park General Plan EIR (State Clearinghouse No. 2001112104) (2013 General Plan EIR) for the proposed Reimagining Big Basin Redwoods State Park Facilities Management Plan and General Plan amendments (proposed project). The Department has prepared this Notice of Preparation (NOP) pursuant to Section 15082 of the California Environmental Quality Act (CEQA) Guidelines. This NOP informs agencies and the public that an EIR is being prepared to address potential impacts resulting from approval and implementation of the Reimagining Big Basin Redwoods State Park Facilities Management Plan and General Plan amendments. Publication of this NOP provides an opportunity for public comments on the potential environmental impacts to be addressed in the Supplemental EIR. Additional information about the proposed project is available at the project's website: <https://reimaginingbigbasin.org/facilities-management-plan/>. The 2013 General Plan and EIR are available online at the following link: https://www.parks.ca.gov/?page_id=21486.

As mandated by State law, your response must be sent at the earliest possible date, but no later than the close of the 30-day NOP review period at **5:00 p.m. on Friday, July 18, 2025**. If you submit comments on the scope of the Supplemental EIR, you will automatically be added to the distribution list for future notices about the proposed project. Please include ***"Big Basin Redwoods State Park General Plan Supplemental EIR"*** as the subject and submit comments via the mailing address listed above or email Reimagining.BigBasin@parks.ca.gov. Please note that all submitted correspondence and comments become part of the public record.

SCOPING MEETING

State Parks will hold a **virtual** scoping meeting at **6:00 p.m. on Thursday, July 10, 2025**, to provide additional information about the Big Basin Redwoods State Park Facilities Management Plan, General



Plan amendments, and Supplemental EIR process and give interested parties an opportunity to comment on the scope and potential environmental effects of the project to be analyzed in the Supplemental EIR. The meeting can be attended remotely via the Zoom platform at the following link:
<https://us06web.zoom.us/j/86539841770?pwd=W1rHl93J2zpiuUuTzGxL7sExZaphk0.1>

Meeting ID: 865 3984 1770

Passcode: 631900

PROJECT LOCATION

Big Basin Redwoods State Park is in the western, coastal portion of the Santa Cruz Mountains between State Route (SR) 1 and SR 9, which both run north to south. The majority of the park is in Santa Cruz County and a small northern portion is in San Mateo County, as shown in Figure 1, *Regional Vicinity*. The park is surrounded by other parks and open space with communities along SR 9. Big Basin Redwoods State Park encompasses approximately 18,200 acres; however, the proposed project focuses specifically on areas along SR 236 and Sky Meadow Road encompassing approximately 5,500 acres. This area in the eastern part of the park is referred to as the Focus Area and is the location of the proposed project (see Figure 2, *Focus Area*).

PROJECT DESCRIPTION

The proposed project includes amendments to the Big Basin Redwoods State Park General Plan and the adoption of the Reimagining Big Basin Redwoods State Park Facilities Management Plan. The proposed General Plan amendments include text changes to provide clarity in consistency of the 2013 General Plan with the facilities envisioned in the proposed Facilities Management Plan and would expand the park boundary to include parcels that the Department is in the process of acquiring to include in the Big Basin Redwoods State Park. The proposed Facilities Management Plan is a planning document designed to guide the stewardship, management, and use of existing and future facilities consistent with the 2013 General Plan. It would provide guidance and direction for implementing the goals and objectives of the 2013 General Plan EIR, the 2022 Reimagining Big Basin Vision Summary, and the 2023 Big Basin Redwoods State Park Cornerstone Document. Additionally, the proposed project would guide the rebuilding of facilities lost in the 2020 CZU Lightning Complex fire that burned 97 percent of the park and most of its facilities.

The proposed project includes proposed facilities and improvement guidance for 19 identified sites in the five proposed zones in the Focus Area. The sites either hosted pre-fire facilities or have otherwise been identified as suitable facility locations based on sensitive habitat avoidance, access considerations, and slope stability. Facilities included in the proposed project include visitor-serving facilities such as picnic areas, amphitheaters, restrooms, interpretation areas, information desks, a café, and camp stores; overnight facilities like camp sites and cabins; tribal facilities like cultural interpretation sites and centers, outdoor workspaces, and lodging; transportation-related facilities like parking lots, electric vehicle chargers, and shuttle infrastructure; utilities infrastructure like water distribution and storage, wastewater collection and treatment, stormwater, electrical and solar facilities, and



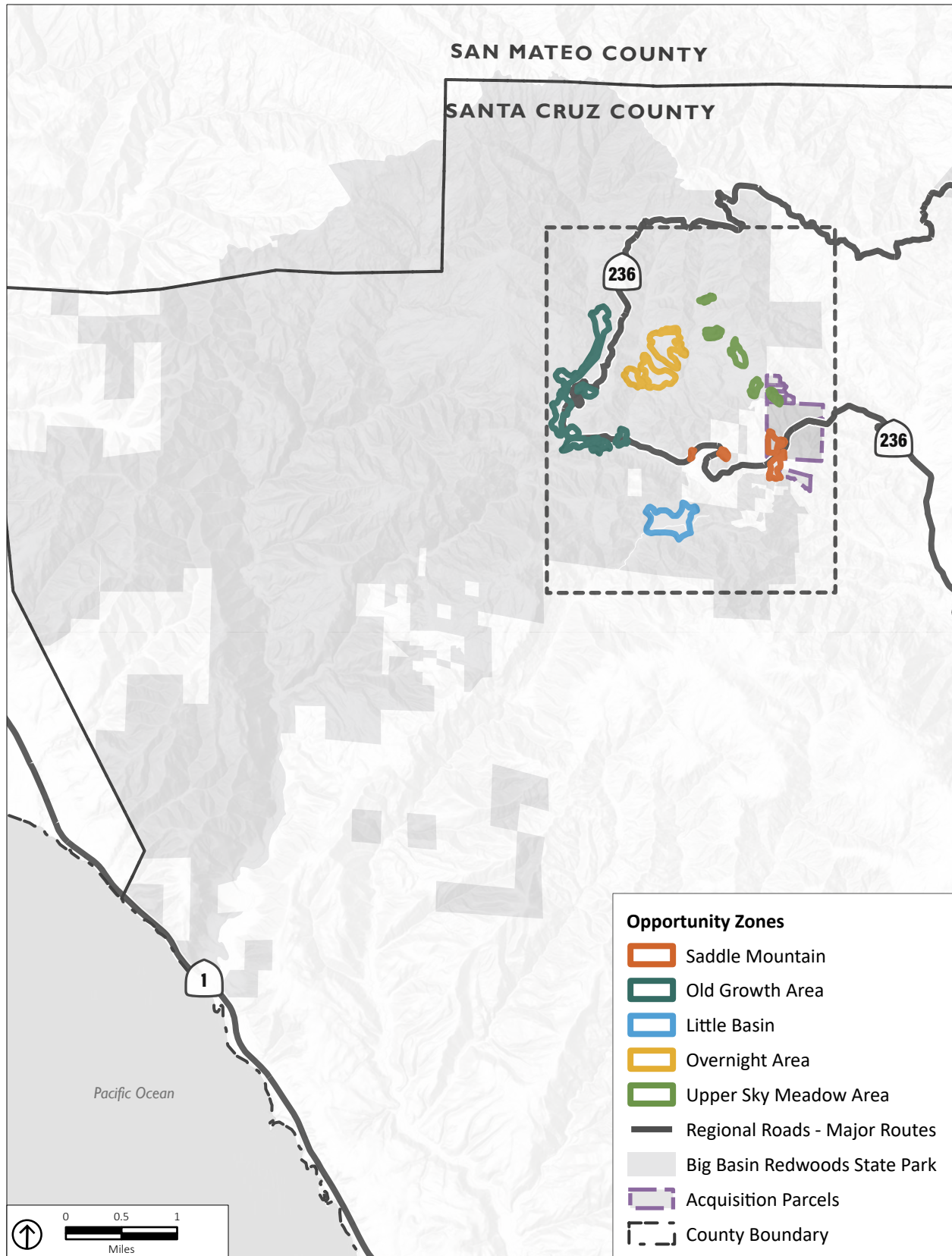
telecommunications; administrative facilities like offices, maintenance shops, and storage; and staff residences. All these facilities would be consistent with the 2013 General Plan and proposed General Plan amendments. Focus Area-wide proposed project components include road and circulation improvements, the introduction of a shuttle program throughout the Focus Area, utility upgrades and replacement, habitat restoration, and an improved emergency response and evacuation plan.

POTENTIAL ENVIRONMENTAL EFFECTS

The Supplemental EIR will determine whether implementation of the proposed project may result in environmental impacts that are new or more severe than those identified in the 2013 General Plan EIR and will use the same significance criteria as used in the 2013 General Plan EIR. CEQA requires that an EIR evaluate alternatives to a project that could reasonably attain the project objectives while reducing any significant impact of the project, as well as considering the “No Project” Alternative (i.e., what could happen if the project were not approved). Attached is an Initial Study comparing the potential environmental effects of the proposed project with those identified in the 2013 General Plan EIR. Based on the analysis completed as part of the attached Initial Study, **biological resources** is the only resource area that will be addressed in the Supplemental EIR.

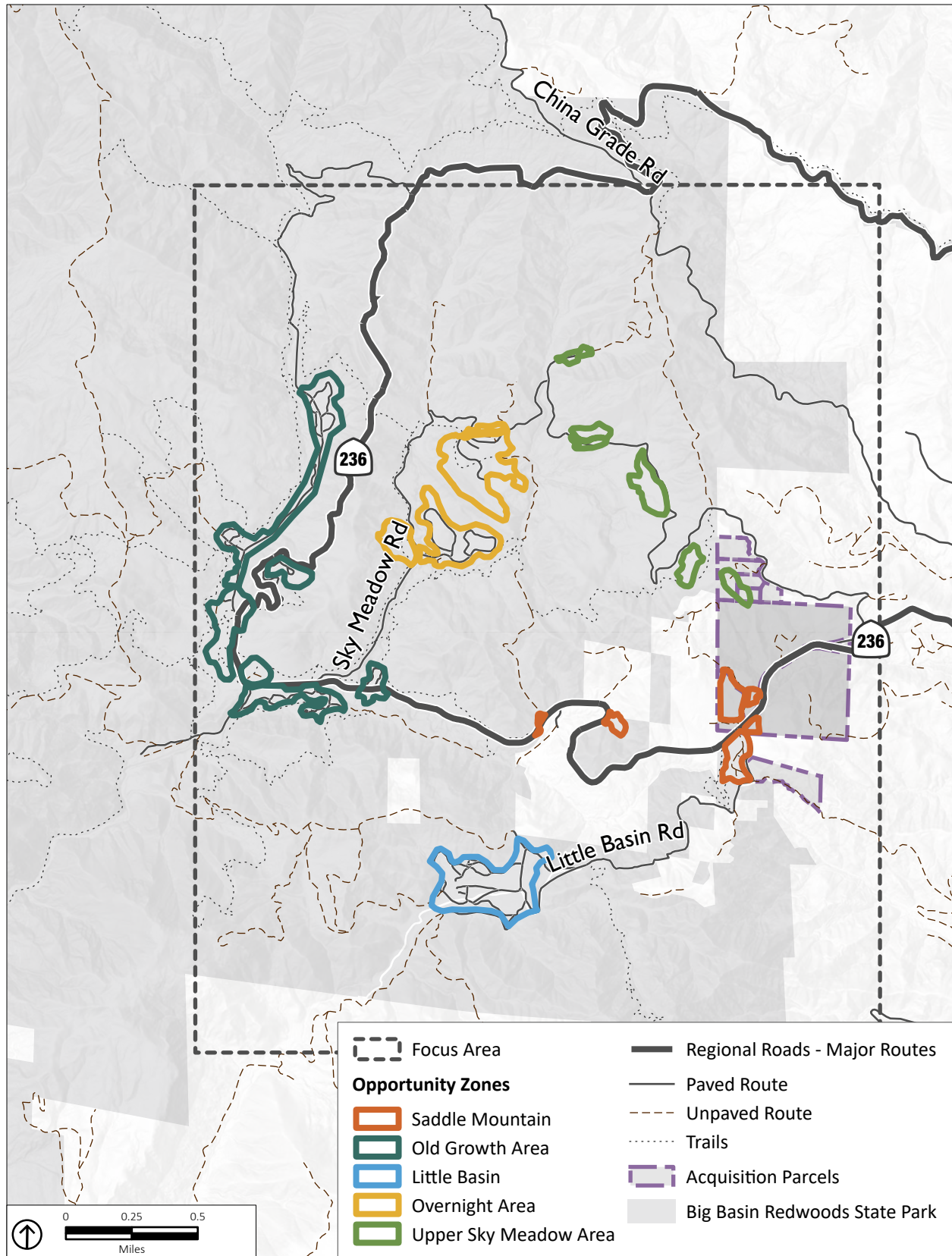
ATTACHMENTS:

- Figure 1: Regional Vicinity
- Figure 2: Focus Area
- Initial Study, Available at the following locations:
 - <https://ceganet.lci.ca.gov/Project/2001112104>
 - Santa Cruz District Headquarters
Henry Cowell Redwoods State Park
303 N Big Trees Road
Felton, CA 95018
 - Boulder Creek Library
13390 W Park Avenue
Boulder Creek, CA 95006



Source: California State Parks, 2025; PlaceWorks, 2025

Figure 1. Regional Vicinity



Source: California State Parks, 2025; PlaceWorks, 2025

Figure 2. Focus Area