

California State Park System

*Statistical
Report*

2002/03 Fiscal Year

Planning Division



PUBLICATION INFORMATION

Date of Printing: April, 2005

Number of Copies: 350

CATALOGING INFORMATION

California. Dept. of Parks and Recreation.

California State Park System Statistical Report: 2002/03 Fiscal Year.
Sacramento, Calif. : Planning Division, California Department of Parks and
Recreation

v. : map ; 28 cm.

Annual.

Current issue available via the World Wide Web.

Electronic version: (HTTP) Current issue, <http://www.parks.ca.gov>

1. California. Dept. of Parks and Recreation—Planning—Periodicals. 2. Parks—
California—Planning—Periodicals. I. Title

Suggested LC call no.: GV54.C2 A241

California State Library call no. (CALDOC): P155.S7

* * * * *

© 2005 by California State Parks. All rights reserved.

Printed in Sacramento, California, April 2005.

Initial printing of 350 copies of document and map.

California State Parks does not discriminate against people with disabilities.

To use the California Relay Service with TTY, call (888) 877-5378 or, without
TTY, call (888) 877-5379.

This publication is available in alternate formats by contacting the Planning
Division at (916) 653-9901 or visiting www.parks.ca.gov/planning.



Printed on recycled paper.

Memorandum

Date : April 18, 2005

To : Document Recipient

From : **Department of Parks and Recreation**
Planning Division

Subject : 2002/03 fiscal year edition of the *Statistical Report*

Attached you will find a copy of the 2002/03 fiscal year edition of the *California State Park System Statistical Report*. With its revisions and added materials, this document and its accompanying map succeed those of the 2001/02 fiscal year edition.

This publication provides a comprehensive collection of statistical information designed to provide interested individuals or groups with a tool to analyze various aspects and components of the State Park System. The information contained in this edition of represents a snapshot of the System on June 30, 2003. As of this 'snapshot' date, the State Park System had 252 classified units and major unclassified properties. The Statistical Report is a historical publication that represents State Park System data relating to the 2002/03 fiscal year.

The *Statistical Report* provides information relating to acreage, public use facilities, visitor attendance and revenue at the unit, sector, district and statewide levels. Information such as unit number, staffing levels and unit acreage per county is also provided to help the State Park System researcher.

New to this year's edition, you will find an expanded table of contents that we hope will shorten your search time.

The staff of the Planning Division has made every effort to ensure the accuracy of the *Statistical Report*. This publication is a collaborative effort consolidating data from multiple divisions. Even with our exhaustive efforts, it is possible that errors can occur. Any questions or suggestions concerning this edition of the *Statistical Report* can be addressed to Adrienne Tillis at (916)653-9901 or at atill@parks.ca.gov. We in the Planning Division hope that you will find the *Statistical Report* an indispensable aide for State Park System information.

(signed)

Nina Gordon
Chief, California State Parks, Planning Division

This page intentionally left blank.

TABLE OF CONTENTS

TABLE OF CONTENTS	i
INTRODUCTION.....	1
CHAPTER 1 - SUMMARY AND ANALYSIS.....	5
Number of Units and Properties	5
Acreage, DPR-Owned.....	5
Acreage, Other.....	6
Total Acreage.....	6
Waterfront Feet	6
Individual Camp Sites	6
Group Camp Sites.....	6
Non-Camping Overnight Facilities.....	6
Individual Picnic Sites	7
Group Picnic Sites.....	7
Non-Motorized Trail Miles	7
Visitor Attendance – Day Use	7
Visitor Attendance – Camping.....	7
Visitor Attendance – Total.....	7
Revenue - User Fees	8
Revenue – Concessions	8
Revenue – Miscellaneous	8
Total Revenue.....	8
Operating Costs	8
Revenue as a % of Operating Costs.....	8

Authorized Permanent Full-Time Positions	8
Authorized Temporary Positions	8
CHAPTER 2 - PARK SYSTEM SIZE AND SCOPE.....	9
CHAPTER 3 - BASIC PARK SYSTEM STATISTICS	13
CHAPTER 4 - BASIC STATISTICS – DEFINITION OF TERMS	51
Park Name	51
Park Classification.....	51
Unit Number	51
County.....	52
Acreage.....	52
Waterfront Feet	52
Public Use Facilities	52
Visitor Attendance	54
Revenue.....	55
Operating Costs	56
Staffing.....	57
CHAPTER 5 - OTHER AVAILABLE INFORMATION	59
A. Internet/Intranet	59
B. Direct Sources	59
Accidents	60
Aerial Photo Files	60
Archaeological Collections	60
Condition Assessment Database	60
Cooperating Associations	61
Crimes.....	61

Cultural Resources: Sites, Structures, Registrations.....	61
Facilities – Accessibility.....	61
Facilities – Data for Maintenance Purposes.....	61
Facilities – Museum Collections.....	62
Facilities – Three Visitor Facility Types in Detail.....	62
Flora and Fauna Databases.....	62
Incidents.....	62
Interpretive programs.....	62
Legislative Districts.....	63
The Museum System (TMS) database.....	63
Park Features, Attractions and Associations.....	63
Photographic Archives.....	63
Reservations for Campsites, Hearst Castle ®.....	63
CHAPTER 6 - HISTORY OF THIS REPORT.....	65
EXHIBIT 1 - STATISTICAL REPORTS FOR THE STATE PARK SYSTEM.....	67
A. Division of Beaches and Parks.....	67
B. Department of Parks and Recreation.....	67
APPENDIX A - SELECTED DATA – 1990/91 TO 2000/01.....	69
APPENDIX B - PUBLIC USE FACILITY SURVEY – FY 2002/03.....	71
APPENDIX C - INTERNAL UNITS, MINOR SYSTEM PROPERTIES.....	77
Table C-1.....	79
State Park System - Internal Units.....	79
Table C-2.....	83
Minor System Properties.....	83

APPENDIX D - DEPARTMENT ORGANIZATION CHART	85
APPENDIX E - OTHER SOURCES OF PARK SYSTEM DATA	89
A. California Department of Parks and Recreation	89
Archives	89
Central Records Office	89
Internal Departmental "Libraries"	89
B. Other Sources	90
California State Library (Sacramento)	90
PUBLICATION CREDITS.....	91
NOTES.....	92
MAP	Inside Pocket Back Cover

INTRODUCTION

Like any responsible organization, the California State Park System needs to clearly know the scope, scale and dimensions of its activities and operations. To have this knowledge, it needs information, as accurate as can be reasonably and economically obtained, on its assets, its activities and its products.

Collectively, this information will give a measure of the California State Park System - what its various resources are, what it does with them, and what are the useful results of its activities. Such information will allow this organization to broadly view itself and its workings at a specific point in time and, when comparing this view with those taken at other points in time, will allow one to see and to perhaps analyze the changes that have occurred.

The central purpose of this edition of the annual Statistical Report is to provide information on the basic parameters of the California State Park System for a specific period of time, the 2002/03 fiscal year. This year spanned the period between July 1, 2002 through June 30, 2003. As indicated in Chapter 3, below, some of the data used to portray the System for this fiscal year is current as of the beginning of the year, July 1. Some is current as of the last day of the fiscal year, June 30. Most of the data, however, reflects the measurement of activity that took place between these two points in time, during the course of the entire fiscal year.

It is a convention that the official number of classified units and major unclassified properties that constitute the State Park System is established on the first day of each fiscal year, July 1, and does not change during that year. The few parks and properties that may in actuality added to (or removed from) the System during the year will not be officially included in the official total until the first day of the following fiscal year.

Reflecting this convention, **the State Park System contained a total of 252 classified units and 21 major unclassified properties, for a total of 273 areas, during the 2002/03 fiscal year.**

For management purposes, these units and properties were grouped into districts, many of which further organized them into smaller groupings called sectors. The districts and sectors used in this publication reflect the organizational arrangement of the System's "field" on the last day of the fiscal year, June 30, 2003.

This statistical report will focus exclusively on information that is related to or reflects on the State Park System's "field" areas and activities, the system's 273 classified units and major unclassified properties. Specifically excluded from the data on the System's "field" activities and expenditures is the small number of the

functions that serve the field and are situated in field locations outside of headquarters, but are functions which are not associated with specific units or districts, or which are considered an extension of the headquarters' responsibilities. These functions include the three regional service centers (which provide unit-level planning and technical assistance), the three regional communication centers, and the statewide personnel training center at Pacific Grove. Also excluded are the Museum Collections Section and the Archaeological Lab and Collections.

The operation and management of the State Park System parklands and facilities requires perhaps 80% of the effort and expenditure needed to operate the department in which the System is administratively located, the California Department of Parks and Recreation. Most of the remainder of the non-"field" costs excluded from this report are those for accomplishing the wide array administrative and control functions that take place at the Sacramento headquarters. Also excluded are the costs of the Department's activities in managing those of its functions which are not at all related to the State Park System, mainly the administration the state's many park and recreation grant programs, the provision of technical assistance services to local park and recreation agencies, and any expenses related to the Office of Historic Preservation.

During the 2002/03 fiscal year, the State Park System was host to many tens of millions of visitors, cost hundreds of millions of dollars to manage and operate, employed more than two thousand permanent staff people, and generated tens of millions of dollars in fees and other revenues.

During the course of this fiscal year, the funds and staff allocated at the field level were applied to many critical objectives involving the protection and management of the System's natural and cultural resources, as well as to the provision of high-quality resource-based outdoor recreation opportunities for park visitors. At the same time, staff provided the park visitors with a variety of direct services ranging from interpretive programs to public safety.

This report provides the fiscal year's year-end numerical information on many of the System's most basic activities, revenues and expenditures, reflecting certain of the System's more measurable "inputs" and "outputs" for the collective 365-day period.

Certain of this information, such as park acreage and visitor attendance, is available at the level of the individual unit or property. Other information, such as a park's operating costs and staffing numbers, is not available at the level of an individual park or property. Such information is available only at the district level, where such resources are allocated as a single amount, so as to allow the manager to make flexible sub-allocations to various units based on needs that shift throughout the year.

In general, this statistical report contains the most basic data for the 2002/03 fiscal year, as well as some analysis of this information. It also contains reference to important specialized System data that is not widely available, but which may be directly obtained from identified staff members.

Chapter 1 highlights the salient points found in the report's data for the 2002/03 fiscal year, data which is found in detail in Chapter 3, and makes some analysis of this data's substance and significance. Where appropriate, comparisons may be made with similar data sets from earlier annual statistical reports or from other sources.

Chapter 2 briefly describes the size and organization of the State Park System as it existed at the end of the 2002/03 fiscal year, on June 30, 2003. This information is supplemented by a map of the System, which is found in the pocket located inside the back cover of this report.

Chapter 3 is the core of this report, its multi-page table providing the selected statistical information on the 273 classified units and major unclassified properties that constituted the State Park System during the 2002/03 fiscal year. The data categories and their sequence on the table are arranged so as to provide maximum comparability with the layout of previous statistical reports.

Chapter 4 provides important information about the basic data that appears in the table in Chapter 3. This includes definitions of the data categories and the terms that are used. Where important, the data collection methodology is described. This chapter also provides information on the known limitations in the scope and accuracy of this data, and indicates the source(s) within the Department where this data originates.

Chapter 5 provides information about and access to a variety of system-related data which is beyond the necessarily limited scope of this statistical report. The State Park System creates a wide variety of other data and information, often specialized in nature and not widely known or available. This chapter provides references and citations which refer the reader to a variety of more specialized data on the System's field activity, management and operations.

Chapter 6 provides information on the history of the department's annual statistical report series and on its predecessor documents. It provides specific titles of documents containing basic data reaching back many decades.

Appendix A briefly refers the reader to Appendix A of the 2001/02 Statistical Report, which provided key data for the fiscal year from 1990/2001 through 2000/01, when such reports were not prepared.

Appendix B provides information on the methodology and the results of the detailed inventory used to develop data on the System's three basic types of

public use facilities –overnight use (mainly camping), picnicking, and (non-motorized) trail mileage – used in this report. This survey also contains information on the capability of these facilities to accommodate visitors, of their “carrying capacity.”

Appendix C provides, as a matter of having a complete record of the System’s classified units, basic information for its 82 classified internal units, which are specialized units situated within the boundaries of certain other classified units. This appendix also identifies and provides limited data on a handful of small or minor properties which in 2002/03 were owned by the Department of Parks and Recreation but which were not associated with any of the State Park System’s set of 273 classified parks and major unclassified properties.

Appendix D contains an organization chart of the California Department of Parks and Recreation, included here mainly to indicate the relationship of the State Park System’s field units to the rest of the System and the to Department as a whole.

Appendix E provides references to sources of statistical data and other information about the State Park System and to collections of written materials which exist both internal to and external to the Department of Parks and Recreation. This information is very different from and does not duplicate the “Other Available Information” provided in Chapter 5 or the “Selected Data” referred to in Appendix A.

Finally, a large, folded four-color map of California located in a pocket inside the back cover of this document shows the location of the system’s 273 classified units and major unclassified properties, as well as the boundaries of the field districts, current as of June 30, 2003. It also shows the location of the 82 classified internal units that are located within the System’s basic classified units.

A new and revised edition of this statistical report will be produced following the close of each fiscal year. Readers’ suggestions for additions and improvements to this regularly issued document may be made to the State Park System Planning Section of the Department’s Planning Division.

CHAPTER 1

Summary and Analysis

This page intentionally left blank.

CHAPTER 1 - SUMMARY AND ANALYSIS

The purpose of this statistical report is to provide selected data sets which portray the fundamental measures of the California State Park System for the 2002/03 fiscal year. Collectively, this data shows the scope and scale of the System, its activities and operations, and offers implications as to the benefits derived by its users. This large amount of data has been assembled in the extensive table that is the basis of Chapter 3, below.

The purpose of the present chapter is to draw from the data found in Chapter 3 and to highlight its major findings. In many cases, data from the 2002/03 fiscal year will be compared with that from fiscal year 2001/02, revealing changes over time. The fiscal year 2001/02 data are from that year's report, as altered by the subsequent errata sheet. Where possible, some commentary will be made on the data or its trends, bringing useful perspective to the information presented.

In the present report, the ability to compare data through time will be limited due to the lack of comparable detailed statistical information from the eleven years 1990/01 through 2000/01, during which time statistical reports were not prepared (see Appendix A). In the coming years, with statistical reports again prepared annually, comparisons and analyses between fiscal years will become more meaningful and useful.

The present report's summary and analysis is limited to the systemwide totals of the various data sets. In future years, some of the analysis may be expanded to examine data at the district level, although difficulties in doing this are posed by the changes which are periodically made in district boundaries and thus in the sets of units and properties which they contain.

This statistical report's summary, with its commentary and analysis, follows. For definitions of the data categories, see Chapter 4.

* * * * *

Number of Units and Properties - The total figure of 273 units and properties indicates a substantial increase of 7 more units and properties than the previous fiscal year. This reveals a 2.63% increase in the total properties which constitute the State Park System.

Acreage, DPR-Owned - The total of 1,266,210.8 acres reflects an increase of 3.49% over the previous fiscal year. Major supplemental acquisitions in 2002/03 included

- Mendocino Headlands SP (Big River Project), 7,319 acres;
- John Marsh Home property (the Cowell Ranch in Contra Costa County), 3,647 acres;

- El Captian SB, 2,500 acres;
- Donner Memorial SP, 1,173 acres.

Acreage, Other -The total of 194,486.2 acres shows a decline of 7.20% from the previous fiscal year. Figures for both years were provided by the Department's Office of Acquisition and Real Property Services. Both figures are official: There is no explanation for the apparent reduction of acreage.

Total Acreage -The System's total acreage, a data category not reported in the table, is the total of the two previous figures. At 1,460,697 acres, this total is an increase of 1.93% from the previous fiscal year.

Waterfront Feet -The total of the three categories of waterfront footage is 6,113,179 (the equivalent of 1,157.8 miles) a loss of 3.94%. The waterfront footage related to the shoreline of lakes and reservoirs ("L") is 2,907,954 linear feet (or 550.75 miles) a loss of 8.03%. The length of frontage on the Pacific Ocean and its major bays and estuaries ("O") is 1,517,927 linear feet (the equivalent of 287.49 miles) a loss of 9.21%. The length of river footage ("R") is 1,687,298 linear feet (the equivalent of 319.56 miles) a gain of 9.40%. All waterfront feet reported only reflects actual footage that is owned or managed by the Department. Some units within the system include waterfront footage that is managed by entities outside the Department.

Individual Camp Sites - A total of 14,823 individual sites, as defined in Chapter 4 and determined by the survey described in Appendix B, below, existed in the State Park System in the 2002/03 fiscal year. These data reflect a 2.11% drop in individual camp sites from the previous fiscal year. This discrepancy is almost entirely the result of correcting the prior year's data, not actual changes in the number of sites.

Because of the way this type of camping facility (sometimes labeled as "family camp site") has been variously defined and counted over the last three decades, this figure cannot be usefully compared with any earlier information. Over the last twenty years, estimates have run as high as 17,772 sites. Two years ago, an informal consensus figure of 13,500 was developed. Accurate survey data has been compiled since the 2001/02 fiscal year.

Group Camp Sites - A total of 230 such sites, as defined in Chapter 4 and determined by the survey described in Appendix B, existed in the System in the 2002/03 fiscal year. This indicates an increase of 1.32% over the previous fiscal year. This discrepancy is almost entirely the result of correcting the prior year's data, not actual changes in the number of sites.

Non-Camping Overnight Facilities - There were 590 such facilities, as defined in Chapter 4 and determined by the survey described in Appendix B, existing in the System. There was no change in the number of non-camping overnight facilities

from the previous fiscal year. These facilities were a range of accommodations which include rooms in commercial lodging, various types of primitive shelters and the use of space in hostels.

Individual Picnic Sites - A total of 7,518 such facilities, as defined in Chapter 4 and determined by the survey described in Appendix B, existed in the System. This reflects a 4.03% increase in such facilities from those reported in the 2001/02 Statistical Report. This discrepancy is almost entirely the result of correcting the prior year's data, not actual changes in the number of sites.

Group Picnic Sites - A total of 203 facilities, as defined in Chapter 4 and determined by the survey described in Appendix B, existed in the System. These data shows a slight 2.87% decline in group picnic sites from the previous fiscal year. This discrepancy is almost entirely the result of correcting the prior year's data, not actual changes in the number of sites.

Non-Motorized Trail Miles - A total of 3,759.7 miles, as defined in Chapter 4 and determined by the survey described in Appendix B, existed in the System. This is .69% or 25.7 miles more than that reported in the 2001/02 Statistical Report. This discrepancy is almost entirely the result of correcting the prior year's data, not actual changes in the number of sites.

Visitor Attendance – Day Use - The total of 75,822,775 day use visits included both those who paid an admission fee and those who were admitted free. Roughly three-quarters of all day use visits are unpaid or free. This total figure reflected a drop of 3.56% over the previous fiscal year. While the analysis of this drop is conjecture, possible reasons include the continued fallout from the previous year's fee increase or any combination of the many variables that affect visitor attendance.

Visitor Attendance – Camping - This figure reached a record total of 6,961,289 overnight uses, an increase of .63% over the previous fiscal year. Since very few new individual or group campsites have been added to the System in the last decade, the nominal increase in camping attendance from the previous year is almost certainly a reflection of the substantial reduction in visitor use fees which was phased in during the 2001/02 fiscal year. Note that the camping attendance contains only some of the overnight use of the system that takes place in structures, as explained in Appendix B. This situation makes it impossible to make a valid correlation between the total of overnight public use facilities and overnight visitor attendance.

Visitor Attendance – Total - This figure reached 82,784,064, a decrease of 3.22% over the previous fiscal year.

It should be noted that the System's unit-level attendance figures, with few exceptions, are based on estimates rather than actual counts. In addition, the

total attendance for the System as a whole is believed to be substantially underestimated. The circumstances surrounding both of these factors are discussed as part of the definition of “visitor attendance”, found in Chapter 4, below.

Revenue - User Fees - The total of \$36,928,357 reflects an 11.78% increase over the previous fiscal year. In the 2001/02 fiscal year visitor use fees were reduced. The Statistical Report from that period describes a substantial revenue loss coupled with a considerable increase in visitor use. This is almost certainly due in large part to the reduction in visitor use fees discussed above. While the visitor use fees increased during the current reporting period, the visitor attendance did not drop by a corresponding amount. This could possibly be due to a lag in customer realization that visitor use fees had raised or an actual indication that system visitors are not turned away by the higher visitor fees.

Revenue – Concessions - The total of \$11,462,667 reflects a reduction of 1.57% over the previous year.

Revenue – Miscellaneous - The total of \$777,665 reflects a reduction of 40.72% over the previous fiscal year.

Total Revenue - The System’s total revenue of \$49,168,689, the sum of the above three categories, reflects an increase of 11.78% from the prior fiscal year. The three revenue categories listed above, based on the Department’s “earnings”, constitute an important part of the State Park and Recreation Fund (SPRF).

Operating Costs: The authorized base budget for field operations was a total of \$142,153,763, an increase of .37% over the previous fiscal year.

Revenue as a % of Operating Costs - In the 2002/03 fiscal year, the total revenue was 34.6% of the field operating costs for the System as a whole, compared to 31.1% the previous fiscal year. This figure rises to 45.5% if the OHMVR districts are not included. Among the 22 individual non-OHMVR districts, the individual district figure ranges from a low of 11% to a high of 75.1%, with a median figure of 34.85%. In this group, three districts are under 20% and four are over 50%.

Authorized Permanent Full-Time Positions - The total of 1,740.6 positions for the 2002/03 fiscal year reflected a decrease of 7.16% over the previous fiscal year. The 2001/02 reporting period noted a 7.76% increase in authorized permanent full-time positions.

Authorized Temporary Positions - In terms of person-year (PY) equivalents, a total of 774.6 positions reflected a decrease of 5.5% over the previous fiscal year.

CHAPTER 2

Park System Size and Scope

This page intentionally left blank.

CHAPTER 2 - PARK SYSTEM SIZE AND SCOPE

At the beginning of and during the entire 2002/03 fiscal year, beginning on July 1, 2002, the State Park System consisted of 273 properties. Of these, 252 were units that have been classified. The other 21 were major unclassified properties for which classification as distinct new units could be anticipated at some future date. All of these specific units and properties are identified by name on Lists 1 and 2 of the July 1, 2002 edition of the publication *Planning Milestones for the Park Units and Major Properties of the California State Park System*. The number and distribution of these properties, by classification, is as follows:

State Park	83
State Beach	64
State Historic Park	47
State Recreation Area	31
State Reserve	17
State Vehicular Recreation Area	8
State Historical Monument	1
Wayside Campground	1
State Seashore	<u>0</u>
Classified Units	252
Major Unclassified Properties	<u>21</u>
Total – State Park System	273

The California Resources Code, Sections 5019.50 *et seq*, describes and characterizes each of the nine classifications listed above. The code indicates in general terms the types of features and general qualities inherent in a unit that is given a particular classification, and also provides guidance as to the sort of management to be accorded to such a unit.

State Vehicular Recreation Areas are technically part of the State Vehicular Recreation and Trails System which, by legislation, is organizationally separate from the State Park System. For this reason, much of the data for the two systems are collected separately. The data for the two systems; however, is brought together for the purposes of this statistical report.

Located within and being an integral part of many of the System's 252 units with the classifications indicated above, there existed an additional 82 units which were identified by three other classifications. These other classifications call for enhanced, specialized protection and management for the noteworthy features or qualities found in the unit in question. Commonly termed "internal units", and

found on List 3 of the *Planning Milestones* publication cited above, the number and distribution of these units, by classification, is as follows:

Cultural Preserve	13
Natural Preserve	59
State Wilderness	<u>10</u>
Total – Internal Units	82

The 10 State Wilderness units, in addition to being part of the State Park System, are also part of a larger California Wilderness Preservation System, as defined in Public Resources Code Section 5093.3.

In addition to the lands noted above, which constitute the official State Park System, the Department of Parks and Recreation owns a number of small or minor properties that are not related to any of the System’s classified units or major unclassified properties. Information on these minor System properties appears in Table C-2, in Appendix C, below.

The System’s 273 classified units and major unclassified properties are administered through districts, groupings based largely on their geographic proximity. Larger districts are often subdivided for management purposes into smaller areas called sectors. During the 2002/03 fiscal year, the units and properties of the State Park System were administered through 27 districts (5 of them being OHMVR districts managing the units classified as SVRAs). The 22 non-OHMVR districts contained, collectively, a total of 60 sectors.

It is important to note the manner in which any change in the size or composition of the State Park System is officially determined, a matter alluded to in this report’s Introduction. Because the State Park and Recreation Commission may name and classify any property at any of its meetings, and new properties may come into system ownership at any time during the year, the size of the State Park System may change at any time over the course of a fiscal year. To transform this natural periodic fluctuation to an administratively useful once-a-year change, the Department has adopted a convention which deems the System to have a single size and composition, unchanging over the course of an entire fiscal year.

By this convention, the official size and composition of the State Park System is changed only once a year, on each July 1. To accomplish this, the changes that have been made during a year, as well as candidates for changes still needed to be made in updating the System’s official list of units and properties, are all identified in late June.

These changes can include the addition, removal or combining of specific units or properties. They can include changes of unit or property names, and changes in unit classifications. Such changes, both already accomplished or proposed, are discussed in late June of each year by the Department's Planning Policy and Programming Committee. Its recommendations for desirable changes are submitted near the end of the fiscal year to the Director for approval. Those changes which are approved by the Director in late June become official on July 1. These changes modify the existing set of State Park System units and properties and the new official set for the next fiscal year appears in that year's July 1 edition of the Department's annual *Planning Milestones* publication.

Changes in the State Park System's set of districts, their boundaries or names, are the result of administrative decisions, proposals for which are approved by the Deputy Director of Park Operations and the Director of the Department of Parks and Recreation. Such changes may be made at any point in the fiscal year. The same is true for changes made in the boundaries of the sectors within districts. The districts and sectors reported in this statistical report and shown on its accompanying map are those that were in place on June 30, 2003, at the end of the 2002/03 fiscal year.

This page intentionally left blank.

CHAPTER 3

Basic Park System Statistics

This page intentionally left blank.

CHAPTER 3 - BASIC PARK SYSTEM STATISTICS

The following set of foldout pages presents a single table which contains data providing the basic statistics which measure selected aspects of the scale, activity and operation of the California State Park System during the 2002/03 fiscal year. The categories of data found in this table, as shown in its column headings, are identical to those used in the 2001/02 Statistical Report.

In this table, the individual districts of the basic State Park System, as they existed at the end of the 2002/03 fiscal year, are presented alphabetically and, within each district, its sectors are arranged alphabetically. When classified units and major unclassified properties are managed out of a district office, that district office is - for the purpose of this report only - considered a *de facto* sector. Within each sector, the classified units and major unclassified properties are listed alphabetically. Internal classified units do not appear in this table, to avoid the double counting that would result in including their statistics along with those for the unit in which they are situated. Basic information on internal classified units appears in Appendix C.

The table has four parts that are joined sequentially. The first part provides information, on a district by district basis, for each of the 22 districts. The second provides on one sheet the totals for each of the 22 districts and the totals for all 22 districts, combined. The third provides both the detailed information and the totals for the five districts of the OHMVR Division. The last part combines the totals for all 27 districts, giving the total for the State Park System as a whole. To this total is added the information for minor system properties which, when combined, give the grand total for all of the properties of the Department of Parks and Recreation.

For each entry, the names of the classified units are followed immediately by their classifications, in abbreviated form. The names of the major unclassified projects appear as names only, without being otherwise indicated by a word like "project" or "property."

Approximately three dozen units and properties in the System are operated not by the state but instead by local government park agencies or by non-profit organizations, acting through individual operating agreements with the Department. The names of these units and properties appear in *Italics*. Their acreage data is included in System's subtotals and totals, but in many cases there is no available information on their other characteristics - their facilities, visitor attendance, operation costs, and the like.

For certain of those units and properties which are operated by the State Park System, no attendance is reported. These are usually small, isolated, little

developed and little-visited units where counting visitors or collecting entrance fees would not justify the costs of doing so.

Most of the data in the table is available and reported on the basis of the individual unit or property. However, in cases of data on such topics as operating cost and staffing, the reported data is of the allocations of these resources made by headquarters to the district. This allows the district to be flexible in allocating (and reallocating) its funds to its sectors and individual units in the course of the year. Therefore, there are no unit-level allocations shown in these categories. Also, in the case of revenues, some of these monies come not into individual units but instead into the district or sector offices; these, are recorded as district or sector income rather than unit income.

Some of the categories of information in this chapter's table, which appear as column headings, contain data which is current as of either the beginning or the end of the fiscal year. The remainder of the data categories reflects activity which occurs during the course of the fiscal year, between the first and last day.

Categories with data which are current as of the first day of the fiscal year, July 1, are those which define the State Park System for the entire year. This information corresponds exactly with that found in Lists 1 and 2 of edition of the publication *Planning Milestones for the Park Units and Major Unclassified Properties of the California State Park System* which is dated July 1 of the same year. These categories are:

- Unit name and classification, or name of the major unclassified property
- Unit number
- County or counties in which the unit or property is located

The following categories of information in the table show what is valid or in place as of the last day of the fiscal year, June 30. These categories are:

- District name
- Sector name
- Acreage - state owned
- Acreage - other
- Waterfront feet (000) – separated into lake (“L”), ocean (“O”) and river (“R”)
- Public use facilities - individual camp sites
- Public use facilities - group camp sites
- Public use facilities - non-camping overnight facilities per individual unit (e.g. rooms, cabins, yurts, etc.)
- Public use facilities - individual picnic sites
- Public use facilities - group picnic sites
- Public use facilities - non-motorized trail miles

The last categories of information indicate activity undertaken, revenue generated, or resources expended over the 365-day course of the year, from July 1 through June 30. These categories are:

- Visitor attendance - day use
- Visitor attendance - camping
- Revenue - user fees
- Revenue - concessions
- Revenue – miscellaneous
- Revenue - total
- Operating costs
- Revenue as a percent of operating costs
- Authorized staffing levels - permanent full-time
- Authorized staffing levels - temporary, in PY (person-year) equivalents

Definitions of these data categories may be found in Chapter 4, below.

Three symbols which appear in the table, defined as follows, are used so as to leave no space or cell empty.

- A zero (“0”) is put in a space where there could be number, indicating that the actual number is zero.
- A dash (“-”) is put in a space where the appropriate information does not exist or is unavailable, either because it is not collected (e.g. attendance of small or remote units) because it is not computed for record-keeping purposes (e.g. the unit allocation of a lump-sum amount of district funding).
- A (“n/a”) indicates that there is no number in this space because such a number would not be appropriate, being a meaningless computation.

UNITS AND PROPERTIES OF THE CALIFORNIA STATE PARK SYSTEM

Fiscal Year 2002/03

DISTRICT/Sector/Park	Unit No.	County	ACREAGE			Waterfront Feet (000)	Individual Camp Sites	Group Camp Sites	Non-Camping Overnight Facilities	Individual Picnic Sites	Group Picnic Sites	Non-Motor. Trail Miles
			DPR Owned	Other								
ANGELES DISTRICT												
Angeles District HQ Office												
Southern Division Office (a)												
<i>Castaic Lake SRA</i>	569	LA	0.0	4,200.2	218,943 L	60	2	0	1,000	4	3.4	
Cornfield	578	LA	32.0	0.0	0	0	0	0	0	0	0.0	
<i>Dockweiler SB</i>	541	LA	91.4	0.0	19,800 O	118	0	0	0	0	0.0	
<i>Placerita Canyon SP</i>	552	LA	341.7	0.0	0	0	3	0	6	3	5.6	
<i>Santa Monica SB</i>	557	LA	27.2	21.3	9,794 O	0	0	0	0	0	0.0	
Taylor Yard	563	LA	40.4	0.0	0	0	0	0	0	0	0.0	
<i>Watts Towers of Simon Rodia SHP</i>	518	LA	0.1	0.0	0	0	0	0	0	0	0.0	
<i>Will Rogers SB (b)</i>	562	LA	82.1	0.0	17 O	0	0	0	0	0	0.0	
Malibu Sector												
Leo Carrillo SP	540	LA VEN	2,377.0 116.4	0.0 2.5	13,108 O	136	1	0	13	0	8.0	
Malibu Creek SP	537	LA	7,851.2	63.9	0	62	1	0	15	0	36.6	
<i>Malibu Lagoon SB</i>	548	LA	157.7	1.2	2,404 O	0	0	0	3	0	1.0	
<i>Point Dume SB (c)</i>	533	VEN	31.9	0.0	2,927 O	0	0	0	0	0	0.3	
Point Mugu SP	535	VEN	13,925.2	21.5	19,224 O	139	2	0	28	0	62.2	
Robert H. Meyer Memorial SB	590	LA	37.0	0.0	2,342 O	0	0	0	6	0	3.0	
Mojave Sector												
Antelope Valley CA Poppy Preserve SR	560	LA	1,776.4	0.0	0	0	0	0	6	0	7.4	
Antelope Valley Indian Museum SHP	579	LA	147.3	0.0	0	0	0	0	10	0	1.0	
Arthur B. Ripley Desert Woodland SP	595	LA	566.1	0.0	0	0	0	0	1	0	1.0	
Providence Mountains SRA	538	SBD	5,890.5	0.0	0	6	0	0	2	0	1.8	
Red Rock Canyon SP	577	KER	19,147.4	6,177.3	0	50	0	0	6	0	1.7	
Saddleback Butte SP	543	LA	2,874.9	78.9	0	50	1	0	35	0	8.5	
Tomo-Kahni SHP	368	KER	240.0	0.0	0	0	0	0	0	0	1.5	
Topanga Sector												
<i>Kenneth Hahn SRA</i>	516	LA	367.7	0.0	0	0	0	0	14	0	9.0	
Los Encinos SHP	546	LA	4.7	0.0	0	0	0	0	3	1	0.0	
Pío Pico SHP	551	LA	1.1	2.3	0	0	0	0	2	0	0.5	
Santa Susana Pass SHP	505	LA	670.7	0.0	0	0	0	0	0	0	0.0	
Topanga SP	572	LA	12,330.9	10.8	0	8	0	0	10	1	36.4	
Verdugo Mountains	597	LA	251.4	0.0	0	0	0	0	0	0	1.0	
Will Rogers SHP	559	LA	189.1	0.0	0	0	0	0	10	1	5.0	
ANGELES DISTRICT TOTALS			69,569.6	10,579.7	218,943 L 69,616 O	629	10	0	1,170	10	194.9	

- (a) This is the only one of the Department's three Division Offices that is not located in the Department's Sacramento
- (b) The unit number was changed from 558 on 7-1-03.
- (c) The unit number was changed from 553 on 7-1-03.

UNITS AND PROPERTIES OF THE CALIFORNIA STATE PARK SYSTEM

Fiscal Year 2002/03

VISITOR ATTENDANCE			REVENUE				Authorized Base Budget	Authorized Staffing Levels		
Day Use	Camping	Total	User Fees	Concessions	Misc.	Total	Operating Costs (\$)	Revenue as % of Oper. Cost	Perm Full Time	Temp PY Equiv.
ANGELES DISTRICT										
			\$5,808	\$0	\$0	\$5,808	\$9,694,665		108.8	39.4
			\$0	\$0	\$0	\$0				
			\$0	\$0	\$0	\$0				
			\$0	\$0	\$0	\$0				
			\$0	\$0	\$0	\$0				
			\$0	\$0	\$0	\$0				
			\$0	\$0	\$0	\$0				
			\$0	\$0	\$0	\$0				
			\$0	\$0	\$0	\$0				
			\$5,051	\$0	\$771	\$5,822				
407,533	184,313	591,846	\$511,935	\$30,289	\$57	\$542,281				
451,648	73,176	524,824	\$303,577	\$1,254	\$544	\$305,375				
903,781	0	903,781	\$90,252	\$0	\$35	\$90,287				
347,826	0	347,826	\$0	\$0	\$0	\$0				
255,434	166,351	421,785	\$396,631	\$1,768	\$183	\$398,581				
576,056	0	576,056	\$611	\$0	\$0	\$611				
104,138	0	104,138	\$69,266	\$500	\$0	\$69,766				
6,916	0	6,916	\$4,595	\$817	\$70	\$5,481				
1,229	0	1,229	\$0	\$0	\$0	\$0				
7,666	769	8,435	\$35,999	\$0	\$36	\$36,034				
169,962	15,638	185,600	\$51,078	\$0	\$10	\$51,088				
4,841	3,549	8,390	\$6,732	\$0	\$0	\$6,732				
338	0	338	\$519	\$0	\$0	\$519				
			\$0	-\$129	\$1	-\$128				
			\$0	\$0	\$0	\$0				
3,490	0	3,490	\$2,134	\$0	\$0	\$2,134				
0	0	0	\$0	-\$349	\$18	-\$332				
16,720	0	16,720	\$0	\$0	\$0	\$0				
386,776	389	387,165	\$46,655	\$401,150	\$0	\$447,806				
0	0	0	\$0	\$0	\$0	\$0				
279,649	0	279,649	\$195,949	\$0	\$0	\$195,949				
3,924,003	444,185	4,368,188	\$1,726,791	\$435,300	\$1,724	\$2,163,815	\$9,694,665	22.3%	108.8	39.4

UNITS AND PROPERTIES OF THE CALIFORNIA STATE PARK SYSTEM

Fiscal Year 2002/03

DISTRICT/Sector/Park	Unit No.	County	ACREAGE		Waterfront Feet (000)	Individual Camp Sites	Group Camp Sites	Non-Camping Overnight Facilities	Individual Picnic Sites	Group Picnic Sites	Non-Motor. Trail Miles
			DPR Owned	Other							
BAY AREA DISTRICT											
Bay Area District HQ Office											
Año Nuevo SP	222	SM	2,896.0	0.0	0	0	0	0	0	0	0.0
Año Nuevo SR	228	SM	1,313.0	5.9	41,200 O	0	0	0	4	0	1.8
Bean Hollow SB	266	SM	44.0	0.0	9,806 O	0	0	0	4	0	1.2
Burleigh H. Murray Ranch	285	SM	1,325.5	0.0	0	0	0	0	0	0	1.6
Butano SP	423	SM	4,116.5	0.4	0	45	0	0	10	0	26.1
Candlestick Point SRA	214	SF	204.9	0.0	3,930 O	0	0	0	23	3	1.8
Gray Whale Cove SB	270	SM	3.1	0.0	390 O	0	0	0	0	0	0.0
Half Moon Bay SB	277	SM	180.7	0.2	13,158 O	55	1	0	17	0	4.7
Lake Del Valle SRA	764	ALA	287.3	3,344.6	103,000 L	168	6	0	200	13	26.9
Montara SB	278	SM	773.5	6.8	12,485 O	0	0	0	0	0	8.3
Pacifica SB	230	SM	20.7	0.0	1,930 O	0	0	0	0	0	0.0
Pescadero SB	227	SM	664.9	34.9	9,800 O	0	0	0	0	0	0.0
Pigeon Point Light Station SHP	281	SM	0.0	12.0	450 O	0	0	3	0	0	0.1
Point Montara Light Station	282	SM	0.0	6.0	0	0	0	3	0	0	0.0
Pomponio SB	226	SM	420.6	0.0	11,750 O	0	0	0	10	0	0.0
Robert W. Crown Memorial SB	258	ALA	132.2	0.0	7,760 O	0	0	0	35	7	5.1
San Bruno Mountain SP	205	SM	297.6	0.0	0	0	0	0	8	0	6.4
San Gregorio SB	273	SM	171.6	0.0	4,900 O	0	0	0	10	0	0.0
Thornton SB	275	SM	58.0	0.0	3,160 O	0	0	0	0	0	0.0
Diablo Sector											
Eastshore State Park SS (a)	220	ALA CC	373.3 13.9	55.0 0.0	8,100 O	0	0	0	0	0	10.2
John Marsh Home	254	CC	3,659.9	3.7	824 R	0	0	0	0	0	0.0
Mount Diablo SP	203	CC	19,676.0	0.0	0	64	5	0	15	3	133.0
BAY AREA DISTRICT TOTALS			36,633.2	3,469.5	103,000 L 128,819 O 824 R	332	12	6	336	26	227.2

(a) In 12/03, portions of this unit were identified and separately classified by the Park and Recreation Commission as Albany State Marine Reserve (SMR) and Emeryville Crescent SMR. These two units are not included in this statistical report for two reasons. These two units were not officially added to the State Park System until July 1, 2003. Second, the process applicable to the classification of a State Marine Reserve is not complete until an identical classification action is taken by the Fish & Game Commission. Until that time, the acreage and waterfront footage in these two units will continue to be counted as part of the State Seashore.

UNITS AND PROPERTIES OF THE CALIFORNIA STATE PARK SYSTEM

Fiscal Year 2002/03

VISITOR ATTENDANCE			REVENUE				Authorized Base Budget	Authorized Staffing Levels		
Day Use	Camping	Total	User Fees	Concessions	Misc.	Total	Operating Costs (\$)	Revenue as % of Oper. Cost	Perm Full Time	Temp PY Equiv.
BAY AREA DISTRICT										
			\$1,713	-\$394	\$200	\$1,519	\$4,345,643		61.0	20.1
0	0	0	\$0	\$0	\$0	\$0				
163,748	0	163,748	\$197,821	\$0	\$145	\$197,966				
250,319	0	250,319	\$0	\$0	\$0	\$0				
20,897	0	20,897	\$0	\$0	\$0	\$0				
69,049	16,336	85,385	\$72,698	\$275	\$93	\$73,066				
60,086	0	60,086	\$20,975	\$576,851	\$0	\$597,826				
36,077	0	36,077	\$0	\$0	\$0	\$0				
966,166	66,351	1,032,517	\$361,007	\$10,200	\$561	\$371,768				
-	-	-	\$0	\$0	\$0	\$0				
85,257	0	85,257	\$0	\$0	\$0	\$0				
-	-	-	\$0	\$0	\$0	\$0				
367,675	0	367,675	-\$22	\$0	\$0	-\$22				
51,073	1,637	52,710	\$0	\$0	\$0	\$0				
7,463	8,088	15,551	\$0	\$0	\$0	\$0				
185,941	0	185,941	\$7,626	\$0	\$0	\$7,626				
-	-	-	\$0	\$0	\$0	\$0				
-	-	-	\$0	\$0	\$0	\$0				
334,813	0	334,813	\$72,554	\$0	\$196	\$72,751				
0	0	0								
0	0	0	\$0	\$0	\$0	\$0				
0	0	0	\$0	\$0	\$0	\$0				
405,471	10,463	415,934	\$287,455	\$329,654	\$44,763	\$661,872				
3,004,035	102,875	3,106,910	\$1,021,828	\$916,586	\$45,958	\$1,984,371	\$4,345,643	45.7%	61.0	20.1

UNITS AND PROPERTIES OF THE CALIFORNIA STATE PARK SYSTEM

Fiscal Year 2002/03

DISTRICT/Sector/Park	Unit No.	County	ACREAGE		Waterfront Feet (000)	Individual Camp Sites	Group Camp Sites	Non-Camping Overnight Facilities	Individual Picnic Sites	Group Picnic Sites	Non-Motor. Trail Miles
			DPR Owned	Other							
CALAVERAS DISTRICT											
Calaveras District HQ Office											
Calaveras Big Trees SP	306	CAL TUO	2,819.4	0.0	26,400 R	136	2	0	30	1	50.0
Columbia SHP	307	TUO	2,678.7	0.0	0	0	0	2	25	0	0.5
Indian Grinding Rock SHP	373	AMA	251.6	20.6	0	24	0	6	1	1	1.5
CALAVERAS DISTRICT TOTALS			5,885.1	20.6	26,400 R	160	2	8	56	2	52.0
CAPITAL DISTRICT											
Capital District HQ Office											
Capital Sector											
California State Capitol Museum (a)	357	SAC	0.0	0.0	0	0	0	0	0	0	0.0
Historic Sites Sector											
Governor's Mansion SHP	377	SAC	0.8	0.0	0	0	0	0	0	0	0.0
Leland Stanford Mansion SHP (b)	328	SAC	1.4	0.0	0	0	0	0	0	0	0.0
State Indian Museum (SHP) (c)	309	SAC	0.3	0.0	0	0	0	0	0	0	0.0
Sutter's Fort SHP (c)	308	SAC	5.5	0.0	0	0	0	0	0	0	0.0
Woodland Opera House SHP	327	YOL	0.3	0.0	0	0	0	0	0	0	0.0
Railroad Sector											
Old Sacramento SHP	372	SAC	293.3	0.2	1,065 R	0	0	0	0	0	0.0
Railtown 1897 SHP	335	TUO	20.0	0.0	0	0	0	0	0	0	0.0
CAPITAL DISTRICT TOTALS			321.5	0.2	1,065 R	0	0	0	0	0	0.0

(a) This unit is deemed as having no acreage; the subject square footage of the State Capitol building is leased from the Legislative Joint Committee on Rules.

(b) The Heilbron Mansion property with its 0.48 acres has been assigned for management purposes to this nearby unit.

(c) The State Indian Museum acreage is an estimated 0.3 acres of Sutter's Fort State Historic Park's 5.8 acres.

UNITS AND PROPERTIES OF THE CALIFORNIA STATE PARK SYSTEM

Fiscal Year 2002/03

VISITOR ATTENDANCE			REVENUE				Authorized Base Budget	Authorized Staffing Levels		
Day Use	Camping	Total	User Fees	Concessions	Misc.	Total	Operating Costs (\$)	Revenue as % of Oper. Cost	Perm Full Time	Temp PY Equiv.
CALAVERAS DISTRICT										
			\$4	\$19,086	\$10	\$19,099	\$1,774,267		29.0	3.4
120,080	44,740	164,820	\$225,997	\$510	\$979	\$227,486				
628,616	0	628,616	\$373	\$272,180	\$459	\$273,012				
28,000	8,203	36,203	\$31,580	\$0	\$0	\$31,580				
776,696	52,943	829,639	\$257,954	\$291,775	\$1,448	\$551,177	\$1,774,267	31.1%	29.0	3.4
CAPITAL DISTRICT										
							\$6,071,458		86.6	30.2
546,232	0	546,232	\$0	\$0	\$0	\$0				
			\$82,705	\$0	\$6	\$82,711				
38,416	0	38,416	\$0	\$0	\$0	\$0				
0	0	0	\$0	\$0	\$0	\$0				
43,221	0	43,221	\$7,109	\$0	\$0	\$7,109				
194,475	0	194,475	\$0	\$0	\$0	\$0				
			\$0	\$0	\$0	\$0				
			\$526,435	\$52,037	\$77	\$578,549				
567,596	0	567,596	\$0	\$0	\$0	\$0				
71,657	0	71,657	\$0	\$0	\$0	\$0				
1,461,597	0	1,461,597	\$616,249	\$52,037	\$83	\$668,369	\$6,071,458	11.0%	86.6	30.2

UNITS AND PROPERTIES OF THE CALIFORNIA STATE PARK SYSTEM

Fiscal Year 2002/03

DISTRICT/Sector/Park	Unit No.	County	ACREAGE		Waterfront Feet (000)	Individual Camp Sites	Group Camp Sites	Non-Camping Overnight Facilities	Individual Picnic Sites	Group Picnic Sites	Non-Motor. Trail Miles
			DPR Owned	Other							
CHANNEL COAST DISTRICT											
Channel Coast District HQ Office											
<i>El Presidio de Santa Barbara SHP</i>											
	575	SB	4.5	0.0	0	0	0	0	0	0	0.0
	676	VEN	92.1	0.0	2,920	0	0	0	0	0	0.0
Carpinteria Sector											
	514	SB VEN	60.1 2.2	0.0 0.0	4,685	262	2	0	20	2	0.0
Gaviota Sector											
<i>Chumash Painted Cave SHP</i>											
	525	SB	7.5	0.0	0	0	0	0	0	0	0.1
	519	SB	2,634.0	0.0	9,750	128	4	0	19	0	3.8
	542	SB	2,738.0	4.2	32,020	44	0	0	0	0	11.6
	527	SB	155.1	750.0	33,055	76	1	0	52	0	1.8
La Purisima Sector											
<i>La Purisima Mission SHP</i>											
	513	SB	1,934.3	0.0	0	0	0	0	10	0	29.6
	535	SB	84.0	0.0	8,800	0	0	0	0	0	0.0
Ventura Sector											
	530	VEN	109.2	2.7	16,200 1,550	90	5	0	8	0	3.1
	515	VEN	312.4	2.1	13,445	170	1	0	0	0	1.3
	567	VEN	109.1	1.0	8,920	0	0	0	165	0	1.1
CHANNEL COAST DISTRICT TOTALS			8,242.5	759.9	129,795 1,550	770	13	0	274	2	52.3

UNITS AND PROPERTIES OF THE CALIFORNIA STATE PARK SYSTEM

Fiscal Year 2002/03

VISITOR ATTENDANCE			REVENUE				Authorized Base Budget	Authorized Staffing Levels		
Day Use	Camping	Total	User Fees	Concessions	Misc.	Total	Operating Costs (\$)	Revenue as % of Oper. Cost	Perm Full Time	Temp PY Equiv.
CHANNEL COAST DISTRICT										
			\$71	\$2,591	\$113	\$2,776	\$5,545,585		73.0	42.8
-	-	-	\$0	\$0	\$0	\$0				
0	0	0	\$0	\$0	\$0	\$0				
590,321	455,815	1,046,136	\$1,099,401	\$0	\$625	\$1,100,026				
0	0	0	\$0	\$0	\$0	\$0				
88,673	106,204	194,877	\$480,969	\$14,881	\$283	\$496,134				
60,988	22,054	83,042	\$113,429	\$14,719	\$0	\$128,148				
99,936	78,101	178,037	\$330,570	\$16,191	\$297	\$347,057				
			\$3,317	\$0	\$0	\$3,317				
172,358	0	172,358	\$44,187	\$0	\$0	\$44,187				
0	0	0	\$0	\$0	\$0	\$0				
50,754	58,341	109,095	\$158,539	\$0	\$0	\$158,539				
35,017	160,368	195,385	\$345,338	\$0	\$17	\$345,355				
608,812	0	608,812	\$102,933	\$2,529	\$126	\$105,588				
1,706,859	880,883	2,587,742	\$2,678,753	\$50,912	\$1,462	\$2,731,127	\$5,545,585	49.2%	73.0	42.8

UNITS AND PROPERTIES OF THE CALIFORNIA STATE PARK SYSTEM

Fiscal Year 2002/03

DISTRICT/Sector/Park	Unit No.	County	ACREAGE		Waterfront Feet (000)	Individual Camp Sites	Group Camp Sites	Non-Camping Overnight Facilities	Individual Picnic Sites	Group Picnic Sites	Non-Motor. Trail Miles
			DPR Owned	Other							
COLORADO DESERT DISTRICT (a)											
Colorado Desert District HQ Office											
Anza-Borrego Sector											
Anza-Borrego Desert SP	622	IMP	14,350.5	0.0							
		RIV	36,328.7	0.0	0	183	5	0	10	4	696.0
		SD	522,569.9	0.0							
Montane Sector											
Cuyamaca Rancho SP	618	SD	24,614.7	0.0	0	190	3	7	127	0	180.0
Palomar Mountain SP	617	SD	1,908.5	0.0	0	32	3	0	36	0	12.8
Salton Sea Sector											
<i>Indio Hills Palms</i>	646	RIV	2,206.0	0.0	0	0	0	0	0	0	2.0
Picacho SRA	658	IMP	510.6	6,248.0	7,160 L 44,005 R	69	9	0	8	0	15.5
Salton Sea SRA	623	IMP	435.7	7,322.0	82,120 L	1,659	0	0	50	2	1.0
		RIV	2,868.4	6,274.9							
COLORADO DESERT DISTRICT TOTALS			605,793.0	19,844.9	89,280 L 44,005 R	2,133	20	7	231	6	907.3
FOUR RIVERS DISTRICT											
Four Rivers District HQ Office											
Coe Sector											
Henry W. Coe SP	432	SCL	60,610.0	53.0	0	102	18	0	0	0	293.6
		STA	27,194.4	100.5							
North Sector											
Bethany Reservoir SRA	744	ALA	0.0	608.5	29,400 L	0	0	0	8	0	2.0
Caswell Memorial SP	316	SJ	258.1	0.0	24,375 R	63	1	0	24	1	4.5
George J. Hatfield SRA	312	MER	46.5	0.0	7,300 R	10	1	0	10	0	1.2
Great Valley Grasslands SP	352	MER	2,826.0	0.0	16,900 R	0	0	0	0	0	4.0
McConnell SRA	310	MER	74.3	0.0	6,065 R	21	2	0	20	0	0.1
Turlock Lake SRA	311	STA	0.0	3,556.8	12,000 L	64	0	0	50	0	1.0
South Sector											
Pacheco SP	369	MER	6,253.5	0.0	0	9	2	0	9	0	54.0
		SCL	640.4	0.0							
San Luis Reservoir SRA	333	MER	0.0	26,035.7	480,510 R	192	2	0	150	4	5.0
FOUR RIVERS DISTRICT TOTALS			97,903.1	30,354.5	41,400 L 535,150 R	461	26	0	271	5	365

(a) The district's San Jacinto Sector was transferred to the Inland Empire District on 7-1-02.

UNITS AND PROPERTIES OF THE CALIFORNIA STATE PARK SYSTEM

Fiscal Year 2002/03

VISITOR ATTENDANCE			REVENUE				Authorized Base Budget	Authorized Staffing Levels		
Day Use	Camping	Total	User Fees	Concessions	Misc.	Total	Operating Costs (\$)	Revenue as % of Oper. Cost	Perm Full Time	Temp PY Equiv.
COLORADO DESERT DISTRICT										
			\$579	\$710	\$630	\$1,919	\$4,834,116		64.0	22.2
406,347	143,918	550,265	\$282,236	\$3,444	\$236,352	\$522,032				
			-\$44	\$0	\$0	-\$44				
457,376	126,569	583,945	\$366,134	\$1,319	\$72	\$367,524				
68,389	73,158	141,547	\$84,017	\$1,053	\$29	\$85,098				
			\$0	\$0	\$1	\$1				
2,194	0	2,194	\$0	\$0	\$0	\$0				
48,080	24,033	72,113	\$40,036	\$351	\$25	\$40,411				
221,685	23,972	245,657	\$108,620	\$3,583	\$0	\$112,203				
1,204,071	391,650	1,595,721	\$881,576	\$10,460	\$237,109	\$1,129,144	\$4,834,116	23.4%	64.0	22.2
FOUR RIVERS DISTRICT										
			-\$70	\$0	\$67	-\$3	\$3,368,601		47.7	15.2
48,162	13,869	62,031	\$44,066	\$2,921	\$3	\$46,990				
			-\$100	\$0	\$0	-\$100				
27,011	0	27,011	\$58,353	\$89	\$376	\$58,818				
27,693	21,800	49,493	\$33,307	\$0	\$270	\$33,577				
20,145	3,980	24,125	\$9,731	\$0	\$39	\$9,770				
27,447	0	27,447	\$0	\$0	\$0	\$0				
53,237	14,749	67,986	\$56,196	\$0	\$0	\$56,196				
57,447	17,424	74,871	\$97,903	\$0	\$19	\$97,923				
2,659	44	2,703	\$0	\$0	\$0	\$0				
703,342	53,988	757,330	\$391,514	\$6,069	\$321	\$397,903				
967,143	125,854	1,092,997	\$690,900	\$9,079	\$1,095	\$701,074	\$3,368,601	20.8%	47.7	15.2

UNITS AND PROPERTIES OF THE CALIFORNIA STATE PARK SYSTEM

Fiscal Year 2002/03

DISTRICT/Sector/Park	Unit No.	County	ACREAGE		Waterfront Feet (000)	Individual Camp Sites	Group Camp Sites	Non-Camping Overnight Facilities	Individual Picnic Sites	Group Picnic Sites	Non-Motor. Trail Miles
			DPR Owned	Other							
GOLD FIELDS DISTRICT											
Gold Fields District HQ Office											
Auburn SRA Sector											
Auburn SRA	398	ED PLA	0.0 0.0	12,000.0 30,000.0	388,000 R	42	0	0	0	0	101.9
Delta Sector											
Brannan Island SRA	314	SAC	328.6	0.0	16,020 R	156	6	1	25	5	15.5
Delta Meadows	338	SAC	470.5	1.1	3,200 R	0	0	0	0	0	2.0
Franks Tract SRA	329	CC	3,522.8	0.2	8,000 R	0	0	0	0	0	0.0
Stone Lake	355	SAC	1,089.6	0.0	21,300 L	0	0	0	0	0	0.0
Folsom Sector											
Folsom Lake SRA	318	ED PLA SAC	1,199.8 293.5 737.6	9,132.0 5,219.9 2,966.9	686,400 L	169	3	0	300	3	180.0
Folsom Powerhouse SHP	370	SAC	18.7	16.3	0	0	0	0	4	0	0.0
Gold Mines Sector											
Empire Mine SHP	383	NEV	853.0	0.0	0	0	0	0	27	0	11.5
Malakoff Diggins SHP	356	NEV	3,142.9	0.0	2,640 L	30	1	3	3	1	12.5
South Yuba River SP	359	NEV	2,585.5	5,186.2	2,100 L 141,460 R	0	0	0	2	0	12.9
Marshall Gold Sector											
Marshall Gold Discovery SHP	304	ED	286.6	0.0	5,870 R	0	0	0	158	3	3.3
GOLD FIELDS DISTRICT			14,529.0	52,522.6	712,440 L	397	10	4	519	12	340
TOTALS					174,550 R						
INLAND EMPIRE DISTRICT											
Inland Empire District HQ Office											
Lake Perris SRA	665	RIV	1,440.4	5,240.0	52,800 L	434	16	0	1,600	3	42.0
Chino Sector											
California Citrus SHP	570	RIV	247.5	0.0	0	0	0	0	8	1	2.5
San Timoteo Canyon	506	RIV	711.0	0.0	0	0	0	0	0	0	0.0
Chino Hills SP	508	ORA RIV SBD	5,269.7 296.5 7,023.5	0.0	0	10	1	0	5	1	60.5
San Jacinto Sector (a)											
Mount San Jacinto SP	616	RIV	13,718.0	0.0	0	85	0	0	8	0	35.5
Silverwood Sector											
Silverwood Lake SRA	592	SBD	2,201.0	0.0	68,640 L	236	8	0	603	0	21.7
INLAND EMPIRE DISTRICT TOTA			30,907.5	5,240.0	121,440 L	765	25	0	2,224	5	162.2

(a) The San Jacinto Sector was transferred to the Inland Empire District from the Colorado Desert District on 7-1-02.

UNITS AND PROPERTIES OF THE CALIFORNIA STATE PARK SYSTEM

Fiscal Year 2002/03

VISITOR ATTENDANCE			REVENUE				Authorized Base Budget	Authorized Staffing Levels		
Day Use	Camping	Total	User Fees	Concessions	Misc.	Total	Operating Costs (\$)	Revenue as % of Oper. Cost	Perm Full Time	Temp PY Equiv.
GOLD FIELDS DISTRICT										
			\$70,269	\$191,910	\$3,308	\$265,487	\$6,483,234		98.0	32.0
1,087,675	6,667	1,094,342	\$117,109	\$1,687	\$1,264	\$120,060				
			\$3,003							
97,796	51,988	149,784	\$258,649	\$1,432	\$20	\$260,101				
7,412	2,308	9,720	\$0	\$0	\$0	\$0				
16,308	0	16,308	\$0	\$0	\$0	\$0				
-	-	-	\$0	\$0	\$0	\$0				
1,267,115	42,023	1,309,138	\$1,339,538	\$0	\$665	\$1,340,203				
0	0	0	\$0	\$0	\$0	\$0				
			\$6,357	\$0	\$21	\$6,378				
117,558	0	117,558	\$57,592	\$45	\$28	\$57,665				
10,230	9,131	19,361	\$20,173	\$0	\$111	\$20,284				
547,569	1,431	549,000	\$75	\$0	\$0	\$75				
			\$99,974	\$20,035	\$40	\$120,050				
280,122	0	280,122	\$3,960	\$0	\$0	\$3,960				
2,344,110	106,881	2,450,991	\$1,976,700	\$215,110	\$5,456	\$2,197,267	\$6,483,234	33.9%	98.0	32.0
INLAND EMPIRE DISTRICT										
			\$0	-\$27	\$276	\$248	\$7,797,516		113.0	45.2
961,142	244,524	1,205,666	\$1,355,519	\$289,329	\$2,093	\$1,646,941				
			\$2,423	\$0	\$0	\$2,423				
191,154	0	191,154	\$6,360	\$0	\$73	\$6,433				
0	0	0	\$0	\$0	\$0	\$0				
127,709	3,870	131,579	\$13,180	\$0	\$0	\$13,180				
			\$667	\$23,219	\$0	\$23,885				
358,315	29,503	387,818	\$50,048	\$218	\$1	\$50,268				
			\$371,023	\$32,814	\$0	\$403,837				
378,781	108,228	487,009	\$176,627	\$0	\$669	\$177,296				
2,017,101	386,125	2,403,226	\$1,975,846	\$345,553	\$3,112	\$2,324,511	\$7,797,516	29.8%	113.0	45.2

UNITS AND PROPERTIES OF THE CALIFORNIA STATE PARK SYSTEM

Fiscal Year 2002/03

DISTRICT/Sector/Park	Unit No.	County	ACREAGE			Waterfront Feet (000)	Individual Camp Sites	Group Camp Sites	Non-Camping Overnight Facilities	Individual Picnic Sites	Group Picnic Sites	Non-Motor. Trail Miles
			DPR Owned	Other								
MARIN DISTRICT												
Marin District HQ Office												
China Camp SP	202	MRN	1,514.3	0.0	8,500 O	31	0	0	58	1	20.2	
<i>Marconi Conference Center SHP</i>	213	MRN	62.4	0.0	2,900 O	0	0	40	0	0	2.0	
Mount Tamalpais SP	239	MRN	6,212.0	0.0	11,800 O	23	3	10	3	4	50.5	
Olompali SHP	201	MRN	700.0	0.0	0	0	0	0	17	0	4.5	
Samuel P. Taylor SP	233	MRN	2,615.0	92.2	0	61	3	0	45	2	31.8	
Tomales Bay SP	237	MRN	2,382.6	8.2	17,900 O	0	0	0	47	1	7.8	
Angel Island Sector												
Angel Island SP	231	MRN SF	728.9 9.0	17.8 0.0	23,000 O	30	0	0	45	4	16.0	
MARIN DISTRICT TOTALS			14,224.1	118.3	64,100 O	145	6	50	215	12	132.8	
MENDOCINO DISTRICT												
Mendocino District HQ Office												
Caspar Headlands SB	161	MEN	3.0	0.0	400 O	0	0	0	0	0	1.5	
Caspar Headlands SR	160	MEN	2.7	0.0	2,400 O	0	0	0	0	0	0.1	
Greenwood SB	165	MEN	47.2	0.0	1,500 O	0	0	0	4	0	0.8	
Hendy Woods SP	148	MEN	816.3	0.0	17,508 R	92	0	4	6	0	7.0	
Jug Handle SR	154	MEN	751.2	16.0	11,900 O	0	0	0	5	0	4.5	
MacKerricher SP	146	MEN	1,908.0	574.2	6,000 L 40,830 O 2,950 R	137	2	0	3	0	6.7	
Mailliard Redwoods SR	149	MEN	242.0	0.0	0	0	0	0	1	0	0.0	
Manchester SP	147	MEN	1,490.0	3,782.0	20,620 O	50	1	0	3	0	3.0	
<i>Mendocino Headlands SP (a)</i>	158	MEN	7,694.5	0.0	20,600 O	0	0	0	0	0	6.0	
<i>Mendocino Woodlands SP</i>	159	MEN	720.0	0.0	0	0	0	100	0	0	9.0	
Montgomery Woods SR	143	MEN	1,323.8	0.0	1,300 R	0	0	0	3	0	1.0	
Navarro River Redwoods SP	144	MEN	726.5	0.0	1,650 O 100,300 R	35	0	0	8	0	0.0	
Point Cabrillo Light Station	166	MEN	292.4	0.0	11,970 O	0	0	0	0	0	0.0	
Russian Gulch SP	141	MEN	1,257.7	47.0	11,950 O	31	5	0	1	0	11.4	
Schooner Gulch SB	164	MEN	53.6	0.0	800 O	0	0	0	0	0	0.5	
Van Damme SP	142	MEN	2,317.2	20.0	9,550 O 51,400 R	84	1	0	1	0	7.8	
Westport-Union Landing SB	150	MEN	57.0	0.0	17,750 O	44	0	0	3	0	0.5	
MENDOCINO DISTRICT TOTALS			19,703.0	4,439.2	6,000 L 151,920 O 173,458 R	473	9	104	38	0	59.8	

(a) The 7,334.9 acre Big River property was administratively added to this unit for management purposes.

UNITS AND PROPERTIES OF THE CALIFORNIA STATE PARK SYSTEM

Fiscal Year 2002/03

VISITOR ATTENDANCE			REVENUE				Authorized Base Budget	Authorized Staffing Levels		
Day Use	Camping	Total	User Fees	Concessions	Misc.	Total	Operating Costs (\$)	Revenue as % of Oper. Cost	Perm Full Time	Temp PY Equiv.
MARIN DISTRICT										
			\$1,526	\$1,606	\$0	\$3,132	\$3,640,336		50.0	16.2
460,504	21,644	482,148	\$74,793	\$1,640	\$219	\$76,653				
-	-	-	\$0	\$0	\$0	\$0				
589,334	30,136	619,470	\$161,641	\$3,126	\$2,742	\$167,509				
68,945	0	68,945	\$2,223	\$0	\$0	\$2,223				
96,059	61,888	157,947	\$208,406	\$0	\$158	\$208,564				
117,175	81	117,256	\$17,216	\$0	\$0	\$17,216				
184,647	24,207	208,854	\$143,999	\$190,109	\$17	\$334,126				
1,516,664	137,956	1,654,620	\$609,803	\$196,481	\$3,137	\$809,421	\$3,640,336	22.2%	50.0	16.2
MENDOCINO DISTRICT										
			\$3,661	\$36,154	\$518	\$40,333	\$2,502,540		36.0	12.7
11,061	0	11,061	\$0	\$0	\$0	\$0				
5,687	0	5,687	\$0	\$0	\$0	\$0				
63,496	0	63,496	\$0	\$0	\$0	\$0				
10,346	24,280	34,626	\$104,983	\$0	\$88	\$105,070				
114,430	0	114,430	\$0	\$0	\$0	\$0				
1,099,493	102,327	1,201,820	\$272,044	\$1,413	\$115	\$273,572				
1,344	0	1,344	\$0	\$0	\$0	\$0				
97,151	15,006	112,157	\$36,849	\$0	\$0	\$36,849				
-	-	-	\$0	\$0	\$0	\$0				
-	-	-	\$0	\$0	\$0	\$0				
36,660	0	36,660	\$0	\$0	\$0	\$0				
173,176	18,792	191,968	\$25,267	\$2,016	\$0	\$27,283				
88,212	0	88,212	\$0	\$0	\$0	\$0				
175,681	21,818	197,499	\$83,122	\$77	\$154	\$83,353				
49,637	0	49,637	\$0	\$0	\$0	\$0				
322,177	52,357	374,534	\$171,632	\$0	\$257	\$171,889				
42,507	26,649	69,156	\$53,126	\$0	\$8	\$53,134				
2,291,058	261,229	2,552,287	\$750,684	\$39,660	\$1,140	\$791,483	\$2,502,540	31.6%	36.0	12.7

UNITS AND PROPERTIES OF THE CALIFORNIA STATE PARK SYSTEM

Fiscal Year 2002/03

DISTRICT/Sector/Park	Unit No.	County	ACREAGE			Waterfront Feet (000)	Individual Camp Sites	Group Camp Sites	Non-Camping Overnight Facilities	Individual Picnic Sites	Group Picnic Sites	Non-Motor. Trail Miles
			DPR Owned	Other								
MONTEREY DISTRICT												
Monterey District HQ Office												
Asilomar Sector												
Asilomar SB&Conference Grounds	436	MON	107.0	0.0	7,850	O	0	0	313	0	1	1.8
Big Sur Sector												
Andrew Molera SP	491	MON	4,766.1	0.0	15,510	O 18,000 R	24	0	0	5	0	17.5
John Little SR	438	MON	20.7	0.0	2,100	O	0	0	0	0	0	0.0
Julia Pfeiffer Burns SP	462	MON	2,142.2	1,620.0	11,900	O	2	0	0	6	0	12.7
Limekiln SP	461	MON	711.2	0.0	4,900	O	33	0	0	0	0	3.8
Pfeiffer Big Sur SP	448	MON	1,062.9	44.2	32,500	R	215	2	61	36	3	10.9
Point Sur SHP	419	MON	72.1	8.1	6,200	O	0	0	0	0	0	0.1
Gavilan Sector												
Fremont Peak SP	412	MON SBT	54.0 105.1	2.7 0.0	0		24	1	0	4	1	8.5
San Juan Bautista SHP	411	SBT	6.1	0.0	0		0	0	0	1	0	0.0
Monterey Sector												
Carmel River SB	437	MON	296.7	0.0	7,960	O 5,600 R	0	0	0	0	0	1.0
Castro Adobe	434	MON	1.0	0.0	0		0	0	0	0	0	0.0
Fort Ord Dunes SP (a)	476	MON	0.0	0.0	0		0	0	0	0	0	0.0
Garrapata SP	467	MON	2,938.8	0.8	27,710	O	0	0	0	0	0	10.0
Hatton Canyon	435	MON	130.0	0.0	0		0	0	0	0	0	0.0
Marina SB	479	MON	170.7	0.0	5,900	O	0	0	0	0	0	0.8
Monterey SB	460	MON	90.2	10.0	21,181	O	0	0	0	0	0	0.8
Monterey SHP	455	MON	8.3	1.4	0		0	0	0	0	0	0.0
Moss Landing SB	454	MON	60.4	0.0	4,730	O	0	0	0	0	0	0.0
Point Lobos SR	449	MON	1,324.7	0.0	23,777	O	0	0	0	22	0	9.0
Point Lobos Ranch	440	MON	510.4	818.3	0		0	0	0	0	0	0.0
Salinas River SB	451	MON SCR	259.2 22.6	0.0 0.0	15,624	O	0	0	0	0	0	1.6
Zmudowski SB	450	MON SCR	155.5 0.0	20.7 18.0	10,650	O	0	0	0	0	0	1.5
MONTEREY DISTRICT TOTALS			15,015.7	2,544.2	165,992	O 56,100 R	298	3	374	74	5	79.8

(a) This official unit currently has no acreage; it is anticipated that 886.0 acres will be ultimately transferred from the U.S. Army.

UNITS AND PROPERTIES OF THE CALIFORNIA STATE PARK SYSTEM

Fiscal Year 2002/03

VISITOR ATTENDANCE			REVENUE				Authorized Base Budget	Authorized Staffing Levels		
Day Use	Camping	Total	User Fees	Concessions	Misc.	Total	Operating Costs (\$)	Revenue as % of Oper. Cost	Perm Full Time	Temp PY Equiv.
MONTEREY DISTRICT										
			\$698	\$19,508	\$10	\$20,216	\$6,144,501		81.0	22.7
375,938	140,790	516,728	\$0	\$1,392,212	\$0	\$1,392,212				
				-\$231		-\$231				
56,860	18,264	75,124	\$63,936	\$32,848	\$88	\$96,872				
0	0	0	\$0	\$0	\$0	\$0				
142,773	1,950	144,723	\$5,950	\$0	\$86	\$6,036				
-	-	-	\$86,915	\$0	\$0	\$86,915				
155,738	223,824	379,562	\$646,356	\$508,348	\$38	\$1,154,741				
5,072	84	5,156	\$2,225	\$0	\$0	\$2,225				
			\$74	\$0	\$0	\$74				
8,845	4,593	13,438	\$10,220	\$0	\$20	\$10,240				
115,003	0	115,003	\$23,064	\$440	\$132	\$23,637				
198,768	0	198,768	\$5,873	\$0	\$0	\$5,873				
-	-	-	\$0	\$0	\$0	\$0				
0	0	0	\$0	\$0	\$0	\$0				
194,334	0	194,334	\$0	\$0	\$0	\$0				
-	-	-	\$0	\$0	\$0	\$0				
870,696	0	870,696	\$0	\$0	\$0	\$0				
932,228	0	932,228	\$0	\$0	\$0	\$0				
563,739	0	563,739	\$0	\$13,246	\$0	\$13,246				
388,472	0	388,472	\$0	\$0	\$0	\$0				
285,032	0	285,032	\$0	\$0	\$0	\$0				
0	0	0	\$332,988	\$0	\$47	\$333,035				
505,221	0	505,221	\$0	\$0	\$0	\$0				
75,060	0	75,060	\$0	\$0	\$0	\$0				
4,873,779	389,505	5,263,284	\$1,178,298	\$1,966,371	\$421	\$3,145,089	\$6,144,501	51.2%	81.0	22.7

UNITS AND PROPERTIES OF THE CALIFORNIA STATE PARK SYSTEM

Fiscal Year 2002/03

DISTRICT/Sector/Park	Unit No.	County	ACREAGE			Waterfront Feet (000)	Individual Camp Sites	Group Camp Sites	Non-Camping Overnight Facilities	Individual Picnic Sites	Group Picnic Sites	Non-Motor. Trail Miles
			DPR Owned	Other								
NORTH COAST REDWOODS DISTRICT												
North Coast Redwoods District HQ Office												
Eel River Sector												
Admiral William Standley SRA	118	MEN	45.2	0.0	3,200 R	0	0	0	0	0	0.0	
Benbow Lake SRA	123	HUM	975.5	0.0	17,500 L 18,050 R	78	0	0	10	3	6.5	
Grizzly Creek Redwoods SP	110	HUM	393.5	0.0	17,700 R	35	1	0	24	1	4.5	
Humboldt Redwoods SP	119	HUM	51,216.5	0.0	294,994 R	267	4	0	7	2	95.7	
John B. Dewitt Redwoods SR	137	HUM	581.8	0.0	14,225 R	0	0	0	0	0	0.0	
Reynolds WC	131	MEN	65.8	0.0	5,720 R	0	0	0	0	0	0.0	
Richardson Grove SP	116	HUM	1,720.2	0.0	15,300 R	171	1	0	15	1	11.1	
Sinkyone Wilderness SP	133	HUM	140.0	0.0	36,744 O	51	2	1	4	0	23.9	
		MEN	7,456.3	131.0	15,100 R							
Smithe Redwoods SR	130	MEN	689.0	0.0	6,640 R	0	0	0	0	0	0.0	
Standish-Hickey SRA	117	MEN	1,020.8	0.0	28,650 R	163	0	0	5	0	8.7	
Redwood Coast Sector												
Del Norte Coast Redwoods SP	103	DN	6,369.0	0.0	38,280 O	149	0	0	0	0	17.4	
Jedediah Smith Redwoods SP	102	DN	9,891.4	0.0	46,890 R	111	1	0	1	0	21.2	
Mill Creek	111	DN	24,772.0	0.0	0	0	0	0	0	0	0.0	
Pelican SB	101	DN	5.2	0.0	975 O	0	0	0	0	0	0.0	
Prairie Creek Redwoods SP	104	DN HUM	228.4 13,832.7	0.0 126.3	32,640 O	117	0	0	10	0	61.0	
Tolowa Dunes SP	134	DN	4,398.8	0.0	600 L 13,700 O	6	1	0	0	0	10.5	
Trinidad Sector												
Azalea SR	109	HUM	30.4	0.0	0	0	0	0	0	0	0.9	
Fort Humboldt SHP	120	HUM	18.0	0.0	0	0	0	0	16	0	0.2	
Harry A. Merlo SRA	136	HUM	955.0	0.0	18,700 L	0	0	0	0	0	0.4	
Humboldt Lagoons SP	105	HUM	1,936.1	0.0	49,196 L 36,700 O	12	0	0	4	0	2.9	
Little River SB	108	HUM	111.6	0.0	3,960 O 4,320 R	0	0	0	0	0	0.0	
Patrick's Point SP	106	HUM	652.2	0.0	21,850 O	129	1	0	27	3	8.1	
Trinidad SB	107	HUM	158.7	0.0	8,360 O	0	0	0	10	0	1.4	
NORTH COAST REDWOODS DISTRICT TOTALS			127,664.0	257.3	85,996 L 193,209 O 470,789 R	1,289	11	1	133	10	274.4	

UNITS AND PROPERTIES OF THE CALIFORNIA STATE PARK SYSTEM

Fiscal Year 2002/03

VISITOR ATTENDANCE			REVENUE				Authorized Base Budget	Authorized Staffing Levels		
Day Use	Camping	Total	User Fees	Concessions	Misc.	Total	Operating Costs (\$)	Revenue as % of Oper. Cost	Perm Full Time	Temp PY Equiv.
NORTH COAST REDWOODS DISTRICT										
			\$1,027	\$583	\$30	\$1,640	\$4,897,572		75.0	24.9
8,096	0	8,096	\$0	\$0	\$0	\$0				
16,001	11,817	27,818	\$57,410	\$0	\$43	\$57,453				
21,335	10,004	31,339	\$37,924	\$216	\$10	\$38,150				
447,443	60,064	507,507	\$274,577	\$5,116	\$0	\$279,692				
12,619	0	12,619	\$0	\$0	\$0	\$0				
0	0	0	\$0	\$0	\$0	\$0				
31,068	33,814	64,882	\$140,314	\$3,490	\$894	\$144,698				
10,927	17,577	28,504	\$32,405	\$0	\$35	\$32,440				
18,360	0	18,360	\$0	\$0	\$0	\$0				
12,249	30,475	42,724	\$95,126	\$829	\$179	\$96,134				
45,646	32,575	78,221	\$113,763	\$1,178	\$18	\$114,959				
141,701	45,955	187,656	\$203,011	\$6,094	\$8	\$209,113				
-	-	-	\$0	\$0	\$0	\$0				
14,617	0	14,617	\$0	\$0	\$0	\$0				
187,711	76,097	263,808	\$234,841	\$518	\$0	\$235,359				
28,853	227	29,080	\$0	\$0	\$0	\$0				
7,322	0	7,322	\$0	\$0	\$0	\$0				
22,300	0	22,300	\$0	\$0	\$0	\$0				
62,920	0	62,920	\$0	\$0	\$0	\$0				
142,911	458	143,369	\$2,979	\$1,784	\$150	\$4,913				
26,060	0	26,060	\$0	\$0	\$0	\$0				
115,306	72,697	188,003	\$270,457	\$0	\$274	\$270,731				
53,700	0	53,700	\$0	\$0	\$0	\$0				
1,427,145	391,760	1,818,905	\$1,463,833	\$19,809	\$1,640	\$1,485,282	\$4,897,572	30.3%	75.0	24.9

UNITS AND PROPERTIES OF THE CALIFORNIA STATE PARK SYSTEM

Fiscal Year 2002/03

DISTRICT/Sector/Park	Unit No.	County	ACREAGE			Waterfront Feet (000)	Individual Camp Sites	Group Camp Sites	Non-Camping Overnight Facilities	Individual Picnic Sites	Group Picnic Sites	Non-Motor. Trail Miles
			DPR Owned	Other								
NORTHERN BUTTES DISTRICT (a)												
Northern Buttes District HQ Office												
Bidwell Mansion SHP	139	BUT	5.2	0.0	0	0	0	0	0	0	0.0	
Bidwell-Sacramento River SP	163	BUT GLE	238.5 4.9	0.0 0.0	11,560	R	6	0	0	21	0 1.9	
Colusa-Sacramento River SRA	140	COL	66.5	0.0	4,400	R	14	1	0	10	0 1.8	
Lake Oroville SRA	151	BUT	902.5	28,544.4	934,560 34,400	L R	1,401	24	0	280	4 64.6	
William B. Ide Adobe SHP	128	TEH	3.9	0.0	1,753	R	0	0	0	8	2 0.0	
Woodson Bridge SRA	122	TEH	323.5	0.0	18,500	R	43	1	0	2	0 1.0	
Cascade Sector												
Ahjumawi Lava Springs SP	190	SHA	5,930.0	485.2	18,300 17,000	L R	9	0	0	1	0 12.9	
Castle Crags SP	124	SHA	3,904.7	0.0	16,250	R	82	0	0	10	0 29.3	
McArthur-Burney Falls Memorial SP	125	SHA	611.1	299.0	9,000 16,700	L R	136	0	0	45	0 8.3	
Shasta SHP	126	SHA	23.0	0.0	0		0	0	0	1	1 3.0	
Weaverville Joss House SHP	127	TRI	2.8	0.0	0		0	0	0	0	0 0.0	
NORTHERN BUTTES DISTRICT TOTALS			12,016.6	29,328.6	961,860 120,563	L R	1,691	26	0	378	7 122.7	
ORANGE COAST DISTRICT												
Orange Coast District HQ Office												
Corona del Mar SB	532	ORA	29.6	0.0	2,700	O	0	0	0	4	1 0.0	
Crystal Cove SP	594	ORA	2,791.1	1,150.0	16,800	O	32	0	0	0	1 48.0	
Doheny SB	610	ORA	62.3	192.0	6,567	O	120	0	0	134	17 1.3	
San Clemente SB	611	ORA	117.5	0.1	5,970	O	161	1	0	15	2 1.3	
San Onofre SB	662	SD	0.0	2,109.7	24,288	O	333	1	0	4	0 7.0	
North Sector												
Bolsa Chica SB	534	ORA	169.2	0.3	27,844	O	115	0	0	2	0 2.7	
Huntington SB	564	ORA	121.1	0.0	10,880	O	0	0	0	6	0 2.2	
ORANGE COAST DISTRICT TOTALS			3,290.7	3,452.0	95,049	O	761	2	0	165	21 62.5	

(a) Clay Pit SVRA is operated by the Northern Buttes District under agreement with the OHVMR Division.

UNITS AND PROPERTIES OF THE CALIFORNIA STATE PARK SYSTEM

Fiscal Year 2002/03

VISITOR ATTENDANCE			REVENUE				Authorized Base Budget	Authorized Staffing Levels		
Day Use	Camping	Total	User Fees	Concessions	Misc.	Total	Operating Costs (\$)	Revenue as % of Oper. Cost	Perm Full Time	Temp PY Equiv.
NORTHERN BUTTES DISTRICT										
			\$27,655	\$303,799	\$251	\$331,705	\$5,319,260		67.0	28.7
47,963	0	47,963	\$19,849	\$0	\$0	\$19,849				
118,675	78	118,753	\$15,127	\$0	\$89	\$15,216				
194,761	7,477	202,238	\$48,847	\$0	\$0	\$48,847				
1,340,362	40,700	1,381,062	\$439,576	\$0	\$116	\$439,692				
21,125	225	21,350	\$1,760	\$0	\$19	\$1,779				
70,815	9,642	80,457	\$41,283	\$0	\$503	\$41,787				
			\$0	\$0	\$15	\$15				
4,431	1,270	5,701	\$586	\$0	\$0	\$586				
32,536	11,950	44,486	\$86,196	\$0	\$30	\$86,226				
137,689	66,658	204,347	\$255,607	\$0	\$40	\$255,647				
27,972	0	27,972	\$9,171	\$91,644	\$25	\$100,840				
10,981	0	10,981	\$4,584	\$0	\$73	\$4,657				
2,007,310	138,000	2,145,310	\$950,240	\$395,443	\$1,161	\$1,346,844	\$5,319,260	25.3%	67.0	28.7
ORANGE COAST DISTRICT										
			\$83,184	\$0	\$573	\$83,757	\$9,875,306		115.0	107.4
-	-	-	\$0	\$0	\$0	\$0				
653,724	203	653,927	\$465,253	\$1,039,637	\$370	\$1,505,260				
1,695,697	139,211	1,834,908	\$957,757	\$55,735	\$1,456	\$1,014,948				
900,517	160,716	1,061,233	\$688,111	\$387	\$5,715	\$694,214				
2,201,215	183,799	2,385,014	\$1,516,937	\$0	\$3,614	\$1,520,552				
2,247,331	10,626	2,257,957	\$1,293,726	\$7,141	\$5,667	\$1,306,533				
3,769,946	0	3,769,946	\$1,265,209	\$29,728	\$796	\$1,295,734				
11,468,430	494,555	11,962,985	\$6,270,179	\$1,132,627	\$18,191	\$7,420,998	\$9,875,306	75.1%	115.0	107.4

UNITS AND PROPERTIES OF THE CALIFORNIA STATE PARK SYSTEM

Fiscal Year 2002/03

DISTRICT/Sector/Park	Unit No.	County	ACREAGE			Waterfront Feet (000)	Individual Camp Sites	Group Camp Sites	Non-Camping Overnight Facilities	Individual Picnic Sites	Group Picnic Sites	Non-Motor. Trail Miles
			DPR Owned	Other								
RUSSIAN RIVER DISTRICT												
Russian River District HQ Office												
Bodega Sector (Sector II)												
Fort Ross SHP	207	SON	3,303.1	90.0	23,480	O	20	0	0	26	0	0.5
Kruse Rhododendron SR	206	SON	317.0	0.0	0		0	0	0	0	0	2.0
Salt Point SP	248	SON	4,744.9	940.0	42,362	O	119	1	0	22	0	13.0
Seaview Sector (Sector I)												
Sonoma Coast SB	209	SON	4,760.4	667.0	100,792	O 26,631 R	160	0	0	65	0	20.2
Sweetwater Sector (Sector III)												
Armstrong Redwoods SR	208	SON	752.0	0.0	0		0	0	0	78	1	5.6
Austin Creek SRA	245	SON	5,927.5	0.0	0		27	0	0	4	0	23.9
RUSSIAN RIVER DISTRICT TOTA			19,804.9	1,697.0	166,634	O 26,631 R	326	1	0	195	1	65.2

UNITS AND PROPERTIES OF THE CALIFORNIA STATE PARK SYSTEM

Fiscal Year 2002/03

VISITOR ATTENDANCE			REVENUE				Authorized Base Budget	Authorized Staffing Levels		
Day Use	Camping	Total	User Fees	Concessions	Misc.	Total	Operating Costs (\$)	Revenue as % of Oper. Cost	Perm Full Time	Temp PY Equiv.
RUSSIAN RIVER DISTRICT										
			\$3,447	\$2,717	\$3,109	\$9,272	\$3,342,189		42.0	18.4
146,512	5,050	151,562	\$62,547	\$0	\$201	\$62,748				
42,586	0	42,586	\$0	\$0	\$0	\$0				
237,926	53,260	291,186	\$130,992	\$0	\$361	\$131,353				
2,811,892	97,950	2,909,842	\$342,330	\$0	\$163	\$342,493				
1,032,982	0	1,032,982	\$77,092	\$0	\$71	\$77,163				
145,556	8,736	154,292	\$0	\$0	\$48	\$48				
4,417,454	164,996	4,582,450	\$616,408	\$2,717	\$3,952	\$623,077	\$3,342,189	18.6%	42.0	18.4

UNITS AND PROPERTIES OF THE CALIFORNIA STATE PARK SYSTEM

Fiscal Year 2002/03

DISTRICT/Sector/Park	Unit No.	County	ACREAGE			Waterfront Feet (000)	Individual Camp Sites	Group Camp Sites	Non-Camping Overnight Facilities	Individual Picnic Sites	Group Picnic Sites	Non-Motor. Trail Miles
			DPR Owned	Other								
SAN DIEGO COAST DISTRICT												
San Diego Coast District HQ Office												
Border Field SP (a)	669	SD	814.6	495.7	6,040	O	0	2	0	34	34	9.9
Cardiff SB	621	SD	26.9	480.3	6,300	O	0	0	0	6	0	0.0
Carlsbad SB	612	SD	18.4	10.0	7,119	O	0	0	0	4	0	0.0
Leucadia SB (b)	634	SD	10.6	0.0	5,380	O	0	0	0	0	0	0.0
Moonlight SB	638	SD	12.7	0.0	1,555	O	0	0	0	12	0	0.0
San Elijo SB	654	SD	42.6	545.0	7,100	O	171	0	0	16	0	0.1
Silver Strand SB	614	SD	3,708.7	40.0	23,600	O	0	0	0	110	0	0.0
South Carlsbad SB	652	SD	118.4	0.0	17,875	O	222	0	0	5	0	0.0
Torrey Pines SB	631	SD	61.4	0.0	8,841	O	0	0	0	2	0	0.0
Torrey Pines SR	631	SD	1,446.2	15.2	0		0	0	0	0	0	14.0
Historic Parks Sector												
Old Town San Diego SHP	667	SD	29.0	0.1	0		0	0	0	0	0	0.0
San Pasqual Battlefield SHP	615	SD	1.9	47.7	0		0	0	0	2	0	0.5
SAN DIEGO COAST DISTRICT TOTALS			6,291.3	1,634.0	83,810	O	393	2	0	191	34	24.5
SAN JOAQUIN DISTRICT												
San Joaquin Coast District HQ Office												
Millerton Lake Sector												
Millerton Lake SRA	378	FRE MAD	302.5 1.5	5,777.0 776.4	233,040	L	211	6	0	175	2	0.0
North Sector												
CA State Mining & Mineral Museum (c)	707	SJ	0.0	0.0	0		0	0	0	0	0	0.0
Wassama Round House SHP	376	MAD	26.6	0.0	0		0	0	0	6	1	0.0
South Sector												
Colonel Allensworth SHP	341	TUL	941.8	0.0	0		16	0	0	20	0	0.0
Fort Tejon SHP	351	KER	205.4	0.0	0		0	1	0	12	0	0.0
Tule Elk SR	350	KER	983.6	0.0	0		0	0	0	8	0	2.0
SAN JOAQUIN DISTRICT TOTALS			2,461.4	6,553.5	233,040	L	227	7	0	221	3	2.0

(a) Includes 9,455 visitors at Tijuana Estuary Natural Preserve.

(b) The unit number was changed from 653 on 7-1-03.

(c) The approximately 11,138 square feet of building housing the museum is provided to the Department by Mariposa County.

UNITS AND PROPERTIES OF THE CALIFORNIA STATE PARK SYSTEM

Fiscal Year 2002/03

VISITOR ATTENDANCE			REVENUE				Authorized Base Budget	Authorized Staffing Levels		
Day Use	Camping	Total	User Fees	Concessions	Misc.	Total	Operating Costs (\$)	Revenue as % of Oper. Cost	Perm Full Time	Temp PY Equiv.
SAN DIEGO COAST DISTRICT										
			\$1,911	\$0	\$112,215	\$114,126	\$6,876,242		86.0	62.9
18,413	0	18,413	\$100	\$0	\$0	\$100				
1,315,308	0	1,315,308	\$27,763	\$0	\$126	\$27,889				
1,593,639	0	1,593,639	\$0	\$0	\$0	\$0				
-	-	-	\$0	\$0	\$0	\$0				
-	-	-	\$0	\$0	\$0	\$0				
558,211	242,885	801,096	\$748,844	\$74,592	\$341	\$823,777				
378,324	85,737	464,061	\$423,982	\$5,542	\$865	\$430,390				
1,208,914	268,101	1,477,015	\$760,521	\$65,412	\$344	\$826,277				
1,453,935	0	1,453,935	\$1,485	\$0	\$0	\$1,485				
336,191	0	336,191	\$406,064	\$0	\$280	\$406,344				
			\$0	\$1,019	\$0	\$1,019				
6,490,800	0	6,490,800	\$2,290	\$2,514,046	\$882	\$2,517,218				
7,618	0	7,618	\$0	\$0	\$0	\$0				
13,361,353	596,723	13,958,076	\$2,372,960	\$2,660,611	\$115,054	\$5,148,625	\$6,876,242	74.9%	86.0	62.9
SAN JOAQUIN DISTRICT										
			\$0	\$41	\$0	\$41	\$3,006,268		41.0	6.5
504,971	58,223	563,194	\$589,616	\$36,803	\$959	\$627,378				
15,417	0	15,417	\$10,217	\$0	\$0	\$10,217				
0	0	0	\$0	\$0	\$0	\$0				
			\$0	\$2,306	\$0	\$2,306				
19,700	3,424	23,124	\$7,458	\$0	\$297	\$7,755				
46,876	904	47,780	\$13,840	\$0	\$365	\$14,205				
5,100	58	5,158	\$338	\$0	\$89	\$427				
592,064	62,609	654,673	\$621,469	\$39,150	\$1,710	\$662,328	\$3,006,268	22.0%	41.0	6.5

UNITS AND PROPERTIES OF THE CALIFORNIA STATE PARK SYSTEM

Fiscal Year 2002/03

DISTRICT/Sector/Park	Unit No.	County	ACREAGE		Waterfront Feet (000)	Individual Camp Sites	Group Camp Sites	Non-Camping Overnight Facilities	Individual Picnic Sites	Group Picnic Sites	Non-Motor. Trail Miles
			DPR Owned	Other							
SAN LUIS OBISPO COAST DISTRICT (a)											
San Luis Obispo District HQ Office											
Cayucos SB	452	SLO	15.6	0.0	1,980 O	0	0	0	0	0	0.0
Estero Bay	749	SLO	353.3	0.0	23,000 O	0	0	0	0	0	3.8
Los Osos Oaks SR (b)	746	SLO	85.1	0.0	0	0	0	0	0	0	0.4
Montaña De Oro SP	441	SLO	8,295.6	1.0	57,900 O	49	5	0	2	1	42.8
Morro Bay SP	443	SLO	2,137.6	592.5	13,715 O	124	2	0	0	4	25.9
Morro Strand SB	442	SLO	160.2	0.0	19,460 O	76	0	0	1	10	0.0
Pismo SB	446	SLO	1,342.7	0.0	1,200 L 32,420 O	185	0	0	8	1	2.3
San Simeon Sector											
Hearst San Simeon											
SHM	494	SLO	161.1	45.5	0	0	0	0	2	0	0.0
San Simeon SP	487	SLO	543.6	0.0	12,400 O	205	0	0	20	0	3.4
William Randolph											
Hearst Mem SB	486	SLO	8.1	0.0	733 O	0	0	0	25	0	0.0
SAN LUIS OBISPO COAST DISTRICT TOTALS			13,102.9	639.0	1,200 L 161,608 O	639	7	0	58	16	78.5
SANTA CRUZ DISTRICT											
Santa Cruz District HQ Office											
Henry Cowell Redwoods											
SP	418	SCR	4,315.9	0.0	44,553 R	112	0	0	45	2	59.6
Lighthouse Field SB	474	SCR	37.6	0.0	0	0	0	0	0	0	3.0
Manresa SB	416	SCR	137.9	0.0	11,800 O	64	0	0	7	0	1.5
Natural Bridges SB	407	SCR	58.9	0.0	1,800 O	0	0	0	52	0	1.2
New Brighton SB	408	SCR	157.3	0.1	3,900 O	116	0	0	14	1	0.7
Santa Cruz Mission SHP											
433	SCR	1.9	0.0	0	0	0	0	0	2	0	0.0
Seacliff SB	409	SCR	86.5	0.0	9,483 O	26	0	0	131	1	1.1
Sunset SB	410	SCR	299.8	2.3	18,600 O	94	1	0	22	2	2.0
The Forest of Nisene											
Marks SP	465	SCR	10,222.2	0.0	0	6	0	0	17	0	44.1
Twin Lakes SB											
422	SCR	93.7	1.6	10,620 L 4,285 O	0	0	0	0	0	0	1.0
Wilder Ranch SP	456	SCR	7,844.5	0.0	18,800 O	0	6	0	5	0	34.2
Mountain Sector											
Big Basin Redwoods SP											
406	SCR SM	17,128.8 904.1	0.0 0.0	6,100 O	186	10	36	105	0	0	130.3
Castle Rock SP											
404	SCR SM	4,031.4 24.8	13.0 0.0	2,500 R	26	0	0	0	0	0	45.0
Portola Redwoods SP											
405	SM	2,527.8	0.0	0	66	4	0	26	1	0	21.0
SANTA CRUZ DISTRICT TOTALS			47,977.2	17.0	10,620 L 74,768 O 47,053 R	696	21	36	426	7	344.7

(a) The former San Simeon District and its three units were incorporated into this district on 11-1-02.

(b) The unit number was changed from 739 on 7-1-03.

UNITS AND PROPERTIES OF THE CALIFORNIA STATE PARK SYSTEM

Fiscal Year 2002/03

VISITOR ATTENDANCE			REVENUE				Authorized Base Budget	Authorized Staffing Levels		
Day Use	Camping	Total	User Fees	Concessions	Misc.	Total	Operating Costs (\$)	Revenue as % of Oper. Cost	Perm Full Time	Temp PY Equiv.
SAN LUIS OBISPO COAST DISTRICT										
			\$3,763	\$0	\$100,028	\$103,791	\$2,647,045		35.0	11.6
-	-	-	\$0	\$0	\$0	\$0				
0	0	0	\$0	\$0	\$0	\$0				
12,908	0	12,908	\$0	\$0	\$0	\$0				
728,075	39,277	767,352	\$191,145	\$0	\$97	\$191,243				
739,753	108,856	848,609	\$380,617	\$211,261	\$708	\$592,586				
			\$142,073	\$0	\$151	\$142,224				
			\$630,941	\$154,709	\$321	\$785,970				
			\$216	\$0	\$198,404	\$198,620	\$10,786,737		110.0	97.4
767,816	0	767,816	\$5,339,008	\$1,174,621	\$1,415	\$6,515,044				
673,327	123,951	797,278	\$370,880	\$0	\$2,309	\$373,189				
386,817	0	386,817	\$0	\$964	\$0	\$964				
3,308,696	272,084	3,580,780	\$7,058,644	\$1,541,555	\$303,433	\$8,903,631	\$13,433,782	66.3%	145.0	109.0
SANTA CRUZ DISTRICT										
			\$23,309	\$333,861	\$457	\$357,626	\$7,598,949		102.0	44.8
281,715	63,580	345,295	\$233,104	\$0	\$46	\$233,149				
-	-	-	\$0	\$0	\$0	\$0				
231,477	54,844	286,321	\$109,293	\$0	\$110	\$109,403				
893,383	0	893,383	\$31,861	\$0	\$78	\$31,939				
1,289,863	124,518	1,414,381	\$177,311	\$0	\$0	\$177,311				
11,387	0	11,387	\$0	\$0	\$0	\$0				
2,271,402	63,657	2,335,059	\$239,826	\$0	\$161	\$239,987				
214,963	99,692	314,655	\$198,989	\$0	\$121	\$199,110				
138,516	238	138,754	\$9,198	\$0	\$28	\$9,226				
969,442	0	969,442	\$0	\$40,500	\$0	\$40,500				
431,542	0	431,542	\$15,311	\$0	\$24	\$15,335				
			\$0	\$561	\$0	\$561				
1,423,276	131,378	1,554,654	\$324,344	\$1,100	\$844	\$326,288				
94,544	3,002	97,546	\$25,069	\$0	\$81	\$25,150				
24,929	20,078	45,007	\$88,079	\$660	\$263	\$89,002				
8,276,439	560,987	8,837,426	\$1,475,694	\$376,682	\$2,213	\$1,854,589	\$7,598,949	24.4%	102.0	44.8

UNITS AND PROPERTIES OF THE CALIFORNIA STATE PARK SYSTEM

Fiscal Year 2002/03

DISTRICT/Sector/Park	Unit No.	County	ACREAGE		Waterfront Feet (000)	Individual Camp Sites	Group Camp Sites	Non-Camping Overnight Facilities	Individual Picnic Sites	Group Picnic Sites	Non-Motor. Trail Miles	
			DPR Owned	Other								
SIERRA DISTRICT												
Sierra District HQ Office												
Lake Tahoe Sector												
Burton Creek SP	348	PLA	1,890.3	0.0	0	0	0	0	0	0	20.9	
D.L. Bliss SP	303	ED	888.9	1,260.0	19,380	L	165	1	0	6	0	5.5
Emerald Bay SP	313	ED	594.7	870.0	21,050	L	121	0	0	0	5.0	
<i>Kings Beach SRA</i>	343	PLA	7.7	0.0	879	L	0	0	0	26	0	0.0
Lake Valley SRA	382	ED	155.4	0.0	2,750	R	0	0	0	0	0.0	
Sugar Pine Point SP	339	ED	2,324.5	0.0	7,700	L	100	10	0	32	1	11.8
Tahoe SRA	302	PLA	61.7	0.0	1,245	L	26	0	0	3	0	0.0
					80	R						
Ward Creek	349	PLA	173.0	0.0	0		0	0	0	0	0	0.0
Washoe Meadows SP	390	ED	627.7	0.0	3,750	R	0	0	0	0	0	3.7
Sierra Nevada Sector												
Bodie SHP	324	MNO	1,064.5	0.0	0		0	0	0	10	0	7.6
Donner Memorial SP	301	NEV	383.9	0.0	8,800	L	149	0	0	48	0	7.5
		PLA	645.9	0.0	2,580	R						
Grover Hot Springs SP	322	ALP	553.4	0.0	0		76	0	0	20	0	2.9
Mono Lake Tufa SR	366	MNO	0.0	17,000.0	245,995	L	0	0	0	3	0	3.6
Plumas-Eureka SP	321	PLU	4,424.3	0.0	0		67	1	0	12	0	17.0
SIERRA DISTRICT TOTALS			13,796.0	19,130.0	305,049	L	704	12	0	160	1	85.4
					9,160	R						
SILVERADO DISTRICT												
Silverado District HQ Office												
Annadel SB	246	SON	5,093.7	0.8	0		0	0	0	8	0	33.1
Bale Grist Mill SHP	251	NAP	0.8	0.0	0		0	0	0	0	0	1.7
Benicia SRA	224	SOL	446.7	0.0	17,775	O	0	0	0	4	0	5.3
Benicia Capitol SHP	221	SOL	0.9	0.0	0		0	0	0	0	0	0.0
Bothe-Napa Valley SP	240	NAP	1,780.2	0.0	0		46	1	0	50	1	9.5
		SON	210.5	0.0								
Jack London SHP	241	SON	1,431.2	179.6	0		0	0	0	11	1	12.5
Petaluma Adobe SHP	219	SON	41.2	0.0	0		0	0	0	10	0	0.5
Robert Louis Stevenson SP	215	LAK	276.7	0.0								
		NAP	3,489.7	568.2	0		0	0	0	0	0	16.0
		SON	1,544.4	0.0								
Sonoma SHP	243	SON	63.6	0.0	0		0	0	0	13	13	0.0
Sugarloaf Ridge SP	247	NAP	138.5	0.0	0		49	2	0	20	1	30.5
		SON	3,644.7	0.0								
Clear Lake Sector												
Anderson Marsh SHP	701	LAK	1,078.7	1.5	12,486	L	0	0	0	1	0	5.1
Clear Lake SP	218	LAK	590.0	0.0	5,200	L	149	1	0	1	1	6.3
SILVERADO DISTRICT TOTALS			19,831.1	750.1	17,686	L	244	4	0	118	17	120.3
TOTALS					17,775	O						

UNITS AND PROPERTIES OF THE CALIFORNIA STATE PARK SYSTEM

Fiscal Year 2002/03

VISITOR ATTENDANCE			REVENUE				Authorized Base Budget	Authorized Staffing Levels		
Day Use	Camping	Total	User Fees	Concessions	Misc.	Total	Operating Costs (\$)	Revenue as % of Oper. Cost	Perm Full Time	Temp PY Equiv.
SIERRA DISTRICT										
			\$58,258	-\$517	\$518	\$58,259	\$4,571,387		53.0	23.7
	0	0	\$0	\$0	\$0	\$0				
	12,849	60,181	\$172,966	\$0	\$253	\$173,219				
	493,934	31,806	\$114,811	\$1,421	\$142	\$116,374				
	-	-	\$0	\$0	\$0	\$0				
	0	0	\$0	\$719,988	\$0	\$719,988				
	22,075	51,873	\$174,377	\$6,820	\$542	\$181,739				
	-	-	\$31,521	\$6,532	\$24,105	\$62,158				
	0	0	\$0	\$0	\$0	\$0				
	3,632	0	\$0	\$0	\$0	\$0				
	138,871	0	\$75,086	\$1,026	\$0	\$76,111				
	145,580	38,268	\$173,385	\$12,555	\$412	\$186,352				
	80,609	40,839	\$249,039	\$50	\$547	\$249,637				
	286,184	0	\$286,184	-\$12	\$0	-\$12				
	62,141	24,352	\$69,466	\$609	\$441	\$70,516				
	1,245,875	247,319	\$1,118,896	\$748,483	\$26,962	\$1,894,341	\$4,571,387	41.4%	53.0	23.7
SILVERADO DISTRICT										
			\$1,950	\$13,185	\$31	\$15,166	\$3,929,497		56.5	16.8
	189,879	0	\$2,760	\$0	\$0	\$2,760				
	19,857	0	\$13,221	\$0	\$0	\$13,221				
	248,324	0	\$11,330	\$0	\$12	\$11,342				
	8,814	0	\$25,282	\$0	\$0	\$25,282				
	32,417	42,915	\$152,642	\$121	\$163	\$152,926				
	66,813	0	\$56,305	\$0	\$5	\$56,310				
	39,376	332	\$7,103	\$0	\$0	\$7,103				
	25,878	0	\$200	\$0	\$0	\$200				
	518,399	0	\$68,507	\$162	\$0	\$68,669				
	66,476	18,639	\$90,694	\$0	\$115	\$90,809				
			\$1,274	\$0	\$0	\$1,274				
	43,759	0	\$69	\$0	\$0	\$69				
	51,823	61,182	\$183,418	\$2,799	\$337	\$186,555				
	1,311,815	123,068	\$614,753	\$16,267	\$662	\$631,683	\$3,929,497	16.1%	56.5	16.8

UNITS AND PROPERTIES OF THE CALIFORNIA STATE PARK SYSTEM

Fiscal Year 2002/03

DISTRICT/Sector/Park	Unit No.	County	ACREAGE			Waterfront Feet (000)	Individual Camp Sites	Group Camp Sites	Non-Camping Overnight Facilities	Individual Picnic Sites	Group Picnic Sites	Non-Motor. Trail Miles
			DPR Owned	Other								
ANGELES DISTRICT TOTALS			69,569.6	10,579.7		218,943 L 69,616 O	629	10	0	1,170	10	194.9
BAY AREA DISTRICT TOTALS			36,633.2 0.0 0.0	3,469.5 0.0 0.0		103,000 L 128,819 O 824 R	332	12	6	336	26	227.2
CALAVERAS DISTRICT TOTALS			5,885.1	20.6		26,400 R	160	2	8	56	2	52.0
CAPITAL DISTRICT TOTALS			321.5	0.2		1,065 R	0	0	0	0	0	0.0
CHANNEL COAST DISTRICT TOTALS			8,242.5 0.0	759.9 0.0		129,795 O 1,550 R	770	13	0	274	2	52.3
COLORADO DESERT DISTRICT TOTALS			605,793.0	19,844.9		89,280 L 44,005 R	2,133	20	7	231	6	907.3
FOUR RIVERS DISTRICT TOTALS			97,903.1	30,354.5		41,400 L 535,150 R	461	26	0	271	5	365.4
GOLD FIELDS DISTRICT TOTALS			14,529.0	52,522.6		712,440 L 174,550 R	397	10	4	519	12	339.5
INLAND EMPIRE DISTRICT TOTALS			30,907.5	5,240.0		121,440 L	765	25	0	2,224	5	162.2
MARIN DISTRICT TOTALS			14,224.1	118.3		64,100 O	145	6	50	215	12	132.8
MENDOCINO DISTRICT TOTALS			19,703.0	4,439.2		6,000 L 151,920 O 173,458 R	473	9	104	38	0	59.8
MONTEREY DISTRICT TOTALS			15,015.7	2,544.2		165,992 O 56,100 R	298	3	374	74	5	79.8
NORTH COAST REDWOODS DISTRICT TOTALS			127,664.0	257.3		85,996 L 193,209 O 470,789 R	1,289	11	1	133	10	274.4
NORTHERN BUTTES DISTRICT TOTALS			12,016.6	29,328.6		961,860 L 120,563 R	1,691	26	0	378	7	122.7
ORANGE COAST DISTRICT TOTALS			3,290.7	3,452.0		95,049 O	761	2	0	165	21	62.5
RUSSIAN RIVER DISTRICT TOTALS			19,804.9	1,697.0		166,634 O 26,631 R	326	1	0	195	1	65.2
SAN DIEGO COAST DISTRICT TOTALS			6,291.3	1,634.0		83,810 O	393	2	0	191	34	24.5
SAN JOAQUIN DISTRICT TOTALS			2,461.4	6,553.5		233,040 L	227	7	0	221	3	2.0
SAN LUIS OBISPO COAST DISTRICT TOTALS			13,102.9	639.0		1,200 L 161,608 O	639	7	0	58	16	78.5
SANTA CRUZ DISTRICT TOTALS			47,977.2	17.0		10,620 L 74,768 O 47,053 R	696	21	36	426	7	344.7
SIERRA DISTRICT TOTALS			13,796.0	19,130.0 0.0		305,049 L 9,160 R	704	12	0	160	1	85.4
SILVERADO DISTRICT TOTALS			19,831.1	750.1		17,686 L 17,775 O	244	4	0	118	17	120.3
NON-OHV MR DISTRICT (22) TOTALS			1,184,963.1	193,351.7		2,907,954 L 1,503,095 O 1,687,298 R	13,533	229	590	7,453	202	3,753.3

Note: The former San Simeon Dist. and its three units were incorporated into the San Luis Obispo Coast Dist. on 11-1-

UNITS AND PROPERTIES OF THE CALIFORNIA STATE PARK SYSTEM

Fiscal Year 2002/03

VISITOR ATTENDANCE			REVENUE				Authorized Base Budget	Authorized Staffing Levels		
Day Use	Camping	Total	User Fees	Concessions	Misc.	Total	Operating Costs (\$)	Revenue as % of Oper. Cost	Perm Full Time	Temp PY Equiv.
3,924,003	444,185	4,368,188	\$1,726,791	\$435,300	\$1,724	\$2,163,815	\$9,694,665	22.3%	108.8	39.4
3,004,035	102,875	3,106,910	\$1,021,828	\$916,586	\$45,958	\$1,984,371	\$4,345,643	45.7%	61.0	20.1
776,696	52,943	829,639	\$0	\$291,775	\$1,448	\$551,177	\$1,774,267	31.1%	29.0	3.4
1,461,597	0	1,461,597	\$616,249	\$52,037	\$83	\$668,369	\$6,071,458	11.0%	86.6	30.2
1,706,859	880,883	2,587,742	\$2,678,753	\$50,912	\$1,462	\$2,731,127	\$5,545,585	49.2%	73.0	42.8
1,204,071	391,650	1,595,721	\$881,576	\$10,460	\$237,109	\$1,129,144	\$4,834,116	23.4%	64.0	22.2
967,143	125,854	1,092,997	\$690,900	\$9,079	\$1,095	\$701,074	\$3,368,601	20.8%	47.7	15.2
2,344,110	106,881	2,450,991	\$1,976,700	\$215,110	\$5,456	\$2,197,267	\$6,483,234	33.9%	98.0	32.0
2,017,101	386,125	2,403,226	\$1,975,846	\$345,553	\$3,112	\$2,324,511	\$7,797,516	29.8%	113.0	45.2
1,516,664	137,956	1,654,620	\$609,803	\$196,481	\$3,137	\$809,421	\$3,640,336	22.2%	50.0	16.2
2,291,058	261,229	2,552,287	\$750,684	\$39,660	\$1,140	\$791,483	\$2,502,540	31.6%	36.0	12.7
4,873,779	389,505	5,263,284	\$1,178,298	\$1,966,371	\$421	\$3,145,089	\$6,144,501	51.2%	81.0	22.7
1,427,145	391,760	1,818,905	\$1,463,833	\$19,809	\$1,640	\$1,485,282	\$4,897,572	30.3%	75.0	24.9
2,007,310	138,000	2,145,310	\$950,240	\$395,443	\$1,161	\$1,346,844	\$5,319,260	25.3%	67.0	28.7
11,468,430	494,555	11,962,985	\$6,270,179	\$1,132,627	\$18,191	\$7,420,998	\$9,875,306	75.1%	115.0	107.4
4,417,454	164,996	4,582,450	\$616,408	\$2,717	\$3,952	\$623,077	\$3,342,189	18.6%	42.0	18.4
13,361,353	596,723	13,958,076	\$2,372,960	\$2,660,611	\$115,054	\$5,148,625	\$6,876,242	74.9%	86.0	62.9
592,064	62,609	654,673	\$621,469	\$39,150	\$1,710	\$662,328	\$3,006,268	22.0%	41.0	6.5
3,308,696	272,084	3,580,780	\$7,058,644	\$1,541,555	\$303,433	\$8,903,631	\$13,433,782	66.3%	145.0	109.0
8,276,439	560,987	8,837,426	\$1,475,694	\$376,682	\$2,213	\$1,854,589	\$7,598,949	24.4%	102.0	44.8
1,245,875	247,319	1,493,194	\$1,118,896	\$748,483	\$26,962	\$1,894,341	\$4,571,387	41.4%	53.0	23.7
1,311,815	123,068	1,434,883	\$614,753	\$16,267	\$662	\$631,683	\$3,929,497	16.1%	56.5	16.8
73,503,697	6,332,187	79,835,884	\$36,928,457	\$11,462,667	\$777,122	\$49,168,246	\$125,052,914	39.3%	1,630.6	745.2

UNITS AND PROPERTIES OF THE CALIFORNIA STATE PARK SYSTEM

Fiscal Year 2002/03

DISTRICT/Sector/Park	Unit No.	County	ACREAGE		Waterfront Feet (000)	Individual Camp Sites	Group Camp Sites	Non-Camping Overnight Facilities	Individual Picnic Sites	Group Picnic Sites	Non-Motor. Trail Miles
			DPR Owned	Other							
OHVMR DISTRICTS (5)											
OHVMR Division HQ Office											
Clay Pit SVRA (a)	155	BUT	0.0	220.1	0	0	0	0	0	0	0.0
OHVMR Division HQ Office Totals			0.0	220.1	0	0	0	0	0	0	0.0
HOLLISTER HILLS OHVMR DISTRICT											
Hollister Hills SVRA	244	SBT	6,361.5	260.0	0	0	1	0	0	0	5.0
HOLLISTER HILLS DISTRICT TOTALS			6,361.5	260.0	0	0	1	0	0	0	5.0
HUNGRY VALLEY OHVMR DISTRICT											
Hungry Valley SVRA	521	LA VEN	11,764.9 6,621.3	0.0 0.0	0	150	0	0	0	0	0.5
HUNGRY VALLEY DISTRICT TOTALS			18,386.2	0.0	18,386	150	0	0	0	0	0.5
OCEANO DUNES OHVMR DISTRICT											
Oceano Dunes SVRA	264	SLO	2,402.5	275.4	14,832 O	1,000	0	0	0	0	0.9
OCEANO DUNES DISTRICT TOTALS			2,402.5	275.4	14,832	1,000	0	0	0	0	1
OCOTILLO WELLS OHVMR DISTRICT											
Heber Dunes SVRA	444	IMP	0.0	341.5	0	8	0	0	0	0	0.0
Ocotillo Wells SVRA	439	IMP SD	35,410.2 12,735.4	0.0 0.0	0	110	0	0	0	0	0.0
OCOTILLO WELLS DISTRICT TOTALS			48,145.6	341.5	0	118	0	0	0	0	0
TWIN CITIES OHVMR DISTRICT (a)											
Carnegie SVRA	272	ALA SJ	3,810.6 1,225.8	0.0 36.0	0	22	0	0	50	0	0.0
Prairie City SVRA	367	SAC	834.8	1.3	0	0	0	0	15	1	0.0
TWIN CITIES DISTRICT TOTALS			5,871.2	37.3	0	22	0	0	65	1	0
OHVMR DISTRICTS (5) TOTALS			81,167.0	1,134.4	14,832 O	1,290	1	0	65	1	6.4

(a) Clay Pit SVRA is operated under contract by the Northern Buttes District.

UNITS AND PROPERTIES OF THE CALIFORNIA STATE PARK SYSTEM

Fiscal Year 2002/03

VISITOR ATTENDANCE			REVENUE				Authorized Base Budget	Authorized Staffing Levels			
Day Use	Camping	Total	User Fees	Concessions	Misc.	Total	Operating Costs (\$)	Revenue as % of Oper. Cost	Perm Full Time	Temp PY Equiv.	
							OHVMR DISTRICTS (5)				
							\$17,100,849		110.0	29.4	
16,434	0	16,434	\$0	\$0	\$0	\$0					
16,434	0	16,434	\$0	\$0	\$0	\$0					
117,746	45,498	163,244	\$0	\$0	\$0	\$0					
117,746	45,498	163,244	\$0	\$0	\$0	\$0					
479,014	18,123	497,137	\$0	\$0	\$0	\$0					
479,014	18,123	497,137	\$0	\$0	\$0	\$0					
1,184,861	221,062	1,405,923	-\$100	\$0	\$542	\$442					
1,184,861	221,062	1,405,923	-\$100	\$0	\$542	\$442					
30,546	-	30,546	\$0	\$0	\$0	\$0					
213,600	339,429	553,029	\$0	\$0	\$0	\$0					
244,146	339,429	583,575	\$0	\$0	\$0	\$0					
135,368	4,990	140,358	\$0	\$0	\$0	\$0					
141,509	0	141,509	\$0	\$0	\$0	\$0					
276,877	4,990	281,867	\$0	\$0	\$0	\$0					
2,319,078	629,102	2,948,180	-\$100	\$0	\$542	\$442	\$17,100,849	0.0%	110.0	29.4	

UNITS AND PROPERTIES OF THE CALIFORNIA STATE PARK SYSTEM

Fiscal Year 2002/03

	ACREAGE			PUBLIC USE FACILITIES					
	DPR Owned (a)	Other (a)	Waterfront Feet (000)	Individual Camp Sites	Group Camp Sites	Non- Camping Overnight Facilities	Individual Picnic Sites	Group Picnic Sites	Non- Motor. Trail Miles
STATE PARK SYSTEM TOTALS	1,266,130.2	194,486.1	2,907,954.0 L 1,517,926.6 O 1,687,298.0 R	14,823	230	590	7,518	203	3759.7
Minor System Properties (a)	80.6	0.1	-	-	-	-	-	-	-
DEPARTMENT OF PARKS AND RECREATION TOTALS	1,266,210.8	194,486.2	2,907,954.0 L 1,517,926.6 O 1,687,298.0 R	14,823	230	590	7,518	203	3,759.7

UNITS AND PROPERTIES OF THE CALIFORNIA STATE PARK SYSTEM

Fiscal Year 2002/03

VISITOR ATTENDANCE			REVENUE				Authorized Base Budget	Authorized Staffing Levels		
Day Use	Camping	Total	User Fees	Concessions	Misc	Total	Operating Costs (\$)	Revenue as % of Oper. Cost	Perm Full Time	Temp PY Equiv.
75,822,775	6,961,289	82,784,064	\$36,928,357	\$11,462,667	\$777,665	\$49,168,688	\$142,153,763	34.6%	1740.6	774.6
-	-	-	-	-	-	-	-	-	-	-
75,822,775	6,961,289	82,784,064	\$36,928,357	\$11,462,667	\$777,665	\$49,168,688	\$142,153,763	34.6%	1740.6	774.6

This page intentionally left blank.

CHAPTER 4

Basic Statistics- Definition of Terms

This page intentionally left blank.

CHAPTER 4 - BASIC STATISTICS – DEFINITION OF TERMS

This statistical report uses a variety of data categories to measure the scope, scale, activities and operations of the State Park System during the course of the fiscal year. These data categories are indicated by the column headings in the extensive table found in Chapter 3. The text of that chapter indicated which of these data sets were current as of the first of the fiscal year, July 1, as of the end of the fiscal year, June 30 or reflect what has taken place in the course of the year. The table itself indicates the level at which this data is collected, from the individual unit, from the sector, or from the district as a whole.

This chapter provides definitions or characterizations of each of this report's data categories, along with some information on how their information is created and processed within the Department. Where appropriate, background information on certain data categories is provided to allow the reader to know something of what is behind the data and to understand the strengths and weaknesses of the numbers that are available for use. These definitions appear below.

* * * * *

Park Name – With rare exception, classified units are named by the California State Park and Recreation Commission, based on recommendations made by the Director. A very few units have been named by the Legislature. The unit's name usually reflects a geographic feature or an individual or group of people historically associated with the unit. Prior to their classification, newly acquired properties are given temporary names for working purposes. Information source: Park and Recreation Commission; Office of Acquisition and Real Property Services.

Park Classification - With rare exception, units are classified by the California State Park and Recreation Commission, based on recommendations made by the Director. A very few units have been classified by the Legislature. These recommendations are based on the options found in Public Resources Code Section 5019 *et seq.* Each unit is given a classification that best reflects the unit's primary values and the purposes for which the property was acquired and is to be managed. Information source: Park and Recreation Commission

Unit Number - The "unit number" is the last three digits of a unique six-digit number assigned by the Accounting Services Section to each of the classified units and major unclassified properties of the State Park System. Such six-digit numbers are also assigned to the Department's various other organizational components - divisions, sections, and offices. A major purpose of these numbers is to identify and track money, staff and other resources allocated to and used by these various activity centers. Information source: Accounting Services Section.

County - This shows the county or counties in which the unit or property is located. The abbreviations for the county names conform to the standard used throughout California state government. Information source: Office of Acquisition and Real Property Services.

Acreage- This is the surface acreage of the lands and waters which constitute each classified unit and major unclassified property. This information is based on county assessor's maps, descriptions, and any notations regarding easements or claims on these properties. The acreage of the lands in the California State Park System is also recorded, on a parcel-by- parcel basis, in the assessor's books of the counties where the lands are situated.

The addition or removal of acreage from the System's database is a continuous process. In any instance, it is accomplished at the time that the appropriate records are received and processed by the Department. This may not coincide with the time of the recording of deeds, payment of funds, or movement of other paperwork. Information source: Office of Acquisition and Real Property Services.

- DPR-Owned – those lands which are owned in fee by the Department. Some of these lands, however, may be subject to easements and certain other restrictions.
- Other – those lands which are owned in fee by another government agency, non-profit organization or private entity, but which are operated as part of the State Park System through an agreement with the Department. The form of these agreements includes leases, permits, easements, operating agreements and memorandums of understanding.

Waterfront Feet - Water, in the form of lakes, streams and ocean shoreline are important park features, from both an environmental and recreational standpoint. Data on the presence and magnitude of this feature is measured in terms of its frontage, the edge it presents to or within the unit or property. The three types of waterfront feet are reported separately - for natural lakes and reservoirs ("L"), for rivers ("R"), and for the shore of the Pacific Ocean and its major estuaries ("O"). The data in this column is rounded to the nearest thousand feet (000). Information source: Office of Acquisition and Real Property Services.

Public Use Facilities - The properties of the State Park System provide a wide range of public use facilities, including picnic sites, camp sites, overnight shelters, trails, boat launching ramps, restrooms, roads, parking areas, interpretive centers and campfire centers. The three most common general types of public use facilities are those used by visitors for overnight use, for picnicking and for moving about the park on trails, by means of foot, horse or bicycle.

Earlier statistical reports were inconsistent in their definitions of these three types of facilities. Such reports did not have data on certain subcategories of facilities;

in the case of overnight use facilities, group camps were seldom reported and data on structural overnight facilities had never been collected. To obtain the current and detailed data that was needed for this report, a special unit-by-unit survey was accomplished in the summer of 2003, seeking information that was current as of June 30, 2003. The details of this survey are contained in Appendix B. Information source: State Park System Planning Section, Planning Division.

- Individual/Family Camp Sites - This category is the sum of seven survey subcategories. Each subcategory is briefly described here and fully described in Appendix B.
 1. Primitive/Undeveloped – each site accommodates up to eight people and two vehicles; tent space, stove, table and nearby piped water, chemical or vault toilet. Some of these amenities may not be available in every case.
 2. Developed – each site accommodates up to eight people and two vehicles; designated parking, tent or RV space, stove, table and nearby piped water, and restroom with flush toilets and hot water; may include showers and laundry sinks.
 3. RV Hookup – each site accommodates up eight people and two vehicles in a designated space and provides paved spur for RV, as well as hookups for electricity, water and sewage disposal.
 4. Environmental/Trail – a designated primitive site in a relatively undisturbed setting, accessible by foot path or trail.
 5. Hike/Bike – a designated area with tent space, table, fire rings or stove with water and toilet facilities nearby, accessible by foot path or trail.
 6. Floating Campsites – tent space, table, stove and toilet facilities on a floating platform, accessible only by boat.
 7. Dock Berths, Offshore Mooring Buoys – a place to tie up a boat, which itself may serve for overnight use; some units with mooring buoys have an assigned campsite on land.

- Group Camp Sites – This category is the sum of two subcategories. Each subcategory is briefly described here and fully described in Appendix B.
 1. Tent or RV Use - primitive or developed – an area with space for many tents or RVs, providing many tables, stoves, water sources, and restrooms, designed to be used by a large group of people; often available by reservation only.
 2. Horse camps – primitive or developed – as above, but with added facilities needed for the management of horses.

- Non-Camping Overnight Facilities - This includes tent cabins, rustic cabins, shelters, yurts and bark houses, as well as lodges, motel facilities, hostel facilities, and modern cabins.

- Individual or Family Picnic Sites – These are small areas with tables, stoves or fire rings, with nearby parking, water and restrooms. These sites are sometimes used by groups but are intended mainly for individuals or families.
- Group Picnic Sites - These are large areas with a number of tables, stoves or fire rings, with nearby parking, water and restroom facilities, often used by reservation only.
- Non-Motorized Trails – This category is the sum of three subcategories. These facilities are unpaved pathways or trails for use by one or more of three types of users: foot, horse and bicycle. This category includes designated interpretive trails, as well as short trails which may be paved or hardened for the use of visitors with disabilities. It includes unimproved (dirt or gravel) service roads and fire roads which are used as trails, but does not include paved service roads that are not intended as trails but may be unofficially used as such by visitors. It does not include any trails used by off-highway motor vehicles.

Note that the Planning Division’s survey of public use facilities provided certain figures that were at variance from those which had been developed in recent years. The data developed by the Division’s survey will be considered to be correct and official.

Visitor Attendance - Data on visitor attendance reflects an estimate of the number of individual visits (not the number of individual visitors) to the units of the State Park System during the fiscal year. Using this approach, an individual visiting three units in a day is recorded in the attendance data three times rather than one.

Attendance data is collected at the unit level, sent to the district offices, and thereafter conveyed to the Field Services Division in Headquarters. Some units or districts may collect a variety of more detailed attendance or visitor use data (e.g. attendance at a specific area or facility, like a boat launching ramp), but only the unit-wide data on three required categories – free day use, paid day use, overnight use - are conveyed to headquarters to be used for systemwide records. Source: Field Services Division.

The two different categories of visitor attendance reported in this statistical report are generated in different ways, and their consistency and accuracy differ widely.

- Day Use – This is the number of day (non-overnight) visits to the unit in question. “Day use”, as used in this column, includes both free day use and day use for which a fee is paid for entry into the park. Day use includes park entry by any means, by motor vehicle of any type, on foot, on bicycle, by boat or on horseback. A single visit is counted regardless of the length of stay or variety of activities undertaken. Historically, approximately 30% of day use is

paid and the remainder is free. Day use admission based on the use of annual passes is included in this data.

- Camping - This is the number of overnight visits to the unit in question, visitors using the many types of sites and structures listed above, as well as using temporary overflow areas.

Not all units collect visitor attendance information for day use and overnight use in the same way. In a few instances, usually historic units with per-person admission charges, there are actual counts of visits. In most units, however, attendance figures are the results of making estimates, using various techniques and producing results of widely different levels of accuracy. The estimation techniques may range in quality from one unit to the next and they may be changed at any unit at any time. While the accuracy of these figures has substantial limitations, it is believed that in the aggregate, over time, orders-of-magnitude and broad trends in visitor use can be determined with some validity.

It is clear that, for the entire System, total attendance is underestimated for three reasons.

1. Little or no data is collected from System-operated units which are small, remote and little used, where gathering this information would not be cost-effective;
2. Data is rarely collected from units which, in large part or in their entirety, are managed not by the System but by another agency or organization through an operating agreement. Many of these units are heavily used ocean beach units with substantial attendance.
3. The failure to report all of the visitors who spend the night in a unit not through traditional camping but instead through the occupancy of such structures as lodges, cabins, yurts, and hostels. A new reporting system should improve this situation.

Revenue - Revenue at the field level is the income flowing into a park unit, or into a sector or a district office as a result of parklands and facilities being used by visitors or organizations for a wide range of approved purposes. Information on field-level revenue is generated at the district level and is reported to the Accounting Section and subsequently to the Budget Section in Headquarters. Information source: Budget Section.

The revenue figures used in this report are year-end totals, current as of June 30 of the year, as reported each year in the "Actual" column in the *Governor's Budget*. Four of the six CalStars revenue categories shown there are needed for this statistical report, reflecting revenue coming directly from the "field." In the budget document, there is separate information for the basic 23-district State Park System and for the 5-district OHMVR Division, information which is combined for the purposes of this statistical report. A third and very small

category revenue, that from the Department's systems of Sno-park facilities, is not included.

- Fees – These are admissions and use fees paid by the visitor, including fees for admission, parking, camping and the use of other park facilities such as boat launch ramps and pay showers. This category includes money from the sale of day use admission passes and Hearst Castle ® tours. This revenue source is represented by CalStars category 140600, State Beach and Park Service Fees.
- Concessions – The bulk of this revenue category is the income from the rentals paid by concessionaires, private entrepreneurs who under contract provide goods and services to park visitors on state park lands. This category also includes the leases of System lands, dwelling rental, and receipts for special events and filming. In the OHMVR Division, the bulk of this money comes from the sale of OHV licenses (“green stickers”) and from the interest on funds which it has in reserve. This revenue category is represented by CalStars category 152300, Miscellaneous Revenues from Use of Property & Money.
- Miscellaneous – This revenue is the combination of two CalStar categories, 161400, Miscellaneous Revenue, and 164200, Parking Violations.

Revenue earned by or funds transferred to the State Park System at the headquarters level is not reported in this statistical report.

Operating Costs - These are funds from the Department's annual budget which provide for the operation and management of the “field” portion of the State Park System, as described in the Introduction to this report. These monies fund the staff, equipment, utilities and supplies needed to serve the visiting public, to maintain and renovate facilities, and to protect and manage the system's natural and cultural resource base. The operating costs reported in this statistical report are reported each year in the “Actual” column in the Governor's Budget. Information Source: Budget Section.

These funds are allocated by the Field Services Division directly to the individual districts, thereby allowing each district the flexibility to make allocations and reallocations throughout the year to its various units based on changing need.

Revenue as % of Operating Costs - A computation made to indicate in a rough way the degree to which a State Park System as a whole or any of its districts are “self-supporting”, a point where revenue equals or exceeds operating costs. The district figure ranges widely, depending largely on the revenue-generating capability of the units and properties within a district. Also important in determining the size of this figure is the degree to which the operation of the district's set of units is particularly labor-intensive and whether the district's units

and properties are located close to one another or are widely distributed.
Source: Planning Division computations.

Staffing - The operation and management of the units and properties of the State Park System, as well as the district and sector offices, requires a large and diverse professional staff. The two staffing categories of concern here are permanent full-time staff (indicated as the number of positions) and temporary staff (measured in terms of person-year equivalents). No information is readily available for a third and very important category of staffing, the large amount of seasonal staffing that is used mostly during the summer months. Information on the annual quantity of what might be deemed another types of staffing, that of non-paid volunteer work, is available from the Interpretation and Education Division.

The data provided in this report is for positions that were authorized rather than those that were actually filled during the fiscal year. These figures are reported annually in the *Governor's Budget*. Information source: Budget Section.

- Permanent, full time – These are individuals who have permanent civil service status in a wide range of job classifications. They work year-around for the standard 1816 hours per year.
- Temporary/PY equivalent – “Temporary” includes permanent intermittent, seasonal and retired annuitant positions. Many of these employees are normally required during the parks’ busy season, when visitor use is heaviest. A person-year (PY) equivalent is 1816 hours of work, whether it requires two, three or more individuals to accomplish it.

This page intentionally left blank.

CHAPTER 5

Other Available Statistics

This page intentionally left blank.

CHAPTER 5 - OTHER AVAILABLE INFORMATION

In addition to the basic statistics or data sets shown in the table in Chapter 3, the State Park System regularly collects a wide variety of other useful information which records and measures many of its activities and operations. Some of this information is portrayed in descriptive or graphic terms as well as in numerical form. Certain material is available through the Department's Internet and Intranet sites, with a wider range being available directly from specific sources within the Department.

A. Internet/Intranet

Two general sources of information about the Department and the State Park System are the Department's Internet web site and its internal Intranet site. These sites contain useful information about the Department and the State Park System. They contain information about the individual park units and their attractions, and about a variety of special topics of current relevance to the System. Also available is information about the Department's organizational components and some of the work which they do. These latter references make available the contents of a variety of reports, studies and data sets, as well as general information about the Department and its State Park System. Most of the contents of the Internet and Intranet are expanded and updated on a periodic basis.

The Internet site is available to the general public at <http://www.parks.ca.gov>. The Intranet is available only for those with access to the Department's internal communication system, and is found at <http://isearch.parks.ca.gov>. With both sites, the approach to seeking information is to access the site and conduct a search to determine if it contains what is wanted.

B. Direct Sources

A wide variety of specialized data and information can be obtained directly from the organizational units of the Department that produce it. A phone call or email is the search mechanism appropriate here.

In the following listing, selected areas or topics of information are specified and very briefly described. In the case of each item, the Department's organizational source or location of the information is indicated, in terms of the appropriate division, office, section or unit. In addition, a specific resource person is indicated, along with their phone number and email address. These

organizational and personal references are current as of the time of this writing, August of 2003, and are subject to change over time.

Most of the information referred to below may be made available upon request. Some of it may be available immediately in hard copy, while much of it exists only in a computer database which can be accessed only by the program manager. In many cases, the level and format of the data can be tailored to the specific needs of the individual making the request.

These more specialized areas of information and their organizational sources are as follows.

* * * * *

Accidents - Included here is information from the field on calls for assistance, reports taken and filed, and actions taken as a matter of public safety. Assistance may include first aid, getting needed help, search-and-rescue efforts and finding lost individuals. Incidents involving motor vehicles and boats are reported separately in two different categories.

- Contact Randy Sederquist, Public Safety Section, Field Services Division, Sacramento (916) 653-0398; rsede@parks.ca.gov.

Aerial Photo Files - Aerial photographs provide important information on land use and conditions in and around State Park System lands. Aerial photographs are routinely purchased by the Department for many planning and management purposes. The primary repository and catalogue system for 9"x9" color, infrared, and black and white aerial prints are maintained by the Natural Resources Division in Sacramento.

- Contact: Jim Trumbly, Natural Resources Division, Sacramento (916) 653-0875; jtrum@parks.ca.gov.

Archaeological Collections - This database contains a master list of all archaeological artifact collections, by park unit, which is maintained by the Department's Archaeological Collections Research Facility. This archive also includes all of the notes, records and photos related to archaeological collections and fieldwork.

- Contact Glenn Farris, Senior State Archaeologist, Cultural Resources Division, West Sacramento (916) 375-5921; gfarr@parks.ca.gov.

Condition Assessment Database - In 2002, the Department conducted an extensive systemwide survey of natural resources in the State Park System to establish a baseline on the general condition of park lands and detailed information on selected natural resource features. Information on such things as rare and endangered species, non-native plants and animals, natural habitats, geologic features and pollution, was collected from park resource specialists and

entered into a database. Information on over 195 of the System's park units is included in the database.

- Contact: Art Fong, Natural Resources Division, Sacramento (916) 653-9454; afong@parks.ca.gov.

Cooperating Associations - This database contains information on the formal independent nonprofit citizens' groups which contract with one or more park units to assist in the funding of those units' interpretive and educational programs and services. Information is available on the identity of each association, its name, address, phone number(s) and email address. Financial information, as reported by the associations, is also available.

- Contact: John D. Mott, Cooperating Associations Program Manager, Partnership Support, Interpretation and Education Division, Sacramento (916) 654-5379; jmott@parks.ca.gov.

Crimes - This database contains information on calls made, reports made, and actions taken by park staff relative to crime in and near State Park System units. Data includes information on investigations, warnings given, and arrests for alleged misdemeanors and crimes.

- Contact Randy Sederquist, Public Safety Section, Field Services Division, Sacramento (916) 653-0398; resed@parks.ca.gov

Cultural Resources: Sites, Structures, Registrations - Information on the number and type of cultural resources in the State Park System is found in the "Index to Historic and Archaeological Resources Owned by the California Department of Parks and Recreation. This index lists, by park unit, the number of (1) archaeological sites, (2) historic structures, (3) California Historic Landmarks, (4) National Register and California Register properties, (5) National Historic Landmarks, and (6) Cultural Preserves.

- Contact: John W. Foster, Senior State Archaeologist, Cultural Resources Division, Sacramento (916) 653-4529; jfost@parks.ca.gov

Facilities – Accessibility - In compliance with the federal Americans with Disabilities Act, the department in 2000 made a very detailed survey rating the accessibility by disabled persons of the facilities in the then-266 units of the State Park System. The level of access was rated as high, medium or low and the information used to set priorities for remedial action.

- Contact Linda Canar, Program Manager, Accessibility Section, Acquisition and Development Division, Sacramento (916) 445-8949; lcana@parks.ca.gov

Facilities – Data for Maintenance Purposes - For the purpose of programming the department's facility maintenance activity, the tens of thousands of structures, utilities and other built facilities in the State Park System were surveyed and recorded. In this particular information system, numbers of similar facilities (e.g. individual campsites) were defined as a single facility.

- Contact Valerie Bradshaw, Technical Services Section, Field Services Division, Sacramento (916) 653-8542; vbrad@parks.ca.gov.

Facilities – Museum Collections - Data on the condition of facilities used to house museum collections in the State Park System is found in the Museum Collections Facility Index (MCFI) database. Facilities which house collections are surveyed each year for compliance with museum standards for environmental conditions, security, fire protection, and documentation.

- Contact: Wendy W. Franklin, Museum Curator, Cultural Resources Division (916) 375-5916; wfran@parks.ca.gov.

Facilities – Three Visitor Facility Types in Detail - Through specific annual surveys, actual counts are made of the numerous different types of (1) overnight accommodation facilities, (2) picnic facilities and (3) the number and cumulative length of non-motorized trails in each classified unit and major unclassified property of the State Park System. This data includes information on the capacity of overnight and picnic facilities to accommodate visitors.

- Contact Philomene Smith, State Park System Planning, Planning Division, Sacramento (916) 651-8694; psmit@parks.ca.gov.

Flora and Fauna Databases - California State Parks and its contractor, the University of California, Davis, developed computer applications to record names of vertebrates and vascular plants that are found within park units. To date, CalParks Flora and CalParks Fauna contain inventory information for over 170 park units, a total of over 50,000 records. A companion application detailing actual observations of plant and animals within park units, “Observe-it”, holds records for over 90 park units. This second database has not been as widely used; at present there are over 4,500 animal observations and 190 plant records in the Observe-it database.

- Contact: Cynthia L. Roye, Associate State Park Resource Ecologist Natural Resources Division, Sacramento (916) 653-9083; croye@parks.ca.gov.

Incidents - This database contains information on public assistance events in park units that are not covered in any other public safety category, such as accidents or crimes.

Contact Randy Sederquist, Public Safety Section, Field Services Division, Sacramento (916) 653-0398; rsede@parks.ca.gov.

Interpretive programs - Data is available on twelve types of formal and informal programs that take place in park units, things such as guided hikes, craft demonstrations, Junior Ranger programs and off-site school programs. Information is provided on the number of each type of program given, hours of programming completed, the characteristics of the presenters and visitor attendance at the programs.

- Contact: John Werminski, Regional Interpretive Specialist, Interpretation and Education Division, Sacramento (916) 653-8959; jwerm@parks.ca.gov.

Legislative Districts - Each State Park System unit and property is located in one or more of three types of legislative districts - U. S. Congressional districts, State Senate districts and State Assembly districts. Information is available on the districts in which any park or property is located.

- Contact Vicki Perez, Legislation Office, Sacramento (916) 653-6887; vipere@parks.ca.gov.

The Museum System (TMS) database - Information about California State Parks' artifact and photographic collections, archaeological sites, and paleontological sites is available on "The Museum System," a database managed by the Cultural Resources Division. The database contains records of over 400,000 objects and over 12,000 sites located throughout the State Park System. Images are linked to approximately 100,000 records. The database may be accessed by authorized State Park employees through the wide-area network (WAN) or Internet connections.

- Contact: Yuk-Hoi (Winnie) Yeung, Museum Curator, Cultural Resources Division, (916) 654-4728; wyeun@parks.ca.gov.

Park Features, Attractions and Associations:

Information on a wide range of categories of features and attractions found in units of the State Park System (e.g. visitor centers, Native American sites, habitat types, blacksmithing demonstrations) is found in the 310-page Park-to-Park Index.

- Contact: Mary Helmich, Interpretive Programs Manager, Interpretive Planning and Programs, Education and Interpretation Division, Sacramento (916) 653-3913; mhelm@parks.ca.gov.

Photographic Archives:

Thousands of images of park units, cultural artifacts and important park-related persons are available. Media includes b/w prints and negatives, 35mm slides and color prints from slides.

- Contact: Will Jorae, Museum Curator I, Education and Interpretation Division, Sacramento (916) 375-5930; wjorae@parks.ca.gov.

Reservations for Campsites, Hearst Castle ®

A large share of the system's campsites and all of the tours of Hearst Castle ® are available by reservation. Information is available on the number of camp units subject to reservation and the number of reservations actually made for camping or Hearst Castle ® tours.

- Contact Jim Luscutoff, Reservations Manager, Field Service Division, Sacramento (916) 653-9463; jlusc@parks.ca.gov.

This page intentionally left blank.

CHAPTER 6

History of this Report

This page intentionally left blank.

CHAPTER 6 - HISTORY OF THIS REPORT

The first annual statistical report for the State Park System was published for the 1961-62 fiscal year. Prior to that, information on the System's acreage, facilities, attendance, income, expenditures and staffing was available largely from scattered sources within the Department and were on various occasions combined into a single publication for use in special studies or reports. Exhibit 1, below, provides a list of the documents which are recognizable as earlier statistical reports.

Following the publication of the System's first specific annual statistical report, for fiscal year 1961-62, identical or similar reports were issued covering the years through 1989-90. Most of these reports provided information for a single fiscal year, although some covered three or four fiscal years in a single volume. In a multi-year report, some items of data for a given fiscal year may be different than that which had been presented for that particular fiscal year in a previous year's report. This reflects the fact that the data was modified after the close of the original fiscal year by the addition of new information arriving after the end of the year. By convention, the data that is considered valid and used is that which is reported for the year in which the report was published, usually the smallest figure in any such series.

Over this 29-year period, these statistical reports were altered somewhat as to their title, the range of their information and their formatting. As the series developed, there was more analysis of the subject year's data and its comparison with that from previous years.

Due to an administrative reorganization and subsequent budgetary limitations, the creation and publication of the series of annual statistical reports ceased in 1990. During the following years, it became clear that such a report was needed, that it was very useful to have such information assembled annually and made readily available to staff at all levels, as well as to interested persons outside of the department.

In late 2002, the Department's Planning Division undertook to reinstitute this publication, to develop and publish once again a State Park System statistical report with at least the scope of the last one in the series, published eleven years earlier. The 2001/02 Statistical Report was the first product of this new effort.

The scope of the document was expanded to provide information and analysis well beyond that found in any prior statistical report for the State Park System. Among these additions are:

- The formatting of each district's units and properties (where appropriate) in terms of the sectors into which the district was organized at the end of the fiscal year;

- Very detailed information on the definitions, source of and quality of each set of basic data, often with cautions as to its use;
- Information on the availability, source and quality of a wide range of regularly collected State Park System data that is important but the inclusion of which was beyond the scope of the basic data set of the statistical report;
- A more detailed analysis of the year's basic data and some comparison with relevant data from earlier years, an effort that will be more useful in the coming years; and
- The inclusion of a large four-color map of California showing the System's district boundaries and the units and properties found within each district.

As mentioned in the Introduction, the statistics in this report are considered the Department's data "of record" and will be used as the basis for the reports, studies and analyses subsequently developed by Department staff.

EXHIBIT 1 - STATISTICAL REPORTS FOR THE STATE PARK SYSTEM

<u>Year</u>	<u>Document Title</u>
-------------	-----------------------

A. Division of Beaches and Parks

1949-50	} <i>Report on A Decade – May 2, 1960</i>
1950-51	
1951-52	
1952-53	
1953-54	
1954-55	
1955-56	
1956-57	
1957-58	
1958-59	
1959-60	not available
1960-61	not available
1961-62	<i>Annual Report 1961-62</i>
1962-63	<i>Annual Report 1962-63</i>
1963-64	<i>News and Views Statistical Report for the Division of Beaches and Parks 1963-64</i>
1964-65	<i>Statistical Information for the Division of Beaches and Parks: Fiscal Year 1964-65</i>
1965-66	<i>Division of Beaches and Parks: Statistical Report 1965-66 Fiscal Year</i>

B. Department of Parks and Recreation

1966-67	<i>Statistical Report for 1966-67 Fiscal Year</i>
1967-68	<i>Statistical Report for 1967-68 Fiscal Year</i>
1968-69	<i>Statistical Report for 1968-69 Fiscal Year</i>
1969-70	<i>1969-70 Fiscal Year Statistical Report</i>
1970-71	<i>1970-71 FY Statistical Report</i>
1971-72	<i>Statistical Report 1971-72 Fiscal Year</i>
1972-73	<i>Statistical Report 1972-73 Fiscal Year</i>
1973-74	<i>Statistical Report 1973-74 Fiscal Year</i>
1974-75	<i>Statistical Report 74-75 Fiscal Year</i>
1975-76	<i>Statistical Report 1975-76 Fiscal Year</i>

1976-77	} <i>Statistical Report 1976-77 Fiscal Year</i>

1977-78	<i>Statistical Report – Fiscal Years 1976-1977, 1977-1978, 1978-1979</i>
1978-79	
1979-80	<i>Statistical Report – Fiscal Year 1979-80</i>
1980-81	} <i>Statistical Report - Fiscal Years 1980-81, 1981-82, 1982-83, 1983- 84</i>
1981-82	
1982-83	
1983-84	
1984-85	} <i>Statistical Report – Fiscal Years 1984-85, 1985-86, 1986-87</i>
1985-86	
1986-87	
1987-88	
1988-89	<i>State Park System Statistical Report – Fiscal Year 1988/89</i>
1989-90	<i>Statistical Report – Fiscal Year 1989/90</i>
1990-91	not published
1991-92	not published
1992-93	not published
1993-94	not published
1994-95	not published
1995-96	not published
1996-97	not published
1997-98	not published
1998-99	not published
1999-00	not published
2000-01	not published
2001-02	<i>California State Park System Statistical Report: 2001/02 Fiscal Year</i>
2002-03	<i>California State Park System Statistical Report: 2002/03 Fiscal Year</i>

(see Appendix A in *California State Parks Statistical Report – 2001/02*)

APPENDICES

This page intentionally left blank.

APPENDIX A - SELECTED DATA – 1990/91 TO 2000/01

As indicated above, there were no issues of the State Park System annual statistical report published during the eleven fiscal years from 1990/1991 through 2000/2001. Thus, the important data which they would have contained is not available. This data gap makes it impossible to quickly find or construct a year-by-year series for the report's critical data categories, such as acreage, visitor attendance, revenue, operating costs and the like.

So that this missing data would not remain forever unavailable, an effort was made to locate it in the Department's hardcopy or electronic records. To locate or to create after the event at least some portion of these missing data sets, a search was made of the active or archived records of the Department. Appendix A of the 2001/02 Statistical Report contains a number of important categories of State Park System information that were located or created, thereby filling in as well as is possible the gap caused by the missing statistical reports. Those needing these data should consult that report.

As indicated in the 2001/02 Statistical Report, there are a variety of problems which made impossible the creation of some of the missing data in a context and format which matches that of this present document. There are many limitations in the historic data, and some of these limitations would apply even if the annual figures were readily available. In many cases, the definitions of data terms were not clear or have changed over time, making difficult a good transition in a data set from one fiscal year to a subsequent year where new definitions apply. In other cases, there may be changes in the methods of collecting data from the original field sources and processing it at headquarters.

Below the system-wide level of data, at the district-level of information, there is an insurmountable problem of consistency in the geographic aggregation of earlier unit-level data at the district level. It is not possible to be consistent because of the various field-level management reorganizations which have taken place over the eleven-year period. These reorganizations have altered the number and configurations (and even names) of the districts, and thus changed the number and identity of the units and properties which each contains.

With these factors in mind, the eleven years of missing information for the key data sets which were identified or were created presented only at the level of aggregation which reflects the State Park System as a whole. Where, over the course of the eleven years there have been changes in data definitions or collection processes, these matters were noted below the data tables as warning to the reader. In spite of the recognized, albeit unavoidable, shortcomings in this data, it will be considered the official data, the data "of record", for the purposes they represent.

As indicated above, these eleven-year data sets were made available in Appendix A of the 2001/02 Statistical Report in five sections, using in the same sequence in which the data sets appear in the table in this report's Chapter 3. These sections are:

1. Acreage
2. Public Use Facilities
3. Visitor Attendance
4. Revenue - Fees, Concessions, Miscellaneous
5. Operating Costs and Staff Levels

Where the reader seeks more detailed data than is provided in these tables, contact should be made with the Department's most appropriate division, office or section.

APPENDIX B - PUBLIC USE FACILITY SURVEY – FY 2002/03

To obtain the Public Use Facility information needed for the present statistical report, the Planning Division made an exhaustive unit-by-unit survey in the summer of 2003 to get exact figures for the following types of visitor facilities:

Overnight use facilities – individual (or “family”) and group campsites, as well as a variety of specific types of shelters, structures and commercial lodging accommodations

Picnic facilities – individual (or “family”) and group

Trails – mileage of paths and unimproved roadways available to users other than those using off-highway vehicles

A one-page survey form was completed by appropriate field staff for every classified unit and major unclassified property, providing information provided would reflect the situation as it was on June 30, 2003, the end of the 2002/03 fiscal year. An example of this form appears below.

As shown on the survey form, this instrument broke these three broad categories down into twenty-one subcategories, each of which was carefully defined so as to be mutually exclusive of the others. The instrument also sought information on the “visitor capacity” of each subcategory of overnight use and day use facility. This figure reflects the number of people (or in one case, boats) who could occupy the facilities at one time, a factor that is sometimes termed a facility’s “instantaneous capacity.” The spreadsheet, below, indicates the totals for each category and grouping of categories.

As indicated in the definition of public use facilities in Chapter 4, above, nineteen of the twenty-one subcategories were combined into the six categories of public use facilities reported in the present document. Because they were by their nature open-ended and poorly defined, and thus not subject to being precisely counted, the two subcategories of overflow camping were not used in the report.

This survey did not seek information on trails used by off-road vehicles because many of these facilities are not well defined and in some cases are indistinguishable from the “volunteer trails” from cross-country riding. The “Trails” data in statistical reports in fiscal year 1989-90 and earlier had contained trails used by off-road vehicles.

This page intentionally left blank.

2002-2003 PARK UNIT FACILITY SURVEY:

Individual Park Name

The Planning Division is collecting this information for our annual DPR Statistical Report. The Report will be available when completed on the Planning Division Website at www.parks.ca.gov and through contacting the Planning Division at (916) 653-9901.

INSTRUCTIONS: Please make any updates necessary to the numbers reported on the last 2001-02 survey. Where there are no changes needed, simply leave the 2002-03 Survey Responses boxes empty. Thank you very much for your time.

Please return the completed surveys by **Friday, July 18, 2003.**

Please use figures current as of **June 30, 2003** Survey Completed By: Park Unit Representative Phone #: (800)555-5555

I. Overnight Use Facilities

A. Individual/Family Camp Sites

		2001-02 Survey Responses		2002-03 Survey Responses	
		Number of Sites	Visitor Capacity: # of people	Number of Sites	Visitor Capacity: # of people
1	Primitive/undeveloped: up to 8 people and two vehicles; tent space, stove, table and nearby piped water, chemical or vault toilet	0	0		
2	Developed: up to 8 people and two vehicles; tent space, stove, table and nearby piped water, and restroom with flush toilets and hot water; maybe showers and laundry sinks	0	0		
3	RV Hookup: up to 8 people and two vehicles; paved spur for RV, stove, table and restroom with flush toilets and hot water; each site with electricity and water; sewer connection on site or in unit	0	0		
4	Environmental/Trail Campsite: designated primitive site with tent space, table, fire ring or stove, pit toilet in relative undisturbed setting	0	0		
5	Hike-in or Bike Campsite: designated area with tent space, table, fire ring or stove, with water and toilet facilities nearby	0	0		
6	Floating Campsite: tent space, table, stove and toilet facilities located on a floating platform, accessible only by private boat	0	0		
7	Dock Berths or Off-shore Mooring Buoys: number of boats that can be accommodated; the vessels can be self-contained or the overnight usage may be on a site on the shore	0	0		

B. Group Camp Sites

		2001-02 Survey Responses		2002-03 Survey Responses	
		Number of Sites	Visitor Capacity: # of people	Number of Sites	Visitor Capacity: # of people
8	Tent or RV use - primitive or developed: an area with space for many tents or RVs, providing tables, stoves or fire rings, access to water and toilet facilities; often used by reservation only	0	0		
9	Horse Camps - primitive or developed: a group area reserved only or mainly for the use of horse groups, providing facilities needed for the management of the horses; often used by reservation only	0	0		

C. Overflow Camping Areas

		2001-02 Survey Responses		2002-03 Survey Responses	
		Number of Sites	Visitor Capacity: # of people	Number of Sites	Visitor Capacity: # of people
10	Enroute/Wayside Camping: overnight self-contained RV occupancy of day use or other paved areas, limited and specified sites, single-night only; day use tables and sanitation facilities available	0	0		
11	Open, Casual Areas: unmarked portions of fields, dirt or gravel areas where tents and RVs may be used without time limit; support facilities may be limited	0	0		

D. Overnight (non-camping) Facilities - Structures

		2001-02 Survey Responses		2002-03 Survey Responses	
		Number of Sites	Visitor Capacity: # of people	Number of Sites	Visitor Capacity: # of people
12	Tent Cabins/Shelters: semi-permanent tent on raised wood platform or three-sided shelter with roof, supporting table, cooking and restroom facilities	0	0		
13	Rustic Cabins: enclosed building with appropriate facilities, some of which (restrooms) may be located outside of the building	0	0		
14	Yurts: shelter with appropriate facilities, some of which (restrooms) may be located outside the structure	0	0		
15	Bark Houses: Native American type shelter with appropriate facilities, some of which (restrooms) may be located outside the structure	0	0		
16	Modern Lodge/Motel/Detached Cabins: with rooms, usually for two occupants, with heating, electricity, hot and cold running water, restrooms	0	0		

II. Picnic Facilities

		2001-02 Survey Responses		2002-03 Survey Responses	
		Number of Sites	Visitor Capacity: # of people	Number of Sites	Visitor Capacity: # of people
17	Family Picnic Sites: a small area with a table, stove or fire rings, with nearby parking, water and restrooms (sometimes used by groups but intended for individuals, families or fewer)	0	0		
18	Group Picnic Sites: a larger area with a number of tables, stoves or fire rings, with nearby parking, water and restroom facilities, often arranged for group use and often used by reservation only	0	0		

III. Non-Motorized Trails (on DPR lands only)

(Only include those trails established and maintained by DPR.)

		2001-02 Survey Responses		2002-03 Survey Responses	
		Number of Trails	Total Miles of Trail	Number of Trails	Total Miles of Trail
19	Maximum-use Trails: pathways/trails for all three user types: foot, horse and bicycle	0	0.0		
20	Limited-use Trails: pathways/trails where only one or two users are allowed, with the others prohibited	0	0.0		
21	Roadways/Service or Fire Roads: unimproved (dirt, gravel) service and fire roads which are designated as trails or used as trails by any or all of the three user types	0	0.0		

Notes & Clarifications: (Please note the question(s) you are referring to)

Please fold in half, staple, and mail using the route slip on the reverse.

STATE PARK SYSTEM: 2002-2003 FACILITY SURVEY SUMMARY

I. Overnight Use Facilities

A. Individual/Family Camp Sites

		2002-03 Survey Responses	
		Number of Sites	Visitor Capacity: # of people
1	<u>Primitive/undeveloped:</u> accommodates up to 8 people and two vehicles with a tent space, stove, table and nearby piped water and a chemical or vault toilet	3,639	28,889
2	<u>Developed:</u> accommodates up to 8 people and two vehicles with a tent space, stove, table, nearby piped water and a restroom with flush toilets and hot water; may include showers and laundry sinks	8,165	65,594
3	<u>RV Hookup:</u> accommodates up to 8 people and two vehicles with a paved spur for RV, stove, table and restroom with flush toilets and hot water; each site with electricity and water; sewer connection on site or in unit	1,101	8,188
4	<u>Environmental/Trail Campsite:</u> designated primitive site with a tent space, table, fire ring or stove and a pit toilet in a relatively undisturbed setting	376	2,589
5	<u>Hike-in or Bike Campsite:</u> designated area with a tent space, table, fire ring or stove, with water and toilet facilities nearby	245	1,869
6	<u>Floating Campsite:</u> tent space, table, stove and toilet facilities located on a floating platform, accessible only by boat	10	150
7	<u>Dock Berths or Off-shore Mooring Buoys:</u> number of boats that can be accommodated; the vessels can be self-contained or the overnight usage may be on a site on-shore	1,287	4,724
		14,823	112,003

B. Group Camp Sites

		2002-03 Survey Responses	
		Number of Sites	Visitor Capacity: # of people
8	<u>Tent or RV use - primitive or developed:</u> an area with space for many tents or RVs, providing tables, stoves or fire rings, access to water and toilet facilities; often used by reservation only	159	9,024
9	<u>Horse Camps - primitive or developed:</u> a group area reserved only or mainly for the use of horse groups, providing facilities needed for managing the horses; often used by reservation only	71	1,398
		230	10,422

C. Overflow Camping Areas

		2002-03 Survey Responses	
		Number of Sites	Visitor Capacity: # of people
10	<u>Enroute/Wayside Camping:</u> overnight, self-contained RV occupancy of day-use or other paved areas, limited and specified sites, single-night only; day-use tables and sanitation facilities available	505	4,242
11	<u>Open, Casual Areas:</u> unmarked portions of open fields, dirt or gravel areas where tents and RVs may be used sometimes; support facilities may be limited	40,608	326,461
		41,113	330,703

STATE PARK SYSTEM: 2002-2003 FACILITY SURVEY SUMMARY

Continued

		2002-03 Survey Responses	
D. Overnight (non-camping) Facilities - Structures		Number of Sites	Visitor Capacity: # of people
12	Tent Cabins/Shelters: semi-permanent tent on raised wood platform or three-sided shelter with roof, with a supporting table, cooking and restroom facilities	58	376
13	Rustic Cabins: enclosed building with appropriate facilities, some of which (restrooms) may be located outside of the building	107	503
14	Yurts: shelter with appropriate facilities, some of which (restrooms) may be located outside the structure	0	0
15	Bark Houses: Native American-type shelter with appropriate facilities, some of which (restrooms) may be located outside the structure	6	45
16	Modern Lodge/Motel/Detached Cabins: with rooms, usually for two occupants, with heating, electricity, hot and cold running water and restrooms; may be operated by concessionaires	419	1,472
		590	2,396

II. Picnic Facilities

		2002-03 Survey Responses	
		Number of Sites	Visitor Capacity: # of people
17	Family Picnic Sites: a small area with a table, stove or fire rings, with nearby parking, water and restrooms (sometimes used by groups but intended for individuals or families)	6,553	60,997
18	Group Picnic Sites: a large area with a number of tables, stoves or fire rings, with nearby parking, water and restroom facilities, often arranged for group use and often used by reservation only	203	15,429
		6,756	76,426

III. Non-Motorized Trails (on DPR lands only)

		2002-03 Survey Responses	
		Number of Trails	Total Miles of Trail
19	Maximum-use Trails: pathways/trails for all three non-motorized user types: foot, horse and bicycle	323	732.4
20	Limited-use Trails: pathways/trails where only one or two user types are allowed and the other(s) prohibited	1,057	1,431.6
21	Roadways and Firebreaks: unimproved (dirt, gravel) roads and firebreaks which are designated as trails or used as trails by any or all of the three user types	584	1,595.7
		1,964	3,759.7

This page intentionally left blank.

APPENDIX C - INTERNAL UNITS, MINOR SYSTEM PROPERTIES

1. Internal Units

As indicated in Chapter 2, during the 2002/03 fiscal year, the State Park System consists of 252 classified units and 21 major unclassified properties, for a total of 273 units and properties. Not included in these figures are three kinds of classified units, Cultural Preserves, Natural Preserves and State Wildernesses. These units, informally termed “internal units”, are portions of or lands internal to one of the System’s basic 252 classified units. The purpose of creating such units is to provide a higher level of protection to the resources than would be required by the classification of the “parent unit”, the unit in which it is located.

Internal classified units are not listed in the table in Chapter 3, above. They appear in List 3 of each annual edition of the Department’s *Planning Milestones* publication.

There were 82 internal units in the State Park System on July 1, 2002. Since internal units are operated as an integral part of the parent unit in which they are located, there is little data available which applies to internal units alone, other than for their classification date, county of location and acreage. There is no information available for internal units in other data categories such as public use facilities, visitor attendance, operating costs, staffing, and the like. Any information of this type which is relevant to an internal unit would be included as part of that type of information which is relevant to the parent unit as a whole.

Table C-1, following, provides the available data for internal units.

2. Minor System Properties

In addition to the State Park System’s 273 classified units and major unclassified properties, there are a handful of minor, usually very small properties, which is arranged by the System. Not being part of the standard System, they are not listed in the table in Chapter 3, above. They are usually managed by the headquarters office of the System district in which they are located.

Table C-2, below, provides the basic information on these properties.

This page intentionally left blank.

Table C-1

State Park System - Internal Units

June 30, 2002

SUBUNIT	UNIT NUMBER	PARENT UNIT	DATE CLASSIFIED	COUNTY	ACRES OWNED
Ah-Ha-Kwe-Ah-Mac/ Stonewall Mine CP	909	Cuyamaca Rancho SP	Mar 1983	SD	430.00
Anderson Island NP	397	Folsom Lake SRA	Sep 1974	ED,PLA,SAC	10.00
Anderson Marsh NP	926	Anderson Marsh SHP	Jun 1985	LAK	540.00
Antone Meadows NP	365	Burton Creek SP	Jul 1978	PLA	160.00
Anza-Borrego Desert SW	624	Anza-Borrego Desert SP	Mar 1981	IMP,RIV,SD	297,400.00
Arena Rock Marine NP	930	Manchester SP	Jul 1987	MEN	500.00
Barrel Springs CP	913	Ocotillo Wells SVRA	Mar 1983	IMP,SD	1.00
Big Lagoon Forest, East NP	914	Harry A. Merlo SRA	Jun 1983	HUM	80.00
Big Lagoon Forest, South NP	916	Harry A. Merlo SRA	Jun 1983	HUM	62.00
Big Lagoon Forest, West NP	915	Harry A. Merlo SRA	Jun 1983	HUM	51.00
Boney Mountain SW	910	Point Mugu SP	Oct 1981	VEN	6,190.00
Brush Creek/Lagoon Lake Wetlands and Coastal Dunes NP	947	Manchester SP	Dec 1992	MEN	650.00
Bull Creek SW	957	Humboldt Redwoods SP	Nov 2001	HUM	10,450.00
Burton Creek NP	364	Burton Creek SP	Jul 1978	PLA	170.00
Calaveras South Grove NP	305	Calaveras Big Trees SP	Nov 1984	CAL,TUO	1,260.00
Carl "A" Anderson Redwoods NP	956	Humboldt Redwoods SP	Nov 2001	HUM	3,520.00

State Park System - Internal Units

June 30, 2002

SUBUNIT	UNIT NUMBER	PARENT UNIT	DATE CLASSIFIED	COUNTY	ACRES OWNED
Cuyamaca Meadow NP	943	Cuyamaca Rancho SP	Nov 1990	SD	950.00
Cuyamaca Mountain SW	906	Cuyamaca Rancho SP	Apr 1982	SD	13,210.00
Doane Valley NP	675	Palomar Mountain SP	Oct 1974	SD	450.00
Edwin L. Z'berg NP	342	Sugar Pine Point SP	Feb 1977	ED	160.00
Ellen Browning Scripps NP	633	Torrey Pines SR	Feb 1970	SD	72.00
Freeman Canyon CP	920	Hungry Valley SVRA	Aug 1983	LA, VEN	200.00
Gorman CP	919	Hungry Valley SVRA	Aug 1983	LA, VEN	160.00
Hagen Canyon NP	583	Red Rock Canyon SP	Jul 1974	KER	1,145.00
Henry W. Coe SW	925	Henry W. Coe SP	May 1985	SCL, STA	20,200.00
Heron Rookery NP	471	Morrow Bay SP	Apr 1975	SLO	6.00
Hidden Divide NP	960	Mount San Jacinto SP	Oct. 2002	RIV	255.00
Hungry Valley Oak Woodland NP	917	Hungry Valley SVRA	Aug 1983	LA, VEN	60.00
Inglenook Fen-Ten Mile Dunes NP	949	MacKerricher SP	Jun 1995	MEN	1,285.00
Kaslow NP	903	Malibu Creek SP	Oct 1981	LA	1,920.00
Kechaye CP	904	Millerton Lake SRA	Jun 1981	FRE, MAD	200.00
Kumeyaay Soapstone CP	912	Cuyamaca Rancho SP	Mar 1983	SD	136.00
La Jolla Valley NP	571	Point Mugu SP	May 1972	VEN	600.00
Los Penasquitos Marsh NP	640	Torrey Pines SR	Feb 1970	SD	218.00
Marina Dunes NP	932	Marina SB	Aug 1987	MON	111.00
Mitchell Caverns NP	631	Providence Mountains SRA	Sep 1963	SBD	628.00

State Park System - Internal Units

June 30, 2002

SUBUNIT	UNIT NUMBER	PARENT UNIT	DATE CLASSIFIED	COUNTY	ACRES OWNED
Monarch Butterfly NP	924	Natural Bridges SB	May 1984	SCR	16.00
Moore Creek Wetland NP	937	Natural Bridges SB	Oct 1988	SCR	14.00
Mormon Island Wetlands NP	946	Folsom Lake SRA	Jun 1992	ED,PLA,SAC	110.00
Morro Dunes NP	936	Montana de Oro SP	Jun 1988	SLO	900.00
Morro Estuary NP	445	Morro Bay SP	Jun 1988	SLO	420.00
Morro Rock NP	445	Morro Bay SP	Sep 1969	SLO	45.00
Mount San Jacinto SW	619	Mount San Jacinto SP	Jan 1974	RIV	12,465.00
Murrelet SW	954	Prairie Creek Redwoods SP	Nov 1999	DN,HUM	6,600.00
Nicholas Flat NP	951	Leo Carrillo SP	Oct 1996	LA,VEN	600.00
Ohlone Coastal CP	929	Carmel River SB	Jun 1987	MON	25.00
Pa-nu CP	942	San Simeon SP	Oct 1990	SLO	13.70
Pajaro River Mouth NP	934	Zmudowski SB	Aug 1987	MON	73.00
Pescadero Marsh NP	283	Pescadero SB	Nov 1974	SM	235.00
Pilcha (West Mesa) CP	910	Cuyamaca Rancho SP	May 1983	SD	1,400.00
Redwood Heritage SW	955	Jedediah Smith Redwoods SP	Nov 1999	DN	5,500.00
Salinas River Dunes NP	931	Salinas River SB	Aug 1987	MON	105.00
Salinas River Mouth NP	933	Salinas River SB	Aug 1987	MON	72.00
San Lorenzo Headwaters NP	953	Castle Rock SP	Mar 2000	SCL,SCR,SM	365.00
San Mateo Creek Wetlands NP	922	San Onofre SB	Apr 1984	SD	37.00
San Simeon NP	941	San Simeon SP	Oct 1990	SLO	365.00

State Park System - Internal Units

June 30, 2002

SUBUNIT	UNIT NUMBER	PARENT UNIT	DATE CLASSIFIED	COUNTY	ACRES OWNED
Santa Clara Estuary NP	568	McGrath SB	Jul 1979	VEN	160.00
Santa Rosa Creek NP	940	San Simeon SP	Oct 1990	SLO	40.00
Santa Rosa Mountains SW	627	Anza-Borrego Desert SP	Feb 1974	IMP,RIV,SD	87,000.00
Silver Strand NP	921	Silver Strand SB	Nov 1983	SD	26.00
Southampton Bay Wetland NP	944	Benicia SRA	Jun 1991	SOL	210.00
Sunset Wetlands NP	939	Sunset SB	May 1990	SCR	40.00
Tataviam CP	918	Hungry Valley SVRA	Aug 1983	LA,VEN	450.00
Theodore J. Hoover NP	905	Big Basin Redwoods SP	Jan 1982	SCR,SM	23.00
Tijuana Estuary NP	928	Border Field SP	Jan 1987	SD	327.00
Trestles Wetlands NP	953	San Onofre SB	Apr 1984	SD	82.00
West Waddell Creek SW	908	Big Basin Redwoods SP	Nov 1982	SCR,SM	5,810.00
Wilder Beach NP	466	Wilder Ranch SP	May 1980	SCR	67.00
Wilder Dairy CP	464	Wilder Ranch SP	May 1980	SCR	20.00
Woodson Bridge NP	122	Woodson Bridge SRA	Sep 1974	TEH	260.00

Table C-2

Minor System Properties

Property Name	Unit Number	County	Acres Owned
Alamitos SB	565	Orange County	.90
Big Rock Beach	510	Los Angeles County	.43
Drum Barracks	576	Los Angeles County	.43
Manhattan SB	546	Los Angeles County	5.37
Monterey District HQ	200	Monterey County	5.81
Pan Pacific Park	501	Los Angeles County	28.26
San Diego Coast Office Building, Carlsbad (*)	---	San Diego County	.31
San Mateo County Trails Project	478	San Mateo County (leased – in addition)	2.26 (.05)
Seccombe Lake SURA	598	San Bernardo County	.57
Stillwater Cove	210	Sonoma County	36.27

These properties appear in Lists 5 and 6 of the July 1, 2003 edition of the publication *Planning Milestones for the Park Units and Major Properties Associated with the California State Park System*. Additional information on the nature and status of these properties may be found in that publication.

(*) Office of former La Costa District, 2860 Carlsbad Boulevard, Carlsbad: granted by the Division of Forestry, recorded 2/15/73, gift value of \$250.

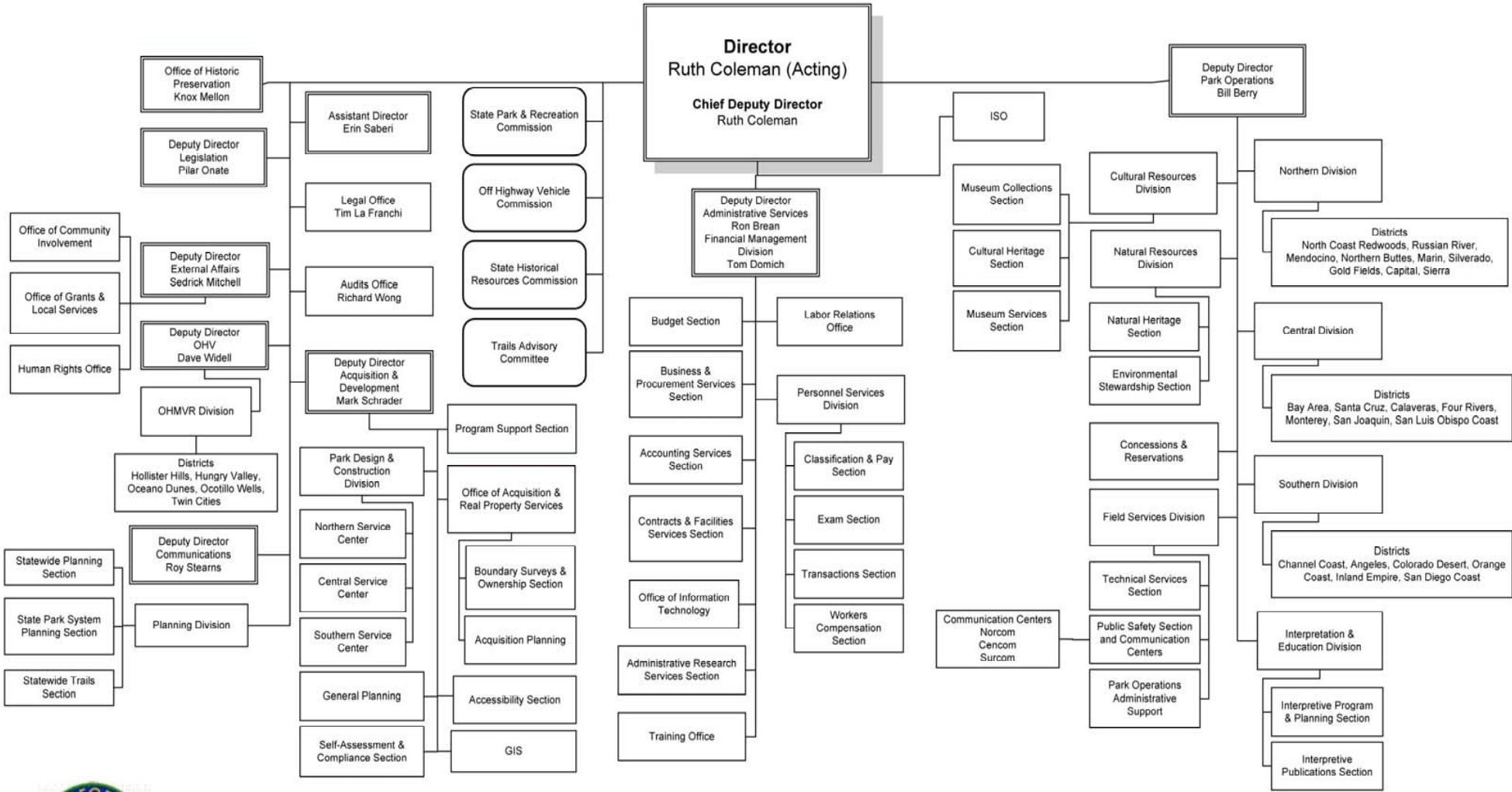
This page intentionally left blank.

APPENDIX D - DEPARTMENT ORGANIZATION CHART

The following page shows an organization chart for the Department of Parks and Recreation that was current as of June 30, 2003. This is the only available chart that is official (signed by the Director) and that is specific to any date during the 2002/03 fiscal year.

This page intentionally left blank.

California Department of Parks and Recreation Organizational Structure



87



June 30, 2003

Ruth Coleman, Acting Director

Date

This page intentionally left blank.

APPENDIX E - OTHER SOURCES OF PARK SYSTEM DATA

Chapter 5 identified departmental sources that continually generate data and information about many of the field activities and operations that take place in the State Park System. In addition, there exist other sources – libraries, depositories and archives – which house collections of published materials which may contain relevant information. These sources emphasize past, historic data. The most important ones are listed below.

A. California Department of Parks and Recreation

Archives - The Department's Archives collects, organizes, preserves, and makes accessible documents with long-term or permanent value. A variety of Department's statistical reports, resource surveys, planning studies, interpretive reports, acquisition files, leases and deeds are located in the Archives, which also houses the Department's Cultural Heritage Library. This library contains a wide variety of books and other publications, of both a scholarly and general nature, published by sources outside of the Department.

- Contact: Victoria Yturralde, Archivist II, Cultural Resources Division, (916) 651-6959; vytur@parks.ca.gov.

Central Records Office - This office is responsible for the systematic control of the creation, maintenance, use, and disposition of all departmental records relevant to the Department's decision-making and activities. Records include documentary materials, books, electronic data, maps, moving images, papers, photographs, sound recordings, made or received by the Department in the transaction of public business. This activity is in response to the State Records Management Act.

- Diane Voll, Associate Government Program Analyst, Central Records Office, Administrative Services Division, (916) 324-9852; dvoll@parks.ca.gov

Internal Departmental "Libraries" - Certain of the Department's organizational components house reference libraries and collections containing materials of value to the performance of their function. Information on various aspects of the State Park System may be sought from these sources, which are located as follows:

- Cultural Resources Division
- Interpretation and Education Division
- Natural Resources Division
- Northern Service Center
- Planning Division

B. Other Sources

California State Library (Sacramento) - This library's Government Publications Section contains a vast collection of reports, surveys, special studies and yearbooks containing information on the full range of California's agencies, departments, bureaus and boards.

Contact: Reference Desk, Government Publications Section, California State Library, 914 Capitol Mall, MS E-29, P.O. Box 942837, Sacramento, CA 94237-0001; 916-654-0069; 916-653-6114 (fax); email: cslgps@library.ca.gov. Hours of operation: 9:30 AM-4 PM, Monday-Friday.

National Association of State Park Directors – Annual Information Exchange series. - Starting with fiscal year 1979, this organization has produced an annual statistical report which encompasses all of the nation's state park systems. Each lengthy report contains many data series, including acreage, facilities, attendance, and information on each system's fiscal and personnel matters. In some categories, this Department's definitions (and thus its data) must be altered to fit the needs of the NASPD publication.

- Contact: NASPD, 9894 East Holden Place, Tucson, AZ 85748; (520) 298-4924; <http://www.naspd.org>

PUBLICATION CREDITS

The following staff members contributed to the development and publication of the *California State Park System Statistical Report: 2002/03 Fiscal Year*.

Creation of the Basic Document and Map

- Philomene Smith, Associate Park and Recreation Specialist, Planning Division
- Barry Trute, Planning Division
- Bruce Kennedy, retired Senior Park and Recreation Specialist
- Philip Carey, Exhibit Designer/Coordinator, Capital District
- Krysten Laine, GIS Analyst, Northern Service Center

Providers of Data, Information and Other Valuable Assistance

- Val Bradshaw, Maintenance Chief III, Technical Services Section, Field Services Division
- Rebecca Brown, Budget Officer, Budget Section, Administrative Services Division
- Linda Canar, Program Manager, Accessibility Section, Acquisition and Development Division
- John Foster, Senior State Archaeologist, Cultural Resources Division
- Wendy Franklin, Museum Curator, Cultural Resources Division
- Jim Luscutoff, Reservations Manager, Field Services Division
- Victor Maris, Manager of Visitor Services, Field Services Division
- Donna Pozzi, Chief, Interpretation and Education Division
- Dave Schaub, Supervisor, Natural Heritage Section
- Randy Sederquist, State Park Superintendent II, Field Services Division
- Kim Snyder, Real Property Manager, Office of Acquisition and Real Property Services
- Mary Veliquette, Facilities Support Division
- Diane Voll, Associate Governmental Program Analyst, Central Records Office
- Jessica Casaday, Student Assistant, Planning Division
- Adrienne Tillis, Division Webmaster, Planning Division

Contributions From Individuals Outside of the Department:

- Janet Coles – California State Library
- Jim Maddox – retired from Department - back cover drawing
- Dale Wilson – retired from Department - historic postmarks

NOTES



California State Park System

Fiscal Year 02/ 03

Information Current As Of June 30, 2003



KEY TO ABBREVIATIONS

- CP Cultural Preserve
- NP Natural Preserve
- SB State Beach
- SHM State Historical Monument
- SHP State Historic Park
- SP State Park
- SR State Reserve
- SRA State Recreation Area
- SS State Seashore
- SVRA State Vehicular Recreation Area
- SW State Wilderness
- WC Wayside Campground

40 20 0 40 Miles

1 inch equals 28 miles
1 inch equals 44 kilometers



As of July 1, 2002, and during the entire 2002/03 fiscal year, the California State Park System consists of 252 classified units and 21 major unclassified properties, a total of 273 areas. These areas are shown on this map, printed in black:

State Beach	64	State Reserve	17
State Historical Monument	1	State Seashore	1
State Historic Park	47	State Vehicular Recreation Area	6
State Park	83	Wayside Campground	1
State Recreation Area	31	Major unclassified property	21

Three other types of classified units, created for special resource management purposes, may be established internal to any of the types of classified units noted above. As of July 1, 2002, there were 52 such units. They are shown on this map, their names printed in green and listed under the units in which they are located:

Cultural Preserve	13
Natural Preserve	59
State Wilderness	10

At the end of the 2002/03 fiscal year, June 30, 2003, the units and properties of the California State Park System were operated in 27 groups designated as districts. Of this group, five were Off Highway Motor Vehicle Recreation districts, which managed the system's State Vehicular Recreation Areas. The boundaries or locations of all these districts, as they existed on June 30, 2003, are shown on this map.

This map accompanies the report, *California State Park System Statistical Report - 2002/03 Fiscal Year*, California State Parks, Planning Division, Sacramento, California.

The park units' parcel boundaries are approximate and should not be considered legal descriptions. Maps are intended for study purposes only.