



Refugio State Beach

10 Refugio Beach Road • Goleta, CA 93117
(805) 968-1033

Refugio State Beach offers excellent coastal fishing as well as trails and picnic sites. Palm trees planted near Refugio Creek give a distinctive look to the beach and camping area.

PARK FEES are due and payable upon entry into the park. Use the self-registration system if the entrance station is closed. The campsite fee covers one vehicle. There are additional fees for extra vehicles.

OCCUPANCY: Eight people maximum are allowed per campsite (including children).

VEHICLE PARKING: Vehicles may only be parked in your assigned campsite. They must remain on the pavement and must not extend into the roadway beyond the campsite number or limit line. Three vehicles maximum are allowed per campsite. Trailers must be backed into the campsite parking space. Motor homes may be pulled forward or backed in.

CHECK-OUT TIME is noon. Please vacate your site by that time. Check-in time is 2 p.m.

RE-REGISTRATION: Campers without reservations who wish to re-register for another night must contact the entrance station before 9 a.m. on the morning they are due out. Site availability is not assured.

SPEED LIMIT: The maximum speed limit is 15 mph. When pedestrians, bicyclists, and children are present, even 15 mph might be too fast. Use good judgment.

BICYCLES are allowed on roadways only. Visitors under 18 must wear a safety helmet for bicycling, skateboarding, and scooter riding.

GENERATORS may only be operated between the hours of 10 a.m. and 8 p.m.

QUIET HOURS are from 10 p.m. to 6 a.m. To ensure an enjoyable experience for everyone, please do not disturb other campers, regardless of the time of day or night.

DOGS must be kept on a leash no longer than six feet and under control at all times. They are not permitted in buildings or on the beach (except for service dogs). Dogs must be confined to a vehicle or tent at night. Please clean up after your pet.

FIRES AND FIREWOOD: Please be cautious when building fires. Fires are allowed only in established fire rings or camp stoves, and they are not permitted on the beach. Do not build ground fires outside the fire rings or leave campfires unattended. Do not gather firewood in the park—the nutrients must be allowed to recycle back into the ecosystem. You may purchase firewood from the camp hosts.



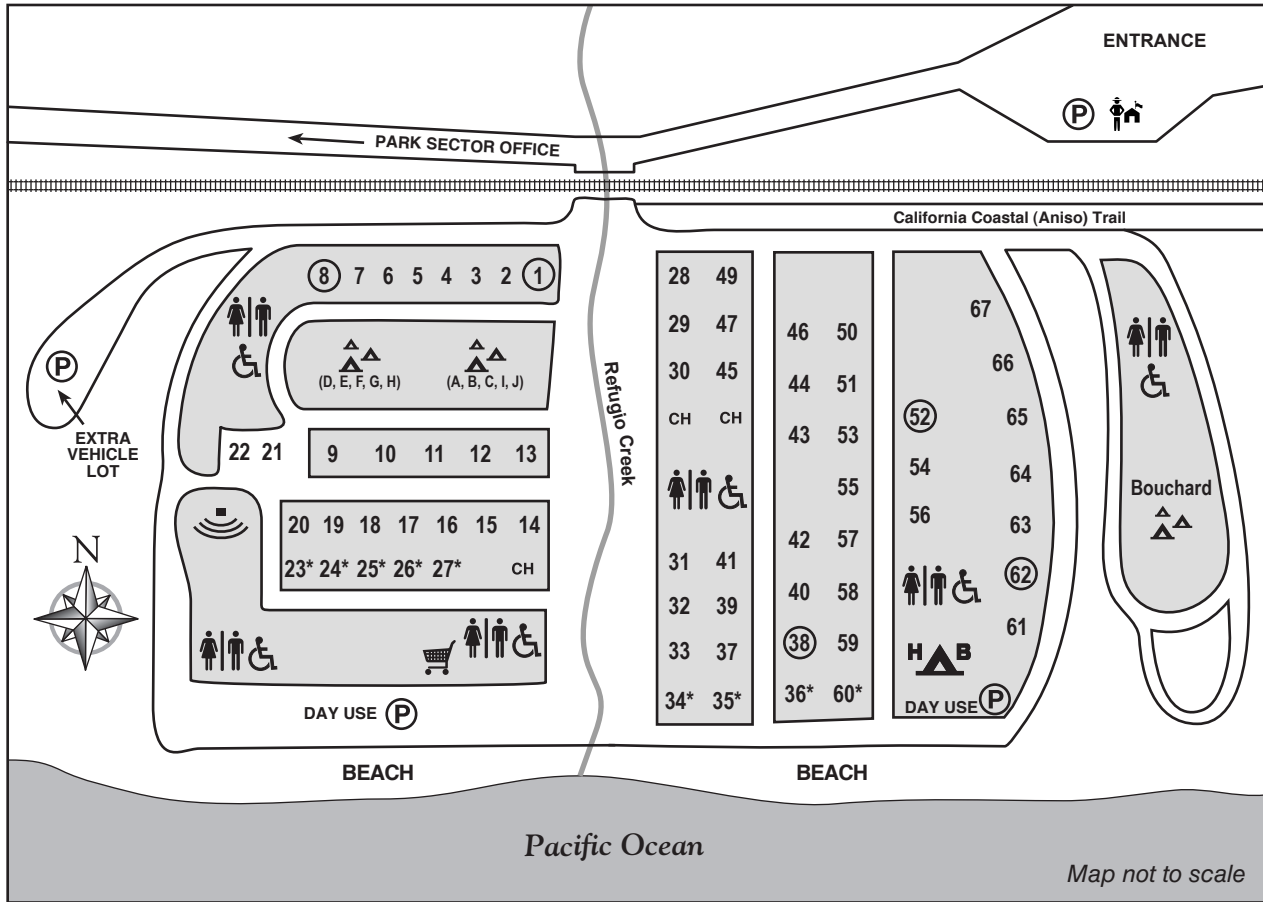
CAMPING RESERVATIONS: You may make camping reservations by calling (800) 444-7275 (TTY 800-274-7275).

To make online reservations, visit our website at www.parks.ca.gov.

ALTERNATE FORMAT: If you need this publication in an alternate format, contact interp@parks.ca.gov.



Refugio State Beach



Your Site # _____

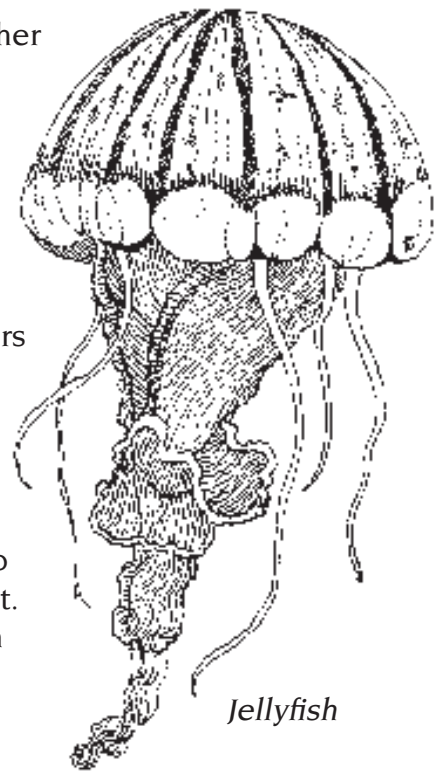
LEGEND

- Accessible Campsite
- Accessible Feature
- CH Camp Host Site
- Campfire Center
- Campsite: Hike & Bike
- Entrance Station
- Group Campground (A-J)
- Parking
- * Premium Campsite
- Restrooms
- Store

NOISE: Voices, radios, and other sound-producing devices must not be audible beyond your immediate campsite, regardless of the time of day or night.

ACTIVITIES that are disruptive to the other campers or the environment are strictly prohibited.

THEFT WARNING: Keep your vehicles locked and your valuables out of sight. Do not leave property out at night. Report suspicious activity to a ranger or camp host.



Jellyfish

For Emergencies, Dial **911.**