



Andrew Molera State Park

45500 Highway 1, Big Sur – (831) 667-1112

STORE FOOD to protect yourself and park wildlife. Lock food inside designated storage boxes. It is not secure in tents or ice chests. Promptly dispose of trash and food waste into the animal-proof campground trash cans to keep wildlife from consuming or spreading them around. Please recycle your plastic, glass, and aluminum.

WOOD GATHERING, including leaves and twigs, is not allowed. This material decays and assists the growth of live trees and other plants. Firewood is sold at the park entrance.

FIRES AND FIREWOOD. Fires are allowed only in provided steel fire rings. Do not build ground fires outside the fire rings or leave campfires unattended. Firewood is sold at the park entrance.

CAMPING VEHICLES must register at the park entrance and display a valid receipt on the windshield prior to parking. No vehicles are allowed in the campground. One (1) vehicle per site may park in the designated camper area of the parking lot. If additional parking is available, one (1) extra vehicle per site may register and pay the fees.

DOGS are not permitted on the trails, beach, or in the campground.

HAMMOCKS, CLOTHESLINES, SLACKLINES, etc. may not be attached to trees and plants in any fashion. All plants in the State Park are protected by law.

QUIET HOURS are from 10 p.m. to 6 a.m.; amplified music must be turned off and voices lowered to a whisper.

OCCUPANCY A maximum of four (4) people (including children) are allowed per campsite.

BICYCLES are allowed on designated fire roads. Riders under 18 must wear a helmet.

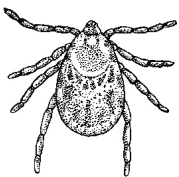
CHECK-OUT TIME is noon. Please pack up your site and remove all food and trash. Leave it as you found it.

FISHING is prohibited in the ocean. Steelhead trout in the Big Sur River may be caught and released from December to March subject to adequate water flows in the river. Check with the Department of Fish and Wildlife for regulations. Steelhead trout are threatened and need cool, flowing water. Please do not build dams or move rocks in the river.



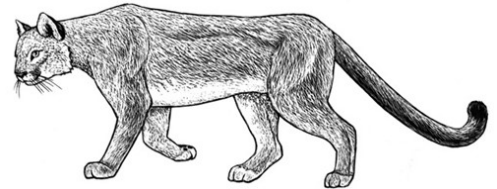
Poison Oak

Beware, grown in groups of three leaves, they are green until Fall when they turn shades of red.

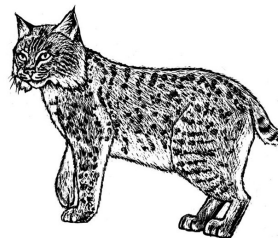


Ticks

Found in Big Sur. Check yourself and your children frequently.



Mountain Lion



Bobcat

CAMPING RESERVATIONS: You may make camping reservations by calling (800) 444-7275 (TTY 800-274-7275). To make online reservations, visit our website at www.parks.ca.gov.

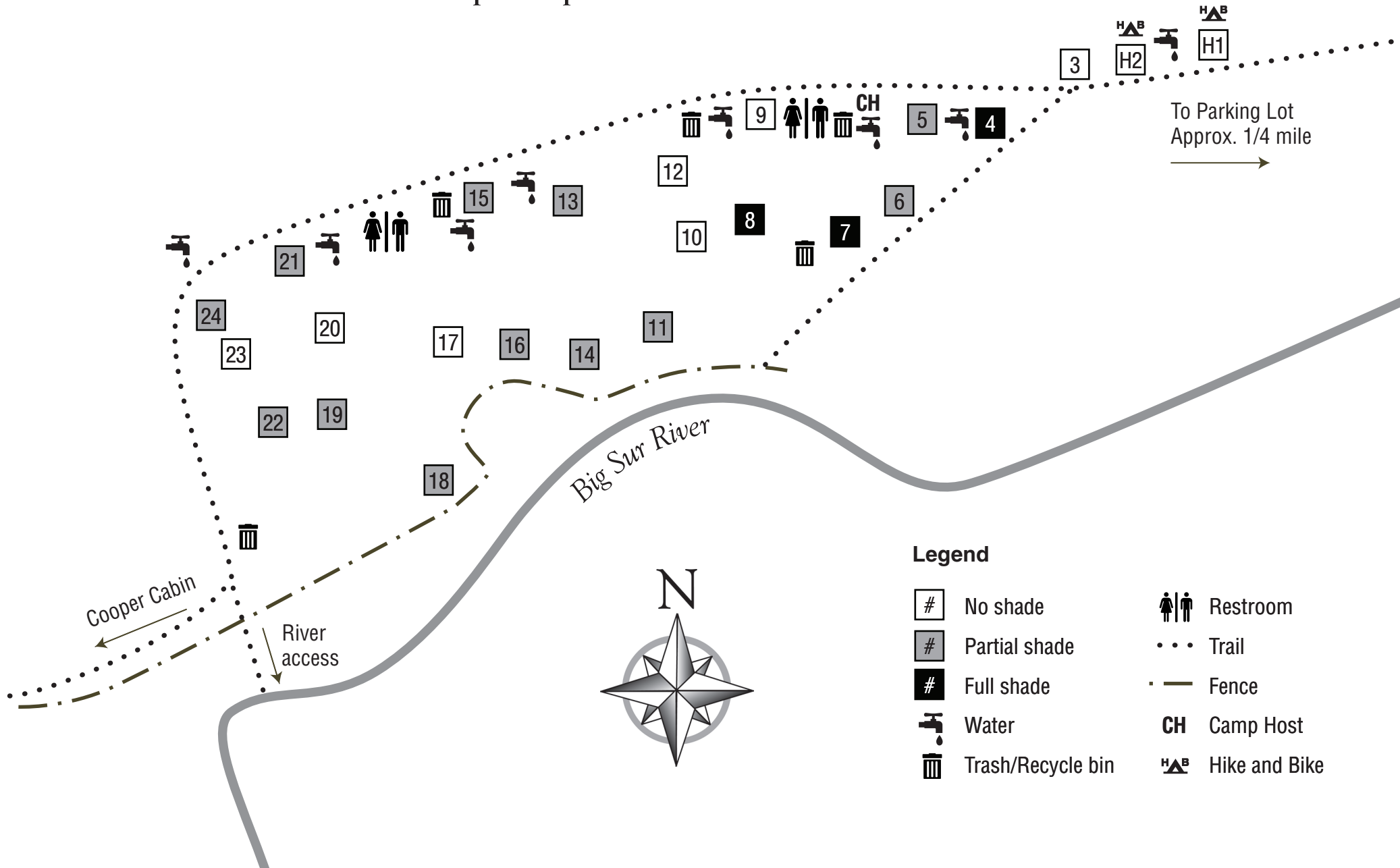
ALTERNATE FORMAT: If you need this publication in an alternate format, contact bigsurinterp@parks.ca.gov



Andrew Molera

State Park

Trail Camp Map



Legend

- | | | | |
|----|-------------------|-------|---------------|
| # | No shade | ♂ ♀ | Restroom |
| # | Partial shade | ⋯ | Trail |
| # | Full shade | - - - | Fence |
| ⚡ | Water | CH | Camp Host |
| ♻️ | Trash/Recycle bin | HAB | Hike and Bike |