

STATE OF CALIFORNIA  
DEPARTMENT OF PARKS AND RECREATION  
GOLD FIELDS DISTRICT  
**FOLSOM SECTOR**

**ORDER NO. 690 – 002 - 2015**

April 21, 2015

**THIS ORDER SUPERSEDES ORDER NO. 690-003-2013**

**Trail Use Policy**

Amended regulation Section 4360 and 4360(a) of Title 14, California Code of Regulations, "Trail Use" Unless designated by the Department, all trails are open to pedestrians and closed to all other uses. All allowable trail uses will continue as they are designated at the date of adoption of these regulations unless and until a change is made by order of the District Superintendent. The Department may establish speed limits for designated trail use for units or portions thereof. If established, these speed limits will be posted.

4360(a) Trails in Reserves and Preserves as defined in Public Resource Code Sections 5019.65, 5019.71 and 5019.74 may be designated for bicycle or equestrian use when the District Superintendent has determined that such use is important for public access to the area or to make important connections to other trails and where it has been determined that impacts to the resources for which the area was established will not be significant as defined in Public Resources Code Section 21068 and Section 15382, California Code of Regulations Title 14.

1. In accordance with the provisions of Section 4326 of Title 14, California Code of Regulations, the following locations are the only routes designated open to bicycles and/or equestrians on trails. All other trails or trail use shall adhere to the regulations established above in section 4360 and 4360(a) of Title 14, California Code of Regulations.

<b>Trail Name</b>	<b>Trail Segment Start</b>	<b>Trail Segment End</b>	<b>Ped estri an</b>	<b>Equ estri an</b>	<b>Bike</b>
South Lake Natoma Multi-use Trail (dirt trail)	Nimbus Flat	Powerhouse SHP Boundary	X	X	X
South Lake Natoma Bike Path (paved)	Nimbus Flat	Folsom Blvd Bridge	X	X	X

Parkshore Bike Path Connector Trail (paved)	Parkshore TH	South Lake Natoma Bike Path	X		X
American River Bike Path (Jedediah Smith Memorial Trail – paved)	Hazel Avenue	Beal's Point	X	X	X
Main Avenue Bike Path Connector Trail (paved)	Snowberry Trailhead @ Main Ave	American River Bike Path	X	X	X
Pioneer Express Trail – Lake Natoma Section	Lake Overlook	Negro Bar	X	X	
Middle Ridge Trail	Nimbus Dam	Sunset & Main	X	X	
Shady Trail	Middle Ridge Trail at west end Mississippi Bar	Snowberry Trailhead (Shadow Glen)	X	X	
Mississippi Bar Service Road	Sunset & Main	American River Bike Path	X	X	X
Snowberry Creek Trail	Snowberry TH (Shadow Glen)	Snipes Pershing Ravine	X	X	
Pioneer Express Trail – Olive Grove section	Negro Bar	Folsom Lake Bridge Undercrossing	X	X	
Pioneer Express Trail – Beal's Point to Dike 4	Beal's Point	Dike 4	X	X	
Service Road (from Beal's Point to Granite Bay - across Dikes 4, 5 & 6)	Beal's Point	Granite Bay Entrance	X	X	X
Dike 4-6 Multi-Use Trail	Beal's Point entrance road	Dike 4	X	X	X
Pioneer Express Trail – Granite Bay to ASRA	Granite Bay entrance	ASRA/FLSRA Boundary	X	X	
Granite Bay Multi-Use Trail – south section	Granite Bay entrance	Old County Road	X	X	X
Granite Bay Multi-Use Trail – north section	Old County Road	Beeks Bight	X	X	X
Center Trail	Old County Road	Beeks Bight	X	X	X
Dotons Point Multi-Use Trail	Beeks Bight	Dotons Point	X	X	X
Dotons Point Accessible Trail	Beeks Bight	Dotons Point	X		
Los Lagos Trail	Pioneer Express near Beeks	Auburn Folsom Road	X	X	

Darrington Trail	Peninsula Entrance Road	Salmon Falls	X		X
Oaks Nature Trail (accessible)	Peninsula	Peninsula	X		
South Fork American River Trail	Skunk Hollow	FLSRA Eastern Boundary	X		X
Sweetwater Trail	Salmon Falls Parking Lot	Sweetwater Creek	X	X	X
Monte Vista Trail North	Monte Vista/Falcon Crest	Browns Ravine Trail	X	X	
Monte Vista Trail South	Monte Vista/Falcon Crest	Browns Ravine Trail	X	X	
Browns Ravine Trail	Browns Ravine	Sweetwater Creek	X	X	
Mormon Island Cove to Browns Ravine Trail	Mormon Island Cove	Browns Ravine	X	X	X
Dike 8 to Mormon Island Cove (across MIAD)	Dike 8/Folsom Point	Mormon Island Cove	X	X	X
Mormon Island Wetlands Preserve Trail	Mormon Island Wetlands NP	Mormon Wetlands NP	X		
Powerhouse Canal Trail - Upper	Riley Street	Upstream along Powerhouse Canal to end of State Property	X	X	X
Powerhouse Canal Trail - Lower	Paved Trail on south side of Truss Bridge	Upstream along river to	X		
Leidesdorff Paved Trail (managed by City of Folsom)	Riley Street	Leidesdorff Street	X	X	X

All designated routes must be posted open by the use of a California State Parks approved and produced sign with a bicycle or equestrian symbol.

2. No person shall operate a bicycle in such a way as to endanger hikers, equestrians or others using State Park Property, or in such a way as to damage park resources. No person shall operate a bicycle within Folsom Sector of the Gold Fields District at a greater speed than is reasonable and prudent, nor in any event in excess of 15 miles per hour. No person shall operate a bicycle in excess of 5 miles per hour when passing hikers or equestrians or when approaching and negotiating a blind turn. Blind turn is

define as not being able to see oncoming traffic from a distance of 100 feet or less.

3. Non-motorized, operator propelled devices including, but not limited to, skateboard, tricycles, unicycles, roller blades may only be used on trails open to bicycle use.
4. Nothing herein shall affect any existing private, contractual, and residential or property rights.
5. Exceptions to this order may only be granted in writing by the Gold Fields District Superintendent, 7806 Folsom Auburn Road, Folsom, CA 95630.
6. Nothing herein shall be construed to be in derogation of other provisions of law.

Definitions

- Roads are paved and intended for motor vehicle traffic.
- Fire roads are unpaved and have limited or emergency motor vehicle use only.
- Trails are routes of six feet width or less and designed for foot traffic only, unless otherwise open by this order.

**So Ordered:**



---

**Richard Preston, Acting District Superintendent**

4/21/2015

**Date**

**DECLARATION OF POSTING**

District Superintendent's **Order Number 690-002-2015**

**Folsom Sector  
Trail Use**

Effective April 21, 2015

I hereby certify that on this date, in compliance with California Code of Regulation, Section 4301(i), *Posting*, copies of this order were posted at the Gold Fields District Office, the Northern Division Chief's Office Sacramento, California and at locations convenient to the public within Folsom Sector Units, Gold Fields District.

I declare under penalty of perjury that the foregoing is true and correct.

SIGNED:



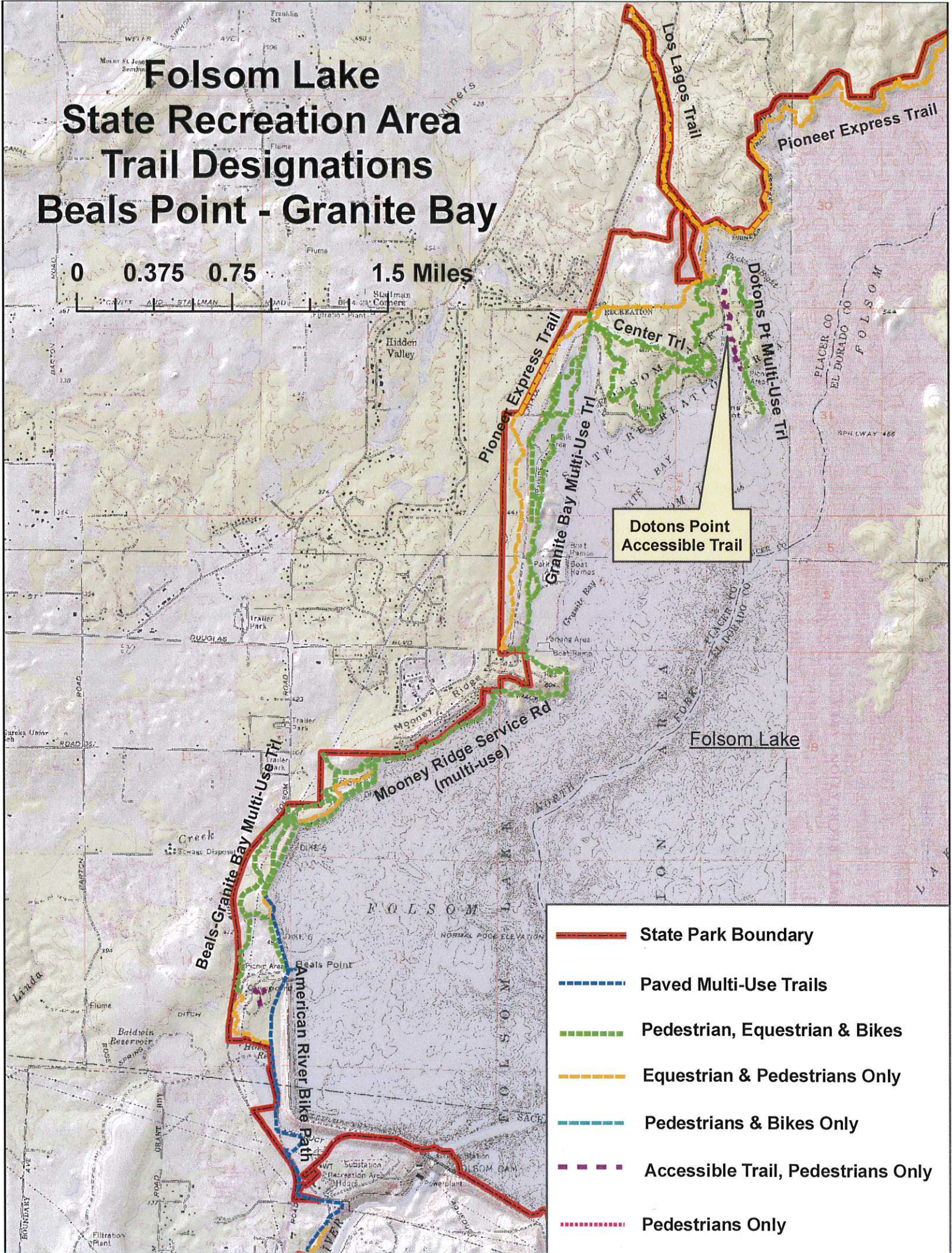
Richard Preston, Acting District Superintendent

4/21/2015








Date

# Folsom Lake State Recreation Area Trail Designations Beals Point - Granite Bay

0 0.375 0.75 1.5 Miles



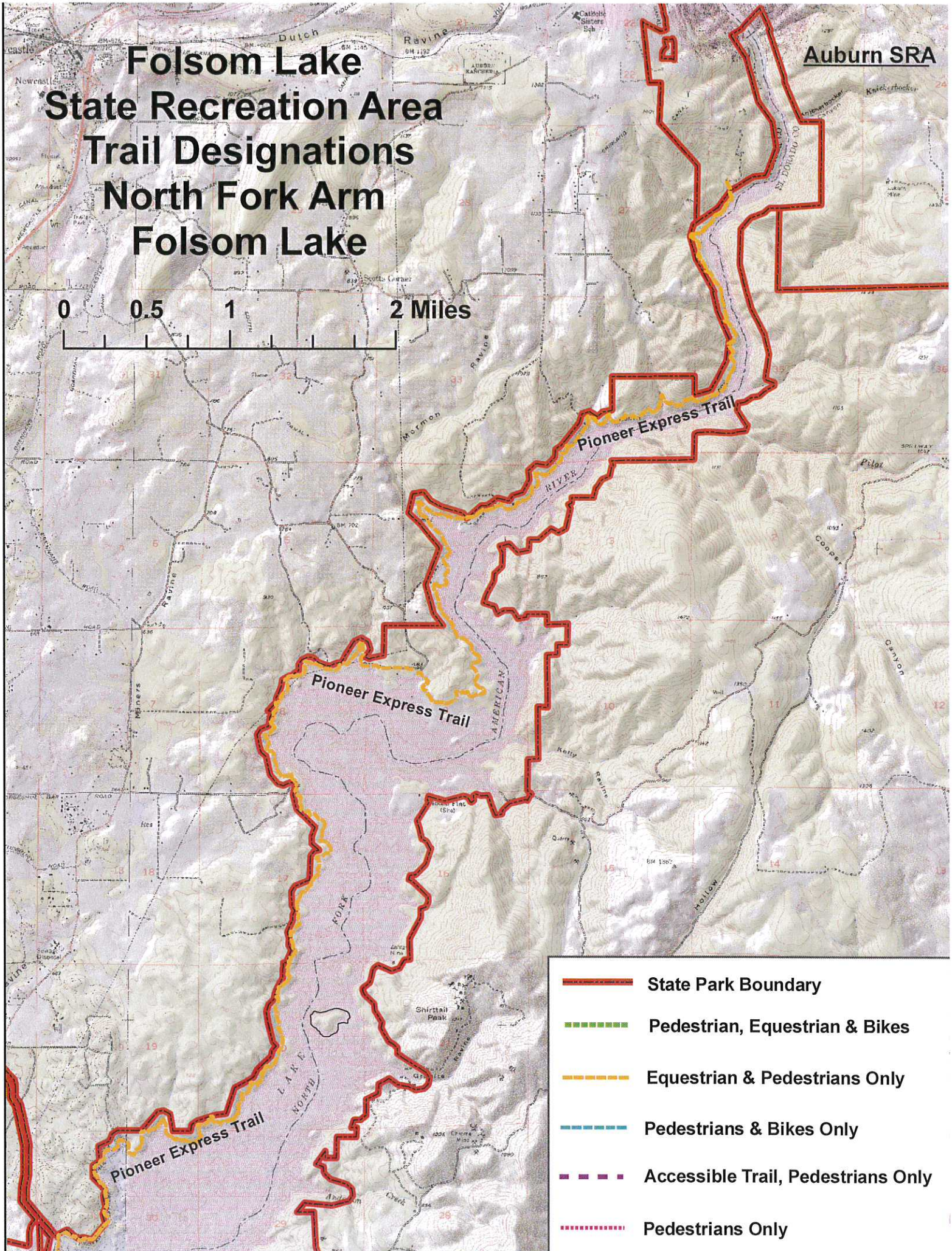
**Dotons Point  
Accessible Trail**



-  **State Park Boundary**
-  **Paved Multi-Use Trails**
-  **Pedestrian, Equestrian & Bikes**
-  **Equestrian & Pedestrians Only**
-  **Pedestrians & Bikes Only**
-  **Accessible Trail, Pedestrians Only**
-  **Pedestrians Only**

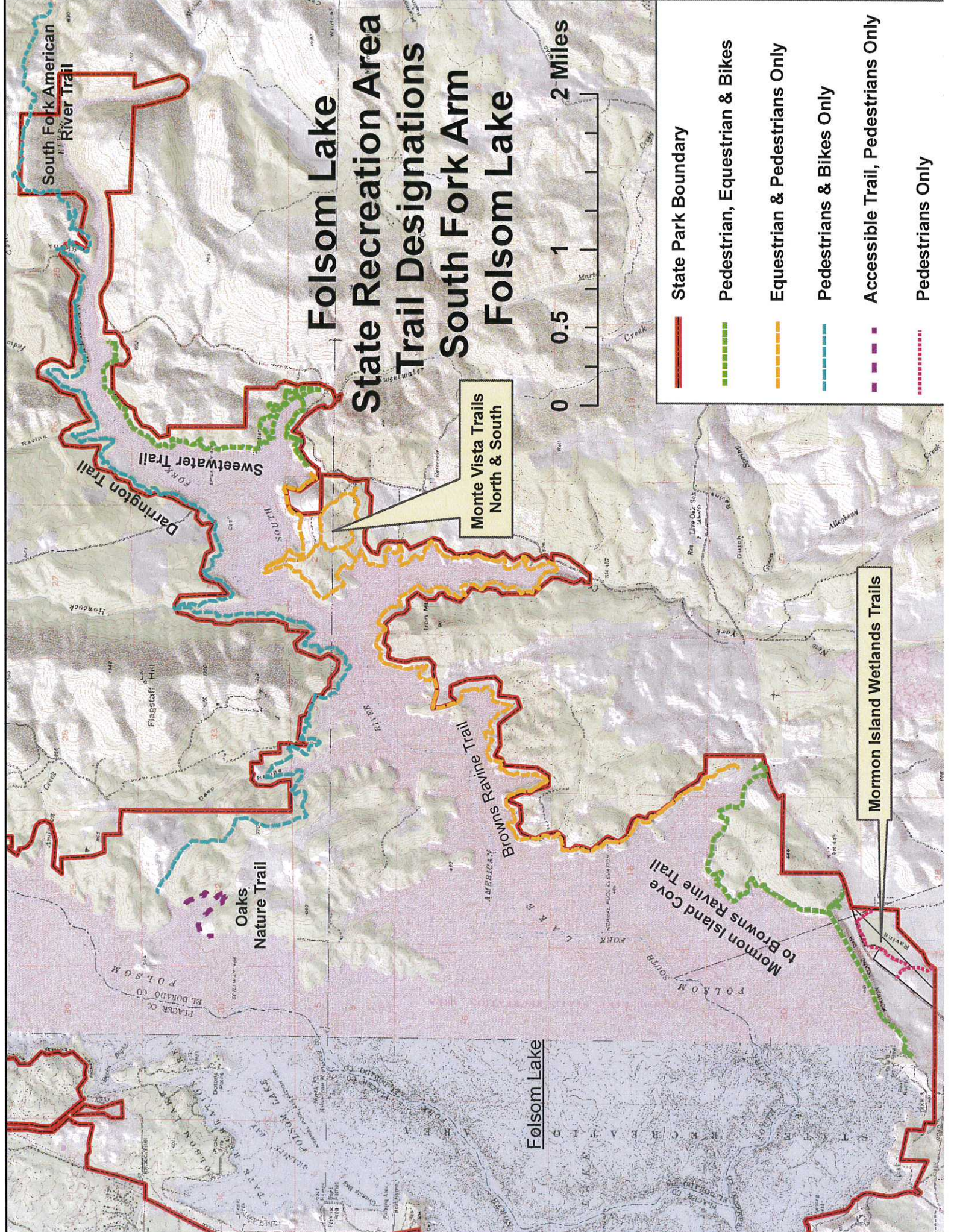
# Folsom Lake State Recreation Area Trail Designations North Fork Arm Folsom Lake

Auburn SRA

0 0.5 1 2 Miles



-  State Park Boundary
-  Pedestrian, Equestrian & Bikes
-  Equestrian & Pedestrians Only
-  Pedestrians & Bikes Only
-  Accessible Trail, Pedestrians Only
-  Pedestrians Only



# Folsom Lake State Recreation Area Trail Designations

## South Fork Arm Folsom Lake



- ▬ State Park Boundary
- ▬ Pedestrian, Equestrian & Bikes
- ▬ Equestrian & Pedestrians Only
- ▬ Pedestrians & Bikes Only
- ▬ Accessible Trail, Pedestrians Only
- ⋯ Pedestrians Only

Monte Vista Trails  
North & South

Mormon Island Wetlands Trails

Oaks  
Nature Trail

Folsom Lake

Mormon Island Cove  
Trail to Browns Ravine Trail

Browns Ravine Trail

Darrington Trail  
Sweetwater Trail

South Fork American  
River Trail

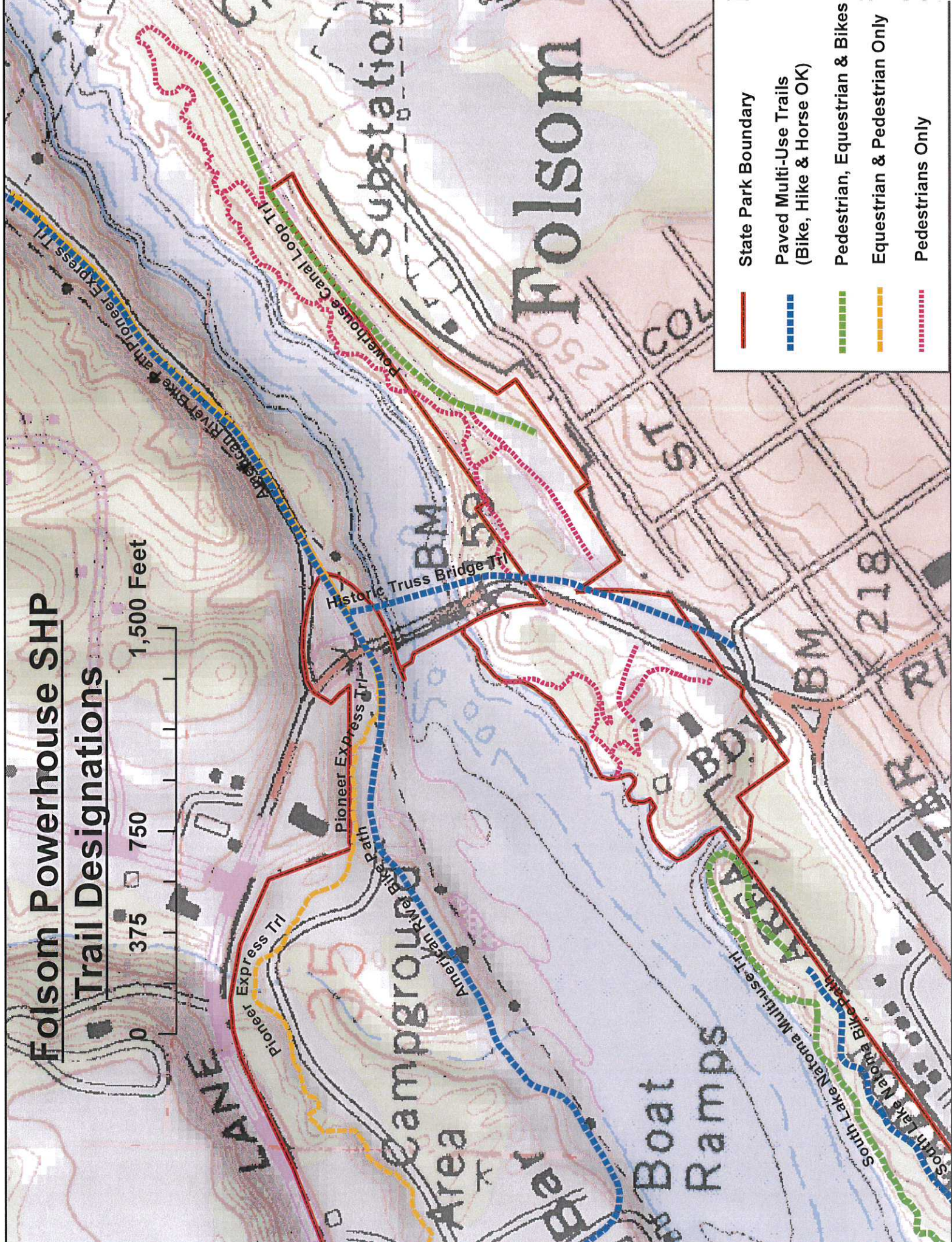


# Folsom Powerhouse SHP

## Trail Designations

1,500 Feet

375 750

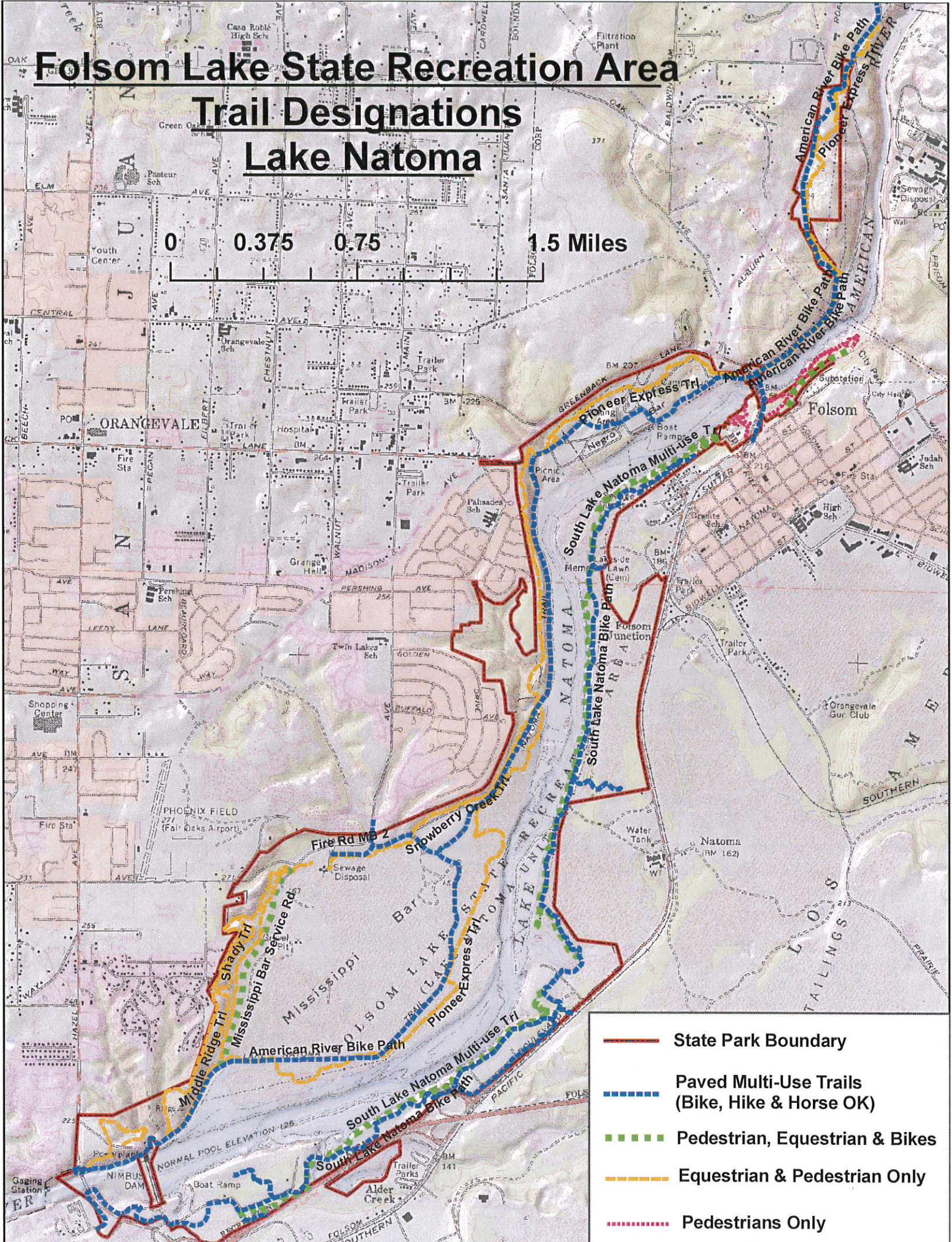


- State Park Boundary
- - - Paved Multi-Use Trails (Bike, Hike & Horse OK)
- - - Pedestrian, Equestrian & Bikes
- - - Equestrian & Pedestrian Only
- · · Pedestrians Only

# Folsom Lake State Recreation Area

## Trail Designations

### Lake Natoma



- State Park Boundary
- - - Paved Multi-Use Trails  
(Bike, Hike & Horse OK)
- - - Pedestrian, Equestrian & Bikes
- - - Equestrian & Pedestrian Only
- · · Pedestrians Only