

MEDIA ADVISORY

CALIFORNIA DEPARTMENT OF PARKS AND RECREATION

Division of Boating and Waterways | Off-Highway Motor Vehicle Recreation Division | Office of Historic Preservation

For Immediate Release

April 14, 2025

Contact:

California State Parks

[Dan Falat](#)

District Superintendent

(805) 927-2065

CAL FIRE

[Toni Davis](#)

Public Info. Officer

(805) 242-6250

Air Pollution Control District

[Meghan Field](#)

Public Info. Officer

(805) 781-5912

Morro Bay Fire Dept

[Matthew Vierra](#)

Deputy Chief

(805) 712-1941

Prescribed Burning at Montaña de Oro State Park, Morro Bay State Park, Estero Bluffs State Park, Hearst San Simeon State Park San Luis Obispo County

What: Prescribed burning of brush piles and broadcast burning.

When: Tuesday, April 15th through Friday, May 30th. Actual burn days will occur Tuesdays through Thursdays and will be determined by weather and permit conditions. Ignitions may start as early as 7 a.m. with fire activity curtailed by approximately 5 p.m.

Where: **Montaña de Oro State Park** – burn sites include approximately 400 brush piles and the duff layer between Horse Camp and Hazard Canyon along Pecho Valley Road; approximately 50 piles around E Camps 1 and 2; approximately 50 piles on Butte Drive; and 10 piles on Sea Wind Way.
Morro Bay State Park – burn sites include approximately 50 brush piles on the Black Hill area; approximately 50 piles between Upper State Park Road and Park View Drive in the Powerline Trail area.
Estero Bluffs State Park – approximately 10 piles located on west bank of San Geronimo Creek.
Hearst San Simeon State Park – approximately 50 piles in the Monterey pine forest near San Simeon Loop Trail off Highway 1.

Why: To reduce fuel loads and fire hazards as well as enhance the health of the native plant communities, and aid in the control of non-native, weedy species.

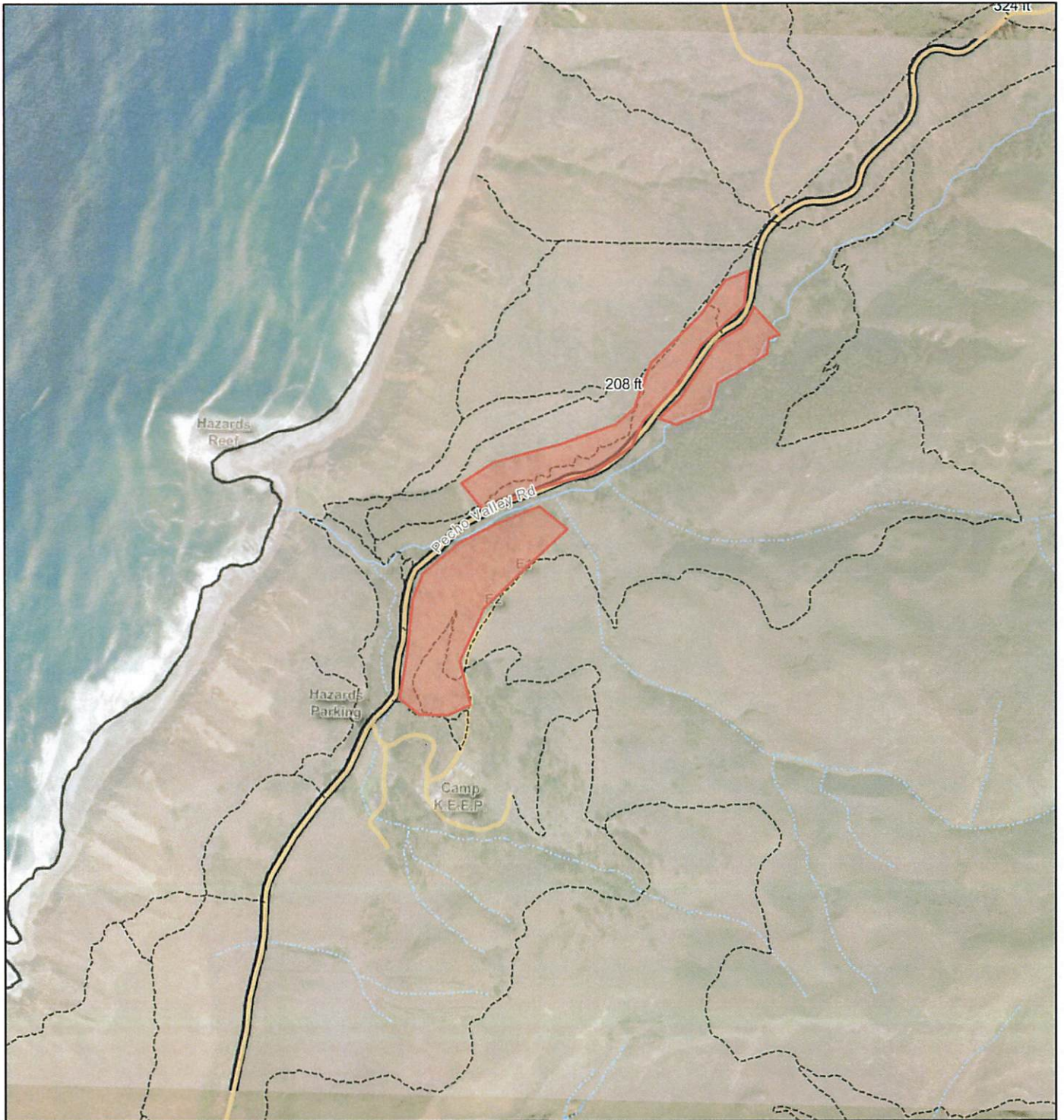
Who: California State Parks, in cooperation with CAL FIRE and the Air Pollution Control District. For more information, please call Dan Falat, District Superintendent, San Luis Obispo Coast District, (805) 927-2065.

###

Subscribe to California State Parks News online at parks.ca.gov/newsroom or click [here](#).

The California Department of Parks and Recreation, popularly known as State Parks, and the programs supported by its Office of Historic Preservation and divisions of Boating and Waterways and Off-Highway Motor Vehicle Recreation provides for the health, inspiration and education of the people of California by helping to preserve the state's extraordinary biological diversity, protecting its most valued natural and cultural resources, and creating opportunities for high-quality outdoor recreation. Learn more at parks.ca.gov.
[Facebook](#) | [X](#) | [Instagram](#) | [YouTube](#) | [Blog](#) | [Threads](#)

MDO Burn Piles



12/16/2024, 12:57:07 PM

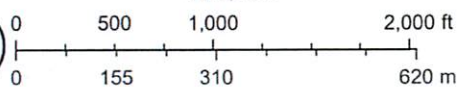
- SP Trail
- SP Road

Creek

- 0
- 1

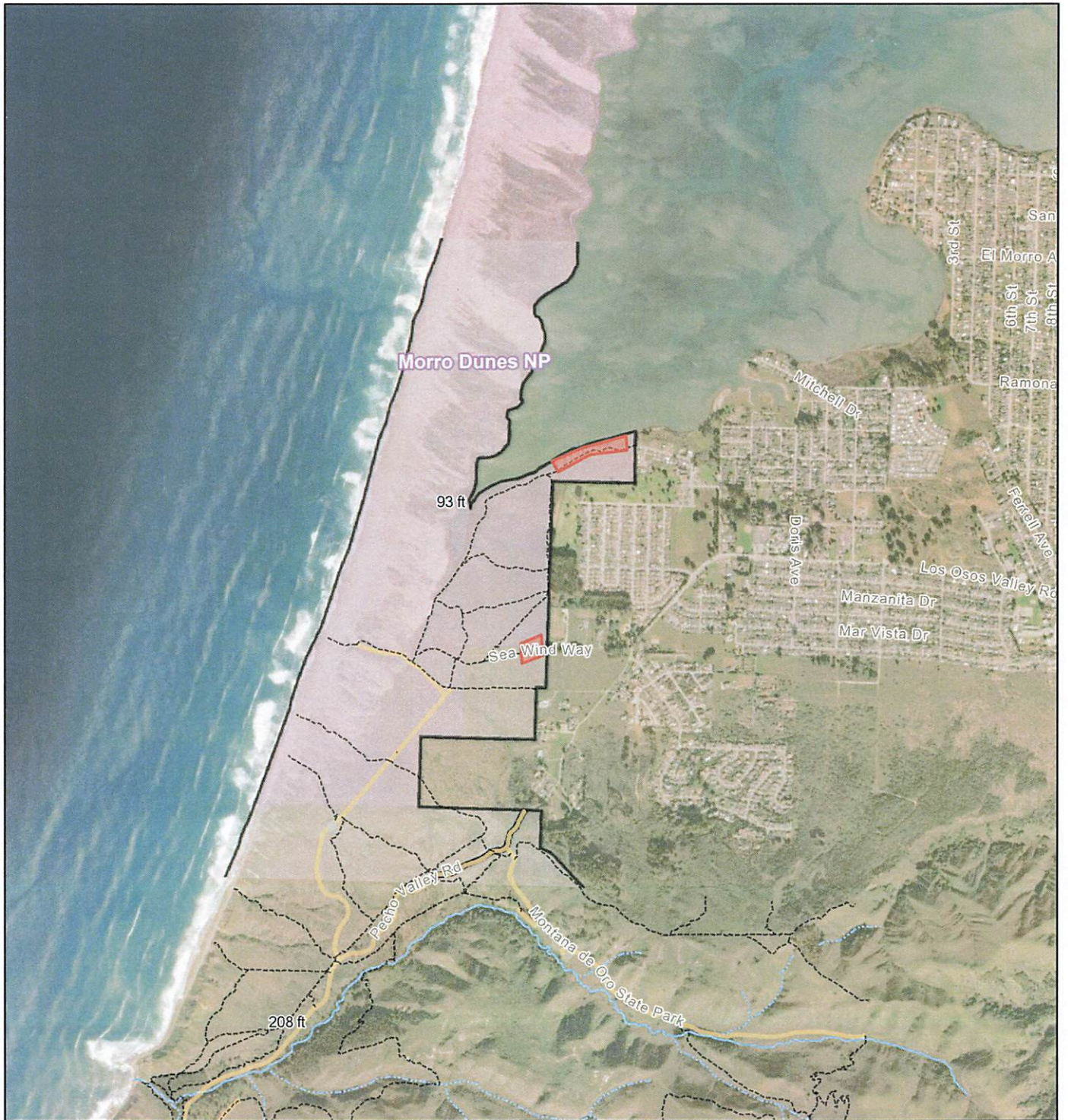


1:11,232



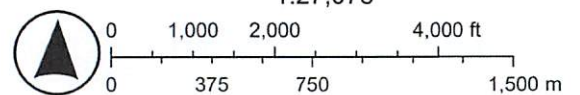
Esri Community Maps Contributors, California State Parks, Esri, TomTom, Garmin, SafeGraph, GeoTechnologies, Inc, METI/NASA, USGS, Bureau of Land Management, EPA, NPS, US Census Bureau, USDA, USFWS, Maxar

MDO Butte Drive and Sea Wind Way Piles



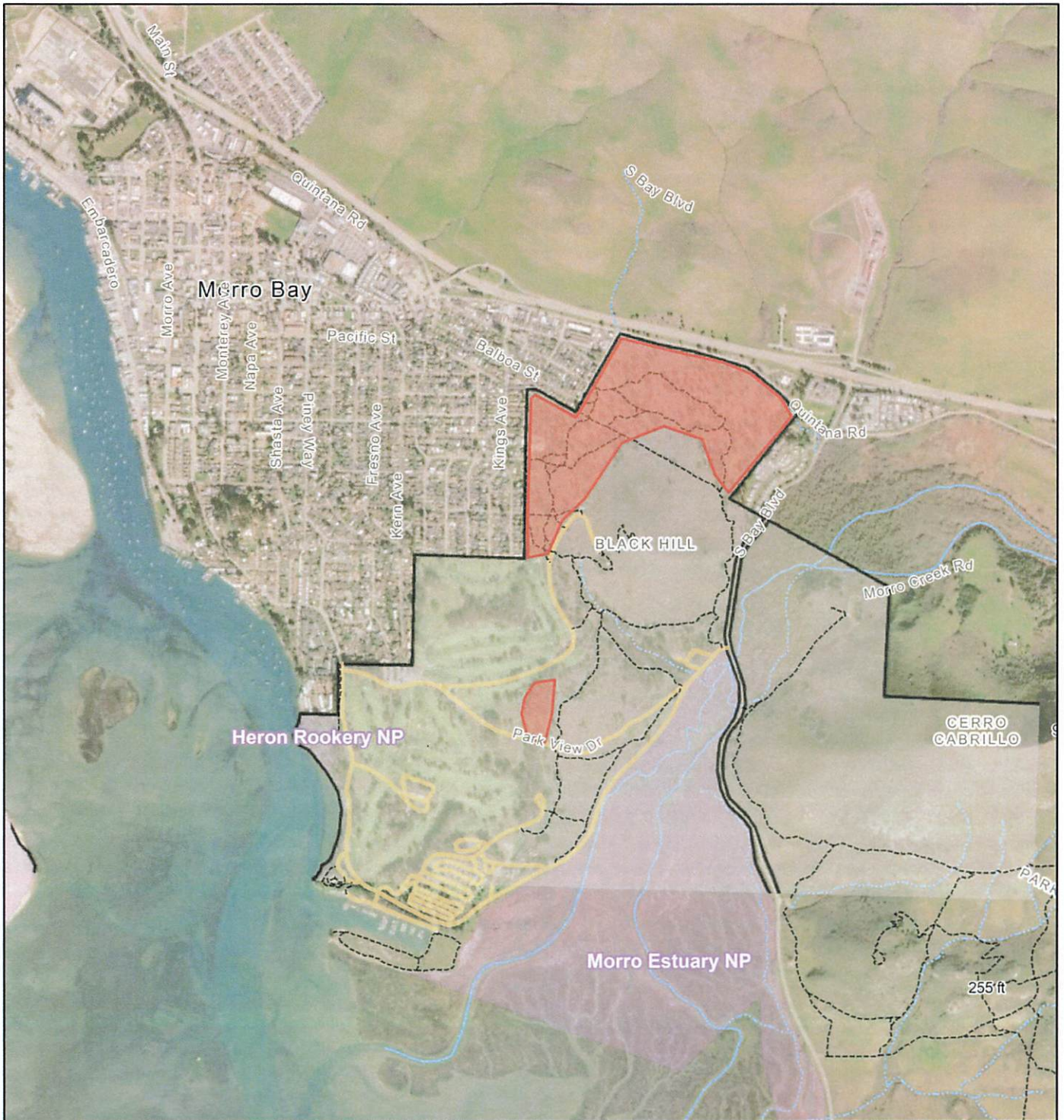
1/9/2025, 1:09:54 PM

- SP Trail
- SP Road
- SLOCD - Preserves/Reserves/Protected Areas
- Creek
- 0
- 1



California State Parks, Esri, TomTom, Garmin, SafeGraph, GeoTechnologies, Inc, METI/NASA, USGS, Bureau of Land Management, EPA, NPS, US Census Bureau, USDA, USFWS, Earthstar Geographics

Morro Bay State Park Burn Piles

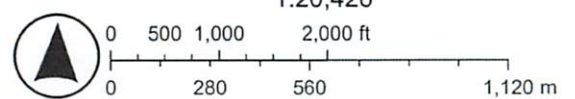


1/9/2025, 1:26:53 PM

- SP Trail
- SP Road
- SLOCD - Preserves/Reserves/Protected Areas

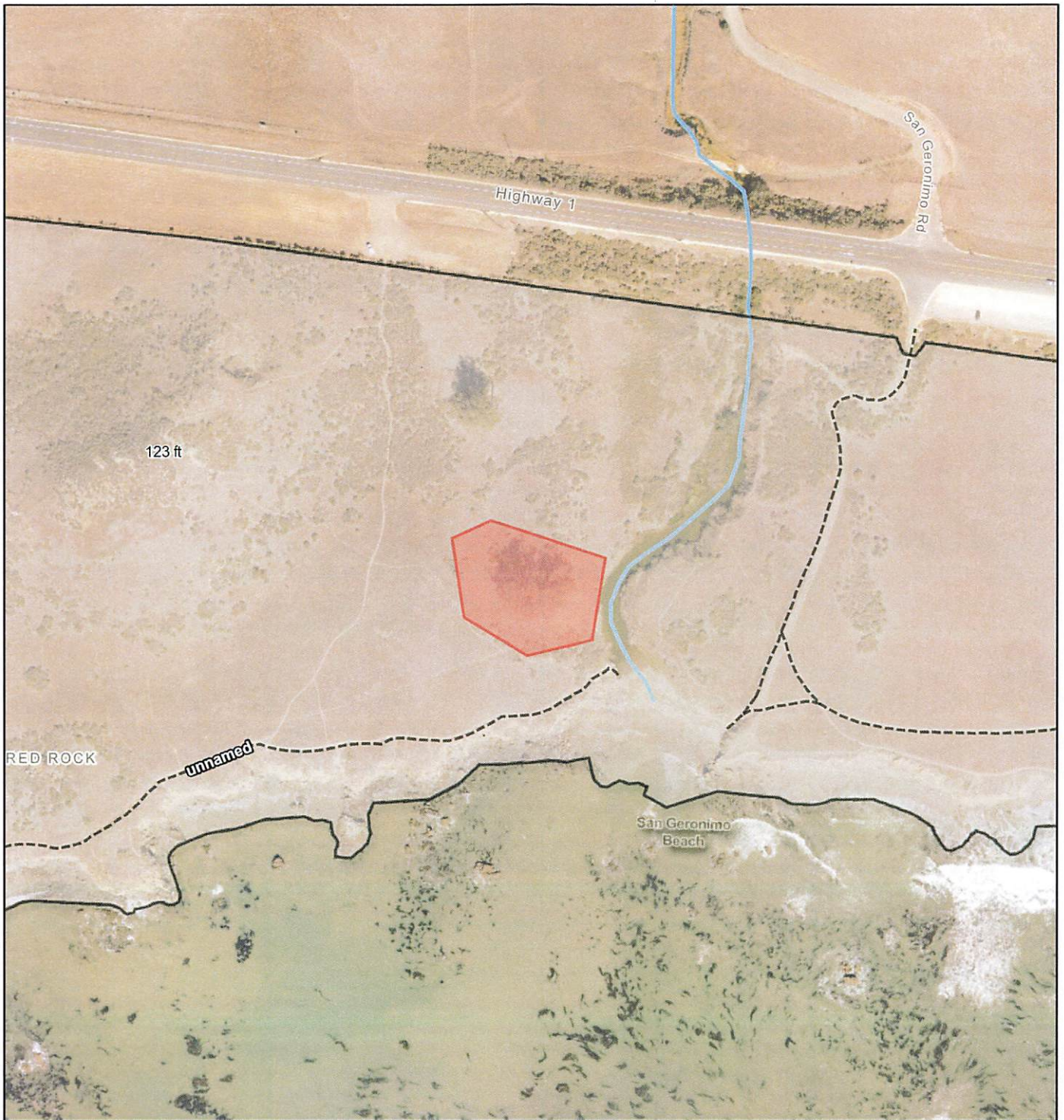
Creek

- 0
- 1



California State Parks, Esri, TomTom, Garmin, SafeGraph, GeoTechnologies, Inc, METI/NASA, USGS, Bureau of Land Management, EPA, NPS, US Census Bureau, USDA, USFWS, Maxar

EBSP Burn Pile Map

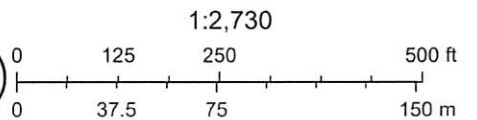


11/6/2024, 2:14:45 PM

----- SP Trail

Creek

1



County of San Luis Obispo, Maxar, Esri Community Maps Contributors, County Of San Luis Obispo, California State Parks, © OpenStreetMap, Microsoft, Esri, TomTom, Garmin, SafeGraph, GeoTechnologies, Inc, METI/ NASA, USGS, Bureau of Land Management, EPA, NPS, US Census Bureau, USDA, USFWS

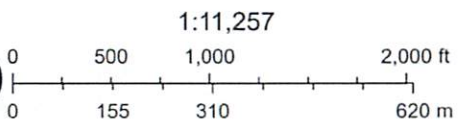
Hearst San Simeon State Park Burn Piles



3/3/2025, 9:04:42 AM

- SP Trail
- SP Road
- SLOCD - Preserves/Reserves/Protected Areas
- Creek
- 0
- 1

World Imagery
 Low Resolution 15m Imagery
 High Resolution 60cm Imagery
 High Resolution 30cm Imagery
 Citations
 2.4m Resolution Metadata



Sources: Esri, TomTom, Garmin, FAO, NOAA, USGS, © OpenStreetMap contributors, and the GIS User Community, Maxar