



PUBLIC MEETING

Wildwood Canyon Park Property Classification



Classification & Naming



Parks properties are classified by the Commission in one or more of several classifications defined in the Public Resources Code Sections 5019.50 - 5019.80.

Unit classification determines the primary focus for management of resources and allowable recreational and land uses, which provides the framework for preparing a general plan.

No new facility or use may be developed in any unit of the state park system unless it is compatible with the classification of the unit.

Classification & Naming Process



Understanding Classification: Activities

TYPES AND RANGE OF ACTIVITIES/DEVELOPMENT



TRAIL SYSTEM

Ex. Paved and unpaved trails

Low-intensity: Fewer, narrower, or shorter trails, limited to hiking only. May have time restrictions. Smaller staging or parking areas.

High-Intensity: More, wider, and longer trails that allow biking and equestrian usage. Fewer time restrictions. More and larger staging and parking areas.



INTERPRETIVE ACTIVITIES

Ex. Guided tours, programs, exhibits, and visitor centers

Low-intensity: Limited guided tours, fewer exhibits, and programs. Smaller visitor center, if any, with limited development footprint.

High-Intensity: Multiple and frequent tours, more exhibits and programs. Larger facilities and more extensive development footprint.



RECREATION

Ex. Wildlife viewing, picnicking, swimming, boating, rock climbing, and other recreational activities

Low-intensity: Fewer and smaller areas for activities and support amenities. May have restrictions on hours, duration, and seasons. Smaller staging or parking areas.

High-Intensity: More and larger areas for activities and support amenities. Fewer restrictions on hours, and duration, and seasons. More and larger staging and parking areas.



OVERNIGHT LODGING

Ex. Camping, RVs, trailers, and hotels

Low-intensity: Fewer and smaller overnight options with minimal facilities. May have restrictions on hours, duration, and seasons.

High-Intensity: More and larger overnight options, with more facilities and amenities. Fewer restrictions on hours, duration, and seasons.



STATE RECREATION AREAS

Purpose: Provide outdoor recreational opportunities.

STATE PARKS

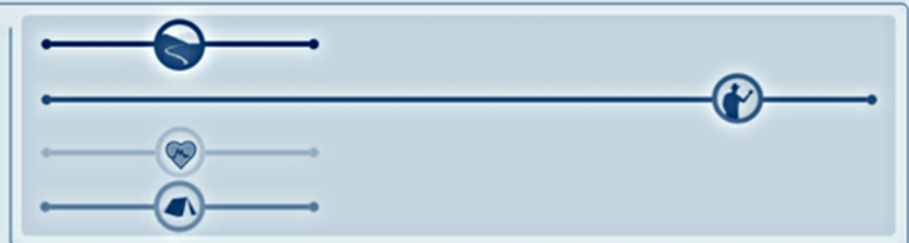
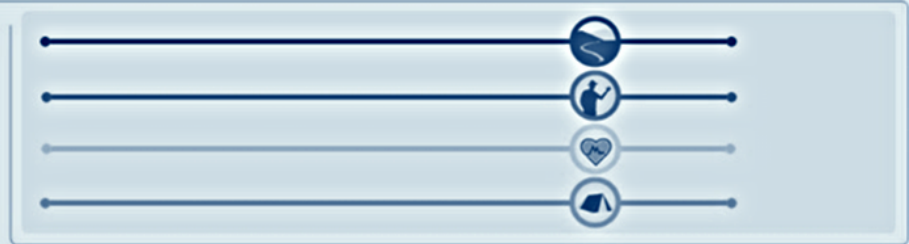
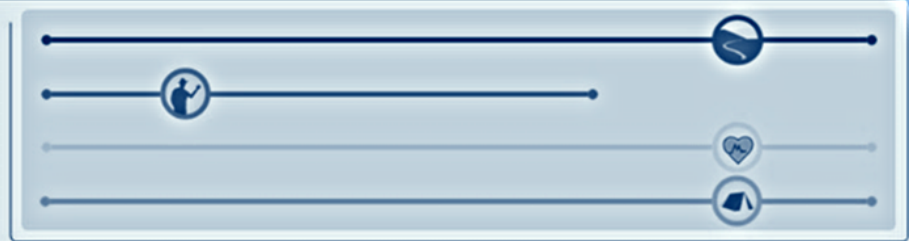
Purpose: Preserve areas of outstanding natural, scenic, ecological, and cultural value; allow for public enjoyment and education.

STATE RESERVES

Purpose: Preserves native ecological associations, unique biotic characteristics, geological features, scenic qualities, and/or cultural resources; allow for public enjoyment and education.

STATE HISTORICAL UNITS

Purpose: Preserve objects of historical, archaeological, and scientific interest.



Regional Map



Regional Map

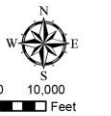
Legend

- Tribal lands
- Wildwood Canyon Boundary
- California State Park Boundaries
- Other Public Lands

Map Location



Scale
1:300,000



Notes:

Parcel boundaries are approximate and should not be considered legal descriptions. Maps are intended for study purposes only.

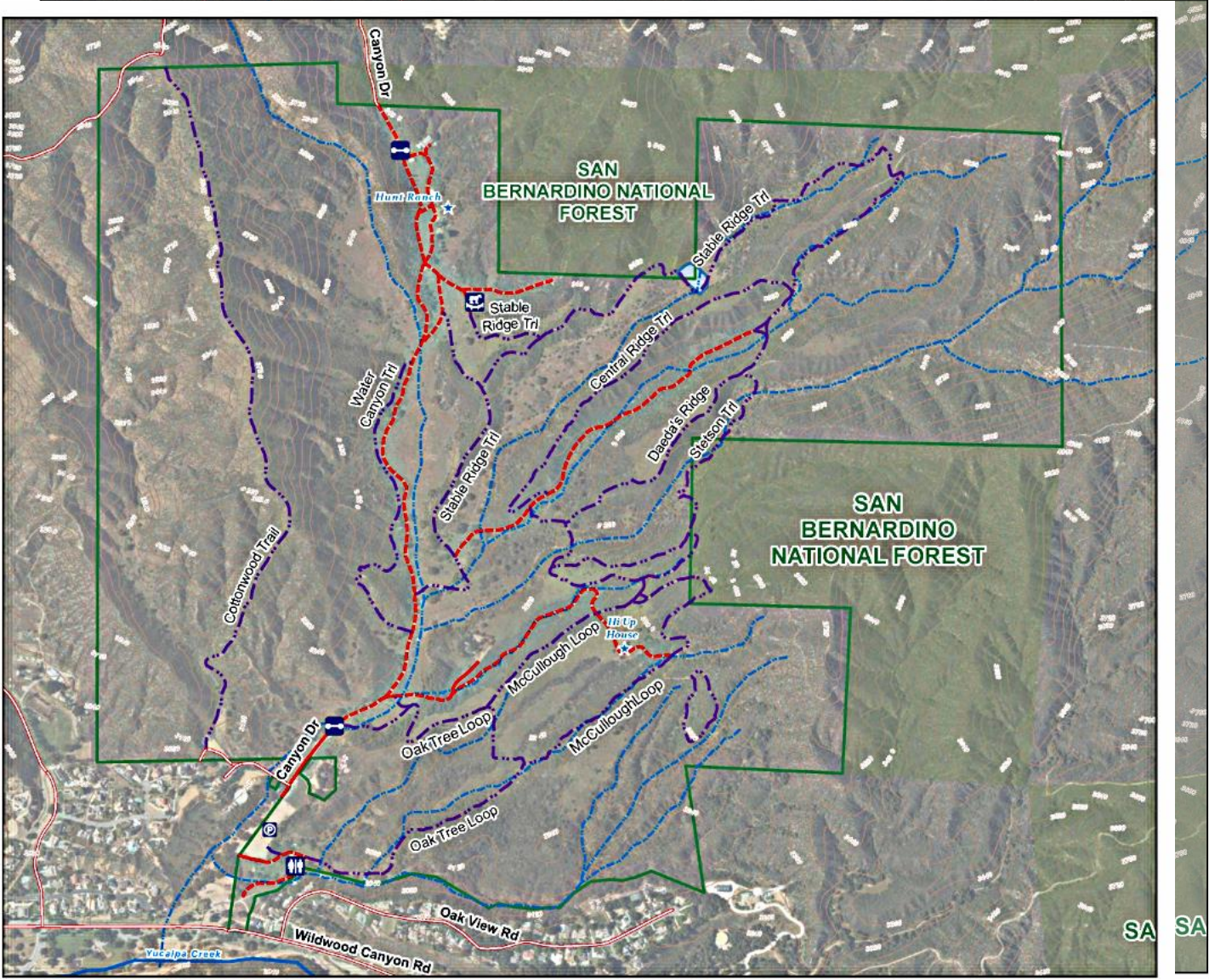
CALIFORNIA STATE PARKS Inland Empire District & STATEWIDE PLANNING & RECREATION SERVICES

Sources: California Dept. of Parks & Recreation; ESRI



Date: 11/8/2024

Wildwood Canyon Classification Project



Overview Map

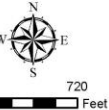
Legend

- | | |
|----------------------|-----------------|
| State Parks Boundary | State Park Road |
| Corral | Unpaved Road |
| Restrooms | POI |
| Multi-use Trail | |
| Local Roads | |

Map Location



Scale
1:11,249



Notes:

Parcel boundaries are approximate and should not be considered legal descriptions. Maps are intended for study purposes only.

CALIFORNIA STATE PARKS Inland Empire District & STATEWIDE PLANNING & RECREATION SERVICES

Sources: California Dept. of Parks & Recreation; ESRI



Date: 11/8/2024

Wildwood Canyon Classification Project

Overview Map

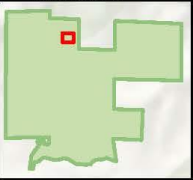


Hunt Ranch Map

Legend

- Points of Interests
- Unpaved Road

Map Location



Scale
1:600



Notes:

Parcel boundaries are approximate and should not be considered legal descriptions. Maps are intended for study purposes only.

CALIFORNIA STATE PARKS Inland Empire District & STATEWIDE PLANNING & RECREATION SERVICES

Sources: California Dept. of Parks & Recreation; ESRI



Date: 11/8/2024

Wildwood Canyon
Classification Project

Hunt Ranch Map



Thank you.

For additional information please visit:

https://www.parks.ca.gov/?page_id=22883

Or email us at:

wildwoodcanyon@parks.ca.gov



© California State Parks

