



New State Park - Inland Area

Management Zones

Backcountry Zone

Key Management Goals

- Preserve the natural, cultural, and scenic resources, and sense of solitude
- Provide access and resource connectivity with Palo Corona Regional Park

Visitor Uses

- hiking
- limited backcountry camping
- guided interpretive programs
- wildlife/scenic viewing
- photography

Appropriate Facilities

- scenic viewpoints
- trails/trailheads

Proposed Cultural Preserve

Key Management Goals

- Preserve/protect cultural resources
- Provide interpretive opportunities

Visitor Uses

- visitor day use, including:
 - interpretive programs
 - opportunities for Native American village re-creation, ceremonial and traditional uses, and special events

Appropriate Facilities

- interpretive elements
- Native American ceremonial facilities



A.M. Allan Ranch Zone

Key Management Goals

- Manage primarily for historic value and interpretation
- Provide access to backcountry recreation and trails leading to Palo Corona Regional Park
- Provide staff housing and centralized park operations and maintenance facility

Visitor Uses

- visitor day use, including:
 - visitor orientation
 - picnicking
 - hiking
 - access to Palo Corona Regional Park
 - interpretive programs
 - special events (by permit)

Appropriate Facilities

- trails/trailheads
- parking
- picnic areas
- restrooms
- interpretive elements
- adaptive re-use of historic buildings
- potential future public residential use



Proposed Point Lobos Ridge Natural Preserve

Key Management Goals

- Protect Monterey pine and Gowen cypress forests, central maritime chaparral, sensitive species, mountain lion habitat, and wildlife corridors

Visitor Uses

- visitor day use, including:
 - hiking
 - birding/wildlife viewing
 - interpretation
- scientific research

Appropriate Facilities

- trails
- scenic viewpoints
- interpretive elements

Proposed San Jose Creek Natural Preserve

Key Management Goals

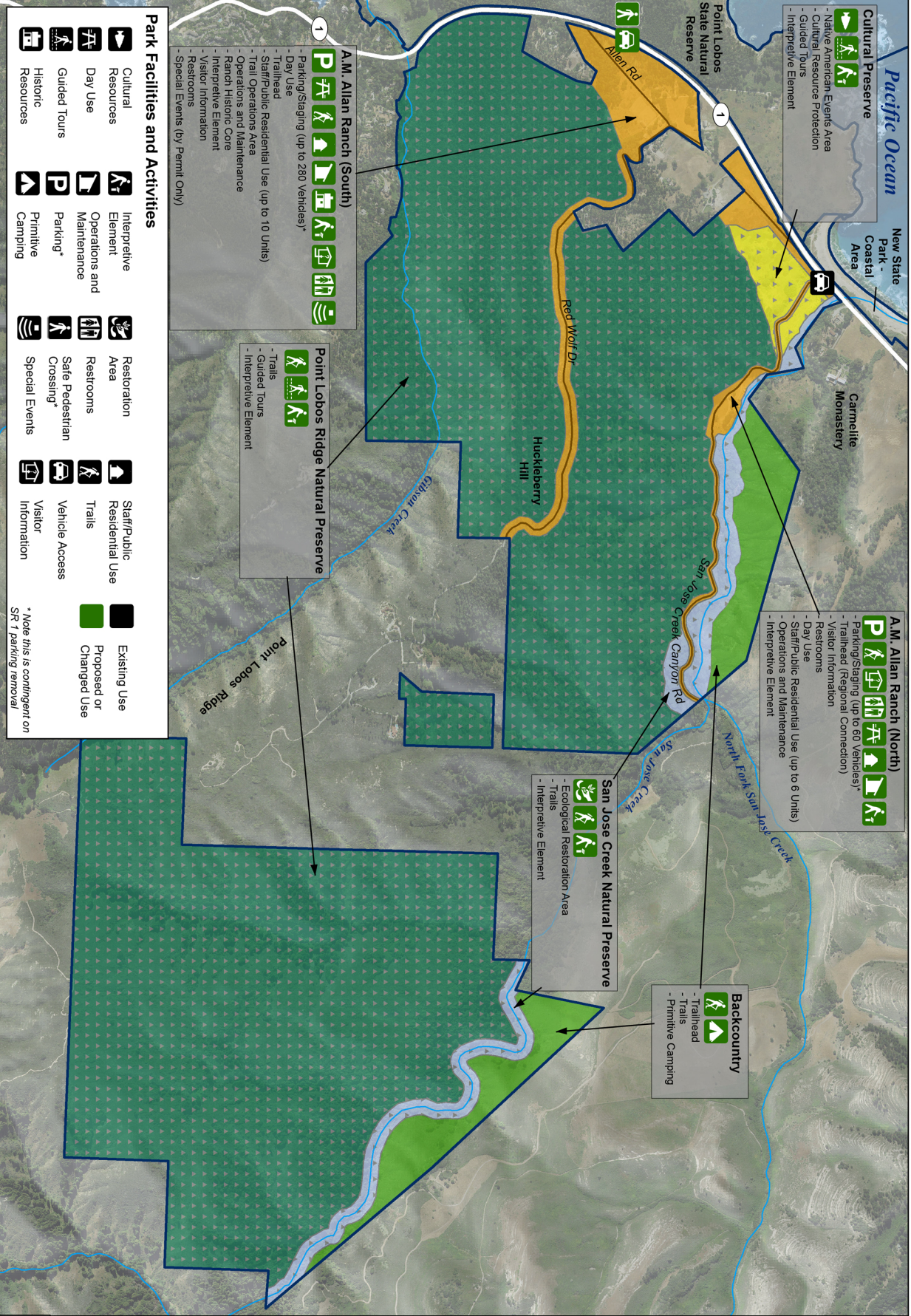
- Protect watershed, water quality, riparian habitat, and sensitive species of San Jose Creek

Visitor Uses

- visitor day use, including:
 - hiking
 - interpretation
- scientific research

Appropriate Facilities

- trails
- interpretive elements
- trail connections to higher elevations and adjacent open space



Carmel Area State Parks General Plan

Preferred Alternative New State Park - Inland Area

Legend

- Existing
- Planning Area Boundary
- Highway
- Paved Roads
- Creek

Management Zones

- Cultural Preserve
- Point Lobos Ridge Natural Preserve
- San Jose Creek Natural Preserve
- A.M. Allan Ranch Preserve
- Backcountry

Parcel boundaries are approximate and should not be considered legal descriptions. Maps are intended for study purposes only.

Source: DPR 2012, CalTrans 2012

Aerial Imagery: NALP 2014

G13010017.01.d48

0 600 1,200 Feet

ASCENT

Preferred Alternative: New State Park - Inland Area