



GREAT VALLEY GRASSLANDS STATE PARK GENERAL PLAN - STAKEHOLDER #2 MEETING FEEDBACK

On Monday, June 30, 2025, California State Parks hosted a virtual stakeholder meeting to introduce the draft concept alternatives map and gather feedback from local groups and organizations. Thirteen stakeholders attended the meeting to represent agencies and organizations in the San Joaquin Valley region. The meeting began with a brief overview of progress to date and a summary of each alternative, followed by an interactive online activity conducted using MURAL, an online engagement platform. For the activity, each emphasis area was paired with a map illustrating varying intensities of key improvements, including a large map of the entire park and a smaller zoomed-in map focused on the park's northwestern region for more detailed input. The feedback received is summarized below. See Figure 1 for a screenshot of the activity.

Slido Question Results

Two questions were asked during the presentation using the virtual engagement tool, Slido. The answers and responses received are listed in the following sections.

Questions #1: Are there other major issues that should be addressed in the General Plan?

- Need year-round parking along Highway 165 and improved signage.
- Is there a way to connect outreach opportunities and programming in coordination with Dos Rios?
- Provide safe disposal of coals from campfires/barbecues to minimize wildfire risk, as well as fishing line disposal containers and educational information.
- No parking on the Highway 165 side.
- Will there be opportunities for the public to get involved in restoration efforts?
- Would additional infrastructure require user fees?
- Increase opportunities for passive, non-motorized recreation (e.g., trails, kayak launch sites).
- The river is constantly changing—safety and cleanliness are only snapshots in time. It's not possible to predict the future.
- Staff should be available to offer multilingual programming (Spanish).
- Include bilingual signage (Spanish).

- Is it better to leave the park less impacted by humans—preserving it as is—rather than developing it for human benefit?
- It looks like you're considering floodplain reconnection and siting recreational facilities away from sensitive plant areas—that's good!
- Will there be specific opportunities for cultural events led by the local tribal community?
- Will it be safe and clean to swim in the river at the park?

Question #2: Based on what you know so far, is there an alternative that you prefer?

- Recreation Emphasis Alternative: 0 votes (0%)
- Resource Management Emphasis Alternative: 6 votes (55%)
- Blended Recreation and Resource Management Alternative: 5 votes (45%)
- Not sure/Need more information: 0 votes (0%)

Resource Management Emphasis Alternative

Attendees highlighted ecosystem restoration priorities, particularly levee removal and invasive species control, while questioning the necessity of North Levee Road. There was strong interest in community involvement, tribal leadership opportunities, and equitable fee structures for this conservation-focused alternative.

Parkwide Map Comments

- Why not remove North Levee Road?
- North Levee is degrading soil/groundwater quality in private agriculture land north of the park
- Long-term opportunity for land acquisition north of current park boundary, especially post flood event
- Desire to minimize impact to cultural sites with South Levee Road levee removal – cultural survey will influence design

- Opportunity to reuse spoils from levee removal at a multi-agency visitor center at SR 165 within the park
- Support for removing levees south of the river

SR 140 Enlargement Map Comments

- Can we add signage or invasive species controls at park entrance points? (e.g., boot brushes, kiosks). Many invasive annual grasses are spread throughout the park
- Opportunities for Traditional Ecological Knowledge (TEK) from local tribes; opportunity for tribal members to lead efforts in the park
- Opportunities for local public to be involved in restoration efforts
- Support for river access along trail from the SR 140 side of the park
- Do visitor fees make sense in the Resource Management Alternative, if not introducing larger facilities? Can fees be waived for local community members or school groups?
- Future discussion is needed for fee structure at the park
- Fees collected by CDFW on Wed/Sat/Sun – discussion about sharing revenue in future
- Add restoration and revetment removal south of river in the SR 140 side of the park

Recreation Emphasis Alternative

There was support from attendees for day use access and boat-in camping, but the group raised concerns about RV infrastructure needs and flooding impacts in the SR 140 area. Questions focused on practical implementation of facilities and flood management strategies.

Parkwide Map Comments

- Support for day use access and boat-in camp off North Levee Road; suggestion that these could be premium campsites

SR 140 Enlargement Map Comments

- Can we call out river access at day use areas/trail amenities in other alternatives?
- What are infrastructure needs for RV camping? Would include significant new infrastructure; impacts would be analyzed in environmental review
- SR 140 area is frequently flooded up to 1 foot; RV dump stations could have environmental concerns. Other land managers use portable toilets and remove during flood events
- Current vault toilet hasn't had flooding issues in last decade and is designed above flood elevation

Blended Recreation and Resource Management Alternative

Attendees supported balanced recreation and conservation approaches, particularly favoring Salt Slough access and trail connections. Key concerns included invasive species management, enforcement needs, and coordination with other agencies and transit providers.

Parkwide Map Comments

- Support for day-use access and boat-in camping off North Levee Road; suggestion that these could be premium campsites
- Preference for a new park entrance in the southeast portion of the park off SR 165 with potential boat-in campsites along Salt Slough, instead of via North Levee Road
- Aquatic invasive species control: need to control species from both visitors and maintenance vehicles

- Water trail infrastructure needs? Would include launch areas, paddler information, and interpretive materials
- Coordinate with USFWS on Salt Slough and Freitas Unit water access
- General support for connecting SR 140/165 sides of the park with a trail
- Could there be public access from Salt Slough? Area is high ground and could support camping, but it dries out during summer and would not support river access; San Joaquin dries up too; both areas receive water released from Friant Dam

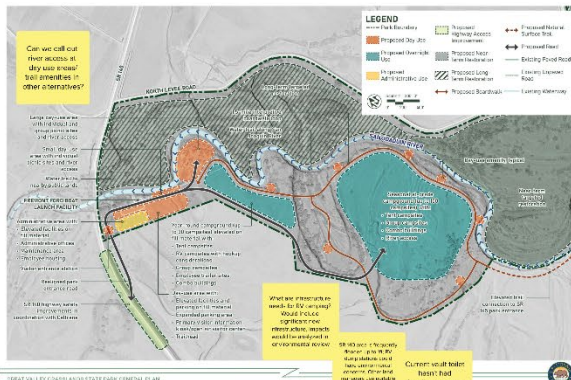
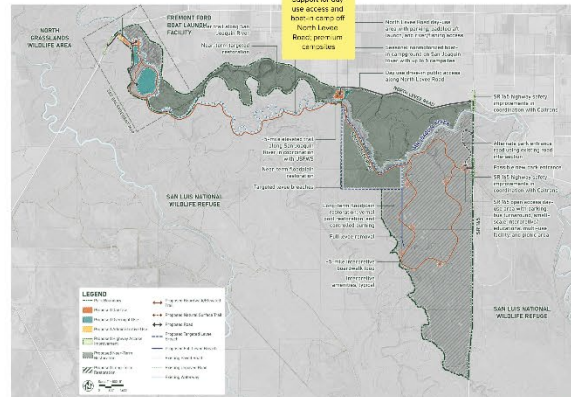
SR 140 Enlargement Map Comments

- How can we increase public transit to park by working with transit providers? Could it help minimize the need for parking?
- A boat wash station and signage near the boat launch ramp could be a good idea for invasive species control
- Camping will require more enforcement. River Park Sector has been increasing staffing as sector and facilities expand. Would need to adaptively manage enforcement
- How to discourage motorized use within the park? Trailhead gates, fencing, bollards, and/or boulders; posted speed limits. Park has limited OHV use historically
- What has been community interest in camping at the park?
- There is demand for camping in the area - other River Parks fill to capacity on weekends (less than 100 total in the area)
- Restoration and river revetment removal south of river from SR 140 side
- Opportunities for water trail loop like at Caswell? Could have trail connection along short span of river along SR 140 area

Figure 1: Screenshot of Stakeholder Meeting #2 Mural Board Activity

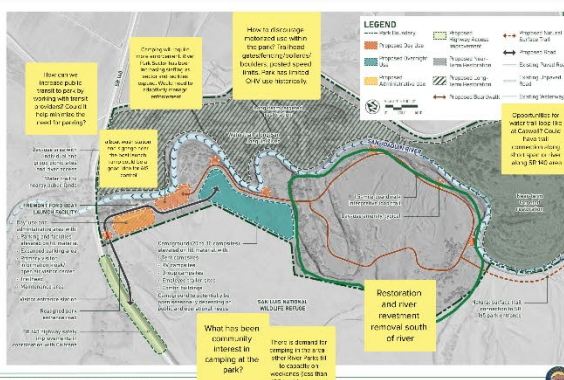
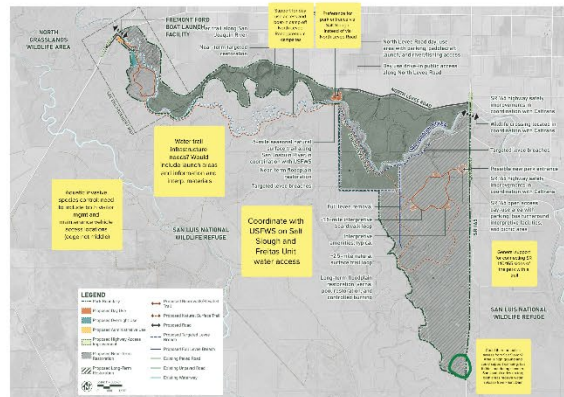
RECREATION EMPHASIS ALTERNATIVE

What do you like about this alternative? What do you dislike?



BLENDED RECREATION AND RESOURCE EMPHASIS ALTERNATIVE

What do you like about this alternative? What do you dislike?



RESOURCE MANAGEMENT EMPHASIS ALTERNATIVE

What do you like about this alternative? What do you dislike?

