

California State Park System

*Statistical  
Report*

2001/02 Fiscal Year

Planning Division



## **PUBLICATION INFORMATION**

Date of Printing: October, 2003

Number of Copies: 400

## **CATALOGING INFORMATION**

California. Dept. of Parks and Recreation.

California State Park System Statistical Report: 2001/02 Fiscal Year.  
Sacramento, Calif. : Planning Division, California Department of Parks and  
Recreation

v. : map ; 28 cm.

Annual.

Current issue available via the World Wide Web.

Electronic version: (HTTP) Current issue, <http://www.parks.ca.gov>

1. California. Dept. of Parks and Recreation—Planning—Periodicals. 2. Parks—  
California—Planning—Periodicals. I. Title

Suggested LC call no.: GV54.C2 A241

California State Library call no. (CALDOC): P155.S7

\* \* \* \* \*

© 2003 by California State Parks. All rights reserved.

Printed in Sacramento, California, October 2003.

Initial printing of 400 copies of document and map.

California State Parks does not discriminate against people with disabilities.

To use the California Relay Service with TTY, call (888) 877-5378 or, without  
TTY, call (888) 877-5379.

This publication is available in alternate formats by contacting the Planning  
Division at (916) 653-9901 or visiting [www.parks.ca.gov](http://www.parks.ca.gov).



Printed on recycled paper.

## Errata

### *California State Park System Statistical Report: 2001/02 Fiscal Year*

The following are corrections for typographical and formulaic errors in the original report. (All the corrections have been made to this on-line version of the report)

#### Chapter 1

Page 8; line 7:

**"88,002,118"** should read **"85,537,217"**

#### Chapter 3

Page 8; line 8:

**"...11.7% over...47.5% increase..."** should read **"...8.5% over...43.3% increase..."**

Page 19; Will Rogers SB row; Individual Camp Sites column:

**the one blank cell** should read **"0"**

Page 27; Stone Lake row; Day Use, Camping and Total columns:

**the three blank cells** should read **"0 0 0"**

Page 29; Angel Island Sector row; Day Use, Camping and Total columns:

the three cells with **"2,331,602 133,362 2,464,964"** should be **blank**

Page 29; MARIN DISTRICT TOTALS row; Day Use, Camping and Total columns:

the three cells with **"4,663,204 266,724 4,929,928"**

should read **"2,331,602 133,362 2,464,964"**

Page 45; MARIN DISTRICT TOTALS row; Day Use, Camping and Total columns:

the three cells with **"4,663,204 266,724 4,929,928"**

should read **"2,331,602 133,362 2,464,964"**

Page 45; NON-OHVMR DISTRICT (23) TOTALS row, Day Use, Camping and Total columns:

the three cells with **"78,931,462 6,608,586 85,540,048"**

should read **"76,599,860 6,475,224 83,075,084"**

Page 49; STATE PARK SYSTEM TOTALS row; Day Use, Camping and Total columns:

the three cells with **"80,951,289 7,050,892 88,002,181"**

should read **"78,619,687 6,917,530 85,537,217"**

This page intentionally left blank.

# Memorandum

**Date** : September 10, 2003

**To** : Readers of this 2001/02 Statistical Report

**From** : Department of Parks and Recreation  
Ruth Coleman, Director

**Subject** : *The California State Park System Statistical Report: 2001/02 Fiscal Year*

The *California State Park System Statistical Report: 2001/02 Fiscal Year* is the Department's first annual statistical report to be published in eleven years. This report allows the Department to evaluate itself and where it stands at a given point in time. An annual series of such statistical reports allows us to see the changes in our various activities and achievements, and to pose questions as to their significance and their consequences. Good management requires good measurements.

This statistical report presents virtually the same basic data sets as did earlier reports in this series. Beyond this similarity, many organizational and content changes have been made in the present report. One change is that this report has the State Park System's classified park units and major unclassified properties aggregated not just into districts, but into sectors. The report also provides a good deal of information about the sources, definitions and quality of the data it presents.

In an attempt to bridge the eleven-year gap when no statistical report was published, this report contains tables showing some of the most basic categories of data, at a high level of aggregation, for the missing years. Unfortunately, some data was impossible to locate or construct.

The data provided by this report shall be considered as official and correct - as the information "of record" to use in research, presentations and communications with others. By making this information the official figures for the 2001/02 fiscal year, all of us will speak with a common and consistent voice.

Any questions about this report, problems that may be found in it, or suggested changes that might be made in future editions, should be communicated to the Supervisor of the Planning Division's State Park System Planning Section. Such communications received in a timely manner will be used to improve the forthcoming State Park System statistical report for the 2002/03 fiscal year.

Original Signed By

Ruth Coleman  
Director

This page intentionally left blank.

## **DEDICATION**

Created and issued after an eleven-year absence of annual statistical reports for the State Park System, this 2001/02 fiscal year edition is dedicated to the concept of the value of basic organizational information. It is also dedicated to recognizing the efforts of the nearly anonymous staff people who created the Department's early statistical reports.

Relevant and realistic information is the basis of an organization's memory, the glue that holds it together and allows it to function well. Historic information allows one to understand the past and to use this knowledge to provide guidance for dealing with the problems and opportunities of the present and the near-term future.

In a well-functioning organization, the responsibilities of gathering and processing information are taken seriously. Data is defined carefully and processed with care. The resulting information is made widely known and readily available. Everyone can work from common, trusted information.

The staff people who have generated, processed and reported the State Park System's early statistical reports are today little known or recognized. They were mostly mid-level career staff people, program managers, analysts and technicians, who compiled these documents as one of their many tasks.

While the authors of this present statistical report cannot identify all of their predecessors through the past decades, three individuals have been identified with certainty as authors of earlier reports. Jane Puffer, Robert Margoson and Gene Erba have prepared perhaps the majority of the statistical reports done between the late 1960s and the end of the 1980s. To them the Department owes its thanks and its promise to keep the statistical report series alive.

This page intentionally left blank.



## TABLE OF CONTENTS (click on links below)

Dedication	i
Table of Contents	iii
Introduction	1
Chapter 1 – Summary and Analysis	5
Chapter 2 – Park System Size and Scope	11
Chapter 3 - Basic Park System Statistics	15
Chapter 4 – Basic Statistics - Definition of Terms	51
Chapter 5 - Other Available Information	59
Chapter 6 - History of this Report	65
Appendix A – Selected Data – 1990/01 to 2000/01	69
Appendix B – Public Use Facility Survey	77
Appendix C - Internal Units, Minor System Properties	85
Appendix D – Departmental Organization Chart	93
Appendix E - Other Sources of Park System Data	97
Publication Credits	99
Map	(in pocket inside back cover)

This page intentionally left blank.

## INTRODUCTION

Like any responsible organization, the California State Park System needs to clearly know the scope, scale and dimensions of its activities and operations. To have this knowledge, it needs information, as accurate as can reasonably be obtained, on its assets, its activities and its products.

Collectively, this information will give some measure of the California State Park System - what its various resources are, what it does with them, and what are the useful results of its activities. Such information will allow this organization to broadly view itself and its workings at a specific point in time and, when comparing this view with those taken at other points in time, will allow one to see and to analyze the changes that have occurred.

The central purpose of this edition of the annual Statistical Report is to provide information on the basic parameters of the California State Park System for a specific period of time, the 2001/02 fiscal year. This year spanned the period between July 1, 2001 through June 30, 2002. As indicated in Chapter 3, below, some of the data used to portray the System for this fiscal year is current as of the beginning of the year, July 1. Some is current as of the end of the fiscal year, June 30. Most of the data, however, reflects the measurement of activity that took place between these two points in time, during the course of the entire fiscal year.

It is a convention that the official number of classified units and major unclassified properties that constitute the State Park System is established on each fiscal year's first day, July 1, and does not change during that year. Parks and properties that are in reality added to (or removed from) the System during the year will not be officially included in the total until the first day of the following fiscal year.

Reflecting this convention, **the State Park System contained a total of 250 classified units and 16 major unclassified properties, for a total of 266 areas, during the 2001/02 fiscal year.**

For management purposes, these units and properties were grouped into districts, many of which further organized them into smaller groupings called sectors. The districts and sectors used in this publication reflect the organizational arrangement of the System's "field" on the last day of the fiscal year, June 30.

This statistical report will focus exclusively on information that is related to or reflects on the State Park System's "field" areas and activities, the system's 266 classified units and major unclassified properties. Specifically excluded from the

data on the System's "field" activities and expenditures is the small number of the functions that serve the field and are situated in field locations outside of headquarters, but are functions which are considered an extension of the headquarters' responsibilities. These include the three regional service centers (which provide unit-level planning and technical assistance), the three regional communication centers, and the statewide personnel training center. Also excluded are the Museum Collections Section and the Archaeological Lab and Collections.

The operation and management of the State Park System parklands and facilities requires perhaps 80% of the effort and expenditure needed to operate the department in which the System is administratively located, the California Department of Parks and Recreation. Most of the remainder of the non-"field" costs excluded from this report are those for accomplishing the wide array administrative and control functions that take place at the Sacramento headquarters. Also excluded are the costs of the Department's activities in managing those of its functions which are not related to the State Park System, mainly the administration the state's many park and recreation grant programs, the provision of technical assistance services to local park and recreation agencies and any expenses related to the Office of Historic Preservation.

During the 2001/02 fiscal year, the State Park System was host to many tens of millions of visitors, cost hundreds of millions of dollars to manage and operate, employed more than two thousand permanent staff people, and generated tens of millions of dollars in fees and other revenues.

During the course of this fiscal year, the funds and staff allocated at the field level were applied to many critical objectives involving the protection and management of the System's natural and cultural resources, as well as to the provision of high-quality resource-based outdoor recreation opportunities for park visitors. At the same time, staff provided the park visitors with a variety of direct services ranging from interpretive programs to public safety.

This report provides the fiscal year's year-end numerical information on many of the System's most basic activities, revenues and expenditures, reflecting certain of the System's more measurable "inputs" and "outputs" for the 365-day period.

Certain of this information, such as park acreage and visitor attendance, is available at the level of the individual unit or property. Other information, such as a park's operating costs and staffing numbers, is not available at the level of an individual park or property. Such information is available only at the district level, where such resources are initially allocated as a single amount, so as to allow the manager to make flexible sub-allocations to various units based on needs that shift throughout the year.

In general, this statistical report contains the most basic data for the 2001/02 fiscal year, as well as some analysis of this information. It also contains reference to important System data available outside the limits of this report, provides some data reflecting the eleven immediately prior fiscal years, a period during which no statistical reports were produced. The specific contents of this report are indicated below.

Chapter 1 highlights the salient points found in the report's data for the 2001/02 fiscal year, data which is found in detail in Chapter 3, and makes some analysis of this data's substance and significance. Some comparisons may be made with similar data sets from earlier annual statistical reports or from other sources.

Chapter 2 briefly describes the size and organization of the State Park System as it existed at the end of the 2001/02 fiscal year, June 30, 2002. This information is supplemented by a map of the System, which is found in a pocket located inside the back cover of this report.

Chapter 3 is the core of this report, its multi-page table providing the selected statistical information on the 266 classified units and major unclassified properties that constituted the State Park System during the 2001/02 fiscal year. The data categories and their sequence on the table are arranged so as to provide maximum comparability with the layout of previous statistical reports.

Chapter 4 provides important information about the basic data that appears in the table in Chapter 3. This includes definitions of the data categories and the terms that are used. Where important, the data collection methodology is described. This chapter also provides information on the known limitations in the scope and accuracy of this data, and indicates the sources within the Department where this data originates.

Chapter 5 provides information about and access to a variety of park-related data which is beyond the necessarily limited scope of this statistical report. The State Park System creates a wide variety of other data and information, often specialized in nature and less well known or available. This chapter provides references and citations which refer the reader to a variety of more specialized data on the System's field activity, management and operations.

Chapter 6 provides information on the history of the department's annual statistical report series and on its predecessor documents. It provides specific titles of documents containing basic data reaching back many decades.

Appendix A provides, in summary form, a limited number of key data sets that would have been provided in the statistical reports for fiscal years 1990/91 through 2000/01, had those reports been produced. This information is intended to partially fill this "data gap." This information will be published only in this edition of the System's statistical report.

Appendix B provides information on the methodology and the results of the detailed inventory used to develop data on the System's three basic types of public use facilities –overnight use (mainly camping), picnicking, and trail mileage – used in this report. This survey also contains information on the capability of these facilities to accommodate visitors, their "carrying capacity."

Appendix C provides, as a matter of having a complete record of the System's classified units, basic information for its 79 classified internal units, which are specialized units situated within the boundaries certain of other classified units. This appendix also identifies and provides limited data on a handful of small or minor properties which in 2001/02 were owned by the Department of Parks and Recreation but which were not associated with any of the State Park System's set of 266 classified parks and major unclassified properties.

Appendix D contains an organization chart of the California Department of Parks and Recreation, included here mainly to indicate the relationship of the State Park System's field units to the rest of the System and the to Department as a whole.

Appendix E provides references to sources of statistical data and other information about the State Park System and to collections of written materials which exist both internal to and external to the Department of Parks and Recreation. This information is very different from and does not duplicate the "Other Available Information" provided in Chapter 5 or the "Selected Data" provided in Appendix A.

Finally, a large, folded four-color map of California located in a pocket inside the back cover of this document shows the location of the system's 266 classified units and major unclassified properties, as well as the boundaries of the field districts, current as of June 30, 2002. It also shows the location of the 79 classified internal units that are located within the System's basic classified units.

A new and revised edition of this statistical report will be produced following the close of each fiscal year. Readers' suggestions for additions and improvements to this regularly issued document may be made to the State Park System Planning Section of the Department's Planning Division.

# CHAPTER 1

## Summary and Analysis

This page intentionally left blank.



## CHAPTER 1

### SUMMARY AND ANALYSIS

The purpose of this statistical report is to provide selected data sets which portray the fundamental measures of the California State Park System for the 2001/02 fiscal year. Collectively, this data shows the scope and scale of the System, its activities and operations, and offers implications of the benefits derived by its users. This large amount of data has been assembled in the extensive table that is the basis of Chapter 3, below.

The purpose of the present chapter is to draw from the data found in Chapter 3 and to highlight its major findings. In many cases, data from the 2001/02 fiscal year will be compared with that from earlier years, revealing changes over time. Where possible, some commentary will be made on the data or its trends, bringing useful perspective to the information presented.

In the present report, the ability to compare data through time will be limited due to the lack of comparable statistical information from the past eleven years, during which time statistical reports were not prepared. In the coming years, with statistical reports again prepared annually, such comparisons and analyses will become more meaningful and useful.

The present report's summary and analysis is limited to the systemwide totals of the various data sets. In future years, some of the analysis may be expanded to examine data at the district level, although difficulties in doing this are posed by the changes which are periodically made in district boundaries and thus in the units and properties which they contain.

This statistical report's summary, with its commentary and analysis, follows. For definitions of the data categories, see Chapter 4.

\* \* \* \* \*

Number of Units and Properties - The total figure of 266 remained the same as for the previous year. There was a net gain of only one from 1990/91, eleven years earlier. Over the course of this period, however, a small number of classified units and major unclassified properties were both added to and divested from the System, so that the System's specific set of units and properties varied somewhat from one year to the next.

Acreage, DPR-Owned - The total of 1,223,528.2 acres reflects an increase of 0.82% over the previous fiscal year and of 8.64% over the figure for 1990/01. The substantial gain reflected in the second figure was accomplished during a decade when the electorate had approved no new statewide park and recreation

bond acts, such measures historically being the major funding source for property acquisition activity. This gain of nearly a hundred thousand acres was the result of an unprecedented level of acquisition funding and land donations obtained from such non-departmental sources as conservancies, land trusts, gifts and donations.

Acreage, Other -The total of 209,567.8 acres shows a small decline of 0.24% from the previous fiscal year and a gain of 5.08% since 1990/01. While small changes are likely to occur during any year, large changes occur infrequently, as when the System first undertakes the management of a reservoir on a large area of land owned by a federal agency.

Total Acreage -The System's total acreage, a data category not found in the table, is the total of the two previous figures. At 1,433,096.0 acres, this total is an increase of 0.66% from the previous year and a gain of 8.10% over the figure for 1990/01 fiscal year.

Waterfront Feet (000) -The total of the three categories of waterfront footage is 6,364,200, or the equivalent of 1,205.3 miles. The waterfront footage related to the shoreline of lakes and reservoirs ("L") is 3,161.5 thousand linear feet, or 598.8 miles. The length of frontage on the Pacific Ocean and its major bays and estuaries ("O") is 1,660.5 thousand linear feet, the equivalent of 314.5 miles. The length of river footage ("R") is 1,542.2 thousand linear feet, or 292.1 miles. Data in the 1989/90 statistical report combines the three categories into one figure and does not allow the separate comparison of each category.

Individual Camp Sites - A total of 15,142 individual sites, as defined in Chapter 4 and determined by the survey described in Appendix B, below, existed in the State Park System in the 2001/02 fiscal year. Because of the way this type of camping facility (sometimes labeled as "family camp site") has been variously defined and counted over the last three decades, this figure cannot be usefully compared with any earlier information. Over the last twenty years, estimates have run as high as 17,772 sites. Two years ago, an informal consensus figure of 13,500 was developed.

In an effort to determine the change (not the total) in the number of such sites during the last decade, a 2001 State Park System Planning Section telephone survey of the districts. This survey indicated that, during that 10-year period that preceded the survey, 510 new "family" campsites were added to the System while 271 were eliminated. Most of the new sites came from the construction of one large and four modestly sized multi-site projects, as well as by acquiring a small new park with campsites in place. The losses were due to such factors as storm damage, habitat restoration, and the redesign of campsite areas.

Group Camp Sites - A total of 227 such sites, as defined in Chapter 4 and determined by the survey described in Appendix B, existed in the System in the

2001/02 fiscal year. The statistical reports in previous years very rarely had information for group campsites, making it impossible to make comparisons between data of different years.

Non-Camping Overnight Facilities - There were 590 such facilities, as defined in Chapter 4 and determined by the survey described in Appendix B, existing in the System. These facilities were a range of accommodations which include rooms in commercial lodging, occupancy of various types of primitive shelters and the use of space in hostels. The statistical reports in previous years had no data for non-camping overnight facilities, making it impossible to make comparisons between data of different years.

Individual Picnic Sites - A total of 7,227 such facilities, as defined in Chapter 4 and determined by the survey described in Appendix B, existed in the System. This reflects an apparent 30.7% loss in such facilities from the 10,423 reported in the 1989/90 statistical report. This change certainly does not reflect an actual loss of such facilities but is most likely a matter of the recent survey using a more restricted definition of this facility type. In the older data, it is likely that group picnic sites and informal sites or areas were included.

**Group Picnic Sites - A total of 209 facilities, as defined in Chapter 4 and determined by the survey described in Appendix B, existed in the System. No previous statistical report had data for group picnic sites, making it impossible to make comparisons between the data of different years.**

**Non-Motorized Trail Miles - A total of 3,734 miles, as defined in Chapter 4 and determined by the survey described in Appendix B, existed in the System. This is 19.8% or 617 miles more than that reported in the 1989/90 statistical report. These figures cannot be compared in a meaningful way because the earlier figures include trails used by off-road vehicles while the current ones do not. For many years, the round number of 3,000 miles was commonly cited for the collective length of System trails of all kinds.**

Visitor Attendance – Day Use - The record total of 78,619,687 day use visits included both those who paid an admission fee and those who were admitted free. Roughly three-quarters of all day use visits are unpaid or free. This total figure reflected a gain of 8.5% over the previous year and a 44.8% increase since 1990/91. The substantial increase in total day use from the previous year is almost certainly a reflection of the substantial reduction in visitor use fees which was phased in during the 2001/02 fiscal year.

Visitor Attendance – Camping - This figure reached a record total of 6,917,530 overnight uses, an increase of 8.3% over the previous year and a 28.8% increase since 1990/01. Since very few new individual or group campsites have been added to the System in the last decade, the substantial increase in camping attendance from the previous year is almost certainly a reflection of the

substantial reduction in visitor use fees which was phased in during the 2001/02 fiscal year. Note that the camping attendance contains only some of the overnight use of the system that takes place in structures, as explained in Appendix B. This situation makes it impossible to make a valid correlation between the total of overnight public use facilities and overnight visitor attendance.

Visitor Attendance – Total - This figure reached a record of 85,537,217, an increase of 8.5% over the previous year and a 43.3% increase since 1990/01. Most of this recent increase may be attributed to a substantial reduction in visitor use fees which was phased in during the 2001/02 fiscal year.

It should be noted that the System's unit-level attendance figures, with few exceptions, are based on estimates rather than actual counts. In addition, the total attendance for the System as a whole is substantially underestimated. The circumstances surrounding both of these factors are discussed as part of the definition of "visitor attendance", found in Chapter 4, below.

Revenue - User Fees - The total of \$31,028,871 reflects is 30.38% lower than the previous year, a substantial loss that occurred during a period with a considerable increase in visitor use. This is almost certainly due in large part to the reduction in visitor use fees discussed above. The 2001/02 figure is 33.95% lower than the figure for the 1990/91 fiscal year.

Revenue – Concessions - The total of \$11,645,371 reflects a reduction of 10.98% over the previous year. This may reflect a slowdown in the national and state economy, when people were in general less free in their spending. The 2001/02 figure is slightly higher (a gain of 0.46%) than that for the 1990/91 fiscal year, more than a decade earlier.

Revenue – Miscellaneous - The total of \$1,311,791 reflects a reduction of 87.39% over the previous fiscal year, and an 81.46% decline from the 1990/91 fiscal year.

Total Revenue - The System's total revenue of \$43,986,033 the sum of the above three categories, reflects a reduction of 35.53% from the prior fiscal year and 32.53% from the 1990/91 fiscal year. The three revenue categories listed above, based on the Department's "earnings", constitute an important part of the State Park and Recreation Fund (SPRF).

Operating Costs: The authorized base budget for field operations was a total of \$141,634,400, an increase of 2.9% over the previous year. The unavailability of earlier data makes a ten-year comparison impossible (see Appendix A, Section 5).

Revenue as a % of Operating Costs - In the 2001/02 fiscal year, the total revenue was 31.1% of the field operating costs for the System as a whole, 34.1% if the OHMVR districts are not included. Among the 23 individual non-OHMVR districts, the district figure ranges from a low of 9.3% to a high of 66.0%, with a median figure of 26.6%. In this group, seven districts are under 20% and four are over 50%.

Authorized Permanent Full-Time Positions - The total of 1874.9 positions for the 2001/02 fiscal year reflected an increase of 7.76% over the previous year and 12.0% over the figure for 1990/91.

Authorized Temporary Positions - In terms of person-year (PY) equivalents, a total of 819.7 positions reflected an increase of 3.67% over the previous year and a decrease of 0.93% over the figure for 1990/91.

This page intentionally left blank.

# CHAPTER 2

## Park System Size and Scope

This page intentionally left blank.



## CHAPTER 2

### PARK SYSTEM SIZE AND SCOPE

At the beginning of and during the entire 2001/02 fiscal year, beginning on July 1, 2001, the State Park System consisted of 266 properties. Of these, 250 were units that have been classified. The other 16 were major unclassified properties for which classification as distinct new units could be anticipated at some future date. All of these specific units and properties are identified by name on Lists 1 and 2 of the July 1, 2001 edition of the publication *Planning Milestones for the Park Units and Major Properties of the California State Park System*. The number and distribution of these properties, by classification, is as follows:

State Park	82
State Beach	64
State Historic Park	47
State Recreation Area	31
State Reserve	16
State Vehicular Recreation Area	8
State Historical Monument	1
Wayside Campground	1
State Seashore	<u>0</u>
Classified Units	250
Major Unclassified Properties	<u>16</u>
Total – State Park System	266

The California Resources Code, Sections 5019.50 *et seq*, describes and characterizes each of the nine classifications listed above. The code indicates in general terms the types of features and general qualities inherent in a unit that is given a particular classification, and also provides guidance as to the sort of management to be accorded to such a unit.

State Vehicular Recreation Areas are technically part of the State Vehicular Recreation and Trails System which, by legislation, is organizationally separate from the State Park System. For this reason, much of the data for the two systems are collected and initially kept separately. The data for the two systems is brought together for the purposes of this report.

Located within and being an integral part of many of the System's 250 units with the classifications indicated above, there existed an additional 79 units which were identified by three other classifications. These other classifications call for

enhanced, specialized protection and management for the noteworthy features or qualities found in the unit in question. Commonly termed “internal units”, and found on List 3 of the annual *Planning Milestones* publication, the number and distribution of these units, by classification, is as follows:

Cultural Preserve	13
Natural Preserve	57
State Wilderness	<u>9</u>
Total – Internal Units	79

State Wilderness units, in addition to being part of the State Park System, are part of a larger California Wilderness Preservation System, as defined in Public Resources Code Section 5093.3.

In addition to the lands noted above, which constitute the official State Park System, the Department of Parks and Recreation owns a number of small or minor properties that are not related to any of the System’s classified units or major unclassified properties. Information on these minor System properties appears in Appendix C, below.

The System’s 266 classified units and major unclassified properties are administered through districts, groupings based on their geographic proximity. Larger districts are often subdivided for management purposes into smaller areas called sectors. During the 2001/02 fiscal year, the units and properties of the State Park System were administered through 28 districts (5 of them being OHMVR districts managing the units classified as SVRAs). The 23 non-OHMVR districts contained, collectively, a total of 60 sectors.

It is important to note the manner in which any change in the size or composition of the State Park System is officially determined, a matter alluded to in this report’s Introduction. Because the state Park and Recreation Commission may name and classify any property at any of its meetings, and new properties may come into system ownership at any time during the year, the size of the State Park System may change at any time over the course of a fiscal year. To transform this natural periodic fluctuation to an administratively useful once-a-year change, the Department has adopted a convention which deems the System to have a single size and composition, unchanging over the course of an entire fiscal year.

By this convention, the size and composition of the State Park System is changed only once a year, on each July 1. To accomplish this, the changes that have been made during a year, as well as candidates for changes still needed to be made in updating the System’s official list of units and properties, are all identified in late June.

These changes can include the addition, removal or combining of specific units or properties. They can include changes of unit or property names, and changes in unit classifications. Such changes, both already accomplished or proposed, are discussed in late June of each year by the Department's Planning Policy and Programming Committee. Its recommendations for desirable changes are submitted at the end of the fiscal year to the Director for approval. Those changes which are approved by the Director become official on July 1. These changes modify the existing set of State Park System units and properties and the new official set for the next fiscal year appears in that year's July 1 edition of the Department's annual *Planning Milestones* publication.

Changes in the State Park System's set of districts, their boundaries or names, are the result of administrative decisions, proposals for which are approved by the Deputy Director of Park Operations and the Director of the Department of Parks and Recreation. Such changes may be made at any point in the fiscal year. The same is true for changes made in the boundaries of the sectors within districts. The districts and sectors reported in this statistical report and shown on its accompanying map are those that were in place on June 30, 2002, at the end of the 2001/02 fiscal year.

This page intentionally left blank.

# CHAPTER 3

## Basic Park System Statistics

This page intentionally left blank.

## CHAPTER 3

### BASIC PARK SYSTEM STATISTICS

The following set of foldout pages present a single table which contains data providing the basic statistics which measure selected aspects of the scale, activity and operation of the California State Park System during the 2001/02 fiscal year. The categories of data found in this table as shown in its column headings, are very similar to those used in the Department's earlier annual statistical reports and their predecessor documents, starting in the 1960s.

In this table, the individual districts of the basic State Park System, as they existed at the end of the 2001/02 fiscal year, are presented alphabetically and, within each district, its sectors are arranged alphabetically. When classified units and major unclassified properties are managed out of a district office, that district office is - for the purpose of this report only - considered a *de facto* sector. Within each sector, the units and properties are listed alphabetically. Internal classified units do not appear in this table, to avoid the double counting that would result in including their statistics along with those for the unit in which they are located. Basic information on these units appears in Appendix C.

Next, the five districts of the Off-Highway Motor Vehicle Recreation Division are presented in alphabetical order, followed by a subtotal for their data. The data for every district is summarized in a subtotal. The 23 districts in the basic system and the 5 in the OHMVR system are aggregated into two larger subtotals. Finally, the table's last row provides grand totals for the entire State Park System.

The names of the classified units are followed immediately by their classifications, in abbreviated form. The names of the major unclassified projects appear as names only, without being otherwise indicated by a word like project or property.

Approximately three dozen units and properties in the System are operated not by the state but instead by local government park agencies or by non-profit organizations, acting through individual operating agreements with the Department. The names of these units and properties appear in *Italics*. Their acreage data is included in System's subtotals and totals, but in many cases there is no available information on their facilities, visitor attendance, operation costs, and the like.

For certain of those units and properties which are operated by the State Park System, no attendance is reported. These are usually small, isolated, little developed and little visited units where counting visitors or collecting entrance fees would not justify the costs of doing so.

Most of the data in the table is available and reported on the basis of the individual unit or property. However, in cases of data on such topics as operating cost and staffing, the reported data is of the allocations of these resources made by headquarters to the district. This allows the district to be flexible in allocating (and reallocating) its funds to its sectors and individual units in the course of the year. Therefore, there are no unit-level allocations shown in these categories. Also, in the case of revenues, some of these monies come not into individual units but instead into the district or sector offices, and are recorded as district or sector income rather than unit income.

Some of the categories of information in this chapter's table, which appear as column headings, contain data which is current as of either the beginning or the end of the fiscal year. The remainder of the data categories reflects activity which occurs during the course of the year between the first and last day.

Categories with data which are current as of the first day of the fiscal year, July 1, are those which define the State Park System for the entire year. This information corresponds exactly with that found in Lists 1 and 2 of edition of the publication *Planning Milestones for the Park Units and Major Unclassified Properties of the California State Park System* which is dated July 1 of the same year. These categories are:

- Unit name and classification, or name of the major unclassified property
- Unit number
- County or counties in which the unit or property is located

The following categories of information in the table show what is valid or in place as of the last day of the fiscal year, June 30. These categories are:

- District name
- Sector name
- Acreage - state owned
- Acreage - other
- Waterfront feet (000) – separated into lake (“L”), ocean (“O”) and river (“R”)
- Public use facilities - individual camp sites
- Public use facilities - group camp sites
- Public use facilities - non-camping overnight facilities
- Public use facilities - individual picnic sites
- Public use facilities - group picnic sites
- Public use facilities - non-motorized trail miles

The last categories of information indicate activity undertaken, revenue generated, or resources expended over the 365-day course of the year, from July 1 through June 30. These categories are:



- Visitor attendance - day use
- Visitor attendance - camping
- Revenue - user fees
- Revenue - concessions
- Revenue – miscellaneous
- Revenue - total
- Operating costs
- Revenue as a percent of operating costs
- Authorized staffing levels - permanent full-time
- Authorized staffing levels - temporary, in PY (person-year) equivalents

Definitions of these data categories may be found in Chapter 4, below.

Three symbols which appear in the table, defined as follows, are used so as to leave no space or cell empty.

- A zero (“0”) is put in a space where there could be number, indicating that the actual number is zero.
- A dash (“-”) is put in a space where the appropriate information does not exist or is unavailable, either because it is not collected or because it is not computed for record-keeping purposes (e.g. the unit allocations of a lump-sum amount of district funding).
- A (“n/a”) indicates that there is no number in this space because such a number would not be appropriate, being a meaningless computation.

This page intentionally left blank.

**UNITS AND PROPERTIES OF THE CALIFORNIA STATE PARK SYSTEM**

Fiscal Year 2001/02

DISTRICT/Sector/Park Unit	Unit No.	County	ACREAGE			Waterfront Feet (000)	PUBLIC USE FACILITIES					VISITOR ATTENDANCE			REVENUE				Authorized Base Budget		Authorized Staffing Levels	
			DPR Owned	Other			Individual Camp Sites	Group Camp Sites	Non-Camping Overnight Facilities	Individual Picnic Sites	Group Picnic Sites	Non-Motor. Trail Miles	Day Use	Camping	Total	User Fees	Concessions	Misc.	Total	Operating Costs (\$)	Revenue as % of Oper. Cost	Perm Full Time
<b>ANGELES DISTRICT</b>																			<b>ANGELES DISTRICT</b>			
<b>Angeles District HQ Office</b>													\$9,281	\$275	\$24,536	\$34,093	\$7,304,714	n/a	99.8	37.4		
<b>Southern Division Office (*)</b>													\$0	\$0	\$0	\$0	-	-	-	-		
<i>Castaic Lake SRA</i>	569	LA	0.0	4,200.2	218.9 L	60	2	0	1,000	4	3.4	-	-	-	\$0	\$0	\$0	\$0	-	-	-	-
<i>Dockweiler SB</i>	541	LA	91.4	0.0	19.8 O	118	0	0	0	0	0.0	-	-	-	\$0	\$0	\$0	\$0	-	-	-	-
<i>Placerita Canyon SP</i>	552	LA	341.7	0.0	0.0	0	3	0	6	3	5.6	-	-	-	\$0	\$0	\$0	\$0	-	-	-	-
<i>Santa Monica SB</i>	557	LA	27.2	21.3	10.0 O	0	0	0	0	0	2.0	-	-	-	\$0	\$0	\$0	\$0	-	-	-	-
<i>Watts Towers of Simon Rodia SHP</i>	518	LA	0.1	0.0	0.0	0	0	0	0	0	0.0	-	-	-	\$0	\$0	\$0	\$0	-	-	-	-
<i>Will Rogers SB</i>	558	LA	82.1	0.0	16.6 O		0	0	0	0	0.0	-	-	-	\$0	\$0	\$0	\$0	-	-	-	-
<b>Malibu Sector</b>													\$1,004	-\$1,899	\$36,360	\$35,464	-	-	-	-		
Leo Carrillo SP	540	LA VEN	2,333.4	2.5	13.1 O	136	1	0	4	0	7.6	371,577	160,325	531,902	\$415,050	\$31,098	\$121	\$446,268	-	-	-	-
Malibu Creek SP	537	LA	7,778.7	63.9	0.0	62	1	0	15	0	30.1	648,183	165,044	813,227	\$179,086	\$1,088	\$1,083	\$181,257	-	-	-	-
<i>Malibu Lagoon SB</i>	548	LA	157.7	0.0	3.5 O	0	0	0	0	0	1.0	745,051	0	745,051	\$53,065	\$0	\$0	\$53,065	-	-	-	-
<i>Point Dume SB</i>	553	VEN	31.9	0.0	11.1 O	0	0	0	0	0	0.5	266,968	0	266,968	\$0	-\$340	\$0	-\$340	-	-	-	-
Point Mugu SP	535	VEN	13,925.2	21.5	19.2 O	139	2	0	27	0	68.8	213,021	134,988	348,009	\$259,109	\$1,407	\$89,367	\$349,883	-	-	-	-
Robert H. Meyer Memorial SB	590	LA	37.0	0.0	2.3 O	0	0	0	6	0	0.9	559,892	0	559,892	\$20	\$0	\$0	\$20	-	-	-	-
<b>Mojave Sector</b>													\$255	\$19	\$3,851	\$4,126	-	-	-	-		
Antelope Valley CA Poppy Preserve SR	560	LA	1,776.4	0.0	0.0	0	0	0	6	0	6.1	11,380	0	11,380	\$0	\$56	\$0	\$56	-	-	-	-
Antelope Valley Indian Museum	579	LA	147.3	0.0	0.0	0	0	0	10	0	1.0	8,418	0	8,418	\$3,966	\$897	\$12	\$4,875	-	-	-	-
Arthur B. Ripley Desert Woodland SP	595	LA	566.1	0.0	0.0	0	0	0	1	0	0.5	2,752	0	2,752	\$0	\$0	\$0	\$0	-	-	-	-
Providence Mountains SRA	538	SBD	5,890.5	0.0	0.0	6	0	0	2	0	1.8	9,772	2,128	11,900	\$21,564	\$952	\$389	\$22,904	-	-	-	-
Red Rock Canyon SP	577	KER	15,608.5	8,886.1	0.0	50	0	0	6	0	1.7	226,106	21,333	247,439	\$40,945	\$0	\$0	\$40,945	-	-	-	-
Saddleback Butte SP	543	LA	2,874.9	78.9	0.0	50	1	0	35	0	7.5	5,193	2,692	7,885	\$5,980	\$0	\$0	\$5,980	-	-	-	-
Tomo-Kahni	368	KER	240.0	0.0	0.0	0	0	0	0	0	1.0	194	0	194	\$286	\$0	\$0	\$286	-	-	-	-
<b>Topanga Sector</b>													\$0	\$238	\$147	\$386	-	-	-	-		
<i>Kenneth Hahn SRA</i>	516	LA	367.7	0.0	0.0	0	0	0	14	0	9.0	-	-	-	\$0	\$0	\$0	\$0	-	-	-	-
Los Encinos SHP	546	LA	4.7	0.0	0.0	0	0	0	3	1	0.0	0	0	0	\$300	\$0	\$0	\$300	-	-	-	-
Pío Pico SHP	551	LA	1.1	2.3	0.0	0	0	0	0	0	0.0	0	0	0	\$0	\$0	\$51	\$51	-	-	-	-
Santa Susana Pass SHP	505	LA	670.7	0.0	0.0	0	0	0	0	0	0.0	28,941	0	28,941	\$0	\$0	\$500	\$500	-	-	-	-
Topanga SP	572	LA	12,330.9	10.8	0.0	8	0	0	10	1	36.3	518,503	496	518,999	\$23,189	\$588,802	\$3,657	\$615,648	-	-	-	-
Verdugo Mountains	597	LA	251.4	0.0	0.0	0	0	0	0	0	10.0	2,995	0	2,995	\$0	\$0	\$0	\$0	-	-	-	-
Will Rogers SHP	559	LA	189.1	0.0	0.0	0	0	0	1	1	5.0	358,825	0	358,825	\$137,446	\$0	\$6	\$137,452	-	-	-	-
<b>ANGELES DISTRICT TOTALS</b>			65,725.8	13,287.3	218.9 L 95.6 O	629	10	0	1,146	10	199.8	3,977,771	487,006	4,464,777	\$1,150,545	\$622,593	\$160,082	\$1,933,220	\$7,304,714	26.5%	99.8	37.4

(\*) The Central and Northern Division offices are located at the Sacramento headquarters.

This page intentionally left blank.

**UNITS AND PROPERTIES OF THE CALIFORNIA STATE PARK SYSTEM**

Fiscal Year 2001/02

DISTRICT/Sector/Park Unit	Unit No.	County	ACREAGE			Waterfront Feet (000)	PUBLIC USE FACILITIES					VISITOR ATTENDANCE			REVENUE				Authorized Base Budget		Authorized Staffing Levels	
			DPR Owned	Other			Individual Camp Sites	Group Camp Sites	Non-Camping Overnight Facilities	Individual Picnic Sites	Group Picnic Sites	Non-Motor. Trail Miles	Day Use	Camping	Total	User Fees	Concessions	Misc.	Total	Operating Costs (\$)	Revenue as % of Oper. Cost	Perm Full Time
<b>BAY AREA DISTRICT</b>																			<b>BAY AREA DISTRICT</b>			
<b>Bay Area District HQ Office</b>																			<b>BAY AREA DISTRICT</b>			
Año Nuevo SP	222	SM	2,896.0	0.0	0.0	0	0	0	0	0	0.0	0	0	0	\$-86	\$427	\$7,436	\$7,776	\$4,348,035	n/a	61.0	21.6
Año Nuevo SR	228	SM	1,313.0	5.9	42.7 O	0	0	0	4	0	1.8	140,332	0	140,332	\$168,929	\$0	\$101	\$169,030	-	-	-	-
Bean Hollow SB	266	SM	44.0	0.0	9.8 O	0	0	0	4	0	1.2	196,705	0	196,705	\$0	\$0	\$0	\$0	-	-	-	-
Burleigh H. Murray Ranch	285	SM	1,325.5	0.0	0.0	0	0	0	0	0	1.6	21,133	0	21,133	\$0	\$0	\$0	\$0	-	-	-	-
Butano SP	423	SM	4,116.5	0.4	0.0	43	0	0	10	0	26.1	54,943	13,532	68,475	\$58,098	\$225	\$164	\$58,487	-	-	-	-
Candlestick Point SRA	214	SF	204.9	0.0	3.9 O	0	0	0	23	3	1.8	85,076	0	85,076	\$16,425	\$524,798	\$0	\$541,223	-	-	-	-
Gray Whale Cove SB	270	SM	3.1	0.0	0.4 O	0	0	0	0	0	0.0	61,612	0	61,612	\$0	\$0	\$0	\$0	-	-	-	-
Half Moon Bay SB	277	SM	180.7	0.2	13.2 O	55	1	0	17	0	4.7	1,338,792	55,878	1,394,670	\$283,480	\$10,200	\$673	\$294,353	-	-	-	-
Lake Del Valle SRA	764	ALA	387.3	3,344.6	103.0 L	168	6	0	200	13	26.9	-	-	-	\$0	\$0	\$0	\$0	-	-	-	-
Montara SB	278	SM	773.5	6.8	12.5 O	0	0	0	0	0	8.3	107,344	0	107,344	\$0	\$0	\$0	\$0	-	-	-	-
Pacifica SB	230	SM	20.7	0.0	1.9 O	0	0	0	0	0	0.0	-	-	-	\$0	\$0	\$0	\$0	-	-	-	-
Pescadero SB	227	SM	664.9	34.9	9.8 O	0	0	0	0	0	0.0	354,736		354,736	\$0	\$0	\$0	\$0	-	-	-	-
Pigeon Point Light Station SHP	281	SM	0.0	12.0	0.5 O	0	0	3	0	0	0.1	40,403	3,785	44,188	\$11,159	\$0	\$0	\$11,159	-	-	-	-
Point Montara Light Station	282	SM	0.0	6.0	0.0	0	0	3	0	0	0.0	0	0	0	\$0	\$0	\$0	\$0	-	-	-	-
Pomponio SB	226	SM	420.6	0.0	11.8 O	0	0	0	10	0	0.0	162,904	0	162,904	\$4,420	\$0	\$0	\$4,420	-	-	-	-
Robert W. Crown Memorial SB	258	ALA	132.2	0.0	7.8 O	0	0	0	35	7	5.1	-	-	-	\$0	\$0	\$0	\$0	-	-	-	-
San Bruno Mountain SP	205	SM	297.6	0.0	0.0	0	0	0	8	0	6.4	-	-	-	\$0	\$0	\$0	\$0	-	-	-	-
San Gregorio SB	273	SM	171.6	0.0	4.9 O	0	0	0	11	0	0.0	354,205	0	354,205	\$46,588	\$0	\$173	\$46,761	-	-	-	-
Thornton SB	275	SM	58.0	0.0	3.2 O	0	0	0	0	0	0.0	0	0	0	\$0	\$0	\$0	\$0	-	-	-	-
<b>Diablo Sector</b>																			<b>BAY AREA DISTRICT</b>			
East Shore Park	220	ALA CC	387.2	55.0	8.1 O	0	0	0	0	0	10.2	0	0	0	\$0	\$0	\$0	\$0	-	-	-	-
John Marsh Home	254	CC	13.0	3.7	0.8 R	0	0	0	0	0	0.0	0	0	0	\$0	\$0	\$0	\$0	-	-	-	-
Mount Diablo SP	203	CC	16,676.0	0.0	0.0	64	5	0	15	3	133.0	551,548	16,858	568,406	\$192,369	\$530,291	\$32,183	\$754,842	-	-	-	-
<b>BAY AREA DISTRICT TOTALS</b>					103.0 L																	
					130.5 O	330	12	6	337	26	227.2	3,469,733	90,053	3,559,786	\$781,382	\$1,065,513	\$40,804	\$1,887,700	\$4,348,035	43.4%	61.0	21.6
					0.8 R																	

This page intentionally left blank.

**UNITS AND PROPERTIES OF THE CALIFORNIA STATE PARK SYSTEM**

Fiscal Year 2001/02

DISTRICT/Sector/Park Unit	Unit No.	County	ACREAGE			PUBLIC USE FACILITIES						VISITOR ATTENDANCE			REVENUE				Authorized Base Budget		Authorized Staffing Levels				
			DPR Owned	Other	Waterfront Feet (000)	Individual Camp Sites	Group Camp Sites	Non-Camping Overnight Facilities	Individual Picnic Sites	Group Picnic Sites	Non-Motor. Trail Miles	Day Use	Camping	Total	User Fees	Concessions	Misc.	Total	Operating Costs (\$)	Revenue as % of Oper. Cost	Perm Full Time	Temp PY Equiv.			
<b>CALAVERAS DISTRICT</b>																									
<b>Calaveras District HQ Office</b>																		\$1	\$17,612	\$64	\$17,676	\$1,784,000	n/a	27.0	6.4
Calaveras Big Trees SP	306	CAL TUO	6,497.1	0.0	26.4 R	136	2	0	30	1	50.0	112,856	47,551	160,407	\$179,848	\$244	\$1,593	\$181,685	-	-	-				
Columbia SHP	307	TUO	251.6	20.6	0.0	0	0	2	25	0	0.5	585,907	0	585,907	\$1,461	\$244,423	\$1,490	\$247,374	-	-	-				
Indian Grinding Rock SHP	373	AMA	135.4	0.0	0.0	24	0	6	1	1	1.5	35,847	10,624	46,471	\$27,455	\$800	\$0	\$28,255	-	-	-				
<b>CALAVERAS DISTRICT TOTALS</b>			6,884.1	20.6	26.4 R	160	2	8	56	2	52.0	734,610	58,175	792,785	\$208,765	\$263,079	\$3,146	\$474,990	\$1,784,000	26.6%	27.0	6.4			
<b>CAPITAL DISTRICT</b>																									
<b>Capital District HQ Office</b>																		\$0	\$0	\$4,039	\$4,039	\$6,605,328	n/a	85.2	31.9
<b>Capital Sector</b>																		\$0	\$0	\$0	\$0	-	-	-	-
California State Capitol Museum	357	SAC	0.0	0.0	0.0	0	0	0	0	0	0.0	523,065	0	523,065	\$0	\$0	\$0	\$0	-	-	-				
<b>Historic Sites Sector</b>																		\$63,027	\$0	\$0	\$63,027	-	-	-	-
Governor's Mansion SHP	377	SAC	0.8	0.0	0.0	0	0	0	0	0	0.0	86,232	0	86,232	\$5,329	\$0	\$0	\$5,329	-	-	-				
Leland Stanford Mansion SHP	328	SAC	0.9	0.0	0.0	0	0	0	0	0	0.0	0	0	0	\$0	\$0	\$0	\$0	-	-	-				
State Indian Museum (SHP)	309	SAC	0.0	0.0	0.0	0	0	0	0	0	0.0	47,299	0	47,299	\$6,977	\$0	\$0	\$6,977	-	-	-				
Sutter's Fort SHP	308	SAC	0.0	0.0	0.0	0	0	0	0	0	0.0	202,148	0	202,148	\$19,009	\$0	\$0	\$19,009	-	-	-				
Woodland Opera House SHP	327	YOL	0.3	0.0	0.0	0	0	0	0	0	0.0	-	-	-	\$0	\$0	\$0	\$0	-	-	-				
<b>Railroad Sector</b>																		\$462,935	\$38,077	\$307	\$501,318	-	-	-	-
Old Sacramento SHP	372	SAC	293.3	1.0	1.1 R	0	0	0	0	0	0.0	537,381	0	537,381	\$12,507	\$0	\$4	\$12,511	-	-	-				
Railtown 1897 SHP	335	TUO	20.0	0.0	0.0	0	0	0	0	0	0.0	47,299	0	47,299	\$0	\$0	\$0	\$0	-	-	-				
<b>CAPITAL DISTRICT TOTALS</b>			315.2	1.0	1.1 R	0	0	0	0	0	0.0	1,443,424	0	1,443,424	\$569,784	\$38,077	\$4,349	\$612,210	\$6,605,328	9.3%	85.2	31.9			
<b>CHANNEL COAST DISTRICT</b>																									
<b>Channel Coast District HQ Office</b>																		\$2,603	\$1,029	\$18,134	\$21,766	\$5,585,754	n/a	74.0	41.6
El Presidio de Santa Barbara SHP	575	SB	4.5	0.0	0.0	0	0	0	0	0	0.0	-	-	-	\$0	\$0	\$0	\$0	-	-	-				
Mandalay SB	676	VEN	92.1	0.0	2.9 O	0	0	0	0	0	0.0	0	0	0	\$0	\$0	\$0	\$0	-	-	-				
<b>Carpinteria Sector</b>																		\$0	\$0	\$0	\$0	-	-	-	-
Carpinteria SB	514	SB VEN	62.3	0.0	4.7 O	262	2	0	20	2	0.0	474,913	397,992	872,905	\$829,828	\$10,571	\$3,417	\$843,816	-	-	-				
<b>Gaviota Sector</b>																		\$0	\$0	\$0	\$0	-	-	-	-
Chumash Painted Cave SHP	525	SB	7.5	0.0	0.0	0	0	0	0	0	0.1	0	0	0	\$0	\$0	\$0	\$0	-	-	-				
El Capitan SB	519	SB	134.0	0.0	9.8 O	141	4	0	19	0	2.9	93,801	116,756	210,557	\$388,269	\$23,729	\$1,042	\$413,040	-	-	-				
Gaviota SP	542	SB	2,738.0	4.2	32.0 O	40	0	0	0	0	8.0	115,271	29,951	145,222	\$90,043	\$14,279	\$0	\$104,322	-	-	-				
Refugio SB	527	SB	155.1	750.0	33.1 O	81	1	0	52	0	1.8	109,211	87,234	196,445	\$289,094	\$24,577	\$1,581	\$315,251	-	-	-				
<b>La Purisima Sector</b>																		\$11,962	\$0	\$0	\$11,962	-	-	-	-
La Purisima Mission SHP	513	SB	1,934.3	0.0	0.0	0	0	0	10	0	29.0	178,380	0	178,380	\$21,699	\$0	\$0	\$21,699	-	-	-				
Point Sal SB	535	SB	84.0	0.0	8.8 O	0	0	0	0	0	0.0	0	0	0	\$0	\$0	\$0	\$0	-	-	-				
<b>Ventura Sector</b>																		\$0	\$0	\$0	\$0	-	-	-	-
Emma Wood SB	530	VEN	109.2	2.7	16.2 O 1.6 R	98	5	0	8	0	3.1	89,973	74,007	163,980	\$157,906	\$0	\$21	\$157,927	-	-	-				
McGrath SB	515	VEN	109.1	1.0	11.4 O	175	1	0	0	0	0.8	321,872	0	321,872	\$256,483	\$6,586	\$137	\$263,207	-	-	-				
San Buenaventura SB	567	VEN	312.4	2.1	13.4 O	0	0	0	165	0	1.1	45,462	137,425	182,887	\$77,161	\$3,598	\$453	\$81,212	-	-	-				
<b>CHANNEL COAST DISTRICT TOTALS</b>			5,742.5	759.9	132.3 O 1.6 R	797	13	0	274	2	46.8	1,428,883	843,365	2,272,248	\$2,125,048	\$84,369	\$24,784	\$2,234,202	\$5,585,754	40.0%	74.0	41.6			

This page intentionally left blank.



**UNITS AND PROPERTIES OF THE CALIFORNIA STATE PARK SYSTEM**

Fiscal Year 2001/02

DISTRICT/Sector/Park Unit	Unit No.	County	ACREAGE		Waterfront Feet (000)	PUBLIC USE FACILITIES					VISITOR ATTENDANCE			REVENUE				Authorized Base Budget		Authorized Staffing Levels					
			DPR Owned	Other		Individual Camp Sites	Group Camp Sites	Non-Camping Overnight Facilities	Individual Picnic Sites	Group Picnic Sites	Non-Motor. Trail Miles	Day Use	Camping	Total	User Fees	Concessions	Misc.	Total	Operating Costs (\$)	Revenue as % of Oper. Cost	Perm Full Time	Temp PY Equiv.			
<b>COLORADO DESERT DISTRICT</b>																						<b>COLORADO DESERT DISTRICT</b>			
<b>Colorado Desert District HQ Office</b>													\$0	-\$34	\$3,602	\$3,568	\$5,499,751	n/a	68.3	33.5					
<b>Anza-Borrego Sector</b>													\$0	\$0	\$0	\$0	-	-	-	-					
Anza-Borrego Desert SP	622	IMP RIV SD	572,119.4	0.0	0.0	270	5	0	10	4	696.0	383,243	159,352	542,595	\$230,897	\$4,235	\$234,916	\$470,047	-	-	-	-			
<b>Montane Sector</b>													-\$39		\$75	\$37	-	-	-	-					
Cuyamaca Rancho SP	618	SD	24,614.7	0.0	0.0	190	3	7	127	0	166.0	486,572	161,094	647,666	\$324,339	\$6,676	\$263	\$331,279	-	-	-	-			
Palomar Mountain SP	617	SD	1,908.5	0.0	0.0	32	3	0	36	0	12.8	44,712	77,637	122,349	\$69,941	\$51,319	\$92	\$121,353	-	-	-	-			
<b>Salton Sea Sector</b>													\$0	-\$173	\$87	-\$85	-	-	-	-					
Indio Hills Palms	646	RIV	2,206.0	0.0	0.0	0	0	0	0	0	2.0	3,603	0	3,603	\$0	\$0	\$0	\$0	-	-	-	-			
Picacho SRA	658	IMP	510.6	6,248.0	7.2 L 44.0 R	64	5	0	5	3	3.0	54,781	25,271	80,052	\$31,858	\$176	\$47	\$32,080	-	-	-	-			
Salton Sea SRA	623	IMP RIV	3,304.1	13,596.9	95.0 L	1,659	0	0	50	2	1.0	202,083	26,065	228,148	\$91,402	\$5,435	\$37	\$96,874	-	-	-	-			
<b>San Jacinto Sector</b>													\$0	-\$299	\$0	-\$299	-	-	-	-					
Mount San Jacinto SP	616	RIV	13,718.0	0.0	0.0	85	0	0	8	0	35.5	387,996	34,551	422,547	\$50,500	\$279,696	\$318	\$330,513	-	-	-	-			
<b>COLORADO DESERT DISTRICT TOTALS</b>			618,381.2	19,844.9	102.2 L 44.0 R	2,300	16	7	236	9	916.3	1,562,990	483,970	2,046,960	\$798,899	\$347,032	\$239,437	\$1,385,368	\$5,499,751	25.2%	68.3	33.5			
<b>FOUR RIVERS DISTRICT</b>																						<b>FOUR RIVERS DISTRICT</b>			
<b>Four Rivers District HQ Office</b>													\$0	\$418	\$6,138	\$6,556	\$3,399,292	n/a	49.7	17.6					
<b>Coe Sector</b>													\$0	\$0	\$0	\$0	-	-	-	-					
Henry W. Coe SP	432	SCL STA	86,416.0	153.5	0.0	102	18	0	0	0	293.6	63,553	13,593	77,146	\$33,122	\$3,006	\$1,040	\$37,169	-	-	-	-			
<b>North Sector</b>													\$0	\$0	\$100	\$100	-	-	-	-					
Bethany Reservoir SRA	744	ALA	0.0	608.5	29.4 L	0	0	0	8	0	2.0	21,564	0	21,564	\$6,749	\$0	\$0	\$6,749	-	-	-	-			
Caswell Memorial SP	316	SJ	258.1	0.0	24.4 R	63	1	0	24	1	4.5	23,347	23,538	46,885	\$61,202	\$98	\$436	\$61,736	-	-	-	-			
George J. Hatfield SRA	312	MER	46.5	0.0	7.3 R	10	1	0	10	0	1.2	15,452	3,263	18,715	\$6,676	\$0	\$96	\$6,773	-	-	-	-			
Great Valley Grasslands SP	352	MER	2,826.0	0.0	16.9 R	0	0	0	0	0	4.0	13,167	0	13,167	\$0	\$0	\$0	\$0	-	-	-	-			
McConnell SRA	310	MER	74.3	0.0	6.1 R	21	2	0	20	0	0.1	45,762	11,445	57,207	\$47,685	\$0	\$0	\$47,685	-	-	-	-			
Turlock Lake SRA	311	STA	0.0	3,558.8	12.0 L	64	0	0	50	0	1.0	54,081	19,629	73,710	\$69,027	\$0	\$147	\$69,174	-	-	-	-			
<b>South Sector</b>													\$0	\$0	\$0	\$0	-	-	-	-					
Pacheco SP	369	MER SCL	6,893.9	0.0	0.0	9	2	0	9	0	54.0	2,580	220	2,800	\$0	\$0	\$35,629	\$35,629	-	-	-	-			
San Luis Reservoir SRA	333	MER	0.0	26,035.7	480.5 L	192	2	0	150	4	5.0	469,478	44,618	514,096	\$206,043	\$11,767	\$685	\$218,496	-	-	-	-			
<b>FOUR RIVERS DISTRICT TOTALS</b>			96,514.8	30,356.5	521.9 L 54.7 R	461	26	0	271	5	365.4	708,984	116,306	825,290	\$430,505	\$15,289	\$44,272	\$490,066	\$3,399,292	14.4%	49.7	17.6			

This page intentionally left blank.

**UNITS AND PROPERTIES OF THE CALIFORNIA STATE PARK SYSTEM**

Fiscal Year 2001/02

DISTRICT/Sector/Park Unit	Unit No.	County	ACREAGE		Waterfront Feet (000)	PUBLIC USE FACILITIES					VISITOR ATTENDANCE			REVENUE				Authorized Base Budget		Authorized Staffing Levels		
			DPR Owned	Other		Individual Camp Sites	Group Camp Sites	Non-Camping Overnight Facilities	Individual Picnic Sites	Group Picnic Sites	Non-Motor. Trail Miles	Day Use	Camping	Total	User Fees	Concessions	Misc.	Total	Operating Costs (\$)	Revenue as % of Oper. Cost	Perm Full Time	Temp PY Equiv.
<b>GOLD FIELDS DISTRICT</b>																			<b>GOLD FIELDS DISTRICT</b>			
<b>Gold Fields District HQ Office</b>													\$28,254	\$99,169	\$37,062	\$164,485	\$6,534,175	n/a	101.4	33.8		
<b>Auburn SRA Sector</b>													\$0	\$0	\$0	\$0	-	-	-	-		
Auburn SRA	398	ED PLA	0.0	42,000.0	388.0 R	42	0	0	0	0	101.9	954,825	5,053	959,878	\$159,241	\$1,773	\$2,591	\$163,606	-	-	-	-
<b>Delta Sector</b>													\$42,653	\$6,532	\$0	\$49,185	-	-	-	-		
Brannan Island SRA	314	SAC	328.6	0.0	16.0 R	156	6	1	25	5	15.5	84,638	56,749	141,387	\$188,342	\$345	\$1,220	\$189,906	-	-	-	-
Delta Meadows	338	SAC	470.5	1.1	3.2 R	0	0	0	0	0	2.0	5,350	1,196	6,546	\$0	\$0	\$0	\$0	-	-	-	-
Franks Tract SRA	329	CC	3,522.8	0.2	8.0 R	0	0	0	0	0	0.0	13,198	0	13,198	\$0	\$0	\$0	\$0	-	-	-	-
Stone Lake	355	SAC	1,089.6	0.0	21.3 L	0	0	0	0	0	0.0	0	0	0	\$0	\$0	\$0	\$0	-	-	-	-
<b>Folsom Sector</b>													\$0	\$0	\$0	\$0	-	-	-	-		
Folsom Lake SRA	318	ED PLA SAC	2,199.4	17,318.8	686.4 L	169	3	0	300	3	180.0	1,758,331	80,900	1,839,231	\$1,020,298	\$20,538	\$2,051	\$1,042,888	-	-	-	-
Folsom Powerhouse SHP	370	SAC	18.7	16.3	0.0	0	0	0	4	0	0.0	1,115	0	1,115	\$0	\$0	\$0	\$0	-	-	-	-
<b>Gold Mines Sector</b>													\$25,475	\$161	\$378	\$26,013	-	-	-	-		
Empire Mine SHP	383	NEV	853.0	0.0	0.0	0	0	0	28	0	10.5	95,841	0	95,841	\$30,455	\$30	\$139	\$30,624	-	-	-	-
Malakoff Diggins SHP	356	NEV	3,142.9	0.0	2.6 L	30	1	3	3	1	12.5	12,750	13,221	25,971	\$17,944	\$0	\$63	\$18,008	-	-	-	-
South Yuba River SP	359	NEV	2,585.5	5,186.2	2.1 L 141.4 R	0	0	0	2	0	12.9	389,973	1,030	391,003	\$175	\$0	\$60	\$235	-	-	-	-
<b>Marshall Gold Sector</b>													\$78,044	\$16,620	\$55	\$94,719	-	-	-	-		
Marshall Gold Discovery SHP	304	ED	286.6	0.0	5.9 R	0	0	0	158	3	3.3	341,455	0	341,455	-\$625	\$0	\$0	-\$625	-	-	-	-
<b>GOLD FIELDS DISTRICT TOTALS</b>			14,497.6	64,522.6	712.4 L 562.5 R	397	10	4	520	12	338.5	3,657,476	158,149	3,815,625	\$1,590,256	\$145,169	\$43,620	\$1,779,044	\$6,534,175	27.2%	101.4	33.8
<b>INLAND EMPIRE DISTRICT</b>																			<b>INLAND EMPIRE DISTRICT</b>			
<b>Inland Empire District HQ Office</b>													\$0	\$0	\$31,190	\$31,190	\$7,577,546	n/a	119.0	45.2		
Lake Perris SRA	665	RIV	1,440.4	5,240.0	52.8 L	434	16	0	1,500	3	42.0	1,030,058	236,024	1,266,082	\$907,070	\$26,570	\$1,063	\$934,703	-	-	-	-
<b>Chino Sector</b>													\$5,026	\$0	\$0	\$5,026	-	-	-	-		
California Citrus SHP	570	RIV	247.5	0.0	0.0	0	0	0	8	1	2.5	160,382	0	160,382	-\$16	\$0	\$107	\$91	-	-	-	-
Chino Hills SP	508	ORA RIV SBD	12,536.5	0.0	0.0	10	1	0	5	1	60.5	122,897	2,612	125,509	\$4,534	\$0	\$0	\$4,534	-	-	-	-
<b>Silverwood Sector</b>													\$41,457	-\$1,097	\$0	\$40,359	-	-	-	-		
Silverwood Lake SRA	592	SBD	2,201.0	0.0	68.6 L	197	8	0	603	0	25.0	375,665	115,384	491,049	\$300,670	\$22,508	\$2,264	\$325,442	-	-	-	-
<b>INLAND EMPIRE DISTRICT TOTALS</b>			16,425.4	5,240.0	121.4 L	641	25	0	2,116	5	130.0	1,689,002	354,020	2,043,022	\$1,258,740	\$47,980	\$34,625	\$1,341,345	\$7,577,546	17.7%	119.0	45.2

This page intentionally left blank.

**UNITS AND PROPERTIES OF THE CALIFORNIA STATE PARK SYSTEM**

Fiscal Year 2001/02

DISTRICT/Sector/Park Unit	Unit No.	County	ACREAGE			PUBLIC USE FACILITIES						VISITOR ATTENDANCE			REVENUE				Authorized Base Budget		Authorized Staffing Levels																
			DPR Owned	Other	Waterfront Feet (000)	Individual Camp Sites	Group Camp Sites	Non-Camping Overnight Facilities	Individual Picnic Sites	Group Picnic Sites	Non-Motor. Trail Miles	Day Use	Camping	Total	User Fees	Concessions	Misc.	Total	Operating Costs (\$)	Revenue as % of Oper. Cost	Perm Full Time	Temp PY Equiv.															
<b>MARIN DISTRICT</b>																			<b>MARIN DISTRICT</b>																		
<b>Marin District HQ Office</b>																			\$253	\$2,008	\$8,610	\$10,871	\$3,672,500	n/a	53.0	18.1											
China Camp SP	202	MRN	1,514.3	0.0	8.5 O	31	0	0	58	1	20.2	442,624	21,173	463,797	\$55,123	\$2,707	\$3,233	\$61,062	-	-	-	-															
Marconi Conference Center SHP	213	MRN	62.4	0.0	2.9 O	0	0	40	0	0	2.0	-	-	-	\$0	\$0	\$0	\$0	-	-	-	-															
Mount Tamalpais SP	239	MRN	6,212.0	31.0	11.8 O	23	3	10	3	4	50.5	1,497,439	26,384	1,523,823	\$120,227	\$4,594	\$2,946	\$127,766	-	-	-	-															
Olompali SHP	201	MRN	700.0	0.0	0.0	0	0	0	17	0	4.5	59,475	0	59,475	\$0	\$0	\$0	\$0	-	-	-	-															
Samuel P. Taylor SP	233	MRN	2,615.0	92.2	0.0	61	3	0	45	2	31.8	73,407	68,733	142,140	\$170,899	\$0	\$1,368	\$172,267	-	-	-	-															
Tomales Bay SP	237	MRN	2,261.8	8.2	17.9 O	0	0	0	47	1	7.8	83,529	1,650	85,179	\$16,419	\$0	\$0	\$16,419	-	-	-	-															
<b>Angel Island Sector</b>																			\$0	\$0	\$0	\$0	-	-	-	-											
Angel Island SP	231	MRN SF	737.9	17.8	23.0 O	30		0	45	4	16.0	175,128	15,422	190,550	\$115,896	\$201,729	\$84	\$317,709	-	-	-	-															
<b>MARIN DISTRICT TOTALS (a)</b>			14,103.3	149.3	64.1 O	145	6	50	215	12	132.8	2,331,602	133,362	2,464,964	\$478,816	\$211,038	\$16,241	\$706,095	\$3,672,500	19.2%	53.0	18.1															

(a) The Marin District visitor attendance totals for this on-line version of the Statistical Report have been adjusted to correct an accidental doubling of visitor attendance figures that appeared in the printed version.

<b>MENDOCINO DISTRICT</b>																			<b>MENDOCINO DISTRICT</b>																		
<b>Mendocino District HQ Office</b>																			-\$7	-\$1,065	\$0	-\$1,072	\$2,355,502	n/a	35.0	14.7											
Caspar Headlands SB	161	MEN	3.0	0.0	0.4 O	0	0	0	0	0	1.5	10,321	0	10,321	\$0	\$0	\$0	\$0	-	-	-	-															
Caspar Headlands SR	160	MEN	2.7	0.0	2.4 O	0	0	0	0	0	0.1	2,985	0	2,985	\$0	\$0	\$0	\$0	-	-	-	-															
Greenwood SB	165	MEN	47.2	0.0	1.5 O	0	0	0	4	0	0.8	63,090	0	63,090	\$0	\$0	\$0	\$0	-	-	-	-															
Hendy Woods SP	148	MEN	816.3	0.0	17.5 R	92	0	4	6	0	7.0	12,068	21,667	33,735	\$88,420	\$1,317	\$140	\$89,878	-	-	-	-															
Jug Handle SR	154	MEN	751.2	16.0	11.9 O	0	0	0	5	0	4.5	118,850	0	118,850	\$0	\$0	\$0	\$0	-	-	-	-															
MacKerricher SP	146	MEN	1,899.5	574.2	6.0 L 39.2 O 3.0 R	157	0	0	3	0	6.7	1,421,386	107,144	1,528,530	\$253,432	\$21,368	\$13,935	\$288,736	-	-	-	-															
Mailliard Redwoods SR	149	MEN	242.0	0.0	0.0	0	0	0	1	0	0.0	1,420	0	1,420	\$0	\$0	\$0	\$0	-	-	-	-															
Manchester SP	147	MEN	1,490.0	3,782.0	20.6 O	50	1	0	3	0	3.0	89,828	16,125	105,953	\$29,001	\$0	\$0	\$29,001	-	-	-	-															
Mendocino Headlands SP	158	MEN	375.5	0.0	20.6 O	0	0	0	0	0	6.0	-	-	-	\$0	\$0	\$0	\$0	-	-	-	-															
Mendocino Woodlands SP	159	MEN	720.0	0.0	0.0	0	0	100	0	0	9.0	-	-	-	\$0	\$0	\$0	\$0	-	-	-	-															
Montgomery Woods SR	143	MEN	1,323.8	0.0	1.3 R	0	0	0	3	0	1.0	36,500	0	36,500	\$0	\$0	\$0	\$0	-	-	-	-															
Navarro River Redwoods SP	144	MEN	726.5	0.0	1.7 O 100.0 R	35	0	0	8	0	0.0	175,024	16,808	191,832	\$18,021	\$11,315	\$0	\$29,336	-	-	-	-															
Russian Gulch SP	141	MEN	1,257.7	47.0	12.0 O	31	6	0	1	0	11.4	210,177	23,200	233,377	\$70,821	\$3,036	\$1,308	\$75,165	-	-	-	-															
Schooner Gulch SB	164	MEN	53.6	0.0	0.8 O	0	0	0	0	0	0.0	45,140	0	45,140	\$0	\$0	\$0	\$0	-	-	-	-															
Van Damme SP	142	MEN	2,317.2	20.0	51.4 O 9.6 R	84	1	0	1	0	7.8	446,240	53,048	499,288	\$141,177	\$5,792	\$326	\$147,295	-	-	-	-															
Westport-Union Landing SB	150	MEN	57.0	0.0	17.8 O	100	0	0	6	0	0.5	43,296	25,569	68,865	\$41,906	\$0	\$1,171	\$43,078	-	-	-	-															
<b>MENDOCINO DISTRICT TOTALS</b>			12,083.2	4,439.2	6.0 L 180.3 O 131.4 R	549	8	104	41	0	59.3	2,676,325	263,561	2,939,886	\$642,771	\$41,763	\$16,882	\$701,416	\$2,355,502	29.8%	35.0	14.7															

This page intentionally left blank.

**UNITS AND PROPERTIES OF THE CALIFORNIA STATE PARK SYSTEM**

Fiscal Year 2001/02

DISTRICT/Sector/Park Unit	Unit No.	County	ACREAGE			Waterfront Feet (000)	PUBLIC USE FACILITIES					VISITOR ATTENDANCE			REVENUE				Authorized Base Budget		Authorized Staffing Levels	
			DPR Owned	Other			Individual Camp Sites	Group Camp Sites	Non-Camping Overnight Facilities	Individual Picnic Sites	Group Picnic Sites	Non-Motor. Trail Miles	Day Use	Camping	Total	User Fees	Concessions	Misc.	Total	Operating Costs (\$)	Revenue as % of Oper. Cost	Perm Full Time
<b>MONTEREY DISTRICT</b>																		<b>MONTEREY DISTRICT</b>				
<b>Monterey District HQ Office</b>													\$1,923	\$6,548	\$53,759	\$62,230	\$6,243,548	n/a	86.0	24.1		
<b>Asilomar Sector</b>																						
Asilomar SB&Conference Grounds	436	MON	107.0	0.0	7.9 O	0	0	313	0	1	1.8	583,524	0	583,524	\$0	\$1,173,558	\$0	\$1,173,558	-	-	-	-
<b>Big Sur Sector</b>																						
Andrew Molera SP	491	MON	4,766.1	0.0	15.5 O 18.0 R	200	0	0	5	0	25.4	57,941	24,823	82,764	\$35,056	\$37,193	\$294	\$72,543	-	-	-	-
John Little SR	438	MON	20.7	0.0	2.1 O	0	0	0	0	0	0.0	0	0	0	\$0	\$0	\$0	\$0	-	-	-	-
Julia Pfeiffer Burns SP	462	MON	3,142.2	1,620.0	11.9 O	2	0	0	6	0	12.7	103,731	1,617	105,348	\$4,888	\$0	\$269	\$5,157	-	-	-	-
Limekiln	461	MON	711.2	0.0	4.9 O	33	0	0	0	0	3.8	0	0	0	\$61,640	\$0	\$0	\$61,640	-	-	-	-
Pfeiffer Big Sur SP	448	MON	1,062.9	44.2	32.5 R	215	2	61	41	3	10.9	129,136	209,739	338,875	\$534,786	\$455,613	\$41	\$990,441	-	-	-	-
Point Sur SHP	419	MON	72.1	8.1	6.2 O	0	0	0	0	0	0.1	6,018	0	6,018	\$1,646	\$0	\$0	\$1,646	-	-	-	-
<b>Gavilan Sector</b>																						
Fremont Peak SP	412	MON SBT	159.0	2.7	0.0	24	1	0	4	1	8.5	45,610	6,763	52,373	\$8,655	\$0	\$37	\$8,693	-	-	-	-
San Juan Bautista SHP	411	SBT	6.1	0.0	0.0	0	0	0	0	0	0.0	124,942	0	124,942	\$21,283	\$400	\$0	\$21,683	-	-	-	-
<b>Monterey Sector</b>																						
Carmel River SB	437	MON	296.7	0.0	7.0 O 5.6 R	0	0	0	0	0	1.0	212,544	0	212,544	\$0	\$0	\$0	\$0	-	-	-	-
Fort Ord Dunes SP	476	MON	0.0	0.0	0.0	0	0	0	0	0	0.0	0	0	0	\$0	\$0	\$0	\$0	-	-	-	-
Garrapata SP	467	MON	2,938.8	0.8	27.7 O	0	0	0	0	0	10.0	185,346	0	185,346	\$0	\$0	\$0	\$0	-	-	-	-
Marina SB	479	MON	170.7	0.0	5.9 O	0	0	0	0	0	0.8	1,040,718	0	1,040,718		\$1,454	\$118	\$1,572	-	-	-	-
Monterey SB	460	MON	90.2	10.0	21.2 O	0	0	0	0	0	0.8	1,405,410	0	1,405,410	\$0	\$0	\$0	\$0	-	-	-	-
Monterey SHP	455	MON	8.3	1.4	0.0	0	0	0	0	0	0.0	570,915	0	570,915	\$11,563	\$14,010	\$0	\$25,573	-	-	-	-
Moss Landing SB	454	MON	60.4	0.0	4.7 O	0	0	0	0	0	0.0	204,648	0	204,648	\$1,220	\$0	\$0	\$1,220	-	-	-	-
Point Lobos SR	449	MON	493.7	818.3	23.8 O	0	0	0	22	0	9.0	0	0	0	\$248,921	\$0	\$109	\$249,030	-	-	-	-
Point Lobos Ranch	440	MON	259.2	0.0	0.0	0	0	0	0	0	0.0	287,741	0	287,741	\$0	\$0	\$0	\$0	-	-	-	-
Salinas River SB	451	MON	281.8	0.0	15.6 O	0	0	0	0	0	1.6	452,181	0	452,181	\$0	\$0	\$0	\$0	-	-	-	-
Zmudowski SB	450	MON SCR	155.5	38.7	10.7 O	0	0	0	0	0	1.5	150,618	0	150,618	\$0	\$0	\$0	\$0	-	-	-	-
<b>MONTEREY DISTRICT TOTALS</b>			14,802.4	2,544.2	165.1 O 56.1 R	474	3	374	78	5	87.8	5,561,023	242,942	5,803,965	\$932,290	\$1,688,980	\$54,629	\$2,675,899	\$6,243,548	42.9%	86.0	24.1

This page intentionally left blank.



**UNITS AND PROPERTIES OF THE CALIFORNIA STATE PARK SYSTEM**

Fiscal Year 2001/02

DISTRICT/Sector/Park Unit	Unit No.	County	ACREAGE			Waterfront Feet (000)	PUBLIC USE FACILITIES					VISITOR ATTENDANCE			REVENUE				Authorized Base Budget		Authorized Staffing Levels	
			DPR Owned	Other			Individual Camp Sites	Group Camp Sites	Non-Camping Overnight Facilities	Individual Picnic Sites	Group Picnic Sites	Non-Motor. Trail Miles	Day Use	Camping	Total	User Fees	Concessions	Misc.	Total	Operating Costs (\$)	Revenue as % of Oper. Cost	Perm Full Time
<b>NORTH COAST REDWOODS DISTRICT</b>																			<b>NORTH COAST REDWOODS DISTRICT</b>			
<b>North Coast Redwoods District HQ Office</b>													\$621	\$263	\$2,873	\$3,757	\$4,936,510	n/a	74.0	28.4		
<b>Eel River Sector</b>																						
Admiral William Standley SRA	118	MEN	45.2	0.0	3.2 R	0	0	0	0	0	0.0	6,506	0	6,506	\$0	\$0	\$0	\$0	-	-	-	-
Benbow Lake SRA	123	HUM	975.5	0.0	17.5 L 18.1 R	78	0	0	10	3	6.5	23,681	13,918	37,599	\$69,269	\$3,490	\$244	\$73,003	-	-	-	-
Grizzly Creek Redwoods SP	110	HUM	393.5	0.0	17.7 R	34	1	0	24	1	4.5	13,239	9,473	22,712	\$28,993	\$150	\$0	\$29,142	-	-	-	-
Humboldt Redwoods SP	119	HUM	51,216.5	18.2	295.0 R	267	4	0	7	2	95.7	464,902	72,434	537,336	\$246,006	\$1,746	\$0	\$247,752	-	-	-	-
Reynolds WC	131	MEN	65.8	0.0	9.0 R	0	0	0	0	0	0.0	0	0	0	\$0	\$0	\$0	\$0	-	-	-	-
Richardson Grove SP	116	HUM	1,720.2	0.0	15.3 R	171	1	0	15	1	11.1	39,469	42,695	82,164	\$151,502	\$3,812	\$1,166	\$156,481	-	-	-	-
Sinkyone Wilderness SP	133	HUM MEN	7,596.3	131.0	36.7 O 15.1 R	51	2	1	4	0	23.9	14,254	19,950	34,204	\$30,247	\$46	\$1	\$30,294	-	-	-	-
Smithe Redwoods SR	130	MEN	689.0	0.0	6.6 R	0	0	0	0	0	0.0	0	0	0	\$0	\$0	\$0	\$0	-	-	-	-
Standish-Hickey SRA	117	MEN	1,080.2	0.0	28.7 R	163	0	0	5	0	8.7	17,364	31,708	49,072	\$95,776	\$2,524	\$535	\$98,835	-	-	-	-
<b>Redwood Coast Sector</b>																						
Del Norte Coast Redwoods SP	103	DN	6,369.9	0.0	38.3 O	149	0	0	0	0	17.4	26,581	33,858	60,439	\$118,024	\$517	\$24	\$118,566	-	-	-	-
Jedediah Smith Redwoods SP	102	DN	9,891.4	0.0	46.9 R	111	1	0	1	0	21.2	149,258	45,408	194,666	\$180,772	\$5,084	\$665	\$186,521	-	-	-	-
Lakes Earl and Tolowa	134	DN	4,398.8	0.0	0.6 L 13.7 O	6	1	0	0	0	10.5	28,982	51	29,033	\$0	\$0	\$0	\$0	-	-	-	-
Pelican SB	101	DN	5.2	0.0	1.0 O	0	0	0	0	0	0.0	12,978	0	12,978	\$0	\$0	\$0	\$0	-	-	-	-
Prairie Creek Redwoods SP	104	DN HUM	14,061.0	126.3	32.6 O	117	0	0	10	0	61.0	140,972	58,930	199,902	\$221,198	\$1,231	\$135	\$222,564	-	-	-	-
<b>Trinidad Sector</b>																						
Azalea SR	109	HUM	30.4	0.0	0.0	0	0	0	0	0	0.9	7,309	0	7,309	\$0	\$0	\$0	\$0	-	-	-	-
Fort Humboldt SHP	120	HUM	18.0	0.0	0.0	0	0	0	0	0	0.0	24,264	0	24,264	\$0	\$0	\$0	\$0	-	-	-	-
Harry A. Merlo SRA	136	HUM	955.0	0.0	18.7 L	0	0	0	0	0	0.4	60,599	0	60,599	\$0	\$0	\$0	\$0	-	-	-	-
Humboldt Lagoons SP	105	HUM	1,936.1	0.0	49.2 L 36.7 O	12	0	0	4	0	2.9	136,294	100	136,394	\$3,148	\$1,784	\$50	\$4,982	-	-	-	-
Little River SB	108	HUM	111.6	0.0	4.0 O 4.3 R	0	0	0	0	0	0.0	25,245	0	25,245	\$0	\$0	\$0	\$0	-	-	-	-
Patrick's Point SP	106	HUM	640.2	0.0	21.9 O	129	1	0	27	3	8.1	107,507	77,703	185,210	\$297,195	\$0	\$1,936	\$299,131	-	-	-	-
Trinidad SB	107	HUM	158.7	0.0	8.4 O	0	0	0	10	0	1.4	52,644	0	52,644	\$0	\$0	\$0	\$0	-	-	-	-
<b>NORTH COAST REDWOODS DISTRICT TOTALS</b>			102,358.4	275.6	86.0 L 193.3 O 459.9 R	1,288	11	1	117	10	274.2	1,352,048	406,228	1,758,276	\$1,442,750	\$20,647	\$7,630	\$1,471,028	\$4,936,510	29.8%	74.0	28.4

This page intentionally left blank.

**UNITS AND PROPERTIES OF THE CALIFORNIA STATE PARK SYSTEM**

Fiscal Year 2001/02

DISTRICT/Sector/Park Unit	Unit No.	County	ACREAGE			PUBLIC USE FACILITIES						VISITOR ATTENDANCE			REVENUE				Authorized Base Budget		Authorized Staffing Levels				
			DPR Owned	Other	Waterfront Feet (000)	Individual Camp Sites	Group Camp Sites	Non-Camping Overnight Facilities	Individual Picnic Sites	Group Picnic Sites	Non-Motor. Trail Miles	Day Use	Camping	Total	User Fees	Concessions	Misc.	Total	Operating Costs (\$)	Revenue as % of Oper. Cost	Perm Full Time	Temp PY Equiv.			
<b>NORTHERN BUTTES DISTRICT</b>																						<b>NORTHERN BUTTES DISTRICT</b>			
<b>Northern Buttes District HQ Office</b>															\$20,971	\$351,447	\$19,029	\$391,447	\$4,897,195	n/a	66.0	32.0			
Bidwell Mansion SHP	139	BUT	5.2	0.0	0.0	0	0	0	0	0	0.0	48,753	0	48,753	\$8,382	\$0	\$0	\$8,382	-	-	-	-			
Bidwell-Sacramento River SP	163	BUT GLE	243.4	0.0	11.6 R	6	0	0	21	0	1.9	143,272	62	143,334	\$7,657	\$0	\$246	\$7,903	-	-	-	-			
Clay Pit SVRA (*)	155	BUT	0.0	220.1	0.0	0	0	0	0	0	0.0	13,354	0	13,354	\$0	\$0	\$0	\$0	-	-	-	-			
Colusa-Sacramento River SRA	140	COL	66.5	0.0	4.4 R	14	1	0	10	0	1.8	184,549	7,290	191,839	\$27,771	\$0	\$0	\$27,771	-	-	-	-			
Lake Oroville SRA	151	BUT	902.5	28,544.4	934.6 L 34.4 R	1,401	24	0	280	4	64.6	971,996	53,849	1,025,845	\$320,472	\$0	\$263	\$320,735	-	-	-	-			
William B. Ide Adobe SHP	128	TEH	3.9	0.0	1.8 R	0	0	0	8	2	0.0	46,453	0	46,453	\$1,144	\$0	\$26	\$1,169	-	-	-	-			
Woodson Bridge SRA	122	TEH	323.5	0.0	18.5 R	43	1	0	2	0	1.0	78,956	10,143	89,099	\$31,693	\$0	\$649	\$32,342	-	-	-	-			
<b>Cascade Sector</b>															\$0	-\$302	\$0	-\$302	-	-	-	-			
Ahjumawi Lava Springs SP	190	SHA	11,820.0	485.2	18.3 L 17.0 R	9	0	0	1	0	12.9	2,312	763	3,075	\$175	\$0	\$0	\$175	-	-	-	-			
Castle Crags SP	124	SHA	3,904.7	0.0	16.3 R	83	0	0	10	0	29.3	45,903	22,382	68,285	\$81,889	\$0	\$0	\$81,889	-	-	-	-			
McArthur-Burney Falls Memorial SP	125	SHA	611.1	299.0	9.0 L 16.7 R	136	0	0	45	0	8.3	176,560	67,115	243,675	\$226,301	\$62,530	\$40	\$288,870	-	-	-	-			
Shasta SHP	126	SHA	23.0	0.0	0.0	0	0	0	1	1	30.0	34,145	0	34,145	\$7,606	\$30,389	\$264	\$38,258	-	-	-	-			
Weaverville Joss House SHP	127	TRI	2.8	0.0	0.0	0	0	0	0	0	0.0	13,876	0	13,876	\$4,237	\$0	\$107	\$4,344	-	-	-	-			
<b>NORTHERN BUTTES DISTRICT TOTALS</b>			17,906.6	29,548.7	961.9 L 120.7 R	1,692	26	0	378	7	149.7	1,760,129	161,604	1,921,733	\$738,297	\$444,063	\$20,624	\$1,202,984	\$4,897,195	24.6%	66.0	32.0			
<b>ORANGE COAST DISTRICT</b>																						<b>ORANGE COAST DISTRICT</b>			
<b>Orange Coast District HQ Office</b>															\$55,284	\$0	\$61,704	\$116,988	\$9,970,486	n/a	114.0	111.9			
Corona del Mar SB	532	ORA	29.6	0.0	2.7 O	0	0	0	4	1	0.0	-	-	-	\$0	\$0	\$0	\$0	-	-	-	-			
Crystal Cove SP	594	ORA	2,791.1	1,150.0	16.8 O	3	0	0	3	1	48.0	577,595	212	577,807	\$278,134	\$1,009,848	\$286	\$1,288,268	-	-	-	-			
Doheny SB	610	ORA	62.3	192.0	6.6 O	120	0	0	134	17	1.3	1,238,818	144,870	1,383,688	\$717,970	\$55,365	\$2,555	\$775,889	-	-	-	-			
San Clemente SB	611	ORA	117.5	0.1	6.3 O	161	1	0	15	2	1.3	452,975	88,568	541,543	\$310,301	\$3,814	\$1,645	\$315,760	-	-	-	-			
San Onofre SB	662	SD	0.0	2,109.7	24.3 O	333	2	0	4	0	7.0	2,576,190	208,463	2,784,653	\$1,141,614	\$5,465	\$698	\$1,147,778	-	-	-	-			
<b>North Sector</b>															\$0	\$32	\$0	\$32	-	-	-	-			
Bolsa Chica SB	534	ORA	169.2	0.3	27.8 O	118	0	0	0	0	2.7	2,082,261	0	2,082,261	\$531,968	\$2,903	\$8,338	\$543,208	-	-	-	-			
Huntington SB	564	ORA	121.1	0.0	10.9 O	0	0	0	6	0	2.2	3,661,980	0	3,661,980	\$1,026,256	\$23,789	\$2,543	\$1,052,588	-	-	-	-			
<b>ORANGE COAST DISTRICT TOTALS</b>			3,290.7	3,452.0	95.4 O	735	3	0	166	21	62.5	10,589,819	442,113	11,031,932	\$4,061,527	\$1,101,215	\$77,769	\$5,240,511	\$9,970,486	52.6%	114.0	111.9			

(\*) Clay Pit SVRA is operated by the Northern Buttes District under agreement with the OHVMR Division.

This page intentionally left blank.

**UNITS AND PROPERTIES OF THE CALIFORNIA STATE PARK SYSTEM**

Fiscal Year 2001/02

DISTRICT/Sector/Park Unit	Unit No.	County	ACREAGE			PUBLIC USE FACILITIES						VISITOR ATTENDANCE			REVENUE				Authorized Base Budget		Authorized Staffing Levels		
			DPR Owned	Other	Waterfront Feet (000)	Individual Camp Sites	Group Camp Sites	Non-Camping Overnight Facilities	Individual Picnic Sites	Group Picnic Sites	Non-Motor. Trail Miles	Day Use	Camping	Total	User Fees	Concessions	Misc.	Total	Operating Costs (\$)	Revenue as % of Oper. Cost	Perm Full Time	Temp PY Equiv.	
<b>RUSSIAN RIVER DISTRICT</b>																				<b>RUSSIAN RIVER DISTRICT</b>			
<b>Russian River District HQ Office</b>													\$1,836	\$3,074	\$16,260	\$21,171	\$3,370,707	n/a	43.0	21.1			
<b>Bodega Sector (Sector II)</b>													\$0	\$0	\$0	\$0	-	-	-	-			
Fort Ross SHP	207	SON	3,303.1	90.0	23.5 O	20	0	0	26	0	0.5	123,625	5,777	129,402	\$46,861	\$0	\$357	\$47,218	-	-	-	-	
Kruse Rhododendron SR	206	SON	317.0	0.0	0.0	0	0	0	0	0	2.0	25,355	0	25,355	\$0	\$0	\$0	\$0	-	-	-	-	
Salt Point SP	248	SON	4,744.9	940.0	42.4 O	119	1	0	22		13.0	255,310	50,373	305,683	\$123,733	\$0	\$721	\$124,453	-	-	-	-	
<b>Seaview Sector (Sector I)</b>													\$0	\$0	\$0	\$0	-	-	-	-			
Sonoma Coast SB	209	SON	4,760.4	667.0	100.8 O 26.6 R	160	0	0	65	0	20.2	2,273,943	90,478	2,364,421	\$261,697	\$0	\$432	\$262,129	-	-	-	-	
<b>Sweetwater Sector (Sector III)</b>													\$0	\$0	\$0	\$0	-	-	-	-			
Armstrong Redwoods SR	208	SON	752.0	0.0	0.0	0	0	0	78	1	5.6	991,622	0	991,622	\$56,335	\$0	\$123	\$56,458	-	-	-	-	
Austin Creek SRA	245	SON	5,927.5	0.0	0.0	27	0	0	4	0	23.9	154,645	7,770	162,415	\$0	\$0	\$142	\$142	-	-	-	-	
<b>RUSSIAN RIVER DISTRICT TOTALS</b>			19,804.9	1,697.0	166.7 O 26.6 R	326	1	0	195	1	65.2	3,824,500	154,398	3,978,898	\$490,462	\$3,074	\$18,035	\$511,571	\$3,370,707	15.2%	43.0	21.1	
<b>SAN DIEGO COAST DISTRICT</b>																				<b>SAN DIEGO COAST DISTRICT</b>			
<b>San Diego Coast District HQ Office</b>													\$35	-\$180	\$38,820	\$38,675	\$6,827,843	n/a	90.0	64.1			
Border Field SP	669	SD	803.2	495.7	6.0 O	0	2	0	34	34	9.9	29,023	0	29,023	\$150	\$0	\$0	\$150	-	-	-	-	
Cardiff SB	621	SD	26.9	480.3	6.3 O	0	0	0	5	0	0.0	1,189,445	0	1,189,445	\$15,893	\$0	\$264	\$16,157	-	-	-	-	
Carlsbad SB	612	SD	18.4	10.0	7.1 O	0	0	0	4	0	0.0	1,460,750	0	1,460,750	\$0	\$0	\$0	\$0	-	-	-	-	
Leucadia SB	653	SD	10.6	0.0	5.4 O	0	0	0	0	0	0.0	-	-	-	\$0	\$0	\$0	\$0	-	-	-	-	
Moonlight SB	638	SD	12.7	0.0	1.6 O	0	0	0	12	0	0.0	-	-	-	\$0	\$0	\$0	\$0	-	-	-	-	
San Elijo SB	654	SD	42.6	545.0	7.1 O	171	0	0	12	0	0.0	529,465	236,635	766,100	\$570,100	\$74,925	\$289	\$645,314	-	-	-	-	
Silver Strand SB	614	SD	227.2	40.0	23.6 O	0	0	0	110	0	0.0	532,875	81,195	614,070	\$349,882	\$5,153	\$2,188	\$357,222	-	-	-	-	
South Carlsbad SB	652	SD	118.4	0.0	17.9 O	226	0	0	5	0	0.0	1,145,294	237,158	1,382,452	\$604,826	\$63,447	\$842	\$669,115	-	-	-	-	
Torrey Pines SB	631	SD	61.4	0.0	8.8 O	0	0	0	2	0	0.0	936,647	0	936,647	\$3,940	\$0	\$0	\$3,940	-	-	-	-	
Torrey Pines SR	631	SD	1,446.2	15.2	0.0	0	0	0	0	0	13.0	381,637	0	381,637	\$291,937	\$0	\$540	\$292,477	-	-	-	-	
<b>Historic Parks Sector</b>													\$0	\$0	\$0	\$0	-	-	-	-			
Old Town San Diego SHP	667	SD	29.0	0.1	0.0	0	0	0	0	0	0.0	6,404,247	0	6,404,247	\$5,288	\$2,281,951	\$1,465	\$2,288,704	-	-	-	-	
San Pasqual Battlefield SHP	615	SD	1.9	47.7	0.0	0	0	0	2	0	0.5	10,261	0	10,261	\$0	\$0	\$0	\$0	-	-	-	-	
<b>SAN DIEGO COAST DISTRICT TOTALS</b>			2,798.4	1,634.0	83.8 O	397	2	0	186	34	23.4	12,619,644	554,988	13,174,632	\$1,842,050	\$2,425,295	\$44,408	\$4,311,754	\$6,827,843	63.1%	90.0	64.1	
<b>SAN JOAQUIN DISTRICT</b>																				<b>SAN JOAQUIN DISTRICT</b>			
<b>San Joaquin Coast District HQ Office</b>													\$38	\$0	\$4,392	\$4,430	\$3,355,803	n/a	42.0	8.0			
<b>Millerton Lake Sector</b>													\$0	\$0	\$0	\$0	-	-	-	-			
Millerton Lake SRA	378	FRE MAD	6,553.5	6,857.5	233.0 L	211	6	0	175	2	0.0	580,411	53,478	633,889	\$363,943	\$53,776	\$16,819	\$434,538	-	-	-	-	
<b>North Sector</b>													\$0	\$0	\$0	\$0	-	-	-	-			
CA State Mining & Mineral Museum	707	SJ	0.0	0.0	0.0	0	0	0	0	0	0.0	16,073	0	16,073	\$3,615	\$0	\$0	\$3,615	-	-	-	-	
Wassama Round House SHP	376	MAD	26.6	0.0	0.0	0	0	0	6	1	0.0	1,574	0	1,574	\$0	\$0	\$0	\$0	-	-	-	-	
<b>South Sector</b>													\$0	-\$1,008	\$0	-\$1,008	-	-	-	-			
Colonel Allensworth SHP	341	TUL	239.5	0.0	0.0	16	0	0	20	0	0.0	9,292	2,876	12,168	\$7,848	\$0	\$279	\$8,127	-	-	-	-	
Fort Tejon SHP	351	KER	205.4	0.0	0.0	0	1	0	12	0	0.0	43,365	856	44,221	\$10,286	\$0	\$777	\$11,063	-	-	-	-	
Tule Elk SR	350	KER	983.6	0.0	0.0	0	0	0	8	0	2.0	4,785	35	4,820	\$636	\$0	\$0	\$636	-	-	-	-	
<b>SAN JOAQUIN DISTRICT TOTALS</b>			8,008.5	6,857.5	233.0 L	227	7	0	221	3	2.0	655,500	57,245	712,745	\$386,366	\$52,768	\$22,267	\$461,401	\$3,355,803	13.7%	42.0	8.0	

This page intentionally left blank.

**UNITS AND PROPERTIES OF THE CALIFORNIA STATE PARK SYSTEM**

Fiscal Year 2001/02

DISTRICT/Sector/Park Unit	Unit No.	County	ACREAGE			PUBLIC USE FACILITIES						VISITOR ATTENDANCE			REVENUE				Authorized Base Budget		Authorized Staffing Levels					
			DPR Owned	Other	Waterfront Feet (000)	Individual Camp Sites	Group Camp Sites	Non-Camping Overnight Facilities	Individual Picnic Sites	Group Picnic Sites	Non-Motor. Trail Miles	Day Use	Camping	Total	User Fees	Concessions	Misc.	Total	Operating Costs (\$)	Revenue as % of Oper. Cost	Perm Full Time	Temp PY Equiv.				
<b>SAN LUIS OBISPO COAST DISTRICT</b>																			<b>SAN LUIS OBISPO COAST DISTRICT</b>							
<b>San Luis Obispo District HQ Office</b>																			\$2,858	\$0	\$105,189	\$108,047	\$2,718,068	n/a	37.0	11.9
Cayucos SB	452	SLO	15.6	0.0	2.0 O	0	0	0	0	0	0.0	-	-	-	\$0	\$0	\$0	\$0	-	-	-	-				
Esteros Bay	749	SLO	353.3	0.0	23.0 O	0	0	0	0	0	3.8	0	0	0	\$0	\$0	\$0	\$0	-	-	-	-				
Los Osos Oaks SR	739	SLO	85.1	0.0	0.0	0	0	0	0	0	0.4	12,253	0	12,253	\$0	\$0	\$0	\$0	-	-	-	-				
Montaña De Oro SP	441	SLO	8,295.6	1.0	57.9 O	49	5	0	2	1	42.8	713,285	39,225	752,510	\$81,366	\$0	\$70	\$81,436	-	-	-	-				
Morro Bay SP	443	SLO	2,137.6	592.5	48.7 O	124	2	0	0	4	25.9	1,335,241	115,892	1,451,133	\$402,468	\$258,101	\$1,316	\$661,885	-	-	-	-				
Morro Strand SB	442	SLO	160.2	0.0	19.5 O	76	0	0	1	10	0.0	128,137	44,484	172,621	\$136,183	\$0	\$384	\$136,568	-	-	-	-				
Pismo SB	446	SLO	1,342.7	0.0	1.2 L 32.4 O	185	0	0	8	1	2.3	1,203,244	162,200	1,365,444	\$516,445	\$123,744	\$826	\$641,016	-	-	-	-				
<b>SAN LUIS OBISPO COAST DISTRICT TOTALS</b>			12,390.2	593.5	1.2 L 183.5 O	434	7	0	11	16	75.1	3,392,160	361,801	3,753,961	\$1,139,320	\$381,845	\$107,787	\$1,628,952	\$2,718,068	59.9%	37.0	11.9				
<b>SAN SIMEON DISTRICT</b>																			<b>SAN SIMEON DISTRICT</b>							
<b>San Simeon District HQ Office</b>																			-\$46	\$0	\$213,344	\$213,297	\$10,564,205	n/a	109.0	101.2
Hearst San Simeon SHM	494	SLO	161.1	45.5	0.0	0	0	0	2	0	0.0	841,832	0	841,832	\$5,236,302	\$1,214,073	\$4,044	\$6,454,419	-	-	-	-				
San Simeon SP	487	SLO	543.3	0.0	12.4 O	205	0	0	20	0	3.4	597,890	130,245	728,135	\$301,473	\$0	\$3,524	\$304,998	-	-	-	-				
William Randolph Hearst Mem SB	486	SLO	8.1	0.0	0.8 O	0	0	0	25	0	0.0	358,923	0	358,923	\$263	\$1,109	\$0	\$1,371	-	-	-	-				
<b>SAN SIMEON DISTRICT TOTALS</b>			712.5	45.5	13.2 O	205	0	0	47	0	3.4	1,798,645	130,245	1,928,890	\$5,537,992	\$1,215,182	\$220,912	\$6,974,086	\$10,564,205	66.0%	109.0	101.2				
<b>SANTA CRUZ DISTRICT</b>																			<b>SANTA CRUZ DISTRICT</b>							
<b>Santa Cruz District HQ Office</b>																			\$77,752	\$397,324	\$24,090	\$499,165	\$7,497,107	n/a	104.0	46.1
Henry Cowell Redwoods SP	418	SCR	4,315.9	0.0	44.6 R	112	0	0	6	6	59.6	292,353	69,448	361,801	\$237,753	\$0	\$114	\$237,867	-	-	-	-				
Lighthouse Field SB	474	SCR	37.6	0.0	0.0	0	0	0	0	0	3.0	-	-	-	\$0	\$0	\$0	\$0	-	-	-	-				
Manresa SB	416	SCR	137.9	0.0	11.8 O	64	0	0	2	0	0.6	210,608	57,337	267,945	\$92,494	\$0	\$274	\$92,768	-	-	-	-				
Natural Bridges SB	407	SCR	58.9	0.0	51.1 O	0	0	0	52	0	1.2	838,917	0	838,917	\$24,426	\$0	\$170	\$24,596	-	-	-	-				
New Brighton SB	408	SCR	157.3	0.1	3.9 O	116	0	0	14	1	1.5	1,445,100	157,734	1,602,834	\$233,436	\$0	\$0	\$233,436	-	-	-	-				
Santa Cruz Mission SHP	433	SCR	1.9	0.0	0.0	0	0	0	2	0	0.0	11,591	0	11,591	\$0	\$0	\$0	\$0	-	-	-	-				
Seacliff SB	409	SCR	86.5	0.0	9.5 O	26	0	0	131	1	0.2	2,477,722	53,277	2,530,999	\$192,726	\$0	\$378	\$193,104	-	-	-	-				
Sunset SB	410	SCR	299.8	2.3	18.6 O	92	1	0	3	2	0.9	231,844	88,294	320,138	\$162,502	\$0	\$288	\$162,790	-	-	-	-				
The Forest of Nisene Marks SP	465	SCR	10,222.2	0.0	0.0	6	0	0	4	0	45.0	123,793	125	123,918	\$6,173	\$0	\$59	\$6,232	-	-	-	-				
Twin Lakes SB	422	SCR	93.7	1.6	10.6 L 4.3 O	0	0	0	0	0	1.0	1,172,838	0	1,172,838	-\$780	\$40,500	\$0	\$39,720	-	-	-	-				
Wilder Ranch SP	456	SCR	7,844.5	0.0	18.8 O	0	6	0	5	0	33.1	407,875	0	407,875	\$7,264	\$0	\$38	\$7,302	-	-	-	-				
<b>Mountain Sector</b>																			\$0	\$0	\$0	\$0	-	-	-	
Big Basin Redwoods SP	406	SCR SM	17,997.9	0.0	6.1 O	181	10	36	105	0	130.3	1,128,500	131,419	1,259,919	\$314,985	\$1,252	\$2,251	\$318,488	-	-	-	-				
Castle Rock SP	404	SCL SCR SM	3,918.7	13.0	2.5 R	26	0	0	0	0	45.0	97,706	3,035	100,741	\$16,454	\$0	\$110	\$16,564	-	-	-	-				
Portola Redwoods SP	405	SM	2,527.8	0.0	0.0	66	4	0	26	1	21.0	20,748	37,539	58,287	\$80,480	\$880	\$590	\$81,949	-	-	-	-				
<b>SANTA CRUZ DISTRICT TOTALS</b>			47,700.7	17.0	10.6 L 124.1 O 47.1 R	689	21	36	350	11	342.4	8,459,595	598,208	9,057,803	\$1,445,666	\$439,955	\$28,361	\$1,913,982	\$7,497,107	25.5%	104.0	46.1				

This page intentionally left blank.



**UNITS AND PROPERTIES OF THE CALIFORNIA STATE PARK SYSTEM**

Fiscal Year 2001/02

DISTRICT/Sector/Park Unit	Unit No.	County	ACREAGE		Waterfront Feet (000)	PUBLIC USE FACILITIES					VISITOR ATTENDANCE			REVENUE				Authorized Base Budget	Revenue as % of Oper. Cost	Authorized Staffing Levels		
			DPR Owned	Other		Individual Camp Sites	Group Camp Sites	Non-Camping Overnight Facilities	Individual Picnic Sites	Group Picnic Sites	Non-Motor. Trail Miles	Day Use	Camping	Total	User Fees	Concessions	Misc.	Total		Operating Costs (\$)	Perm Full Time	Temp PY Equiv.
<b>SIERRA DISTRICT</b>																		<b>SIERRA DISTRICT</b>				
<b>Sierra District HQ Office</b>													\$124	-\$69	\$18,500	\$18,554	\$4,816,425	n/a	53.0	22.0		
<b>Lake Tahoe Sector</b>													\$0	\$0	\$0	\$0	-	-	-	-		
Burton Creek SP	348	PLA	1,890.3	0.0	0.0	0	0	0	0	0	11.5	0	0	0	\$0	\$0	\$0	\$0	-	-	-	-
D.L. Bliss SP	303	ED	888.9	1,260.0	19.4 L	165	1	0	0	0	5.5	52,398	67,608	120,006	\$155,397	\$0	\$584	\$155,981	-	-	-	-
Emerald Bay SP	313	ED	594.7	870.0	21.1 L	121	0	0	0	0	5.0	566,145	29,145	595,290	\$102,020	\$883	\$625	\$103,528	-	-	-	-
Kings Beach SRA	343	PLA	7.7	0.0	0.9 L	0	0	0	0	0	0.0	-	-	-	\$0	\$0	\$0	\$0	-	-	-	-
Lake Valley SRA	382	ED	155.4	0.0	2.8 R	0	0	0	0	0	0.0	24,695	0	24,695	\$0	\$613,760	\$0	\$613,760	-	-	-	-
Sugar Pine Point SP	339	ED	2,324.5	0.0	7.7 L	100	12	0	50	0	10.1	54,077	60,548	114,625	\$165,688	\$10,014	\$833	\$176,535	-	-	-	-
Tahoe SRA	302	PLA	61.7	0.0	1.2 L 0.1 R	26	0	0	3	0	0.0	-	-	-	\$29,480	\$94,043	\$19,413	\$142,935	-	-	-	-
Ward Creek	349	PLA	173.0	0.0	0.0	0	0	0	0	0	0.0	0	0	0	\$0	\$0	\$0	\$0	-	-	-	-
Washoe Meadows SP	390	ED	627.7	0.0	3.8 R	0	0	0	0	0	3.7	11,468	0	11,468	\$0	\$0	\$0	\$0	-	-	-	-
<b>Sierra Nevada Sector</b>													\$0	\$0	\$0	\$0	-	-	-	-		
Bodie SHP	324	MNO	1,064.5	0.0	0.0	0	0	0	10	0	0.6	153,858	0	153,858	\$76,212	\$1,689	\$0	\$77,901	-	-	-	-
Donner Memorial SB	301	NEV PLA	1,029.9	0.0	8.8 L 2.6 R	149	0	0	48	0	7.5	146,905	50,231	197,136	\$156,958	\$11,619	\$2,173	\$170,750	-	-	-	-
Grover Hot Springs SP	322	ALP	553.4	0.0	0.0	76	0	0	20	0	2.9	82,866	17,697	100,563	\$208,019	\$59	\$1,293	\$209,371	-	-	-	-
Mono Lake Tufa SR	366	MNO	0.0	17,000.0	0.0	0	0	0	3	0	3.6	258,930	0	258,930	\$0	\$0	\$0	\$0	-	-	-	-
Plumas-Eureka SP	321	PLU	4,423.3	0.0	0.0	67	1	0	12	0	17.0	75,618	22,623	98,241	\$62,274	\$1,258	\$610	\$64,142	-	-	-	-
<b>SIERRA DISTRICT TOTALS</b>			13,795.0	19,130.0	59.1 L 9.3 R	704	14	0	146	0	67.3	1,426,960	247,852	1,674,812	\$956,171	\$733,256	\$44,031	\$1,733,458	\$4,816,425	36.0%	53.0	22.0

This page intentionally left blank.

**UNITS AND PROPERTIES OF THE CALIFORNIA STATE PARK SYSTEM**

Fiscal Year 2001/02

DISTRICT/Sector/Park Unit	Unit No.	County	ACREAGE			PUBLIC USE FACILITIES						VISITOR ATTENDANCE			REVENUE				Authorized Base Budget		Authorized Staffing Levels				
			DPR Owned	Other	Waterfront Feet (000)	Individual Camp Sites	Group Camp Sites	Non-Camping Overnight Facilities	Individual Picnic Sites	Group Picnic Sites	Non-Motor. Trail Miles	Day Use	Camping	Total	User Fees	Concessions	Misc.	Total	Operating Costs (\$)	Revenue as % of Oper. Cost	Perm Full Time	Temp PY Equiv.			
<b>SILVERADO DISTRICT</b>																		<b>SILVERADO DISTRICT</b>							
<b>Silverado District HQ Office</b>																		\$901	\$21,057	\$5,550	\$27,507	\$3,789,289	n/a	57.5	18.6
Annadel SB	246	SON	5,092.7	0.8	0.0	0	0	0	8	0	33.1	226,023	0	226,023	\$675	\$0	\$0	\$675	-	-	-	-			
Bale Grist Mill SHP	251	NAP	0.8	0.0	0.0	0	0	0	0	0	1.7	21,634	0	21,634	\$11,597	\$0	\$0	\$11,597	-	-	-	-			
Benicia SRA	224	SOL	446.7	0.0	17.8 O	0	0	0	4	0	3.0	245,804	0	245,804	\$0	\$0	\$0	\$0	-	-	-	-			
Benicia Capital SHP	221	SOL	0.9	0.0	0.0	0	0	0	0	0	0.0	12,538		12,538	\$5,558	\$0	\$0	\$5,558	-	-	-	-			
Bothe-Napa Valley SP	240	NAP SON	1,990.6	0.0	0.0	46	1	0	50	1	9.5	31,472	45,378	76,850	\$119,160	\$0	\$377	\$119,537	-	-	-	-			
Jack London SHP	241	SON	831.2	179.6	0.0	0	0	0	11	1	12.5	76,659	0	76,659	\$47,308	\$5,372	\$0	\$52,679	-	-	-	-			
Petaluma Adobe SHP	219	SON	41.2	0.0	0.0	0	0	0	10	0	0.5	46,720	0	46,720	\$6,010	\$0	\$0	\$6,010	-	-	-	-			
Robert Louis Stevenson SP	215	LAK NAD SON	5,310.8	586.2	0.0	0	0	0	0	0	16.0	24,339	0	24,339	\$200	\$0	\$0	\$200	-	-	-	-			
Sonoma SHP	243	SON	63.6	0.0	0.0	0	0	0	13	13	0.0	572,259	0	572,259	\$54,709	\$378	\$0	\$55,087	-	-	-	-			
Sugarloaf Ridge SP	247	NAP SON	3,783.2	0.0	0.0	49	2	0	20	1	30.5	122,905	21,038	143,943	\$78,022	\$0	\$453	\$78,475	-	-	-	-			
<b>Clear Lake Sector</b>																		-\$6	\$0	\$0	-\$6	-	-	-	-
Anderson Marsh SHP	701	LAK	1,078.7	1.5	12.5 L	0	0	0	1	0	0.0	47,942	0	47,942	\$0	\$0	\$0	\$0	-	-	-	-			
Clear Lake SP	218	LAK	590.0	0.0	11.4 L	149	0	0	1	1	0.0	50,742	63,217	113,959	\$163,895	\$2,434	\$1,554	\$167,882	-	-	-	-			
<b>SILVERADO DISTRICT TOTALS</b>			19,230.1	768.1	23.9 L 17.8 O	244	3	0	118	17	106.7	1,479,037	129,633	1,608,670	\$488,028	\$29,240	\$7,934	\$525,202	\$3,789,289	13.9%	57.5	18.6			

This page intentionally left blank.

**UNITS AND PROPERTIES OF THE CALIFORNIA STATE PARK SYSTEM**

Fiscal Year 2001/02

DISTRICT/Sector/Park Unit	Unit No.	County	ACREAGE		Waterfront Feet (000)	PUBLIC USE FACILITIES					VISITOR ATTENDANCE			REVENUE				Authorized Base Budget	Revenue as % of Oper. Cost	Authorized Staffing Levels													
			DPR Owned	Other		Individual Camp Sites	Group Camp Sites	Non-Camping Overnight Facilities	Individual Picnic Sites	Group Picnic Sites	Non-Motor. Trail Miles	Day Use	Camping	Total	User Fees	Concessions	Misc.	Total		Operating Costs (\$)	Perm Full Time	Temp PY Equiv.											
<b>OHMVR DISTRICTS (5)</b>																			<b>OHMVR DISTRICTS (5)</b>														
<b>OHMVR Division HQ Office</b>													\$145,623	\$0	\$309	\$145,932	\$17,980,617	n/a	113.0	28.5													
<b>HOLLISTER HILLS OHMVR DISTRICT</b>																																	
Hollister Hills SVRA													244	SBT	6,361.5	260.0	0.0	0	1	0	0	0	5.0	127,925	22,644	150,569	\$242,448	\$58,218	\$1,003	\$301,669	-	-	-
<b>HOLLISTER HILLS DISTRICT TOTALS</b>			6,361.5	260.0		0	1	0	0	0	5.0	127,925	22,644	150,569	\$242,448	\$58,835	\$1,003	\$302,286	-	-	-												
<b>HUNGRY VALLEY OHMVR DISTRICT</b>																																	
Hungry Valley SVRA													521	LA VEN	18,386.2	0.0	0.0	150	0	0	0	0.5	388,722	19,173	407,895	\$162,338	\$34,977	\$110	\$197,424	-	-	-	
<b>HUNGRY VALLEY DISTRICT TOTALS</b>			18,386.2	0.0		150	0	0	0	0	0.5	388,722	19,173	407,895	\$162,338	\$34,977	\$110	\$197,424	-	-	-												
<b>OCEANO DUNES OHMVR DISTRICT</b>																																	
Oceano Dunes SVRA													264	SLO	2,402.5	275.4	14.8 O	1,000	0	0	0	0	0.9	1,090,824	198,395	1,289,219	\$680,649	\$46,469	\$22,599	\$749,717	-	-	-
<b>OCEANO DUNES DISTRICT TOTALS</b>			2,402.5	275.4	14.8 O	1,000	0	0	0	0	0.9	1,090,824	198,395	1,289,219	\$680,649	\$46,469	\$22,599	\$749,717	-	-	-												
<b>OCOTILLO WELLS OHMVR DISTRICT</b>																																	
Heber Dunes SVRA													444	IMP	0.0	341.5	0.0	8	0	0	0	0	0.0	34,932	0	34,932	\$0	\$0	\$0	\$0	-	-	-
Ocotillo Wells SVRA													439	IMP SD	47,043.6	0.0	0.0	110	0	0	0	0	0.0	121,287	194,865	316,152	\$13,860	-\$30	\$85	\$13,915	-	-	-
<b>OCOTILLO WELLS DISTRICT TOTALS</b>			47,043.6	341.5		118	0	0	0	0	0.0	156,219	194,865	351,084	\$13,860	-\$30	\$85	\$13,915	-	-	-												
<b>TWIN CITIES OHMVR DISTRICT</b>																																	
Carnegie SVRA													272	ALA SJ	4,942.1	36.0	0.0	50	0	0	1	0	0.0	120,572	7,229	127,801	\$183,673	\$59,303	\$3,071	\$246,047	-	-	-
Prairie City SVRA													367	SAC	834.8	1.3	0.0	0	0	0	1	1	0.0	135,565	0	135,565	\$103,849	\$28,393	\$1,987	\$134,229	-	-	-
<b>TWIN CITIES DISTRICT TOTALS</b>			5,776.9	37.3		50	0	0	2	1	0.0	256,137	7,229	263,366	\$287,521	\$87,696	\$5,058	\$380,275	-	-	-												
<b>OHMVR DISTRICTS (5) TOTALS</b>			79,970.7	914.3	14.8 O	1,318	1	0	2	1	6.4	2,019,827	442,306	2,462,133	\$1,532,440	\$227,948	\$29,163	\$1,789,550	\$17,980,617	10.0%	113.0	28.5											

This page intentionally left blank.

**UNITS AND PROPERTIES OF THE CALIFORNIA STATE PARK SYSTEM**

Fiscal Year 2001/02

DISTRICT/Sector/Park Unit	Unit No.	County	ACREAGE			PUBLIC USE FACILITIES						VISITOR ATTENDANCE			REVENUE				Authorized Base Budget		Authorized Staffing Levels	
			DPR Owned	Other	Waterfront Feet (000)	Individual Camp Sites	Group Camp Sites	Non-Camping Overnight Facilities	Individual Picnic Sites	Group Picnic Sites	Non-Motor. Trail Miles	Day Use	Camping	Total	User Fees	Concessions	Misc.	Total	Operating Costs (\$)	Revenue as % of Oper. Cost	Perm Full Time	Temp PY Equiv.
<b>ANGELES DISTRICT TOTALS</b>			65,725.8	13,287.3	218.9 L 95.6 O	629	10	0	1,146	10	199.8	3,977,771	487,006	4,464,777	\$1,150,545	\$622,593	\$160,082	\$1,933,220	\$7,304,714	26.5%	99.8	37.4
<b>BAY AREA DISTRICT TOTALS</b>			30,086.3	3,469.5	103.0 L 130.5 O 0.8 R	330	12	6	337	26	227.2	3,469,733	90,053	3,559,786	\$781,382	\$1,065,513	\$40,804	\$1,887,700	\$4,348,035	43.4%	61.0	21.6
<b>CALAVERAS DISTRICT TOTALS</b>			6,884.1	20.6	26.4 R	160	2	8	56	2	52.0	734,610	58,175	792,785	\$208,765	\$263,079	\$3,146	\$474,990	\$1,784,000	26.6%	27.0	6.4
<b>CAPITAL DISTRICT TOTALS</b>			315.2	1.0	1.1 R	0	0	0	0	0	0.0	1,443,424	0	1,443,424	\$569,784	\$38,077	\$4,349	\$612,210	\$6,605,328	9.3%	85.2	31.9
<b>CHANNEL COAST DISTRICT TOTALS</b>			5,742.5	759.9	132.3 O 1.6 R	797	13	0	274	2	46.8	1,428,883	843,365	2,272,248	\$2,125,048	\$84,369	\$24,784	\$2,234,202	\$5,585,754	40.0%	74.0	41.6
<b>COLORADO DESERT DISTRICT TOTALS</b>			618,381.2	19,844.9	102.2 L 44.0 R	2,300	16	7	236	9	916.3	1,562,990	483,970	2,046,960	\$798,899	\$347,032	\$239,437	\$1,385,368	\$5,499,751	25.2%	68.3	33.5
<b>FOUR RIVERS DISTRICT TOTALS</b>			96,514.8	30,356.5	521.9 L 54.7 R	461	26	0	271	5	365.4	708,984	116,306	825,290	\$430,505	\$15,289	\$44,272	\$490,066	\$3,399,292	14.4%	49.7	17.6
<b>GOLD FIELDS DISTRICT TOTALS</b>			14,497.6	64,522.6	712.4 L 562.5 R	397	10	4	520	12	338.5	3,657,476	158,149	3,815,625	\$1,590,256	\$145,169	\$43,620	\$1,779,044	\$6,534,175	27.2%	101.4	33.8
<b>INLAND EMPIRE DISTRICT TOTALS</b>			16,425.4	5,240.0	121.4 L	641	25	0	2,116	5	130.0	1,689,002	354,020	2,043,022	\$1,258,740	\$47,980	\$34,625	\$1,341,345	\$7,577,546	17.7%	119.0	45.2
<b>MARIN DISTRICT TOTALS (a)</b>			14,103.3	149.3	64.1 O	145	6	50	215	12	132.8	2,331,602	133,362	2,464,964	\$478,816	\$211,038	\$16,241	\$706,095	\$3,672,500	19.2%	53.0	18.1
<b>MENDOCINO DISTRICT TOTALS</b>			12,083.2	4,439.2	6.0 L 180.3 O 131.4 R	549	8	104	41	0	59.3	2,676,325	263,561	2,939,886	\$642,771	\$41,763	\$16,882	\$701,416	\$2,355,502	29.8%	35.0	14.7
<b>MONTEREY DISTRICT TOTALS</b>			14,802.4	2,544.2	165.1 O 56.1 R	474	3	374	78	5	87.8	5,561,023	242,942	5,803,965	\$932,290	\$1,688,980	\$54,629	\$2,675,899	\$6,243,548	42.9%	86.0	24.1
<b>NORTH COAST REDWOODS DISTRICT TOTALS</b>			102,358.4	275.6	86.0 L 193.3 O 459.9 R	1,288	11	1	117	10	274.2	1,352,048	406,228	1,758,276	\$1,442,750	\$20,647	\$7,630	\$1,471,028	\$4,936,510	29.8%	74.0	28.4
<b>NORTHERN BUTTES DISTRICT TOTALS</b>			17,906.6	29,548.7	961.9 L 120.7 R	1,692	26	0	378	7	149.7	1,760,129	161,604	1,921,733	\$738,297	\$444,063	\$20,624	\$1,202,984	\$4,897,195	24.6%	66.0	32.0
<b>ORANGE COAST DISTRICT TOTALS</b>			3,290.7	3,452.0	95.4 O	735	3	0	166	21	62.5	10,589,819	442,113	11,031,932	\$4,061,527	\$1,101,215	\$77,769	\$5,240,511	\$9,970,486	52.6%	114.0	111.9
<b>RUSSIAN RIVER DISTRICT TOTALS</b>			19,804.9	1,697.0	166.7 O 26.6 R	326	1	0	195	1	65.2	3,824,500	154,398	3,978,898	\$490,462	\$3,074	\$18,035	\$511,571	\$3,370,707	15.2%	43.0	21.1
<b>SAN DIEGO COAST DISTRICT TOTALS</b>			2,798.4	1,634.0	83.8 O	397	2	0	186	34	23.4	12,619,644	554,988	13,174,632	\$1,842,050	\$2,425,295	\$44,408	\$4,311,754	\$6,827,843	63.1%	90.0	64.1
<b>SAN JOAQUIN DISTRICT TOTALS</b>			8,008.5	6,857.5	233.0 L	227	7	0	221	3	2.0	655,500	57,245	712,745	\$386,366	\$52,768	\$22,267	\$461,401	\$3,355,803	13.7%	42.0	8.0
<b>SAN LUIS OBISPO COAST DISTRICT TOTALS</b>			12,390.2	593.5	1.2 L 183.5 O	434	7	0	11	16	75.1	3,392,160	361,801	3,753,961	\$1,139,320	\$381,845	\$107,787	\$1,628,952	\$2,718,068	59.9%	37.0	11.9
<b>SAN SIMEON DISTRICT TOTALS</b>			712.5	45.5	13.2 O	205	0	0	47	0	3.4	1,798,645	130,245	1,928,890	\$5,537,992	\$1,215,182	\$220,912	\$6,974,086	\$10,564,205	66.0%	109.0	101.2
<b>SANTA CRUZ DISTRICT TOTALS</b>			47,700.7	17.0	10.6 L 124.1 O 47.1 R	689	21	36	350	11	342.4	8,459,595	598,208	9,057,803	\$1,445,666	\$439,955	\$28,361	\$1,913,982	\$7,497,107	25.5%	104.0	46.1
<b>SIERRA DISTRICT TOTALS</b>			13,795.0	19,130.0	59.1 L 9.3 R	704	14	0	146	0	67.3	1,426,960	247,852	1,674,812	\$956,171	\$733,256	\$44,031	\$1,733,458	\$4,816,425	36.0%	53.0	22.0
<b>SILVERADO DISTRICT TOTALS</b>			19,230.1	768.1	23.9 L 17.8 O	244	3	0	118	17	106.7	1,479,037	129,633	1,608,670	\$488,028	\$29,240	\$7,934	\$525,202	\$3,789,289	13.9%	57.5	18.6
<b>NON-OHVMR DISTRICT (23) TOTALS</b>			1,143,557.5	208,653.6	3,161.5 L 1,645.7 O 1,542.2 R	13,824	226	590	7225	208	3,727.6	76,599,860	6,475,224	83,075,084	\$29,496,432	\$11,417,423	\$1,282,628	\$42,196,483	\$123,653,783	34.1%	1,648.9	791.2

(a) The Marin District visitor attendance totals for this on-line version of the Statistical Report have been adjusted to correct an accidental doubling of visitor attendance figures that appeared in the printed version.

This page intentionally left blank.



**UNITS AND PROPERTIES OF THE CALIFORNIA STATE PARK SYSTEM**

Fiscal Year 2001/02

	ACREAGE			PUBLIC USE FACILITIES						VISITOR ATTENDANCE			REVENUE				Authorized Base Budget	Revenue as % of Oper. Cost	Authorized Staffing Levels	
	DPR Owned	Other	Waterfront Feet (000)	Individual Camp Sites	Group Camp Sites	Non-Camping Overnight Facilities	Individual Picnic Sites	Group Picnic Sites	Non-Motor. Trail Miles	Day Use	Camping	Total	User Fees	Concessions	Misc	Total	Operating Costs (\$)		Perm Full Time	Temp PY Equiv.
<b>STATE PARK SYSTEM TOTALS</b>	1,223,528.2	209,567.8	3,161.5 L 1,660.5 O 1,542.2 R	15,142	227	590	7,227	209	3734.0	78,619,687	6,917,530	85,537,217	\$31,028,871	\$11,645,371	\$1,311,791	\$43,986,033	\$141,634,400	31.1%	1874.9	848.2

Note: The visitor attendance totals for this on-line version of the Statistical Report have been adjusted to correct an accidental doubling of visitor attendance totals for the Marin District figures that appeared in the printed version.

This page intentionally left blank.

# CHAPTER 4

## Basic Statistics- Definition of Terms

This page intentionally left blank.

## CHAPTER 4

### BASIC STATISTICS – DEFINITION OF TERMS

This statistical report uses a variety of data categories to measure the scope, scale, activities and operations of the State Park System during the course of the fiscal year. These data categories are indicated by the column headings in the extensive table found in Chapter 3. The text of that chapter indicated which of these data sets were current as of the first of the fiscal year, July 1, as of the end of the fiscal year, June 30 or reflect what has taken place in the course of the year. The table itself indicates the level at which this data is collected, from the individual unit, from the sector, or from the district as a whole.

This chapter provides definitions or characterizations of each of this report's data categories, along with some information on how their information is created and processed within the Department. Where appropriate, background information on certain data categories is provided to allow the reader to know something of what is behind the data and to understand the strengths and weaknesses of the numbers that are available for use. These definitions appear below.

\* \* \* \* \*

Park Name - With rare exception, classified units are named by the California State Park and Recreation Commission, based on recommendations made by the Director. A very few units have been named by the Legislature. The unit's name usually reflects a geographic feature or an individual or group of people historically associated with the unit. Prior to their classification, newly acquired properties are given temporary names for working purposes. Information source: Park and Recreation Commission; Office of Acquisition and Real Property Services.

Park Classification - With rare exception, units are classified by the California State Park and Recreation Commission, based on recommendations made by the Director. A very few units have been classified by the Legislature. These recommendations are based on the options found in Public Resources Code Section 5019 *et seq.* Each unit is given a classification that best reflects the unit's primary values and the purposes for which the property was acquired and is to be managed. Information source: Park and Recreation Commission

Unit Number - The unit number is the last three digits of a unique six-digit number assigned by the Accounting Services Section to each of the classified units and major unclassified properties of the State Park System. Such six-digit numbers are also assigned to the Department's various other organizational components - divisions, sections, and offices. A major purpose of these numbers is to identify and track money, staff and other resources allocated to and used by these various activity centers. Information source: Accounting Services Section.

County - This shows the county or counties in which the unit or property is located. The abbreviations for the county names conform to the standard used throughout

California state government. Information source: Office of Acquisition and Real Property Services.

Acreage- This is the surface acreage of the lands and waters which constitute each classified unit and major unclassified property. This information is based on assessor's maps, descriptions, and any notations regarding easements or claims on these properties. The acreage of the lands in the California State Park System is also recorded, on a parcel by parcel basis, in the assessors' books of the counties where the lands are situated.

The addition or removal of acreage from the System's database is a continuous process. In any instance, it is accomplished at the time that the appropriate records are received and processed by the Department. This may not coincide with the time of the recording of deeds, payment of funds, or movement of other paperwork. Information source: Office of Acquisition and Real Property Services.

- DPR-Owned – those lands which are owned in fee by the Department. Some of these lands, however, may be subject to easements and certain other restrictions.
- Other – those lands which are owned in fee by another government agency, non-profit organization or private entity, but which are operated as part of the State Park System through an agreement with the Department. The form of these agreements includes leases, permits, easements, operating agreements and memorandums of understanding.

Waterfront Feet (000) - Water, in the form of lakes, streams and ocean shoreline are important park features, from both an environmental and recreational standpoint. Data on the presence and magnitude of this feature is measured in terms of its frontage, the edge it presents to or within the unit or property. The three types of waterfront feet are reported separately - for natural lakes and reservoirs ("L"), for rivers ("R"), and for the shore of the Pacific Ocean and its major estuaries ("O"). The data in this column is rounded to the nearest thousand feet (000). Information source: Office of Acquisition and Real Property Services.

Public Use Facilities - The properties of the State Park System provide a wide range of public use facilities, including picnic sites, camp sites, shelters, trails, boat launching ramps, restrooms, roads, parking areas, interpretive centers and campfire centers. The three most common general types of public use facilities are those used by visitors for overnight use, for picnicking and for moving about the park on trails, by means of foot, horse or bicycle.

Earlier statistical reports were inconsistent in their definitions of these three types of facilities. Such reports did not have data on certain subcategories of facilities; in the case of overnight use facilities, group camps were seldom reported and data on structural overnight facilities had never been collected. To obtain the current and detailed data that was needed for this report, a special unit-by-unit survey was accomplished in the spring of 2003, seeking information that was current as of June

30, 2002. The details of this survey are contained in Appendix B. Information source: State Park System Planning Section, Planning Division.

- Individual/Family Camp Sites - This category is the sum of seven subcategories. Each subcategory is briefly described here and fully described in Appendix B.
  1. Primitive/Undeveloped – each site accommodates up to eight people and two vehicles; tent space, stove, table and nearby piped water, chemical or vault toilet. Some of these amenities may not be available in every case.
  2. Developed – each site accommodates up to eight people and two vehicles; designated parking, tent or RV space, stove, table and nearby piped water, and restroom with flush toilets and hot water; may include showers and laundry sinks.
  3. RV Hookup – each site accommodates up to eight people and two vehicles in a designated space and provides paved spur for RV, as well as hookups for electricity, water and sewage disposal.
  4. Environmental/Trail – a designated primitive site in a relatively undisturbed setting.
  5. Hike/Bike – a designated area with tent space, table, fire rings or stove with water and toilet facilities nearby.
  6. Floating Campsites – tent space, table, stove and toilet facilities on a floating platform, accessible only by boat.
  7. Dock Berths, Offshore Mooring Buoys – a place to put a boat, which itself may serve for overnight use; some units have an assigned campsite on land.
- Group Camp Sites – This category is the sum of two subcategories. Each subcategory is briefly described here and fully described in Appendix B.
  1. Tent or RV Use - primitive or developed – an area with space for many tents or RVs, providing many tables, stoves, water sources, and restrooms, designed to be used by a large group of people; often available by reservation only.
  2. Horse camps – primitive or developed – as above, but with added facilities needed for the management of horses.
- Non-Camping Overnight Facilities - This includes tent cabins, rustic cabins, shelters, yurts and bark houses, as well as lodges, motel facilities and modern cabins.
- Individual or Family Picnic Sites – These are small areas with tables, stoves or fire rings, with nearby parking, water and restrooms. These sites are sometimes used by groups but intended for individuals or families.
- Group Picnic Sites - These are large areas with a number of tables, stoves or fire rings, with nearby parking, water and restroom facilities, often used by reservation only.

- Non-Motorized Trails – This category is the sum of three subcategories. These facilities are unpaved pathways or trails for use by one or more of three types of users: foot, horse and bicycle. This category includes designated interpretive trails, as well as short trails which may be paved or hardened for the use of visitors with disabilities. It includes unimproved (dirt or gravel) service roads and fire roads which are used as trails, but does not include paved service roads that are intended as trails but may be unofficially used as such by visitors. It does not include any trails used by off-highway motor vehicles.

Note that the Planning Division’s survey of public use facilities provided certain figures that were at variance from those which had been developed in recent years. The data developed by the Division’s survey will be considered to be correct and official.

Visitor Attendance - Data on visitor attendance reflects an estimate of the number of individual visits (not the number of individual visitors) to the units of the State Park System during the fiscal year. Using this approach, an individual visiting three units in a day is recorded in the attendance data three times rather than one.

Attendance data is collected at the unit level, sent to the district offices, and thereafter conveyed to the Field Services Division in Headquarters. Some units or districts may collect a variety of more detailed attendance or visitor use data (e.g. use of boat launching ramp), but only the data on three required categories – free day use, paid day use, overnight use - are conveyed to headquarters to be used for systemwide records. Source: Field Services Division.

The two different categories of visitor attendance reported in this statistical report are generated in different ways, and their consistency and accuracy differ widely.

- Day Use – This is the number of day (non-overnight) visits to the unit in question. “Day use”, as used in this column, includes both free day use and day use for which a fee is paid for entry into the park. Day use includes park entry by any means, by motor vehicle of any type, on foot, on bicycle, by boat or on horseback. A single visit is counted regardless of the length of stay or variety of activities undertaken. Historically, approximately 30% of day use is paid and the remainder is free. Day use admission based on the use of annual passes is included in this data.
- Camping - This is the number of overnight visit to the unit in question, visitors using the many types of sites and structures listed above, as well as using temporary overflow areas.

Not all units collect visitor attendance information for day use and overnight use in the same way. In a few instances, usually historic units with per-person admission charges, there are actual counts of visits. In most units, however, attendance figures are the results of making estimates, using various techniques and producing results of widely different levels of accuracy. The estimation techniques may range in quality from one unit to the next and they may be changed at any unit at any time.



While the accuracy of these figures has substantial limitations, it is believed that in the aggregate, over time, orders-of-magnitude and broad trends in visitor use can be determined with some validity.

For the entire System, total attendance is underestimated for three reasons.

1. Little or no data is collected from System-operated units which are small, remote and little used, where gathering this information would not be cost-effective;
2. Data is rarely collected from units which, in large part or in their entirety, are managed not by the System but by another agency or organization through an operating agreement. Many of these units are heavily used ocean beach units.
3. The failure to report all of the visitors who spend the night not through traditional camping but instead through the occupancy of such structures as lodges, cabins and hostels. A new reporting system should improve this situation.

Revenue - Revenue at the field level is the income flowing into a park unit, or into a sector or a district office as a result of parklands and facilities being used by visitors or organizations for a wide range of approved purposes. Information on field-level revenue is generated at the district level and is reported to the Accounting Section and subsequently to the Budget Section in Headquarters. Information source: Budget Section.

The revenue figures used in this report are year-end totals, current as of June 30 of the year, as reported each year in the "Actual" column in the *Governor's Budget*. Four of the six CalStars revenue categories shown there are needed for this statistical report, reflecting revenue coming directly from the "field." In the budget document, there is separate information for the basic 23-district State Park System and for the 5-district OHMVR Division, information which is combined for the purposes of this statistical report. A third and very small category revenue, that from the Department's systems of Sno-park facilities, is not included.

- Fees – These are admissions and use fees paid by the visitor, including fees for admission, parking, camping and the use of other park facilities such as boat launch ramps and pay showers. This category includes money from the sale of day use admission passes and Hearst Castle ® tours. This revenue source is represented by CalStars category 140600, State Beach and Park Service Fees.
- Concessions – The bulk of this revenue category is the income from the rentals paid by concessionaires, private entrepreneurs who under contract provide goods and services to park visitors on park lands. This category also includes the leases of System lands, dwelling rental, and receipts for special events and filming. In the OHMVR Division, the bulk of this money comes from the sale of OHV licenses ("green stickers") and from the interest on funds which it has in

reserve. This revenue category is represented by CalStars category 152300, Miscellaneous Revenues from Use of Property & Money.

- Miscellaneous – This revenue is the combination of two CalStar categories, 161400, Miscellaneous Revenue, and 164200, Parking Violations.

Revenue earned by or funds transferred to the State Park System at the headquarters level is not reported in this statistical report.

Operating Costs - These are funds from the Department's annual budget which provide for the operation and management of the "field" portion of the State Park System, as described in the Introduction to this report. These monies fund the staff, equipment, utilities and supplies needed to serve the visiting public, to maintain and renovate facilities, and to protect and manage the system's natural and cultural resource base. The operating costs reported in this statistical report are reported each year in the "Actual" column in the *Governor's Budget*. Information Source: Budget Section.

These funds are allocated by the Field Services Division directly to the individual districts, thereby allowing each district the flexibility to make allocations and reallocations throughout the year to its various units based on changing need.

Revenue as a Percent of Operating Costs - A computation made to indicate in a rough way the degree to which a State Park System as a whole or any of its districts are "self-supporting", a point where revenue equals or exceeds operating costs. The district figure ranges widely, depending largely on the revenue-generating capability of the units and properties within a district. Also important in determining the size of this figure is the degree to which the operation of the district's set of units is particularly labor-intensive and whether the district's units and properties are located close to one another or are widely distributed. Source: Planning Division computations.

Staffing - The operation and management of the units and properties of the State Park System, as well as the district and sector offices, requires a large and diverse professional staff. The two staffing categories of concern here are permanent full-time staff (indicated as the number of positions) and temporary staff (measured in terms of person-year equivalents). No information is readily available for a third and very important category of staffing, the large amount of seasonal staffing that is used mostly during the summer months. Information on the annual quantity of what might be deemed another types of staffing, that of non-paid volunteer work, is available from the Interpretation and Education Division.

The data provided in this report is for positions that were authorized rather than those that were actually filled during the fiscal year. These figures are reported annually in the *Governor's Budget*. Information source: Budget Section.

- Permanent, full time – These are individuals who have permanent civil service status in a wide range of job classifications. They work year-around for the standard 1816 hours per year.
- Temporary/PY equivalent – “Temporary” includes permanent intermittent, seasonal and retired annuitant positions. Many of these employees are normally required during the parks’ busy season, when visitor use is heaviest. A person-year (PY) equivalent is 1816 hours of work, whether it requires two, three or more individuals to accomplish it.

This page intentionally left blank.

# CHAPTER 5

## Other Available Statistics

This page intentionally left blank.

## CHAPTER 5

### OTHER AVAILABLE INFORMATION

In addition to the basic statistics or data sets shown in the table in Chapter 3, the State Park System regularly collects a wide variety of other useful information which records and measures many of its activities and operations. Some of this information is portrayed in descriptive or graphic terms as well as in numerical form. Certain material is available through the Department's Internet and Intranet sites, with a wider range being available directly from specific sources within the Department.

#### A. Internet/Intranet

Two general sources of information about the Department and the State Park System are the Department's Internet web site and its internal Intranet site. These sites contain useful information about the Department and the State Park System. They contain information about the individual park units and their attractions, and about a variety of special topics of current relevance to the System. Also available is information about the Department's organizational components and some of the work which they do. These latter references make available the contents of a variety of reports, studies and data sets, as well as general information about the Department and its State Park System. Most of the contents of the Internet and Intranet are expanded and updated on a periodic basis.

The Internet site is available to the general public at <http://www.parks.ca.gov>. The Intranet is available only for those with access to the Department's internal communication system, and is found at <http://isearch.parks.ca.gov>. With both sites, the approach to seeking information is to access the site and conduct a search to determine if it contains what is needed.

#### B. Direct Sources

A wide variety of specialized data and information can be obtained directly from the organizational units of the Department that produce it. A phone call or email is the search mechanism appropriate here.

In the following listing, selected areas or topics of information are specified and very briefly described. In the case of each item, the Department's organizational source or location of the information is indicated, in terms of the appropriate division, office, section or unit. In addition, a specific resource person is indicated, along with their phone number and email address. These

organizational and personal references are current as of the time of this writing, August of 2003, and are subject to change over time.

Most of the information referred to below may be made available upon request. Some of it may be available immediately in hard copy, while much of it exists only in a computer database which can be accessed only by the program manager. In many cases, the data can be tailored to the specific needs of the individual making the request.

These more specialized areas of information and their organizational sources are as follows.

\* \* \* \* \*

Accidents - Included here is information from the field on calls for assistance, reports taken and filed, and actions taken as a matter of public safety. Assistance may include first aid, getting needed help, search-and-rescue efforts and finding lost individuals. Incidents involving motor vehicles and boats are reported separately in two different categories.

- Contact Randy Sederquist, Public Safety Section, Field Services Division, Sacramento (916) 653-0398; rsede@parks.ca.gov.

Aerial Photo Files - Aerial photographs provide important information on land use and conditions in and around State Park System lands. Aerial photographs are routinely purchased by the Department for many planning and management purposes. The primary repository and catalogue system for 9"x9" color, infrared, and black and white aerial prints are maintained by the Natural Resources Division in Sacramento.

- Contact: Jim Trumbly, Natural Resources Division, Sacramento (916) 653-0875; jtrum@parks.ca.gov.

Archaeological Collections - This database contains a master list of all archaeological artifact collections, by park unit, which is maintained by the Department's Archaeological Collections Research Facility. This archive also includes all of the notes, records and photos related to archaeological collections and fieldwork.

- Contact Glenn Farris, Senior State Archaeologist, Cultural Resources Division, West Sacramento (916) 375-5921; gfarr@parks.ca.gov.

Condition Assessment Database - In 2002, the Department conducted an extensive systemwide survey of natural resources in the State Park System to establish a baseline on the general condition of park lands and detailed information on selected natural resource features. Information on such things as rare and endangered species, non-native plants and animals, natural habitats, geologic features and pollution, was collected from park resource specialists and



entered into a database. Information on over 195 park units is included in the database.

- Contact: Art Fong, Natural Resources Division, Sacramento (916) 653-9454; afong@parks.ca.gov.

Cooperating Associations - This database contains information on the formal independent nonprofit citizens' groups which contract with one or more park units to assist in the funding of those units' interpretive and educational programs and services. Information is available on the identity of each association, its name, address, phone number(s) and e-mail address. Financial information, as reported by the associations, is also available.

- Contact: John D. Mott, Cooperating Associations Program Manager, Partnership Support, Interpretation and Education Division, Sacramento (916) 654-5379; jmott@parks.ca.gov.

Crimes - This database contains information on calls made, reports made, and actions taken by park staff relative to crime in and near State Park System units. Data includes information on investigations, warnings given, and arrests for alleged misdemeanors and crimes.

- Contact Randy Sederquist, Public Safety Section, Field Services Division, Sacramento (916) 653-0398; resed@parks.ca.gov

Cultural Resources: Sites, Structures, Registrations - Information on the number and type of cultural resources in the State Park System is found in the "Index to Historic and Archaeological Resources Owned by the California Department of Parks and Recreation. This index lists, by park unit, the number of (1) archaeological sites, (2) historic structures, (3) California Historic Landmarks, (4) National Register and California Register properties, (5) National Historic Landmarks, and (6) Cultural Preserves.

- Contact: John W. Foster, Senior State Archaeologist, Cultural Resources Division, Sacramento (916) 653-4529; jfost@parks.ca.gov

Facilities – Accessibility - In compliance with the federal Americans with Disabilities Act, the department in 2000 made a very detailed survey rating the accessibility by disabled persons of the facilities in the then-266 units of the State Park System. The level of access was rated as high, medium or low and the information used to set priorities for remedial action.

- Contact Linda Canar, Program Manager, Accessibility Section, Acquisition and Development Division, Sacramento (916) 445-8949; lcana@parks.ca.gov

Facilities – Data for Maintenance Purposes - For the purpose of programming the department's facility maintenance activity, the tens of thousands of structures, utilities and other built facilities in the State Park System were surveyed and recorded. In this particular information system, numbers of similar facilities (e.g. individual campsites) were defined as a single facility.

- Contact Valerie Bradshaw, Technical Services Section, Field Services Division, Sacramento (916) 653-8542; vbrad@parks.ca.gov.

Facilities – Museum Collections - Data on the condition of facilities used to house museum collections in the State Park System is found in the Museum Collections Facility Index (MCFI) database. Facilities which house collections are surveyed each year for compliance with museum standards for environmental conditions, security, fire protection, and documentation.

- Contact: Wendy W. Franklin, Museum Curator, Cultural Resources Division (916) 375-5916; wfran@parks.ca.gov.

Facilities – Three Visitor Facility Types in Detail - Through specific annual surveys, actual counts are made of the numerous different types of (1) overnight accommodation facilities, (2) picnic facilities and (3) the number and cumulative length of non-motorized trails in each classified unit and major unclassified property of the State Park System. This data includes information on the capacity of overnight and picnic facilities to accommodate visitors.

- Contact Philomene Smith, State Park System Planning, Planning Division, Sacramento (916) 651-8694; psmit@parks.ca.gov.

Flora and Fauna Databases - California State Parks and its contractor, the University of California, Davis, developed computer applications to record names of vertebrates and vascular plants that are found within park units. To date, CalParks Flora and CalParks Fauna contain inventory information for over 170 park units, a total of over 50,000 records. A companion application detailing actual observations of plant and animals within park units, "Observe-it", holds records for over 90 park units. This second database has not been as widely used; at present there are over 4,500 animal observations and 190 plant records in the Observe-it database.

- Contact: Cynthia L. Roye, Associate State Park Resource Ecologist Natural Resources Division, Sacramento (916) 653-9083; croye@parks.ca.gov.

Incidents - This database contains information on public assistance events in park units that are not covered in any other public safety category, such as accidents or crimes.

Contact Randy Sederquist, Public Safety Section, Field Services Division, Sacramento (916) 653-0398; rsede@parks.ca.gov.

Interpretive programs - Data is available on twelve types of formal and informal programs that take place in park units, things such as guided hikes, craft demonstrations, Junior Ranger programs and off-site school programs. Information is provided on the number of each type of program given, hours of programming completed, the characteristics of the presenters and visitor attendance at the programs.

- Contact: John Werminski, Regional Interpretive Specialist, Interpretation and Education Division, Sacramento (916) 653-8959; [jwerm@parks.ca.gov](mailto:jwerm@parks.ca.gov).

Legislative Districts - Each State Park System unit and property is located in one or more of three types of legislative districts - U. S. Congressional districts, State Senate districts and State Assembly districts. Information is available on the districts in which any park or property is located.

- Contact Vicki Perez, Legislation Office, Sacramento (916) 653-6887; [vipere@parks.ca.gov](mailto:vipere@parks.ca.gov).

The Museum System (TMS) database - Information about California State Parks' artifact and photographic collections, archaeological sites, and paleontological sites is available on "The Museum System," a database managed by the Cultural Resources Division. The database contains records of over 400,000 objects and over 12,000 sites located throughout the State Park System. Images are linked to approximately 100,000 records. The database may be accessed by authorized State Park employees through the wide-area network (WAN) or Internet connections.

- Contact: Yuk-Hoi (Winnie) Yeung, Museum Curator, Cultural Resources Division, (916) 654-4728; [wyeun@parks.ca.gov](mailto:wyeun@parks.ca.gov).

Park Features, Attractions and Associations:

Information on a wide range of categories of features and attractions found in units of the State Park System (e.g. visitor centers, Native American sites, habitat types, blacksmithing demonstrations) is found in the 310-page *Park-to-Park Index*.

- Contact: Mary Helmich, Interpretive Programs Manager, Interpretive Planning and Programs, Education and Interpretation Division, Sacramento (916) 653-3913; [mhelm@parks.ca.gov](mailto:mhelm@parks.ca.gov).

Photographic Archives:

Thousands of images of park units, cultural artifacts and key park-related persons are available. Media includes b/w prints and negatives, 35mm slides and color prints from slides.

- Contact: Will Jorae, Museum Curator I, Education and Interpretation Division, Sacramento (916) 375-5930; [wjorae@parks.ca.gov](mailto:wjorae@parks.ca.gov).

Reservations for Campsites, Hearst Castle ®

A large share of the system's campsites and all of the tours of Hearst Castle ® are available by reservation. Information is available on the number of camp units subject to reservation and the number of reservations actually made for camping or Hearst Castle ® tours.

- Contact Jim Luscutoff, Reservations Manager, Field Service Division, Sacramento (916) 653-9463; [jlusc@parks.ca.gov](mailto:jlusc@parks.ca.gov).

This page intentionally left blank.

# CHAPTER 6

## History of this Report

This page intentionally left blank.

## CHAPTER 6

### HISTORY OF THIS REPORT

The first annual statistical report for the State Park System was published for the 1961-62 fiscal year. Prior to that, information on the System's acreage, facilities, attendance, income, expenditures and staffing was available largely from scattered sources within the Department and were combined into a single publication only occasionally for special studies or reports. Exhibit 1, below, provides a list of the documents recognizable as earlier statistical reports.

Following the publication of the System's first specific annual statistical report, for fiscal year 1961-62, identical or similar reports were issued covering the years through 1989-90. Most of these reports provided information for a single fiscal year, although some covered three or four fiscal years in a single volume. In a multi-year report, some items of data for a given fiscal year may be different than that which had been presented for that particular fiscal year in a previous year's report. This reflects the fact that the data was modified after the close of the original fiscal year by the addition of other data arriving after the end of the year. By convention, the data that is considered valid and used is that which is reported for the year in which the report was published, usually the smallest figure in any such series.

Over this 29-year period, these statistical reports were altered somewhat as to their title, the range of information and their formatting. As the series developed, there was more analysis of the year's data and its comparison with that from previous years.

Due to an administrative reorganization and subsequent budgetary limitations, the creation and publication of the annual statistical report ceased just over a decade ago. No statistical report has been published since the 1989-90 edition. Since that time, it became clear that such a report was needed, that it was very useful to have such information assembled annually and made readily available to staff at all levels, as well as to interested persons outside of the department.

In late 2002, the Department's Planning Division undertook to reinstitute this publication, to develop and publish once again a State Park System statistical report with at least the scope of the last one in the series, published eleven years earlier. The present document is the first product of this effort.

The scope of the document has been expanded to provide information and analysis well beyond that found in any prior statistical report for the system. Among these additions are:

- The formatting of each district's units and properties (where appropriate) in terms of the sectors into which the district was organized at the end of the fiscal year;
- Very detailed information on the relevant definitions, source of and quality of each set of basic data, often with cautions as to its use;
- Information on the availability, source and quality of a wide range of regularly collected State Park System data that is important but the inclusion of which was beyond the scope of the basic data set of the statistical report;
- A more detailed analysis of the year's basic data and some comparison with relevant data from earlier years, an effort that will be more useful in the coming years; and
- The inclusion of a large four-color map of California showing the System's district boundaries and the units and properties found within each district.

As mentioned in the Introduction, the statistics in this report are considered the Department's data "of record" and will be used as the basis for the reports, studies and analyses subsequently developed by Department staff.



Exhibit 1

**STATISTICAL REPORTS  
FOR THE STATE PARK SYSTEM**

<u>Year</u>	<u>Document Title</u>
<u>A. Division of Beaches and Parks</u>	
1949-50	} <i>Report on A Decade – May 2, 1960</i>
1950-51	
1951-52	
1952-53	
1953-54	
1954-55	
1955-56	
1956-57	
1957-58	
1958-59	
1959-60	not available
1960-61	not available
1961-62	<i>Annual Report 1961-62</i>
1962-63	<i>Annual Report 1962-63</i>
1963-64	<i>News and Views Statistical Report for the Division of Beaches and Parks 1963-64</i>
1964-65	<i>Statistical Information for the Division of Beaches and Parks: Fiscal Year 1964-65</i>
1965-66	<i>Division of Beaches and Parks: Statistical Report 1965-66 Fiscal Year</i>
<u>B. Department of Parks and Recreation</u>	
1966-67	<i>Statistical Report for 1966-67 Fiscal Year</i>
1967-68	<i>Statistical Report for 1967-68 Fiscal Year</i>
1968-69	<i>Statistical Report for 1968-69 Fiscal Year</i>
1969-70	<i>1969-70 Fiscal Year Statistical Report</i>
1970-71	<i>1970-71 FY Statistical Report</i>
1971-72	<i>Statistical Report 1971-72 Fiscal Year</i>
1972-73	<i>Statistical Report 1972-73 Fiscal Year</i>
1973-74	<i>Statistical Report 1973-74 Fiscal Year</i>
1974-75	<i>Statistical Report 74-75 Fiscal Year</i>
1975-76	<i>Statistical Report 1975-76 Fiscal Year</i>

1976-77	}	<i>Statistical Report 1976-77 Fiscal Year</i>
1977-78		<i>Statistical Report – Fiscal Years 1976-1977, 1977-1978, 1978-1979</i>
1978-79		
1979-80		<i>Statistical Report – Fiscal Year 1979-80</i>
1980-81	}	
1981-82		
1982-83		<i>Statistical Report - Fiscal Years 1980-81, 1981-82, 1982-83, 1983- 84</i>
1983-84		
1984-85	}	
1985-86		<i>Statistical Report – Fiscal Years 1984-85, 1985-86, 1986-87</i>
1986-87		<i>Statistical Report –Fiscal Years 1985-86, 1986-87, 1987-88</i>
1987-88		
1988-89		<i>State Park System Statistical Report – Fiscal Year 1988/89</i>
1989-90		<i>Statistical Report – Fiscal Year 1989/90</i>
1990-91	}	not published
1991-92		not published
1992-93		not published
1993-94		not published
1994-95		not published
1995-96		not published
1996-97		not published
1997-98		not published
1998-99		not published
1999-00		not published
2000-01	not published	
2001-02		<i>California State Park System Statistical Report: 2001/02 Fiscal Year</i>

(see Appendix A in *California State Parks Statistical Report – 2001/02*)

# APPENDICES

This page intentionally left blank.

## APPENDIX A

### SELECTED DATA – 1990/91 TO 2000/01

As indicated earlier in this report, there were no issues of the State Park System annual statistical report published during the immediate past eleven fiscal years. Because of the absence of these reports, from 1990/1991 through 2000/2001, the important data which they would have contained is not available. This makes it impossible to quickly find or construct a year-by-year series for the report's critical data categories, such as acreage, visitor attendance, revenue, operating costs and the like.

So that this missing data will not remain unavailable for even more years, an effort was made to locate it in the Department's hardcopy or electronic records. To locate or to create at least some portion of these missing data sets, a search was made of the active or archived records of the department. Following below in this appendix are a number of important categories of State Park System information that have been located or created so as to fill in as well as is possible the gap caused by the missing statistical reports.

There are a variety of problems which make impossible the creation of some of the missing data in a context and format which matches that of this present document. There are many limitations in the historic data, and some of these limitations would apply even if the annual figures were readily available. In many cases, the definitions of data terms were not clear or have changed over time, making difficult a good transition in a data set from one fiscal year to a subsequent year where new definitions apply. In other cases, there may be changes in the methods of collecting data from the original field sources and processing it at headquarters.

In the case of district-level information, there is an insurmountable problem of consistency in the geographic aggregation of earlier unit-level data at the district level. It is not possible to be consistent because of the various field-level management reorganizations which have taken place over the eleven-year period. These reorganizations have altered the number and configurations (and even names) of the districts, and thus changed the number and identity of the units and properties which each contains.

With these factors in mind, the eleven years of missing information for the key data sets which have been identified or created will be presented in the following tables only at the level of aggregation which reflects the State Park System as a whole. Where, over the course of the eleven years there have been changes in data definitions or collection processes, these matters are noted below the data tables as warning to the reader. In spite of the recognized, albeit unavoidable,

shortcomings in this data, it will be considered the official data, the data “of record”, for the purposes they represent.

These eleven-year data sets will be presented on the following pages in five sections, shown in the same sequence in which the data sets appear in the table in this report’s Chapter 3. These sections are:

1. Acreage
2. Public Use Facilities
3. Visitor Attendance
4. Revenue - Fees, Concessions, Miscellaneous
5. Operating Costs and Staff Levels

Where the reader seeks more detailed data than provided in these tables, contact should be made with the Department’s most appropriate division, office or section.

This Appendix A and its historic data will be published only in the 2001/02 edition of this statistical report series and will not be repeated in subsequent editions.

## Section 1 - Acreage

Additions or deletions of properties and their acreage are made to the Department's database not at the time of the actual change in their ownership or management, but at the time where the physical record of the transaction is received and processed by staff. Thus, at any given point in time, the acreage records will not be literally accurate, but may include lands which the department has paid for and is even managing, but for which the appropriate real estate record has not been received and processed.

In addition, the department's computer-based land ownership records are fluid in the sense that they are updated continuously, as new information becomes available. It is therefore impossible to produce an exactly correct figure for a past date. Because there were no records made of the System's acreage on June 30 of each of the previous years, the exact data needed for the following table does not exist. For this table, new acreage data has been created.

The data below has been generated for each of the eleven years based on what the records show not for June 30 of each year, but instead these figures were all produced for use in this report on the same day, May 6, 2003. For purposes of consistency, and lacking other sources, the acreage data in the above table will be considered definitive, the information "of record", for the years in question.

Fiscal Year	DPR Owned	Other	Total Acreage
2000/01	1,213,639.38	210,077.02	1,423,716.40
1999/00	1,206,028.75	209,548.04	1,415,576.79
1998/99	1,200,139.34	209,039.55	1,409,178.89
1997/98	1,195,760.56	208,698.19	1,404,458.75
1996/97	1,183,654.12	208,439.37	1,392,093.49
1995/96	1,172,308.09	208,439.11	1,380,747.20
1994/95	1,161,854.72	201,808.98	1,363,663.70
1993/94	1,153,456.49	201,367.06	1,354,823.55
1992/93	1,140,256.99	201,331.13	1,341,588.12
1991/92	1,136,421.82	199,860.38	1,336,282.20
1990/01	1,126,236.69	199,434.56	1,325,671.25

*Source: Office of Acquisition and Real Property Services*

Starting with this 2001/02 statistical report, the figures for the system's year-end acreage will be based on a printout of the land ownership record specifically taken on June 30, the last day of the fiscal year.

## Section 2 - Public Use Facilities

For the approximately three decades up to and including the 1989/90 fiscal year, a count was made at the end of each fiscal year of three basic types of the System's public use facilities and the resultant data was published in the annual statistical reports. These three types were broadly labeled as "camp", "picnic", and "trail." These three types of facilities were defined only in a general way.

Since the System's annual statistical reports were not published for the fiscal years from 1990/01 through 2000/01, no annual counts or estimates were made during this period. Nor can this data be created or reconstructed after the fact from existing materials. For this reason, no table of historic data, however approximate, can be presented here. It is nevertheless important to indicate the status of this information during the past decade.

Over the last two years, a substantial effort was made to collect information on the full range and very large number of different types of developed park facilities, facilities for both public and administrative staff use, and the utilities serving both. This computer-based Park Infrastructure Database system was developed mainly for the purposes of planning and scheduling the efforts needed to maintain the park system's facilities. Unfortunately, this information is not useable for the system's annual statistical report.

The problem is that this facility maintenance information system groups together as a single entity many identical or very similar facilities without distinction as to the number of their individual components. For instance, a large, developed camping area with 225 individual (or "family") units might appear in the system as two "facilities", one consisting of 100 camping units and the other of 125. This approach reflects the park manager's view on the best way to organize the maintenance of the entire set of campsites, doing them as two distinct groups. However, this aspect of the data system renders it unable to provide the more detailed information needed for this statistical report, which needs the figure of 225 individual sites and not that of two groups of many sites each.

For the purposes of the present 2001/02 statistical report, the Planning Division undertook a special survey to obtain the public use facility information in the detail that was needed for this publication. During the spring of 2003, the field districts completed a detailed survey form for every classified unit and major unclassified property in the State Park System. This form called for information on the existence and number of twenty-one variations three types of the System's public use facilities - overnight facilities, day use (picnic) facilities, and trails for any and all types of non-motorized users. To serve the purpose of this report, the data which was sought was to reflect the number of such facilities that existed on June 30, 2002. For full information on this survey, see Appendix B of this report.



### Section 3 - Visitor Attendance

Visitor attendance data is collected initially at the park unit level, thereafter reported to the district office for transmission to headquarters. In addition to the three basic categories of visitor data used in this report, managers may collect, for their own use only, data on any other categories of visitor attendance (e.g. use of boat launching ramps, visitation in a certain sector of the park).

Attendance figures are based heavily on estimates of such factors as the number of estimated vehicles per day and the average number of persons per vehicle.

Fiscal Year	Free Day Use	Paid Day Use	Overnight	Total
2000/01	51,797,073	20,628,887	6,388,308	78,814,268
1999/00	48,384,744	19,757,954	5,327,451	73,470,149
1998/99	42,329,599	15,964,323	5,750,780	64,044,702
1997/98	39,043,538	13,205,313	5,223,403	57,472,254
1996/97	43,245,919	13,928,613	5,704,718	62,879,249
1995/96	44,759,994	13,913,927	5,798,972	64,472,893
1994/95	38,290,463	13,031,417	6,191,986	57,513,866
1993/94	39,727,969	13,652,395	5,791,765	59,172,130
1992/93	42,454,364	15,207,533	5,702,825	63,364,723
1991/92	43,182,343	15,468,302	5,800,613	64,451,258
1990/91	39,981,495	14,321,730	5,370,649	59,673,873

*Source: Field Services Division*

In recent years, the collection of attendance data has been improved through better collection and reporting systems, and by the examination of computer-generated reports that indicate which newly reported data deviates from previously determined norms.

The degree of detail for which visitor attendance data is available has increased over the eleven-year period. This past information is available as follows:

- Starting 2001/02 – unit attendance by month
- Starting 1996/97 – unit attendance by quarter
- Starting 1993/94 – district attendance by quarter
- Prior to 1993/94 – system totals by quarter

At the present time, visitor attendance data is collected only for those units that are operated by the State Park System. Often, no visitor counts are made at remote and little-used units within the System.

Section 4 - Revenue: Fees, Concessions, Miscellaneous

These figures are taken from the year-end totals provided by the Department to the State Controller, data which then appears in the "Actual" column of each annual *Governor's Budget*. Accounting Services also has figures for these categories, but they are slightly higher because they include income reported after the close of the fiscal year.

Fiscal Year	Fees (\$000)	Concessions (\$000)	Miscellaneous (\$000)	Totals (\$000)
2000/01	44,568	13,082	10,573	68,223
1999/00	55,238	13,983	8,321	77,632
1998/99	53,579	12,734	6,596	72,909
1997/98	47,848	11,713	5,840	65,401
1996/97	54,108	10,167	5,754	70,029
1995/96	51,466	9,355	5,385	66,206
1994/95	46,451	7,896	4,204	58,549
1993/94	47,992	7,828	3,113	58,833
1992/93	50,040	8,079	3,937	62,076
1991/92	50,869	7,643	3,739	64,251
1990/91	46,981	11,137	7,075	65,189

*Source: Budget Section*

Each figure above combines revenue from the State Parks and Recreation Fund (SPRF) and the Off-Highway Vehicle Trust Fund. The specific CalStars components of this table's three revenue categories are described in detail as the definition of "revenue" found in Chapter 4 of this report.

The greatly reduced fee income in 2000/01 was likely the result of the substantial reduction in fees which was phased in during the 2000/01 fiscal year.

In years when revenues from fees are low, additional funding for operations often comes in the form of various "transfers and adjustments", a category which is not included in this table.

## Section 5 - Operating Costs and Staff Levels

These figures for the operating costs and staff levels in districts and units which constitute “the field” are taken from the annual editions of the *Governor’s Budget*. The budget data uses the “Actual” figures for each year. The staff figures are for “Authorized” rather than the “Filled” positions. The authorized figures provide a more stable data set.

Fiscal Year	Base Budget (dollars)	Permanent Staff (positions)	Temporary (annual equivalent positions)
2000/01	137,650,917	1,740.1	818.2
1999/00	113,303,164	1,636.2	805.0
1998/99	114,397,451	1,645.1	812.3
1997/98	112,633,396	1,633.2	817.0
1996/97	111,657,733	1,617.5	816.9
1995/96	111,373,527	1,609.5	833.9
1994/95	111,546,017	1,609.5	833.9
1993/94	N/A	1,604.7	834.2
1992/93	N/A	1,584.2	833.9
1991/92	N/A	1,693.3	871.6
1990/91	N/A	1,673.5	856.4

*Source: Budget Section*

Temporary positions include permanent intermittent, seasonal and retired annuitant positions.

For 1994/95 and the more recent fiscal years, the three data categories are available on the “field” or district level. In some cases, these district figures are disaggregated into sectors or smaller unit groupings used for payroll purposes. For earlier years, some or all of the data is available only at the systemwide level of aggregation, with the field and headquarters figures combined.

The sharp budget increase in the base budget and in permanent positions for the 2000/01 fiscal year was due to a number of causes. The largest cause was the funding of extra staff and operating funds to accommodate a surge of public use that was experienced as the result of the substantial fee reduction that was phased in during the 2001/02 fiscal year. In addition, there was extra money provided in the budget for deferred maintenance and for training.

This page intentionally left blank.

## APPENDIX B

### PUBLIC USE FACILITY SURVEY

As indicated in Section 2 of Appendix A, above, existing departmental information sources were unable to provide current data for the three most basic categories of public use facilities which were reported in earlier annual statistical reports. These basic categories were then called “camp”, “picnic”, and “trails”.

To obtain the information needed for the present statistical report, the Planning Division made an exhaustive unit-by-unit survey in the spring of 2003 to get exact figures for the following types of visitor facilities:

- Overnight use facilities – individual (or “family”) and group campsites, as well as a variety of specific types of shelters, structures and commercial lodging accommodations
- Picnic facilities – individual (or “family”) and group
- Trails – mileage of paths and unimproved roadways available to users other than those using off-highway vehicles

A survey form was completed by appropriate field staff for every classified unit and major unclassified property, following the instruction that the information provided would reflect the situation as it was on June 30, 2002, the end of the 2001/02 fiscal year. An example of this form appears below.

As shown on the survey form, this instrument broke these three broad categories down into twenty-one subcategories, each of which was carefully defined so as to be mutually exclusive of the others. The instrument also sought information on the “visitor capacity” of each subcategory of overnight use and day use facility. This figure reflects the number of people (or in one case, boats) who could occupy the facilities at one time, a factor that is sometimes termed a facility’s “instantaneous capacity.” The foldout sheet, below, indicates the totals for each category and grouping of categories.

As indicated in the definition of public use facilities in Chapter 4, above, nineteen of the twenty-one subcategories were combined into the six categories of public use facilities reported in the present document. Because they were by their nature open-ended and poorly defined, and thus not subject to being precisely counted, the two subcategories of overflow camping were not used in the report.

This survey did not seek information on trails used by off-road vehicles because many of these facilities are not well defined and in some cases are indistinguishable from the “volunteer trails” from cross-country riding. The “Trails” data in previous statistical reports had contained trails used by off-road vehicles.

This page intentionally left blank.

## PARK UNIT FACILITY SURVEY

### Unit or property:

Please complete this survey for the unit or property indicated above and return it to the State Park System Planning Section, attn. Bruce Kennedy, by **Friday, January 24, 2003**. This information is critical for the creation of a new DPR Statistical Report, the first one we have had for a dozen years. Where there are no facilities in a given category, please indicate that by a zero rather than leaving the box empty. Thanks.

Your figures need to be current as of June 30, 2002

79

### I. Overnight Use Facilities

<u>Description of Facility</u>		<u># Sites</u>	<u>Total Visitor Capacity</u>
<b>A. Family Camping Facilities</b>			
<b>1</b>	<b>Primitive/undeveloped</b> * up to 8 people and two vehicles; tent space, stove, table and nearby piped water, chemical or vault toilet		
<b>2</b>	<b>Developed</b> * up to 8 people and two vehicles; tent space, stove, table and nearby piped water, and restroom with flush toilets and hot water; maybe showers and laundry sinks		
<b>3</b>	<b>RV Hookup</b> * up to 8 people and two vehicles; paved spur for RV, stove, table and restroom with flush toilets and hot water; each site with electricity and water; sewer connection on site or in unit		

<b>4</b>	<b>Environmental/Trail Campsite</b> * designated primitive site with tent space, table, fire ring or stove, pit toilet in relatively undisturbed setting		
<b>5</b>	<b>Hike-in or Bike Campsite</b> * designated area with tent space, table, fire ring or stove, with water and toilet facilities nearby		
<b>6</b>	<b>Floating Campsite</b> * tent space, table, stove and sanitary facilities located on a floating platform, accessible only by private boat		
<b>7</b>	<b>Dock Berths or Off-shore Mooring Buoys</b> * number of boats that can be accommodated; the vessels can be self-contained or the overnight usage may be on a site on the shore		

## B. Group Camping Areas

<b>8</b>	<b>Tent or RV use - primitive or developed</b> * an area with appropriate space for many tents or RVs, providing tables, stoves or fire rings, access to water and sanitary facilities; often used by reservation only		
<b>9</b>	<b>Horse Camps - primitive or developed</b> * a group area reserved only or mainly for the use of horse groups, providing facilities needed for the management of the horses; often used by reservation only		

## C. Overflow Camping Areas

<b>10</b>	<b>Enroute/Wayside Camping</b> * overnight self-contained RV occupancy of day use or other paved areas, limited and specified sites, single-night only; day use tables and sanitation facilities available		
-----------	---	--	--



11	<b>Open, Casual Areas</b> * unmarked portions of fields, dirt or gravel areas where tents and RVs may be used without time limit; support facilities may be limited		
----	--	--	--

**D. Overnight (non-camping) Facilities - Structures**

12	<b>Tent Cabin/Shelter</b> * semi-permanent tent on raised wood platform or three-sided shelter with roof, supporting table, cooking and sanitary facilities		
13	<b>Rustic Cabin</b> * enclosed building with appropriate facilities, some of which (e.g. sanitary facilities) may be located outside of the building		
14	<b>Yurt</b> * shelter with appropriate facilities, some of which (e.g. sanitary facilities) may be located out-of-doors		
15	<b>Bark Houses</b> * Native American-type shelter with appropriate facilities, some of which (e.g. sanitary facilities) may be located out-of-doors		
16	<b>Modern Lodge/Motel/Detached Cabins</b> * With rooms, usually for two occupants, with heating, electricity, running hot and cold water, sanitation facilities		

**II. Picnic Facilities**

17	<b>Family Picnic Sites</b> * an small area with a table, stove or fire ring, with nearby parking, water and sanitary facilities (sometimes used by groups but intended for individual families or fewer)		
----	---	--	--

18	<b>Group Picnic Areas</b> * a larger area with a number of tables, stoves or fire rings, with nearby parking, water and sanitary facilities, often arranged to accommodate group use; often used by reservation only		
----	---	--	--

### III. Trails (on SPS Lands Only)

Note: consider only trails for three user types - foot, horse and bicycle, and not motorized vehicles. Note the distinction between trails that are pathways only and those which are unimproved roads and firebreaks. The two right-hand columns are for number of trails and their total mileage to one decimal place (e.g. 17.1 miles)

19	<b>Maximum-use Trails</b> * pathways/trails intended for use by all three user types, foot, horse and bicycle		
20	<b>Limited-use Trails</b> * pathways/trails where only one or two uses are permitted, with the others prohibited		
21	<b>Roadways and Firebreaks</b> * unimproved (dirt, gravel) roads and firebreaks which are designated or used as trails by any or all of the three user types		

If you have any notes or commentary which will clarify the answers you provided, please write them in below. For any comment, cite the category of facility (which number, 1 through 21) you are referring to.

# STATE PARK SYSTEM: 2001-2002 FACILITY SURVEY SUMMARY

## I. Overnight Use Facilities

### A. Individual/Family Camp Sites

		2001-02 Survey Responses	
		Number of Sites	Visitor Capacity: # of people
1	<b>Primitive/undeveloped:</b> accommodates up to 8 people and two vehicles with a tent space, stove, table and nearby piped water and a chemical or vault toilet	3,662	29,308
2	<b>Developed:</b> accommodates up to 8 people and two vehicles with a tent space, stove, table, nearby piped water and a restroom with flush toilets and hot water; may include showers and laundry sinks	8,350	66,294
3	<b>RV Hookup:</b> accommodates up to 8 people and two vehicles with a paved spur for RV, stove, table and restroom with flush toilets and hot water; each site with electricity and water; sewer connection on site or in unit	1,101	8,199
4	<b>Environmental/Trail Campsite:</b> designated primitive site with a tent space, table, fire ring or stove and a pit toilet in a relatively undisturbed setting	526	3,231
5	<b>Hike-in or Bike Campsite:</b> designated area with a tent space, table, fire ring or stove, with water and toilet facilities nearby	239	1,834
6	<b>Floating Campsite:</b> tent space, table, stove and toilet facilities located on a floating platform, accessible only by boat	10	150
7	<b>Dock Berths or Off-shore Mooring Buoys:</b> number of boats that can be accommodated; the vessels can be self-contained or the overnight usage may be on a site on-shore	1,254	4,480
		<b>15,142</b>	<b>113,496</b>

### B. Group Camp Sites

		2001-02 Survey Responses	
		Number of Sites	Visitor Capacity: # of people
8	<b>Tent or RV use - primitive or developed:</b> an area with space for many tents or RVs, providing tables, stoves or fire rings, access to water and toilet facilities; often used by reservation only	155	8,330
9	<b>Horse Camps - primitive or developed:</b> a group area reserved only or mainly for the use of horse groups, providing facilities needed for managing the horses; often used by reservation only	72	1,406
		<b>227</b>	<b>9,736</b>

### C. Overflow Camping Areas

		2001-02 Survey Responses	
		Number of Sites	Visitor Capacity: # of people
10	<b>Enroute/Wayside Camping:</b> overnight, self-contained RV occupancy of day-use or other paved areas, limited and specified sites, single-night only; day-use tables and sanitation facilities available	467	4,226
11	<b>Open, Casual Areas:</b> unmarked portions of open fields, dirt or gravel areas where tents and RVs may be used sometimes; support facilities may be limited	40,807	326,461
		<b>41,274</b>	<b>330,687</b>

### D. Overnight (non-camping) Facilities - Structures

		2001-02 Survey Responses	
		Number of Sites	Visitor Capacity: # of people
12	<b>Tent Cabins/Shelters:</b> semi-permanent tent on raised wood platform or three-sided shelter with roof, with a supporting table, cooking and restroom facilities	58	376
13	<b>Rustic Cabins:</b> enclosed building with appropriate facilities, some of which (restrooms) may be located outside of the building	107	503
14	<b>Yurts:</b> shelter with appropriate facilities, some of which (restrooms) may be located outside the structure	0	0
15	<b>Bark Houses:</b> Native American-type shelter with appropriate facilities, some of which (restrooms) may be located outside the structure	6	45
16	<b>Modern Lodge/Motel/Detached Cabins:</b> with rooms, usually for two occupants, with heating, electricity, hot and cold running water and restrooms; may be operated by concessionaires	419	1,607
		<b>590</b>	<b>2,531</b>

## II. Picnic Facilities

		2001-02 Survey Responses	
		Number of Sites	Visitor Capacity: # of people
17	<b>Family Picnic Sites:</b> a small area with a table, stove or fire rings, with nearby parking, water and restrooms (sometimes used by groups but intended for individuals or families)	7,227	58,713
18	<b>Group Picnic Sites:</b> a large area with a number of tables, stoves or fire rings, with nearby parking, water and restroom facilities, often arranged for group use and often used by reservation only	209	15,779
		<b>7,436</b>	<b>74,492</b>

## III. Non-Motorized Trails (on DPR lands only)

		2001-02 Survey Responses	
		Number of Trails	Total Miles of Trail
19	<b>Maximum-use Trails:</b> pathways/trails for all three non-motorized user types: foot, horse and bicycle	320	731.7
20	<b>Limited-use Trails:</b> pathways/trails where only one or two user types are allowed and the other(s) prohibited	1,034	1,453.0
21	<b>Roadways and Firebreaks:</b> unimproved (dirt, gravel) roads and firebreaks which are designated as trails or used as trails by any or all of the three user types	566	1,549.4
		<b>1,920</b>	<b>3,734.0</b>

This page intentionally left blank.

## APPENDIX C

### INTERNAL UNITS, MINOR SYSTEM PROPERTIES

#### 1. Internal Units

As indicated in Chapter 2, during the 2001/02 fiscal year, the State Park System consists of 250 classified units and 16 major unclassified properties, for a total of 266 units and properties. Not included in these figures are three kinds of classified units, Cultural Preserves, Natural Preserves and State Wildernesses. These units, informally termed “internal units”, are portions of or lands internal to one of the System’s basic 250 classified units. The purpose of creating such units is to provide a higher level of protection to the resources than would be required by the classification of the “parent unit”, the unit in which it is located.

Internal classified units are not listed in the table in Chapter 3, above. They appear in List 3 of each annual edition of the Department’s *Planning Milestones* publication.

There were 79 internal units in the State Park System on July 1, 2001. Since internal units are operated as an integral part of the parent unit in which they are located, there is little data available which applies to internal units alone, other than for their classification date, county of location and acreage. There is no information available for internal units in other data categories such as public use facilities, visitor attendance, operating costs, staffing, and the like. Any information of this type which is relevant to an internal unit would be included as part of that type of information which is relevant to the parent unit as a whole.

Table C-1, following, provides the available data for internal units.

#### 2. Minor System Properties

In addition to the State Park System’s 266 classified units and major unclassified properties, there is a handful of minor, usually very small properties, for which the System is responsible. Not being part of the standard System, they are not listed in the table in Chapter 3, above. They are usually managed by the office of the System district in which they are located.

Table C-2, below, provides the basic information on these properties.

This page intentionally left blank.

Table C-1

## State Park System - Internal Units

July 1, 2001

SUBUNIT	UNIT NUMBER	PARENT UNIT	DATE CLASSIFIED	COUNTY	ACRES
Ah-Ha-Kwe-Ah-Mac/ Stonewall Mine CP	909	Cuyamaca Rancho SP	Mar 1983	SD	430.00
Anderson Island NP	397	Folsom Lake SRA	Sep 1974	ED,PLA,SAC	10.00
Anderson Marsh NP	926	Anderson Marsh SHP	Jun 1985	LAK	540.00
Antone Meadows NP	365	Burton Creek SP	Jul 1978	PLA	160.00
Anza-Borrego Desert SW	624	Anza-Borrego Desert SP	Mar 1981	IMP,RIV,SD	297,400.00
Arena Rock Marine NP	930	Manchester SP	Jul 1987	MEN	500.00
Barrel Springs CP	913	Ocotillo Wells SVRA	Mar 1983	IMP,SD	1.00
Big Lagoon Forest, East NP	914	Harry A. Merlo SRA	Jun 1983	HUM	80.00
Big Lagoon Forest, South NP	916	Harry A. Merlo SRA	Jun 1983	HUM	62.00
Big Lagoon Forest, West NP	915	Harry A. Merlo SRA	Jun 1983	HUM	51.00
Boney Mountain SW	910	Point Mugu SP	Oct 1981	VEN	6,190.00
Brush Creek/Lagoon Lake Wetlands and Coastal Dunes NP	947	Manchester SP	Dec 1992	MEN	650.00
Bull Creek SW	957	Humboldt Redwoods SP	Nov 2001	HUM	10,450.00
Burton Creek NP	364	Burton Creek SP	Jul 1978	PLA	170.00
Calaveras South Grove NP	305	Calaveras Big Trees SP	Nov 1984	CAL,TUO	1,260.00
Carl "A" Anderson Redwoods NP	956	Humboldt Redwoods SP	Nov 2001	HUM	3,520.00
Carmel River Lagoon and Wetland NP	927	Carmel River SB	Nov 1985	MON	53.00
Civilian Conservation Corps CP	938	Mount Diablo SP	Nov 1989	CC	640.00
Cuish-Cuish (East Mesa) CP	911	Cuyamaca Rancho SP	Mar 1983	SD	530.00
Cuyamaca Meadow NP	943	Cuyamaca Rancho SP	Nov 1990	SD	950.00
Cuyamaca Mountain SW	906	Cuyamaca Rancho SP	Apr 1982	SD	13,210.00

SUBUNIT	UNIT NUMBER	PARENT UNIT	DATE CLASSIFIED	COUNTY	ACRES
Doane Valley NP	675	Palomar Mountain SP	Oct 1974	SD	450.00
Edwin L. Z'berg NP	342	Sugar Pine Point SP	Feb 1977	ED	160.00
Ellen Browning Scripps NP	633	Torrey Pines SR	Feb 1970	SD	72.00
Freeman Canyon CP	920	Hungry Valley SVRA	Aug 1983	LA,VEN	200.00
Gorman CP	919	Hungry Valley SVRA	Aug 1983	LA,VEN	160.00
Hagen Canyon NP	583	Red Rock Canyon SP	Jul 1974	KER	1,145.00
Henry W. Coe SW	925	Henry W. Coe SP	May 1985	SCL,STA	20,200.00
Heron Rookery NP	471	Morrow Bay SP	Apr 1975	SLO	6.00
Hidden Divide NP	960	Mount San Jacinto SP	Oct. 2002	RIV	255.00
Hungry Valley Oak Woodland NP	917	Hungry Valley SVRA	Aug 1983	LA,VEN	60.00
Inglenook Fen-Ten Mile Dunes NP	949	MacKerricher SP	Jun 1995	MEN	1,285.00
Kaslow NP	903	Malibu Creek SP	Oct 1981	LA	1,920.00
Kechaye CP	904	Millerton Lake SRA	Jun 1981	FRE,MAD	200.00
Kumeyaay Soapstone CP	912	Cuyamaca Rancho SP	Mar 1983	SD	136.00
La Jolla Valley NP	571	Point Mugu SP	May 1972	VEN	600.00
Lake Davis Wetlands and Coastal Dunes NP	948	Manchester SP	Dec 1992	MEN	435.00
Least Tern NP	515	Huntington SB	Jul 1975	ORA	5.00
Liberty Canyon NP	902	Malibu Creek SP	Oct 1981	LA	810.00
Los Penasquitos Marsh NP	640	Torrey Pines SR	Feb 1970	SD	218.00
Marina Dunes NP	932	Marina SB	Aug 1987	MON	111.00
Mitchell Caverns NP	631	Providence Mountains SRA	Sep 1963	SBD	628.00
Monarch Butterfly NP	924	Natural Bridges SB	May 1984	SCR	16.00
Moore Creek Wetland NP	937	Natural Bridges SB	Oct 1988	SCR	14.00
Mormon Island Wetlands NP	946	Folsom Lake SRA	Jun 1992	ED,PLA,SAC	110.00
Morro Dunes NP	936	Montana de Oro SP	Jun 1988	SLO	900.00
Morro Estuary NP	445	Morro Bay SP	Jun 1988	SLO	420.00



<b>SUBUNIT</b>	<b>UNIT NUMBER</b>	<b>PARENT UNIT</b>	<b>DATE CLASSIFIED</b>	<b>COUNTY</b>	<b>ACRES</b>
Morro Rock NP	445	Morro Bay SP	Sep 1969	SLO	45.00
Mount San Jacinto SW	619	Mount San Jacinto SP	Jan 1974	RIV	12,465.00
Murrelet SW	954	Prairie Creek Redwoods SP	Nov 1999	DN,HUM	6,600.00
Nicholas Flat NP	951	Leo Carrillo SP	Oct 1996	LA,VEN	600.00
Ohlone Coastal CP	929	Carmel River SB	Jun 1987	MON	25.00
Pa-nu CP	942	San Simeon SP	Oct 1990	SLO	13.70
Pajaro River Mouth NP	934	Zmudowski SB	Aug 1987	MON	73.00
Pescadero Marsh NP	283	Pescadero SB	Nov 1974	SM	235.00
Pilcha (West Mesa) CP	910	Cuyamaca Rancho SP	May 1983	SD	1,400.00
Pismo Dunes NP	459	Pismo SB	Jul 1974	SLO	400.00
Point Dume NP	945	Point Dune SB	Mar 1992	LA	34.00
Red Cliffs NP	585	Red Rock Canyon SP	Jul 1974	KER	365.00
Redwood Heritage SW	955	Jedediah Smith Redwoods SP	Nov 1999	DN	5,500.00
Salinas River Dunes NP	931	Salinas River SB	Aug 1987	MON	105.00
Salinas River Mouth NP	933	Salinas River SB	Aug 1987	MON	72.00
San Lorenzo Headwaters NP	953	Castle Rock SP	Mar 2000	SCL,SCR,SM	365.00
San Mateo Creek Wetlands NP	922	San Onofre SB	Apr 1984	SD	37.00
San Simeon NP	941	San Simeon SP	Oct 1990	SLO	365.00
Santa Clara Estuary NP	568	McGrath SB	Jul 1979	VEN	160.00
Santa Rosa Creek NP	940	San Simeon SP	Oct 1990	SLO	40.00
Santa Rosa Mountains SW	627	Anza-Borrego Desert SP	Feb 1974	IMP,RIV,SD	87,000.00
Silver Strand NP	921	Silver Strand SB	Nov 1983	SD	26.00
Southampton Bay Wetland NP	944	Benicia SRA	Jun 1991	SOL	210.00
Sunset Wetlands NP	939	Sunset SB	May 1990	SCR	40.00
Tataviam CP	918	Hungry Valley SVRA	Aug 1983	LA,VEN	450.00
Theodore J. Hoover NP	905	Big Basin Redwoods SP	Jan 1982	SCR,SM	23.00
Tijuana Estuary NP	928	Border Field SP	Jan 1987	SD	327.00

<b>SUBUNIT</b>	<b>UNIT NUMBER</b>	<b>PARENT UNIT</b>	<b>DATE CLASSIFIED</b>	<b>COUNTY</b>	<b>ACRES</b>
Trestles Wetlands NP	953	San Onofre SB	Apr 1984	SD	82.00
Udell Gorge NP	907	Malibu Creek SP	Jun 1982	LA	287.00
Van Damme Pygmy Forest NP	950	Van Damme SP	Jun 1995	MEN	200.00
Water Canyon NP	952	Chino Hills SP	Feb 1999	ORA,RIV,SBD	1,425.00
West Waddell Creek SW	908	Big Basin Redwoods SP	Nov 1982	SCR,SM	5,810.00
Wilder Beach NP	466	Wilder Ranch SP	May 1980	SCR	67.00
Wilder Dairy CP	464	Wilder Ranch SP	May 1980	SCR	20.00
Woodson Bridge NP	122	Woodson Bridge SRA	Sep 1974	TEH	260.00

Table C-2

**Minor System Properties**

Property Name	Unit Number	County	Acres Owned
Alamitos SB	565	Orange County	.90
Big Rock Beach	510	Los Angeles County	.43
Drum Barracks	576	Los Angeles County	.43
Manhattan SB	546	Los Angeles County	5.37
Monterey District HQ	200	Monterey County	5.81
Pan Pacific Park	501	Los Angeles County	28.26
San Diego Coast Office Building, Carlsbad (*)	---	San Diego County	.31
San Mateo County Trails Project	478	San Mateo County (leased – in addition))	2.26 (.05)
Seccombe Lake SURA	598	San Bernardino County	.57
Stillwater Cove	210	Sonoma County	36.27

These properties appear in Lists 5 and 6 of the July 1, 2001 edition of the publication *Planning Milestones for the Park Units and Major Properties Associated with the California State Park System*. Additional information on the nature and status of these properties may be found in this publication.

(\*) Office of former La Costa District, 2860 Carlsbad Boulevard, Carlsbad: granted by the Division of Forestry, recorded 2/15/73, gift value of \$250.

This page intentionally left blank.

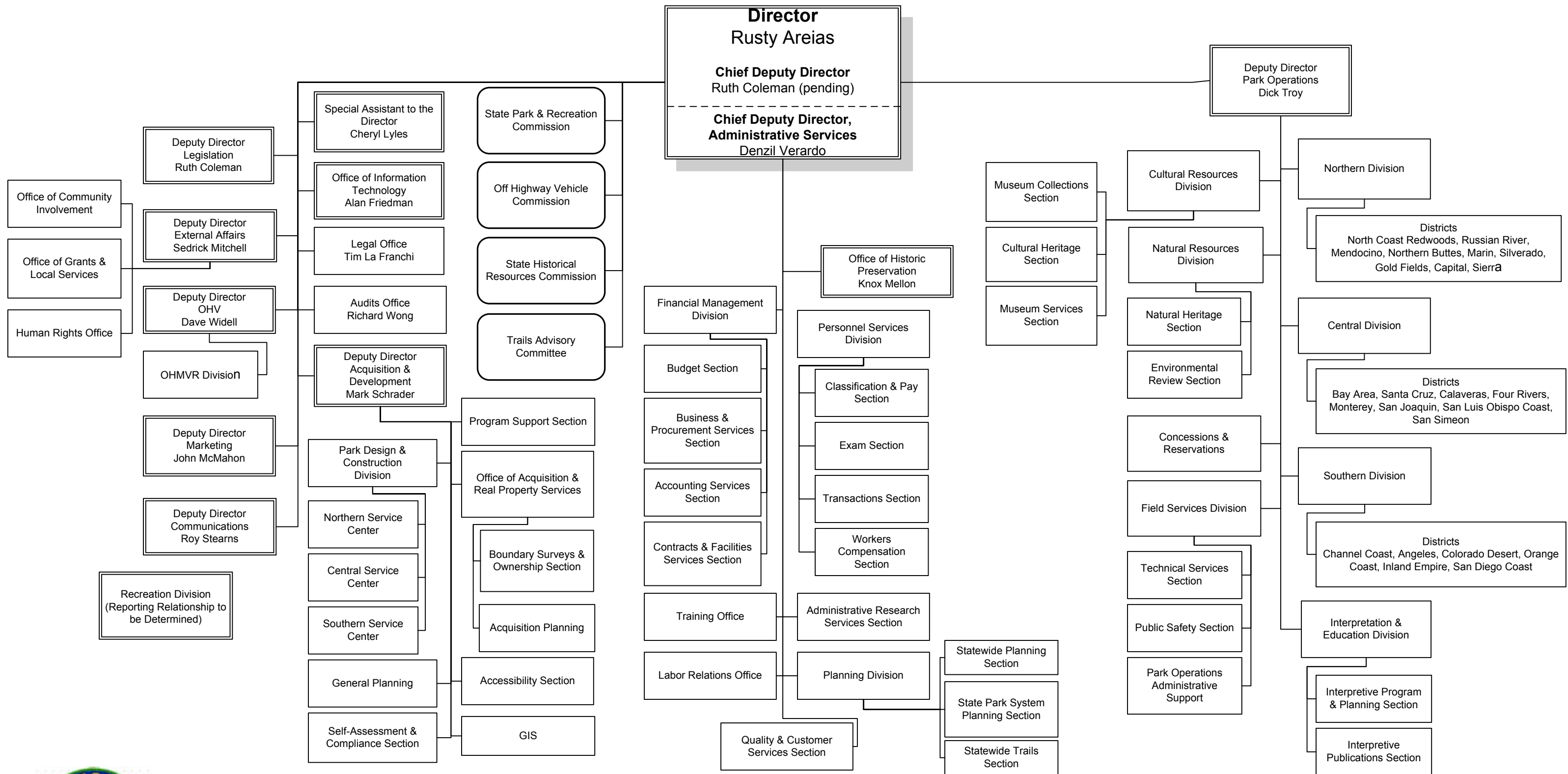
## **APPENDIX D**

### **DEPARTMENT ORGANIZATION CHART**

The following foldout page shows an organization chart for the Department of Parks and Recreation that was current as of September 1, 2001. This is the only available chart that is official (signed by the Director) and that is specific to any date during the 2001/02 fiscal year. The organization reflected here was the same nine months later, at the end of the fiscal year, June 30, 2002.

This page intentionally left blank.

# California Department of Parks and Recreation Organizational Structure



Original Signed by

*September 1, 2001*

Rusty Areias, Director

Date

This page intentionally left blank.



## APPENDIX E

### OTHER SOURCES OF PARK SYSTEM DATA

Chapter 5 identified departmental sources that continually generate data and information about many of the field activities and operations that take place in the State Park System. In addition, there exist other sources – libraries, depositories and archives – which house collections of published materials which may contain relevant information. These sources emphasize past, historic data. The most important ones are listed below.

#### A. California Department of Parks and Recreation

Archives - The Department's Archives collects, organizes, preserves, and makes accessible documents with long-term or permanent value. A variety of Department's statistical reports, resource surveys, planning studies, interpretive reports, acquisition files, leases and deeds are located in the Archives, which also houses the Department's Cultural Heritage Library. This library contains a wide variety of books and other publications, of both a scholarly and general nature, published by sources outside of the Department.

- Contact: Victoria Yturalde, Archivist II, Cultural Resources Division, (916) 651-6959; vytur@parks.ca.gov.

Central Records Office - This office is responsible for the systematic control of the creation, maintenance, use, and disposition of all departmental records relevant to the Department's decision-making and activities. Records include documentary materials, books, electronic data, maps, moving images, papers, photographs, sound recordings, made or received by the Department in the transaction of public business. This activity is in response to the State Records Management Act.

- Diane Voll, Associate Government Program Analyst, Central Records Office, Administrative Services Division, (916) 324-9852; dvoll@parks.ca.gov

Internal Departmental "Libraries" - Certain of the Department's organizational components house reference libraries and collections containing materials of value to the performance of their function. Information on various aspects of the State Park System may be sought from these sources, which are located as follows:

- Cultural Resources Division
- Interpretation and Education Division
- Natural Resources Division
- Northern Service Center
- Planning Division

## **B. Other Sources**

California State Library (Sacramento) - This library's Government Publications Section contains a vast collection of reports, surveys, special studies and yearbooks containing information on the full range of California's agencies, departments, bureaus and boards.

- Contact: Reference Desk, Government Publications Section, California State Library, 914 Capitol Mall, MS E-29, P.O. Box 942837, Sacramento, CA 94237-0001; 916-654-0069; 916-653-6114 (fax); e-mail: [cslgps@library.ca.gov](mailto:cslgps@library.ca.gov). Hours of operation: 9:30 AM-4 PM, Monday-Friday.

National Association of State Park Directors – Annual Information Exchange series. - Starting with fiscal year 1979, this organization has produced an annual statistical report which encompasses all of the nation's state park systems. Each lengthy report contains many data series, including acreage, facilities, attendance, and information on each system's fiscal and personnel matters. In some categories, this Department's definitions (and thus its data) must be altered to fit the needs of the NASPD publication.

- Contact: NASPD, 9894 East Holden Place, Tucson, AZ 85748; (520) 298-4924; <http://www.naspd.org>

## **PUBLICATION CREDITS**

The following staff members contributed to the development and publication of the *California State Park System Statistical Report: 2001/02 Fiscal Year*.

### Creation of the Basic Document and Map

- Bruce Kennedy, Supervisor, State Park System Planning Section, Planning Division
- Philomene Smith, Associate Park and Recreation Specialist, Planning Division
- Philip Carey, Exhibit Designer/Coordinator, Capital District
- Krysten Laine, GIS Analyst, Northern Service Center

### Providers of Data, Information and Other Valuable Assistance

- Val Bradshaw, Maintenance Chief III, Technical Services Section, Field Services Division
- Rebecca Brown, Budget Officer, Budget Section, Administrative Services Division
- Linda Canar, Program Manager, Accessibility Section, Acquisition and Development Division
- John Foster, Senior State Archaeologist, Cultural Resources Division
- Wendy Franklin, Museum Curator, Cultural Resources Division
- Jim Luscutoff, Reservations Manager, Field Services Division
- Victor Maris, Manager of Visitor Services, Field Services Division
- Donna Pozzi, Chief, Interpretation and Education Division
- Dave Schaub, Supervisor, Natural Heritage Section
- Randy Sederquist, State Park Superintendent II, Field Services Division
- Kim Snyder, Real Property Manager, Office of Acquisition and Real Property Services
- Diane Voll, Associate Governmental Program Analyst, Central Records Office

### Contributions From Individuals Outside of the Department:

- Janet Coles – California State Library
- Jim Maddox – retired from Department - back cover drawing
- Dale Wilson – retired from Department - historic postmarks

This page intentionally left blank.

(The printed version of this report held a 20" x 24" California State Parks Map in a map pocket on the inside back cover. Although an electronic version of the map is not available, limited quantities of extra maps are available by request through the California State Parks Planning Division at (916) 653-9901.)

