

Memorandum

Date : March 2009

To : Document Recipient

From : **Department of Parks and Recreation**
Planning Division

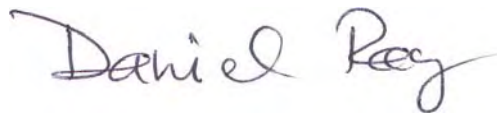
Subject : *The California State Park System Statistical Report: 2007/08 Fiscal Year*

Attached you will find a copy of the 2007/08 fiscal year edition of the *California State Park System Statistical Report*, with revisions and new materials, that succeeds the 2006/07 fiscal year edition.

This publication provides a comprehensive collection of statistical information designed to provide tools to analyze various aspects of the California State Park System. This edition represents a snapshot of the System on June 30, 2008. As of this 'snapshot' date, the State Park System had 259 classified units and 19 major unclassified properties, for a total of 278 areas. The *Statistical Report* is a historical publication that represents California State Park System data relating to the 2007/08 fiscal year.

The *Statistical Report* provides information relating to acreage, public use facilities, visitor attendance and revenue at the unit, sector, district and statewide levels. Information such as unit number, staffing levels and unit acreage per county is also provided to assist the State Park System researcher.

The staff of the Planning Division has made every effort to ensure the accuracy of the *Statistical Report*. This publication is a collaborative effort consolidating data from multiple State Park divisions. Even with our exhaustive efforts, it is possible that errors can occur. If you have any questions or suggestions concerning this edition of the *Statistical Report*, please contact the Planning Division at (916)653-9901 or email planning@parks.ca.gov. We hope that you will find the *Statistical Report* an indispensable aide for State Park System information.



Daniel Ray
Chief, Planning Division, California State Parks

This page intentionally left blank.

California State Park System

*Statistical
Report*

2007/08 Fiscal Year

**Statewide Planning Unit
Planning Division
California State Parks
P.O. Box 942896
Sacramento, California 94296-0001**



This page intentionally left blank.

Errata

*California State Park System Statistical Report:
2007/08 Fiscal Year*

Corrections have been made to the online version of the original report. These corrections are only to visitor attendance data in Chapter 3 – Basic Park System Statistics and subsequently to the analysis of visitor attendance in Chapter 1 – Summary and Analysis.

These corrections can be found **highlighted** and are due to a reporting error to the attendance totals for 2007/08 fiscal year.

This page intentionally left blank.

TABLE OF CONTENTS

INTRODUCTION.....	1
CHAPTER 1 - SUMMARY AND ANALYSIS.....	5
Number of Units and Properties	5
Acreage, California State Parks Owned	5
Acreage, Other	5
Total Acreage	6
Waterfront Feet.....	6
Individual Camp Sites.....	6
Group Camp Sites	6
Non-Camping Overnight Facilities	6
Individual Picnic Sites.....	6
Group Picnic Sites	7
Non-Motorized Trail Miles.....	7
Visitor Attendance – Day Use.....	7
Visitor Attendance – Camping	7
Visitor Attendance – Total.....	7
Revenue - User Fees	7
Revenue – Concessions.....	7
Revenue – Miscellaneous.....	7
Total Revenue	7
Operating Costs.....	8
Revenue as a % of Operating Costs	8
Authorized Permanent Full-Time Positions.....	8
Authorized Temporary Positions.....	8
CHAPTER 2 - PARK SYSTEM SIZE AND SCOPE.....	9
CHAPTER 3 - BASIC PARK SYSTEM STATISTICS	13
CHAPTER 4 - BASIC STATISTICS – DEFINITION OF TERMS.....	41
Park Name.....	41
Park Classification	41
Unit Number	41
County	41
Acreage	41
Waterfront Feet.....	42
Public Use Facilities	42
Visitor Attendance	44
Revenue	45
Operating Costs.....	46
Staffing	47

CHAPTER 5 - OTHER AVAILABLE STATISTICS.....	49
A. Internet/Intranet.....	49
B. Direct Sources.....	49
Accidents.....	50
Aerial Photo Files.....	50
Archaeological Collections.....	50
Condition Assessment Database.....	50
Cooperating Associations.....	50
Crimes.....	51
Cultural Resources: Sites, Structures, Registrations.....	51
Facilities – Accessibility.....	51
Facilities – Data for Maintenance Purposes.....	51
Facilities – Museum Collections.....	52
Facilities – Three Visitor Facility Types in Detail.....	52
Flora and Fauna Databases.....	52
Incidents.....	52
Interpretive programs.....	52
Legislative Districts.....	53
The Museum System (TMS) database.....	53
Park Features, Attractions and Associations.....	53
Photographic Archives -.....	53
Reservations for Campsites, Hearst Castle ®.....	53
CHAPTER 6 - HISTORY OF THIS REPORT.....	55
A. Division of Beaches and Parks.....	57
B. Department of Parks and Recreation.....	57
APPENDIX A - SELECTED DATA – 1990/91 TO 2000/01.....	59
APPENDIX B - PUBLIC USE FACILITY SURVEY – FY 2007/08.....	61
APPENDIX C - INTERNAL UNITS, MINOR SYSTEM PROPERTIES.....	65
Table C-1.....	67
Table C-2.....	71
APPENDIX D - CALIFORNIA STATE PARKS ORGANIZATION CHART.....	73
APPENDIX E - OTHER SOURCES OF PARK SYSTEM DATA.....	77
A. California State Parks.....	77
Archives.....	77
Central Records Office.....	77
Internal Departmental “Libraries”.....	77

B. Other Sources	78
California State Library (Sacramento)	78
National Association of State Park Directors	78
PUBLICATION CREDITS.....	79
NOTES.....	80

INTRODUCTION

The central purpose of this edition of the annual statistical report is to provide information on the basic parameters of the California State Park System (State Park System) for a specific period of time, the 2007/08 fiscal year. This year spanned the period of July 1, 2007 through June 30, 2008. As indicated in Chapter 3, some of the data used to portray the State Park System for this fiscal year are current as of the beginning of the fiscal year, July 1. Some are current as of the last day of the fiscal year, June 30. Most of the State Park System data reflects the measurement of activity that took place between these two points in time, during the course of the entire fiscal year.

Like any responsible organization, the State Park System needs to clearly know the scope, scale and dimensions of its activities and operations. To have this knowledge, the State Park System needs information, as accurate as can be reasonably and economically obtained, on its assets, its activities and its products.

Collectively, this information will give a measure of the State Park System - what its various resources are, what it does with them, and what are the useful results of its activities. Such information will allow this organization to broadly view itself and the workings of the State Park System at a specific point in time and, when comparing this view with those taken at other points in time, will allow one to see and to perhaps analyze the changes that have occurred.

It is a convention that the official number of classified units and major unclassified properties that constitute the State Park System is established on the first day of each fiscal year, July 1, and does not change during that year. The few parks and properties that may in actuality be added to (or removed from) the System during the year will not be included in the official total until the first day of the following fiscal year.

Reflecting this convention, **the State Park System contained a total of 259 classified units and 19 major unclassified properties, for a total of 278 areas, during the 2007/08 fiscal year.**

For management purposes, these units and properties were grouped into districts, many of which further organized them into smaller groupings called sectors. The 25 districts and 54 sectors used in this publication reflect the organizational arrangement of the System's "field" on the last day of the fiscal year, June 30, 2008.

This statistical report will focus exclusively on information that is related to or reflects on the State Park System's "field" areas and activities, the system's 278 classified units and major unclassified properties. Specifically excluded from the data on the System's "field" activities and expenditures is the small number of the

functions that serve the field and are situated in field locations outside of headquarters, but are functions which are not associated with specific units or districts, or which are considered an extension of the headquarters' responsibilities. These functions include the three regional service centers (which provide unit-level planning and technical assistance), the three regional communication centers, and the statewide personnel training center at Pacific Grove. Also excluded are the Museum Collections Section and the Archaeological Lab and Collections.

The operation and management of the State Park System parklands and facilities requires perhaps 80% of the effort and expenditure needed to operate California State Parks in which the State Park System is administratively located. Most of the remainder of the non-"field" costs excluded from this report are those for accomplishing the wide array of administrative and control functions that take place at the Sacramento, California headquarters. Also excluded are the costs of California State Parks' activities in managing those of its functions which are not at all related to the State Park System, mainly the administration of the state's many park and recreation grant programs, the provision of technical assistance services to local park and recreation agencies, and any expenses related to California State Parks' Office of Historic Preservation.

During the 2007/08 fiscal year, the State Park System was host to many tens of millions of visitors, cost hundreds of millions of dollars to manage and operate, employed more than two thousand permanent staff people, and generated tens of millions of dollars in fees and other revenues.

During the course of this fiscal year, the funds and staff allocated at the field level were applied to many critical objectives involving the protection and management of the State Park System's natural and cultural resources, as well as to the provision of high-quality resource-based outdoor recreation opportunities for park visitors. At the same time, staff provided the park visitors with a variety of direct services ranging from interpretive programs to public safety.

This report provides the end of the fiscal year's numerical information on many of the State Park System's most basic activities, revenues and expenditures, reflecting certain of the System's more measurable "inputs" and "outputs" for the collective 365-day period.

Some of this information, such as park acreage and visitor attendance, is available at the level of the individual unit or property. Other information, such as a park's operating costs and staffing numbers, is not available at the level of an individual park or property. Such information is available only at the district level, where such resources are allocated as a single amount, so as to allow the manager to make flexible sub-allocations to various units based on needs that shift throughout the year.

In general, this statistical report contains the most basic data for the 2007/08 fiscal year, as well as some analysis of this information. It also contains reference to important specialized System data that is not widely available, but which may be directly obtained from identified staff members.

Chapter 1 highlights the salient points found in the report's data for the 2007/08 fiscal year, data which is found in detail in Chapter 3, and makes some analysis of this data's substance and significance. Where appropriate, comparisons may be made with similar data sets from earlier annual statistical reports or from other sources.

Chapter 2 briefly describes the size and organization of the State Park System as it existed at the end of the fiscal year, on June 30, 2008.

Chapter 3 is the core of this report, its multi-page table providing the selected statistical information on the 278 classified units and major unclassified properties that constituted the State Park System during the 2007/08 fiscal year. The data categories and their sequence on the table are arranged so as to provide maximum comparability with the layout of previous statistical reports.

Chapter 4 provides important information about the basic data that appears in the table in Chapter 3. This includes definitions of the data categories and the terms that are used. Where important, the data collection methodology is described. This chapter also provides information on the known limitations in the scope and accuracy of this data, and indicates the source(s) within California State Parks where this data originates.

Chapter 5 provides information about and access to a variety of system-related data which is beyond the necessarily limited scope of this statistical report. The State Park System creates a wide variety of other data and information, often specialized in nature and not widely known or available. This chapter provides references and citations which refer the reader to a variety of more specialized data on the State Park System's field activity, management and operations.

Chapter 6 provides information on the history of California State Parks' annual statistical report series and on its predecessor documents. It provides specific titles of documents containing basic data reaching back many decades.

Appendix A briefly refers the reader to Appendix A of the 2001/02 *Statistical Report*, which provided key data for the fiscal years from 1990/2001 through 2000/01, when such reports were not prepared.

Appendix B provides information on the methodology and the results of the detailed inventory used to develop data on the State Park System's three basic types of public use facilities –overnight use (mainly camping), picnicking, and (non-motorized) trail mileage – used in this report. This survey also contains information

on the capability of these facilities to accommodate visitors, of their “carrying capacity.”

Appendix C provides, as a matter of having a complete record of the State Park System’s classified units, basic information for its 84 classified internal units, which are specialized units situated within the boundaries of certain other classified units. This appendix also identifies and provides limited data on a handful of small or minor properties which in 2007/08 were owned by California State Parks but which were not associated with any of the State Park System’s set of 278 classified parks and major unclassified properties.

Appendix D contains an organization chart of California State Parks, included here mainly to indicate the relationship of the State Park System’s field units to the rest of the system and to California State Parks as a whole.

Appendix E provides references to sources of statistical data and other information about the State Park System and to collections of written materials which exist both internal to and external to California State Parks. This information is very different from and does not duplicate the “Other Available Statistics” provided in Chapter 5 or the “Selected Data” referred to in Appendix A.

A new and revised edition of this statistical report will be produced following the close of each fiscal year. Readers’ suggestions for additions and improvements to this regularly issued document may be made to California State Parks, Planning Division.

CHAPTER 1 - SUMMARY AND ANALYSIS

The purpose of this statistical report is to provide selected data sets which portray the fundamental measures of California State Parks for the 2007/08 fiscal year. Collectively, this data shows the scope and scale of the State Park System, its activities and operations, and offers implications as to the benefits derived by its users. This large amount of data has been assembled in the extensive table that is the basis of Chapter 3.

The purpose of this chapter is to draw from the data found in Chapter 3 and to highlight its major findings. In many cases, data from the 2007/08 report will be compared with that from the 2006/07 report, revealing changes over time. Where possible, some commentary will be made on the data or its trends, bringing useful perspective to the information presented.

The ability to compare data through time will be limited due to the lack of detailed statistical information from the eleven years 1990/01 through 2000/01, during which time statistical reports were not prepared (see Appendix A).

This report's summary and analysis is limited to the system-wide totals of the various data sets. This statistical report's summary, with its commentary and analysis, follows. For definitions of the data categories, see Chapter 4.

* * * * *

Number of Units and Properties - The total figure of basic classified units and major unclassified properties remained at 278.

Acreage, California State Parks Owned - The total of 1,310,443.3 acres reflects an increase of ~0.12% (1,594.85 acres) over the previous year. Some of the major acquisitions were:

- Through a land use restriction easement 2,691.83 acres were added to Colonel Allensworth SHP.
- Auburn SRA's size was increased by 377.33 acres by acquisition/donation from the Trust for Public Land.
- The Peninsula Open Space Trust was instrumental in adding 266.93 acres to San Gregorio SB.
- Pfeiffer Big Sur SP increased by 211.24 acres with land acquired from Monterey County.

Acreage, Other - The total of 250,179.9 acres shows an increase of ~1.04% (2,602.13 acres) from the previous fiscal year report.

Total Acreage - The State Park System's total acreage, a data category not reported in the table, is the total of the two previous figures. At 1,560,623.2 acres, this total reflects an increase of ~0.27% (4,196.98 acres) from the previous fiscal year.

Waterfront Feet - The total of the four categories of waterfront footage is 8,628,218. (the equivalent of 1,634.13 miles), a 0.22% increase over the previous year. The waterfront length related to the shoreline of lakes and reservoirs ("L") is 3,410,367 linear feet (or ~646 miles), a 0.29% increase. The length of frontage on the Pacific Ocean and its major bays and estuaries ("O") is 1,665,476 linear feet (the equivalent of 315.43 miles), a 0.3% increase. The length of river footage ("R") is 1,731,765 linear feet (the equivalent of 327.99 miles), a 0.24% gain. The length of submerged footage ("S") remained the same at 1,820,610 linear feet (the equivalent of 344.81 miles).

All waterfront feet reported reflects actual footage that is owned or managed by California State Parks. Some units within the system include waterfront footage that is operated by entities outside California State Parks.

Individual Camp Sites - A total of 13,542 individual sites, as defined in Chapter 4 and determined by the survey described in Appendix B existed in the State Park System in the 2007/08 fiscal year. These data reflect a decrease of 722 individual camp sites from the previous year, a 5.33% drop.*

Because of the way individual camp sites (sometimes labeled as "family camp sites") have been variously defined and counted over the last three decades, this figure cannot be usefully compared with any "information" earlier than fiscal year 2001/02. Over the last twenty years, estimates have run as high as 17,772 sites.

Group Camp Sites - A total of 321 such sites, as defined in Chapter 4 and determined by the survey described in Appendix B, existed in the State Park System in the 2007/08 fiscal year. This number reflects a gain of 59 sites.*

Non-Camping Overnight Facilities - There were 645 such facilities, as defined in Chapter 4 and determined by the survey described in Appendix B, existing in the State Park System. The number of non-camping overnight facilities increased 0.31% (2 enumeration units) from the previous year. These facilities were a range of accommodations which include rooms in commercial lodging, cabins and the use of space in hostels.

Individual Picnic Sites - A total of 6,811 such facilities, as defined in Chapter 4 and determined by the survey described in Appendix B, existed in the State Park System. This reflects a 1.51% decrease in individual picnic sites from the previous year.*

Group Picnic Sites - A total of 208 facilities, as defined in Chapter 4 and determined by the survey described in Appendix B, existed in the System. These data show a 13.46% decrease in group picnic sites from the previous year.*

Non-Motorized Trail Miles - A total of 4,377.85 miles, as defined in Chapter 4 and determined by the survey described in Appendix B, existed in the System. This is an 5.14% decrease or 224.95 miles more than that reported in the previous year. This discrepancy is almost entirely the result of field unit respondents correcting their prior year's data, not of changes in the actual number of trails.*

Visitor Attendance – Day Use - The total of 69,001,333 day use visitors included both those who paid an admission fee and those who were admitted free. Almost three quarters (70.58%) of all day use visits are unpaid or free. This total figure reflected a decrease of 3.91% over the previous fiscal year. Since the tabulation of visitor attendance includes many variables, any explanation of this increase is speculative.

Visitor Attendance – Camping - This figure reached a total of 7,477,852 overnight uses, a decrease of 10.03% over the previous fiscal year. Note that the camping attendance contains only some of the overnight use of the system that takes place in structures, as explained in Appendix B. This situation makes it impossible to make a valid correlation between the total of overnight public use facilities and overnight visitor attendance.

Visitor Attendance – Total - This figure reached 76,479,185 a decrease of 4.54% over the previous fiscal year report.

It should be noted that the State Park System's unit-level attendance figures, with few exceptions, are based on estimates rather than actual counts. In addition, the total attendance for the State Park System as a whole is believed to be substantially underestimated. The circumstances surrounding both of these factors are discussed as part of the definition of "visitor attendance", found in Chapter 4.

Revenue - User Fees - The total of \$75,806,403 reflects a 3.34% increase over the previous fiscal year. Visitor fees did not change during the 2007/08 fiscal year.

Revenue – Concessions - The total of \$12,105,857 reflects an increase of 0.94% over the previous year.

Revenue – Miscellaneous - The total of \$547,838 reflects an increase of 12.96% over the previous year.

Total Revenue - The System's total revenue of \$88,460,098, the sum of the above three categories, reflects an increase of 3.08% from the prior fiscal year. The three revenue categories listed above, based on California State Parks' "earnings", constitute an important part of the State Park and Recreation Fund (SPRF).

Highlighted data modified per errata.

Operating Costs: The authorized base budget for field operations was a total of \$199,215,810, an increase of 14.58% over the previous fiscal year.

Revenue as a % of Operating Costs - In the 2007/08 fiscal year, the total revenue was 44.4% of the field operating costs for the System as a whole, compared to 50.4% the previous fiscal year.

Authorized Permanent Full-Time Positions - The total of 1,816.4 positions for the 2007/08 fiscal year reflected an increase of 1.65% over the previous year.

Authorized Temporary Positions - In terms of person-year (PY) equivalents, a total of 799.10 positions reflected an increase of 8.78% over the previous fiscal year.

* The data collection methodology for the Park Unit Facility Survey was refined to capture more accurate figures. While comparisons to the previous Statistical Report might indicate substantial changes, it is believed that the actual changes have been minimal.

CHAPTER 2 - PARK SYSTEM SIZE AND SCOPE

At the commencement of and during the entire 2007/08 fiscal year, beginning on July 1, 2007, the State Park System consisted of 278 properties. Of these, 259 were units that have been classified. The other 19 were major unclassified properties for which classification as distinct new units could be anticipated at some future date. All of these specific units and properties are identified by name on Lists 1 and 2 of the July 1, 2007 edition of the publication *Planning Milestones for the Park Units and Major Properties of the California State Park System*. The number and distribution of these properties, by classification, is as follows:

State Park (SP)	84
State Beach (SB)	64
State Historic Park (SHP)	51
State Recreation Area (SRA)	32
State Natural Reserve (SNR)	17
State Vehicular Recreation Area (SVRA)	8
State Historical Monument (SHM)	1
State Seashore (SS)	1
Wayside Campground (WC)	1
State Cultural Reserve	0
Underwater Recreation Area	<u>0</u>
Classified Units	259
Major Unclassified Properties	<u>19</u>
Total – State Park System	278

The California Resources Code, Sections 5019.50 *et seq*, describes and characterizes each of the nine classifications listed above. The code indicates in general terms the types of features and general qualities inherent in a unit that is given a particular classification, and also provides guidance as to the sort of management to be accorded to such a unit.

State Vehicular Recreation Areas are technically part of the State Vehicular Recreation and Trails System which, by legislation, is organizationally separate from the State Park System. For this reason, much of the data for the two systems are collected separately. The data for the two systems; however, is brought together for the purposes of this statistical report.

Located within and being an integral part of many of the State Park System's 259 units with the classifications indicated above, there were an additional 84 units which were identified by three other classifications. These other classifications call

for enhanced, specialized protection and management for the noteworthy features or qualities found in the unit in question. Commonly termed “internal units”, and found on List 3 of the *Planning Milestones* publication cited above, the number and distribution of these units, by classification, is as follows:

Cultural Preserve (CP)	14
Natural Preserve (NP)	60
State Wilderness (SW)	<u>10</u>
Total – Internal Units	84

The State Wilderness units, in addition to being part of the State Park System, are also part of a larger California Wilderness Preservation System, as defined in Public Resources Code Section 5093.3.

In addition to the lands noted above, which constitute the official State Park System, California State Parks owns a number of small or minor properties that are not related to any of the System’s classified units or major unclassified properties. Information on these minor State Park System properties appears in Table C-2, in Appendix C.

The State Park System’s 278 classified units and major unclassified properties are administered through districts, groupings based largely on their geographic proximity. Larger districts are often subdivided for management purposes into smaller areas called sectors. During the 2007/08 fiscal year, the units and properties of the State Park System were administered through 25 districts (5 of them being Off Highway Motor Vehicle Recreation (OHMVR) districts managing the units classified as SVRAs). The 20 non-OHMVR districts contained, collectively, a total of 57 sectors.

It is important to note the manner in which any change in the size or composition of the State Park System is officially determined; a matter alluded to in this report’s Introduction. Because the California State Park and Recreation Commission may name and classify property at its meetings, and new properties may come into system ownership during the year, the size of the State Park System may change over the course of a fiscal year. To transform this natural periodic fluctuation to an administratively useful once-a-year change, California State Parks has adopted a convention which deems the State Park System to have a single size and composition, unchanging over the course of an entire fiscal year.

By this convention, the official size and composition of the State Park System is changed only once a year, on each July 1. To accomplish this, the changes that have been made during a year, as well as candidates for changes still needed to be made in updating the State Park System’s official list of units and properties, are all identified in late June.

These changes can include the addition, removal or combining of specific units or properties. They can include changes of unit or property names, and changes in unit classifications. Such changes, both already accomplished or proposed, are discussed in late June of each year by California State Parks' Planning Policy and Programming Committee. Its recommendations for desirable changes are submitted near the end of the fiscal year to the Director of California State Parks for approval. Those changes which are approved by the Director in late June become official on July 1. These changes modify the existing set of State Park System units and properties and the new official set for the next fiscal year appears in that year's July 1 edition of California State Parks' annual *Planning Milestones* publication.

Changes in the State Park System's set of districts, their boundaries or names, are the result of administrative decisions, proposals for which are approved by the Deputy Director of Park Operations and the Director of California State Parks. Such changes may be made at any point in the fiscal year. The same is true for changes made in the boundaries of the sectors within districts. The districts and sectors reported in this statistical report are those that were in place on June 30, 2008, at the end of the 2007/08 fiscal year.

CHAPTER 3 - BASIC PARK SYSTEM STATISTICS

The following set of pages presents a single table which contains data providing the basic statistics which measure selected aspects of the scale, activity and operation of the California State Park System during the 2007/08 fiscal year.

In this table, the individual districts of the basic State Park System, as they existed at the end of the fiscal year, are presented alphabetically and, within each district, its sectors are arranged alphabetically. When classified units and major unclassified properties are managed out of a district office, that district office is - for the purpose of this report only - considered a *de facto* sector. Within each sector, the classified units and major unclassified properties are listed alphabetically. Internal classified units do not appear in this table, to avoid the double counting that would result in including their statistics along with those for the unit in which they are situated. Basic information on internal classified units appears in Appendix C.

The table has four parts that are joined sequentially. The first part provides information, on a district by district basis, for each of the non-OHMVR districts. The second provides the totals for each of the non-OHMVR districts and the totals for all of the non-OHMVR districts, combined. The third provides both the detailed information and the totals for the five districts of the OHMVR Division. The last part combines the totals for all 25 districts, giving the total for the State Park System as a whole. To this total is added the information for minor system properties which, when combined, give the grand total for all of the properties of California State Parks.

For each entry, the names of the classified units are followed immediately by their classifications, in abbreviated form. The names of the major unclassified projects appear as names only, without being otherwise indicated by a word like "project" or "property" unless that designation has been officially added to the name of the project or property.

Thirty major units and properties in the State Park System (17,248.2450 acres) are operated not by the state but instead by local government park agencies or by non-profit organizations, acting through individual operating agreements with California State Parks. The names of these units and properties appear in italics. Their acreage data is included in the State Park System's subtotals and totals, but in many cases there is no available information on their other characteristics - their facilities, visitor attendance, operation costs, and the like.

For certain of those units and properties which are operated by the State Park System, no attendance is reported. These are usually small, isolated, little

developed and little-visited units where counting visitors or collecting entrance fees would not justify the costs of doing so.

Most of the data in the table is available and reported on the basis of the individual unit or property. However, in cases of data on such topics as operating cost and staffing, the reported data is of the allocations of these resources made by headquarters to the district. This allows the district to be flexible in allocating (and reallocating) its funds to its sectors and individual units in the course of the year. Therefore, there are no unit-level allocations shown in these categories. Also, in the case of revenues, some of these monies come not into individual units but instead into the district or sector offices; these are recorded as district or sector income rather than unit income.

Some of the categories of information in this chapter's table, which appear as column headings, contain data which is current as of either the beginning or the end of the fiscal year. The remainder of the data categories reflects activity which occurs during the course of the fiscal year, between the first and last day.

Categories with data which are current as of the first day of the fiscal year, July 1, are those which define the State Park System for the entire year. This information corresponds exactly with the classified units and major unclassified properties (Lists 1 and 2) of the publication *Planning Milestones for the Park Units and Major Unclassified Properties of the California State Park System* which is dated July 1 of the previous year. These categories are:

- Unit name and classification, or name of the major unclassified property
- Unit number
- County or counties in which the unit or property is located

The following categories of information in the table show what is valid or in place as of the last day of the fiscal year, June 30. These categories are:

- District name
- Sector name
- Acreage - state owned
- Acreage - other
- Waterfront feet – separated into lake (“L”), ocean (“O”), river (“R”) and submerged (“S”).
- Public use facilities - individual camp sites
- Public use facilities - group camp sites
- Public use facilities - non-camping overnight facilities per individual unit (e.g. rooms, cabins, yurts, etc.)
- Public use facilities - individual picnic sites
- Public use facilities - group picnic sites
- Public use facilities - non-motorized trail miles

The last categories of information indicate activity undertaken, revenue generated, or resources expended over the 365-day course of the year, from July 1 through June 30. These categories are:

- Visitor attendance - day use
- Visitor attendance - camping
- Revenue - user fees
- Revenue - concessions
- Revenue – miscellaneous
- Revenue - total
- Operating costs
- Revenue as a percent of operating costs
- Authorized staffing levels - permanent full-time
- Authorized staffing levels - temporary, in PY (person-year) equivalents

Definitions of these data categories may be found in Chapter 4.

Two symbols which appear in the table, defined as follows, are used so as to leave no space or cell empty.

- A zero (“0”) is put in a space where there could be a number, indicating that the actual number is zero.
- A dash (“-”) is put in a space where the appropriate information does not exist or is unavailable, either because it is not collected (e.g. attendance of small or remote units) or because it is not computed for record-keeping purposes (e.g. the unit allocation of a lump-sum amount of district funding).

UNITS AND PROPERTIES OF THE CALIFORNIA STATE PARK SYSTEM

Fiscal Year 2007/08

DISTRICT / Sector / Park Unit	Unit No.	County	Year Aq.	ACREAGE		Waterfront Feet L = Lake O = Ocean R = River S = Submerged	PUBLIC USE FACILITIES						
				California State Parks Owned	Other		Individual Camp Sites	Group Camp Sites	Non-Camping Overnight Facilities	Individual Picnic Sites	Group Picnic Sites	Non-Motorized Trail Miles	
ANGELES DISTRICT													
Angeles District HQ Office													
Los Angeles Sector													
Castaic Lake SRA	569	LA	1984	0.00	4,223.62	218,943 L	0	2	0	35	4	3.40	
Dockweiler SB	541	LA	1948	91.40	0.00	19,800 O	118	0	0	0	0	0.00	
Kenneth Hahn SRA	516	LA	1984	400.58	0.00		0	0	0	14	0	0.00	
Los Angeles SHP	578	LA	2001	32.00	0.00		0	0	0	0	0	6.00	
Los Encinos SHP	546	LA	1949	4.73	0.00		0	0	0	3	1	2.00	
Pío Pico SHP	551	LA	1917	1.12	4.35		0	0	0	4	5	0.00	
Placerita Canyon SP	552	LA	1949	341.72	0.00		0	3	0	6	3	5.60	
Rio de Los Angeles State Park SRA	563	LA	2001	58.22	0.00	3,376 R	0	0	0	0	0	0.00	
Santa Monica SB	557	LA	1948	27.21	21.27	9,794 O	0	0	0	0	0	0.50	
Santa Susana Pass SHP	505	LA	1979	670.68	0.00		0	0	0	0	0	0.00	
Verdugo Mountains	597	LA	1949	251.41	0.00		0	0	0	0	0	11.20	
Watts Towers of Simon Rodia SHP	518	LA	1917	0.11	0.00		0	0	0	0	0	0.00	
Will Rogers SB	562	LA	1979	82.14	0.00	16,630 O	0	0	0	0	0	0.00	
Malibu Sector													
Leo Carrillo SP	540	LA VEN	1953	2,397.04 116.41	0.00 2.46	13,108 O	142	1	0	6	0	0.00	
Malibu Creek SP	537	LA	1974	7,953.45	63.86		63	1	0	50	1	1.00	
Malibu Lagoon SB	548	LA	1951	67.65	42.18	2,404 O 1,785,960 S	0	0	0	0	0	7.10	
Point Dume SB	533	VEN	1966	31.87	4.44	2,927 O	0	0	0	0	0	0.00	
Point Mugu SP	573	VEN	1966	13,925.15	21.46	19,224 O	72	3	0	30	0	0.50	
Robert H. Meyer Memorial SB	590	LA	1978	37.04	0.00	2,342 O	0	0	0	6	0	0.10	
Topanga Sector													
Topanga SP	572	LA	1967	12,655.02	10.75		8	0	0	16	1	59.05	
Will Rogers SHP	559	LA	1967	189.12	0.00		0	0	0	12	3	8.00	
ANGELES DISTRICT TOTALS				39,334.07	4,394.39	218,943 L 3,376 R 86,229 O 1,785,960 S	403	10	0	182	18	104.45	

Highlighted data modified per errata.

CAPITAL DISTRICT

Capital District HQ Office

(No sector organization. Attached directly to district)

Woodland Opera House SHP	327	YOL	1980	0.26	0.00	0	0	0	0	0	0	1.50	
California Indian Heritage Center Sector													
State Indian Museum (SHP)	309	SAC	1914	0.00	0.00	0	0	0	0	0	0	1.10	
Stanford Mansion Sector													
Leland Stanford Mansion SHP	328	SAC	1978	0.88	0.00	0	0	0	0	0	0	0.00	
Sacramento History and Railroad Sector													
Old Sacramento SHP	372	SAC	1967	293.25	0.16	1,065 R	0	0	0	12	0	0.50	
Railtown 1897 SHP	335	TUO	1982	23.44	0.75	0	0	0	0	15	2	0.25	
Sutter's Fort SHP	308	SAC	1914	5.80	0.00	0	0	0	0	0	0	22.00	
State Capital and Governor's Mansion Sector													
California State Capitol Museum	357	SAC	1982	-	-	0	0	0	0	0	0	0.00	
Governor's Mansion SHP	377	SAC	1968	0.78	0.00	0	0	0	0	0	0	1.50	
CAPITAL DISTRICT TOTALS				324.41	0.91	1,065 R	0	0	0	27	2	26.85	

UNITS AND PROPERTIES OF THE CALIFORNIA STATE PARK SYSTEM

Fiscal Year 2007/08

VISITOR ATTENDANCE				REVENUE				AUTHORIZED BASE BUDGET	AUTHORIZED STAFFING LEVELS		
Paid Day Use	Free Day Use	Camping	Total	User Fees	Concessions	Misc.	Total	Operating Costs (\$)	Revenue as % of Oper. Cost	Perm Full Time	Temp.
ANGELES DISTRICT											
				\$7,385	\$0	\$0	\$7,385	\$9,898,652		21.0	
				\$13,222	\$0	\$0	\$13,222			16.0	
-	-	-	0	-	-	-	\$0				
-	-	-	0	-	-	-	\$0				
-	-	-	0	-	-	-	\$0				
-	-	-	0	-	-	-	\$0				
2,900	16,035	0	18,935	\$2,860	\$0	\$0	\$2,860				
-	7,567	-	7,567	-	-	-	-				
-	-	-	0	-	-	-	\$0				
-	-	-	0	-	-	-	\$0				
-	-	-	0	-	-	-	\$0				
0	11,775	1	11,776	-	-	-	\$0				
0	0	0	0	-	-	-	\$0				
-	-	-	0	-	-	-	\$0				
-	-	-	0	-	-	-	\$0				
				\$6,152	\$0	\$0	\$6,152			41.0	
105,838	165,434	157,486	428,758	\$1,296,812	\$26,019	\$10	\$1,322,841				
174,696	156,240	68,151	399,087	\$598,834	\$706	\$51	\$599,591				
59,401	32,267	0	91,668	\$147,258	\$58,566	\$0	\$205,824				
-	-	-	0	-	-	-	\$0				
120,396	105,005	136,099	361,500	\$940,413	\$1,124	\$145	\$941,681				
78,798	525,092	0	603,890	\$67,015	\$0	\$0	\$67,015				
				\$7,200	\$0	\$0	\$7,200			17.0	
19,197	252,236	239	271,672	\$64,581	\$91,868	\$0	\$156,449				
146,357	58,306	0	204,663	\$349,656	\$21,328	\$0	\$370,984				
707,583	1,329,957	361,976	2,399,516	\$3,501,387	\$199,611	\$206	\$3,701,204	\$9,898,652	37.4%	95.0	37.6
Highlighed data modified per errata.											
CAPITAL DISTRICT											
							\$0	\$7,939,265		11.0	
-	-	-	0	-	-	-	\$0				
							\$0			18.9	
12,849	20,383	0	33,232	\$21,690	\$0	\$0	\$21,690				
				\$46,330	\$0	\$0	\$46,330			14.0	
5,738	5,511	0	11,249	-	-	-	\$0				
				\$1,162,801	\$55,167	\$238	\$1,218,206			33.5	
181,097	186,724	0	367,821	\$2,105	\$0	\$0	\$2,105				
18,001	64,205	0	82,206	-	-	-	\$0				
64,962	43,397	0	108,359	\$201,165	\$0	\$0	\$201,165				
							\$0			18.0	
-	505,318	0	505,318	-	-	-	\$0				
8,632	21,515	0	30,147	\$30,856	\$0	\$0	\$30,856				
291,279	847,053	0	1,138,332	\$1,464,947	\$55,167	\$238	\$1,520,351	\$7,939,265	19.1%	95.4	32.6
Highlighed data modified per errata.											

Staffing level data for the Capital District based on FY2006/07 district organizational structure and does not precisely fit with FY 2007/08 org structure.

UNITS AND PROPERTIES OF THE CALIFORNIA STATE PARK SYSTEM

Fiscal Year 2007/08

DISTRICT / Sector / Park Unit	Unit No.	County	Year Aq.	ACREAGE		Waterfront Feet L = Lake O = Ocean R = River S = Submerged	PUBLIC USE FACILITIES					
				California State Parks Owned	Other		Individual Camp Sites	Group Camp Sites	Non- Camping Overnight Facilities	Individual Picnic Sites	Group Picnic Sites	Non- Motorized Trail Miles
CENTRAL VALLEY DISTRICT												
Central Valley District HQ Office												
Calaveras Sector												
Bethany Reservoir SRA	744	ALA	1974	0.00	608.54	29,400 L	0	0	0	8	0	2.00
Calaveras Big Trees SP	306	CAL TUO	1931	2,819.36 3,678.70	0.00 0.00	26,400 R	135	2	0	50	1	15.00
Caswell Memorial SP	316	SJ	1952	258.13	0.00	24,375 R	0	1	0	30	1	3.00
Columbia SHP	307	TUO	1946	251.99	20.60		0	0	24	25	3	3.00
Indian Grinding Rock SHP	373	AMA	1962	135.43	0.00		24	0	6	5	1	29.50
Turlock Lake SRA	311	STA	1950	0.00	3,558.80	12,000 L	63	0	0	50	0	6.00
Four Rivers Sector												
George J. Hatfield SRA	312	MER	1953	46.50	0.00	7,300 R	15	1	0	10	0	6.00
Great Valley Grasslands SP	352	MER	1982	2,826.00	0.00	16,900 R	0	0	0	0	0	14.30
McConnell SRA	310	MER	1949	74.26	0.00	6,065 R	21	2	0	20	0	1.00
Pacheco SP	369	MER SCL	1960	6,253.50 640.35	0.00 0.00		9	2	0	9	0	27.00
San Luis Reservoir SRA	333	MER	1969	0.00	26,035.68	480,510 L	113	3	0	150	5	13.50
San Joaquin Sector												
California State Mining & Mineral Museum	707	SJ	1999	0.00	0.00		0	0	0	0	0	3.50
Millerton Lake SRA	378	FRE MAD	1957	302.50 1.52	5,777.03 776.43	233,040 L	228	6	0	211	3	19.00
Wassama Round House SHP	376	MAD	1978	26.61	0.00		0	0	0	6	0	0.00
CENTRAL VALLEY DISTRICT TOTALS				17,314.85	36,777.08	754,950 L 81,040 R	608	17	30	574	14	142.80
CHANNEL COAST DISTRICT												
Channel Coast District HQ Office												
(No sector organization. Attached directly to district)												
El Presidio de Santa Barbara SHP	575	SB	1966	5.52	0.00		0	0	0	0	0	0.00
Carpinteria Sector												
Carpinteria SB	514	SB VEN	1932	60.08 2.21	0.00 0.00	4,685 O	227	7	0	20	2	0.00
La Purisima Sector												
Chumash Painted Cave SHP	525	SB	1976	7.50	0.00		0	0	0	0	0	0.30
La Purisima Mission SHP	513	SB	1935	1,934.31	0.00		0	0	0	10	0	26.00
Point Sal SB	535	SB	1948	84.03	0.00	8,800 O	0	0	0	0	0	0.50
Santa Barbara Sector												
El Capitán SB	519	SB	1953	2,633.98	0.00	9,750 O	137	5	0	19	0	4.40
Gaviota SP	542	SB	1953	2,738.03	5.84	32,020 O	40	0	0	8	0	17.00
Refugio SB	527	SB	1950	155.08	750.00	33,055 O	68	3	0	52	0	3.40
Ventura Sector												
Emma Wood SB	530	VEN	1957	109.20	2.71	16,200 O 1,550 R	91	5	0	8	0	1.50
Mandalay SB	676	VEN	1985	92.12	0.00	2,920 O	0	0	0	0	0	6.00
McGrath SB	567	VEN	1948	312.39	2.06	13,445 O	163	27	0	0	0	16.50
San Buenaventura SB	515	VEN	1961	109.13	0.95	8,920 O	0	0	0	76	44	5.00
CHANNEL COAST DISTRICT TOTALS				8,243.58	761.56	129,795 O 1,550 R	726	47	0	193	46	80.60
Highlighted data modified per errata.												
COLORADO DESERT DISTRICT												
Colorado Desert District HQ Office												
Anza-Borrego Sector												
Anza-Borrego Desert SP	622	IMP RIV SD	1933	14,709.57 37,626.69 531,834.20	0.00 0.00 1.93	6,000 L	153	15	0	3	0	542.00
Montane Sector												
Cuyamaca Rancho SP	618	SD	1933	24,693.21	0.00		176	3	6	72	1	92.60
Palomar Mountain SP	617	SD	1932	1,908.54	0.00		32	3	0	16	0	15.00
Salton Sea Sector												
Indio Hills Palms Project	646	RIV	1983	5,644.14	0.00		0	0	0	0	0	0.00
Picacho SRA	658	IMP	1960	510.60	6,248.00	7,160 L 44,005 R	69	9	0	8	0	3.70
Salton Sea SRA	623	IMP RIV	1951	435.70 2,868.37	7,322.00 6,274.85	82,120 L	830	1	0	25	2	4.25
COLORADO DESERT DISTRICT TOTALS				620,231.02	19,846.78	95,280 L 44,005 R	1,260	31	6	124	3	657.55

UNITS AND PROPERTIES OF THE CALIFORNIA STATE PARK SYSTEM

Fiscal Year 2007/08

VISITOR ATTENDANCE				REVENUE				AUTHORIZED BASE BUDGET	AUTHORIZED STAFFING LEVELS		
Paid Day Use	Free Day Use	Camping	Total	User Fees	Concessions	Misc.	Total	Operating Costs (\$)	Revenue as % of Oper. Cost	Perm Full Time	Temp.
CENTRAL VALLEY DISTRICT											
							\$0	\$8,794,550		17.0	
							\$0			25.5	
0	25,317	0	25,317	-	-	-	\$0				
131,894	17,276	43,349	192,519	\$529,824	\$0	\$1,143	\$530,967				
17,880	46,794	18,751	83,425	\$148,573	\$0	\$0	\$148,573				
0	561,624	0	561,624	\$168	\$250,011	\$57	\$250,236				
9,816	27,678	7,804	45,298	\$45,373	\$0	\$0	\$45,373				
36,451	11,593	10,968	59,012	\$151,523	\$0	\$0	\$151,523			9.0	
3,987	7,576	2,722	14,285	(\$20)	\$0	\$0	(\$20)			25.0	
0	14,321	0	14,321	-	-	-	\$0				
24,055	10,305	6,238	40,598	\$88,568	\$0	\$0	\$88,568				
1,710	2,599	0	4,309	-	-	-	\$0				
381,168	47,257	26,293	454,718	\$623,583	\$2,417	\$121	\$626,121				
							\$0			23.0	
6,889	7,821	0	14,710	\$13,806	\$0	\$0	\$13,806			2.5	
237,880	3,616	51,311	292,807	\$864,799	\$49,332	\$3,502	\$917,633				
-	-	-	0	-	-	-	\$0				
851,730	783,777	167,436	1,802,943	\$2,483,175	\$301,760	\$4,823	\$2,789,758	\$8,794,550	31.7%	102.0	23.9
Highlighed data modified per errata.											
CHANNEL COAST DISTRICT											
				\$4,836	\$19,683	\$0	\$24,519	\$7,230,829		15.0	
			0	-	-	-	\$0				
				(\$58)	\$0	\$0	(\$58)				
83,280	373,082	421,965	878,327	\$2,229,393	\$0	\$25	\$2,229,418				
				\$31,576	\$0	\$0	\$31,576			7.0	
0	0	0	0	-	-	-	\$0				
36,308	67,395	0	103,703	\$23,632	\$0	\$0	\$23,632				
6	470	0	476	-	-	-	\$0				
							\$0			18.0	
45,861	0	97,165	143,026	\$1,092,404	\$11,348	\$0	\$1,103,751				
39,869	101	18,326	58,296	\$243,055	\$2,427	\$0	\$245,482				
54,224	59	65,218	119,501	\$781,260	\$0	\$0	\$781,260				
							\$0			29.0	
24,810	38,317	73,924	137,051	\$403,644	\$0	\$0	\$403,644				
			0	-	-	-	\$0				
10,809	504	185,884	197,197	\$700,674	\$0	\$0	\$700,674				
109,975	17,133	0	127,108	\$246,051	\$18,765	\$0	\$264,816				
405,142	497,061	862,482	1,764,685	\$5,756,465	\$52,223	\$25	\$5,808,713	\$7,230,829	80.3%	69.0	39.9
Highlighed data modified per errata.											
COLORADO DESERT DISTRICT											
				\$9,826	\$8,558	\$0	\$18,384	\$6,512,723		19.0	
							\$0			20.0	
36,952	444,791	119,361	601,104	\$422,874	\$353	\$3,007	\$426,234				
				\$3,318	\$0	\$0	\$3,318			12.0	
46,900	278,652	82,225	407,777	\$383,737	\$4,916	\$460	\$389,113				
12,816	30,178	37,120	80,114	\$118,467	\$9,956	\$0	\$128,423			3.0	
							\$0			9.0	
-	-	-	0	-	-	-	\$0				
8,562	86,310	18,038	112,910	\$52,357	\$323	\$0	\$52,680			4.0	
5,642	193,778	14,050	213,470	\$78,776	\$2,000	\$747	\$81,523				
110,872	1,033,709	270,794	1,415,375	\$1,069,355	\$26,106	\$4,214	\$1,099,675	\$6,512,723	16.9%	67.0	21.2
Highlighed data modified per errata.											

Carpinteria Sector staffing data included in Ventura Sector.

UNITS AND PROPERTIES OF THE CALIFORNIA STATE PARK SYSTEM

Fiscal Year 2007/08

DISTRICT / Sector / Park Unit	Unit No.	County	Year Aq.	ACREAGE		Waterfront Feet L = Lake O = Ocean R = River S = Submerged	PUBLIC USE FACILITIES						
				California State Parks Owned	Other		Individual Camp Sites	Group Camp Sites	Non-Camping Overnight Facilities	Individual Picnic Sites	Group Picnic Sites	Non-Motorized Trail Miles	
DIABLO VISTA DISTRICT													
Diablo Vista District HQ Office													
Bay Sector													
Albany SMR	223	ALA CC	1985					0	0	0	0	0	0.00
Candlestick Point SRA	214	SF	1979	204.88	0.00	3,930 O		0	0	0	48	4	3.00
(Cowell Ranch / Marsh Home) SHP	254	CC	1981	3,659.95	3.50	824 R		0	0	0	0	0	10.20
Eastshore State Park SS	220	ALA CC	1985	373.33 13.90	55.00 0.00	16,150 O 34,450 S		0	0	0	0	0	0.00
Emeryville Crescent SMR	225	ALA CC	1985					0	0	0	0	0	0.00
Lake Del Valle SRA	764	ALA	1967	387.27	3,344.59	103,000 L		150	9	0	260	12	43.70
Mount Diablo SP	203	CC	1931	20,123.61	0.00			64	5	0	114	3	146.00
Robert W. Crown Memorial SB	258	ALA	1949	132.22	0.00	7,760 O		0	0	0	16	6	2.50
San Bruno Mountain SP	205	SM	1980	297.60	0.00			0	0	0	8	0	8.90
Silverado Sector													
Annadel SP	246	SON	1971	5,092.65	0.78			0	0	0	8	0	41.40
Bale Grist Mill SHP	251	NAP	1974	0.75	0.00			0	0	0	6	0	40.00
Benicia SRA	224	SOL	1957	446.71	0.00	17,775 O		0	0	0	35	0	183.89
Benicia Capitol SHP	221	SOL	1951	0.86	0.00			0	0	0	0	0	0.00
Bothe-Napa Valley SP	240	NAP SON	1960	1,780.17 210.45	0.00 0.00			49	1	0	50	1	6.00
Jack London SHP	241	SON	1959	1,431.19	179.55			0	0	0	13	1	10.60
Petaluma Adobe SHP	219	SON	1951	41.16	0.00			0	0	0	14	0	0.00
Robert Louis Stevenson SP	215	LAK NAP SON	1949	276.73 3,636.86 1,544.38	0.00 568.23 0.00			0	0	0	0	0	12.80
Sonoma SHP	243	SON	1909	63.57	0.00			0	0	0	13	0	7.35
Sugarloaf Ridge SP	247	NAP SON	1964	138.50 3,644.70	0.00 0.00			50	1	0	26	0	22.40
DIABLO VISTA DISTRICT TOTALS				43,501.44	4,151.65	103,000 L 45,615 O 824 R 34,450 S		313	16	0	611	27	538.74
GOLD FIELDS DISTRICT													
Gold Fields District HQ Office													
Auburn SRA Sector													
Auburn SRA	398	ELD PLA	1966	377.33 0.00	12,000.00 30,000.00	388,000 R		39	0	0	0	0	0.00
Delta Sector													
Brannan Island SRA	314	SAC	1952	328.60	0.01	16,020 R		172	6	0	50	3	1.00
Delta Meadows	338	SAC	1985	470.60	1.12	3,200 R		0	0	0	0	0	0.00
Franks Tract SRA	329	CC	1959	3,522.83	0.18	8,000 R		0	0	0	0	0	1.50
Stone Lake	355	SAC	1978	1,089.55	0.00	21,300 L		0	0	0	0	0	0.93
Folsom Sector													
Folsom Lake SRA	318	ELD PLA SAC	1956	1,199.83 293.33 749.12	9,132.00 5,220.00 2,966.93	686,400 L		74	3	0	300	3	81.00
Folsom Powerhouse SHP	370	SAC	1956	18.67	16.33			0	0	0	4	0	0.38
Marshall Gold Sector													
Marshall Gold Discovery SHP	304	ELD	1889	574.87	0.88	5,870 R		0	0	0	158	3	3.00
GOLD FIELDS DISTRICT TOTALS				8,624.73	59,337.45	707,700 L 421,090 R		285	9	0	512	9	87.81

UNITS AND PROPERTIES OF THE CALIFORNIA STATE PARK SYSTEM

Fiscal Year 2007/08

VISITOR ATTENDANCE				REVENUE				AUTHORIZED BASE BUDGET	AUTHORIZED STAFFING LEVELS		
Paid Day Use	Free Day Use	Camping	Total	User Fees	Concessions	Misc.	Total	Operating Costs (\$)	Revenue as % of Oper. Cost	Perm Full Time	Temp.
DIABLO VISTA DISTRICT											
				\$639	\$0	\$42	\$681	\$6,823,173		17.0	
				(\$137)	\$0	\$0	(\$137)			24.0	
-	-	-	0	-	-	-	\$0				
15,200	200,283	0	215,483	\$64,646	\$585,531	\$0	\$650,177				
0	0	0	0	-	-	-	\$0				
0	0	0	0	-	-	-	\$0				
-	-	-	-	-	-	-	\$0				
-	-	-	0	-	-	-	\$0				
185,354	47,693	14,236	247,283	\$514,510	\$365,130	\$56	\$879,695				
-	-	-	0	-	-	-	\$0				
-	-	-	0	-	-	-	\$0				
				\$16,408	\$0	\$0	\$16,408			36.0	
8,597	81,113	0	89,710	\$15,079	\$0	\$0	\$15,079				
6,377	6,959		13,336	\$11,007	\$0	\$0	\$11,007				
21,428	229,900	0	251,328	\$33,911	\$0	\$0	\$33,911				
2,887	4,200	0	7,087	\$15,233	\$0	\$0	\$15,233				
22,607	3,877	36,282	62,766	\$277,232	\$6,528	\$0	\$283,760				
42,328	11,262	0	53,590	\$95,392	\$0	\$0	\$95,392				
4,069	21,102	0	25,171	\$7,993	\$0	\$0	\$7,993				
0	21,168	0	21,168	\$100	\$0	\$0	\$100				
41,495	417,870	0	459,365	\$97,505	\$39,150	\$0	\$136,655				
17,760	65,061	13,832	96,653	\$138,971	\$12,436	\$0	\$151,407				
368,102	1,110,488	64,350	1,542,940	\$1,288,489	\$1,008,774	\$98	\$2,297,361	\$6,823,173	33.7%	77.0	35.2
Highlighed data modified per errata.											
GOLD FIELDS DISTRICT											
				\$82,229	\$735	\$2,282	\$85,246	\$7,957,294		15.0	
				(\$5)	\$0	\$0	(\$5)			8.0	
173,473	445,924	15,934	635,331	\$5,341	\$0	\$0	\$5,341				
							\$0			10.0	
67,017	11,825	42,838	121,680	\$455,925	\$2,265	\$398	\$458,588				
0	10,537	3,169	13,706	-	-	-	\$0				
0	21,269	0	21,269	-	-	-	\$0				
-	-	-	0	-	-	-	\$0				
				\$0	\$192,593	\$10	\$192,603			39.0	
855,646	76,606	24,520	956,772	\$1,933,649	\$458	\$0	\$1,934,107				
0	0	0	0	-	-	-	\$0				
				\$91,049	\$15,075	\$0	\$106,124			9.0	
124,261	151,239	0	275,500	\$77,843	\$9,426	\$0	\$87,269				
1,220,397	717,400	86,461	2,024,258	\$2,646,031	\$220,552	\$2,690	\$2,869,273	\$7,957,294	36.1%	81.0	30.6
Highlighed data modified per errata.											

UNITS AND PROPERTIES OF THE CALIFORNIA STATE PARK SYSTEM

Fiscal Year 2007/08

DISTRICT / Sector / Park Unit	Unit No.	County	Year Aq.	ACREAGE		Waterfront Feet L = Lake O = Ocean R = River S = Submerged	PUBLIC USE FACILITIES					
				California State Parks Owned	Other		Individual Camp Sites	Group Camp Sites	Non- Camping Overnight Facilities	Individual Picnic Sites	Group Picnic Sites	Non- Motorized Trail Miles
INLAND EMPIRE DISTRICT												
Inland Empire District HQ Office												
Chino Sector												
California Citrus SHP	570	RIV	1984	247.52	0.00		0	0	0	7	1	19.00
				6,531.42	0.00							
Chino Hills SP	508	RIV	1981	296.45	0.01		20	5	0	5	1	203.00
		SBD		7,345.53	0.00							
Perris Sector												
Lake Perris SRA	665	RIV	1974	1,429.95	5,245.18	52,800 L	434	16	0	1,600	3	51.00
San Timoteo Canyon	506	RIV	2002	1,147.50	0.00		0	0	0	0	0	14.00
Wildwood Canyon	507	RIV	2002	855.95	0.00		0	0	0	0	0	20.00
San Jacinto Sector												
Mount San Jacinto SP	616	RIV	1930	13,717.95	0.00		80	0	0	9	1	26.25
INLAND EMPIRE DISTRICT TOTALS				31,572.27	5,245.19	52,800 L	534	21	0	1,621	6	333.25
MARIN DISTRICT												
Marin District HQ Office												
Angel Island Sector												
Angel Island SP	231	MRN SF	1955	728.85 9.04	17.82 0.00	23,000 O	37	2	0	45	4	15.21
Marin Sector												
China Camp SP	202	MRN	1976	1,514.30	0.00	8,500 O	31	0	0	58	1	17.00
Marconi Conference Center SHP	213	MRN	1976	62.40	0.00	2,900 O	0	0	37	0	0	4.20
Mount Tamalpais SP	239	MRN	1928	6,212.00	31.00	11,800 O	8	3	10	2	1	63.70
Olompali SHP	201	MRN	1977	700.00	0.00		0	0	0	17	0	6.03
Samuel P. Taylor SP	233	MRN	1946	2,614.99	92.22		62	5	0	45	2	14.30
Tomales Bay SP	237	MRN	1950	2,434.35	8.22	19,353 O	0	0	0	47	2	5.35
MARIN DISTRICT TOTALS				14,275.93	149.26	65,553 O	138	10	47	214	10	125.79
MENDOCINO DISTRICT												
Mendocino District HQ Office												
Mendocino North Sector												
Caspar Headlands SB	161	MEN	1972	74.57	0.00	9,420 O	0	0	0	0	0	0.00
Caspar Headlands SNR	160	MEN	1972	2.70	0.00	2,400 O	0	0	0	0	0	8.00
Jug Handle SNR	154	MEN	1976	759.22	16.59	11,900 O	0	0	0	5	0	5.40
						6,000 L						
Mackerricher SP	146	MEN	1949	1,936.52	582.65	45,330 O	154	2	0	3	0	87.64
						2,950 R						
Mendocino Headlands SP	158	MEN	1972	7,709.48	0.00	20,600 O	0	0	0	0	0	11.00
						71,000 R						
Mendocino Woodlands SP	159	MEN	1977	720.00	0.00		0	0	100	0	0	5.00
Point Cabrillo Light Station	166	MEN	2002	300.43	83.00	11,970 O	0	0	1	3	0	4.98
Russian Gulch SP	141	MEN	1933	1,257.66	47.00	11,950 O	30	5	0	1	0	17.40
Van Damme SP	142	MEN	1932	2,317.22	20.00	9,550 O	85	1	0	1	0	11.80
						51,400 R						
Westport-Union Landing SB	150	MEN	1952	57.82	0.00	17,750 O	46	0	0	3	0	0.50
Mendocino South Sector												
Greenwood SB	165	MEN	1978	47.22	0.00	1,500 O	0	0	0	4	0	158.06
Hendy Woods SP	148	MEN	1958	816.26	0.00	17,508 R	94	0	4	6	0	136.00
Mailliard Redwoods SNR	149	MEN	1945	242.00	0.00		0	0	0	1	0	130.00
Manchester SP	147	MEN	1955	1,489.97	3,782.00	20,620 O	34	1	0	3	0	4.00
Montgomery Woods SNR	143	MEN	1947	2,582.80	0.00	1,300 R	0	0	0	0	0	11.10
Navarro River Redwoods SP	144	MEN	1996	726.52	0.00	1,650 O	38	0	0	8	0	11.95
						100,300 R						
Schooner Gulch SB	164	MEN	1983	53.62	0.00	800 O	0	0	0	0	0	1.00
MENDOCINO DISTRICT TOTALS				21,094.01	4,531.24	6,000 L	481	9	105	38	0	603.83
TOTALS						165,440 O						
						244,458 R						

UNITS AND PROPERTIES OF THE CALIFORNIA STATE PARK SYSTEM

Fiscal Year 2007/08

VISITOR ATTENDANCE				REVENUE				AUTHORIZED BASE BUDGET	AUTHORIZED STAFFING LEVELS				
Paid Day Use	Free Day Use	Camping	Total	User Fees	Concessions	Misc.	Total	Operating Costs (\$)	Revenue as % of Oper. Cost	Perm Full Time	Temp.		
								\$0	\$8,204,157	15.0			
								\$0		14.0			
14,051	46,810	0	60,861	\$21,080	\$0	\$0	\$21,080						
6,993	89,984	3,483	100,460	\$17,965	\$0	\$0	\$17,965						
								\$0		58.0			
429,829	70,550	124,819	625,198	\$2,061,652	\$17,469	\$503	\$2,079,624						
-	-	-	0	-	-	-	\$0						
-	-	-	0	-	-	-	\$0						
								\$0		5.0			
1,636	29,054	26,064	56,754	\$88,871	\$409,965	\$177	\$499,013						
452,509	236,398	154,366	843,273	\$2,189,569	\$427,434	\$680	\$2,617,683	\$8,204,157	31.9%	116.0	40.2		
Highlighed data modified per errata.													
								\$5,096,357		9.0			
								\$0		10.0			
160,856	14,684	5,603	181,143	\$486,488	\$252,303	\$0	\$738,791						
								\$8,261		32.0			
19,506	229,860	12,431	261,797	\$122,917	\$1,278	\$0	\$124,195						
-	-	-	0	-	-	-	\$0						
88,122	466,721	20,623	575,466	\$481,344	\$7,157	\$30	\$488,531						
9,051	8,073	0	17,124	\$11,404	\$0	\$0	\$11,404						
34,056	36,848	78,413	149,317	\$466,594	\$451	\$0	\$467,045						
47,060	63,890	64	111,014	\$71,994	\$0	\$0	\$71,994						
358,651	820,076	117,134	1,295,861	\$1,649,001	\$261,190	\$30	\$1,910,221	\$5,096,357	37.5%	51.0	14.4		
Highlighed data modified per errata.													
								\$5,122	\$34,303	\$1,212	\$40,637	\$3,645,711	11.0
								\$0		25.0			
0	44,992	0	44,992	-	-	-	\$0						
0	36,226	0	36,226	-	-	-	\$0						
0	136,261	0	136,261	-	-	-	\$0						
0	916,463	87,539	1,004,002	\$539,668	\$0	\$0	\$539,668						
0	1,121,973	0	1,121,973	-	-	-	\$0						
0	0	22,052	22,052	-	-	-	\$0						
0	36,005	0	36,005	-	-	-	\$0						
15,819	37,859	20,379	74,057	\$163,637	\$0	\$37	\$163,675						
6,024	132,490	50,334	188,848	\$331,382	\$0	\$106	\$331,488						
0	149,938	20,980	170,918	\$64,488	\$0	\$4	\$64,492						
								\$0					
0	83,174	0	83,174	-	-	-	\$0						
6,677	613	20,973	28,263	\$224,020	\$0	\$0	\$224,020						
0	6,802	0	6,802	-	-	-	\$0						
0	63,572	8,233	71,805	\$43,095	\$0	\$0	\$43,095						
0	33,176	0	33,176	-	-	-	\$0						
0	123,048	14,826	137,874	\$36,414	\$0	\$0	\$36,414						
0	45,127	0	45,127	-	-	-	\$0						
28,520	2,967,719	245,316	3,241,555	\$1,407,826	\$34,303	\$1,359	\$1,443,488	\$3,645,711	39.6%	36.0	12.1		
Highlighed data modified per errata.													

UNITS AND PROPERTIES OF THE CALIFORNIA STATE PARK SYSTEM

Fiscal Year 2007/08

DISTRICT / Sector / Park Unit	Unit No.	County	Year Aq.	ACREAGE		Waterfront Feet L = Lake O = Ocean R = River S = Submerged	PUBLIC USE FACILITIES					
				California State Parks Owned	Other		Individual Camp Sites	Group Camp Sites	Non- Camping Overnight Facilities	Individual Picnic Sites	Group Picnic Sites	Non- Motorized Trail Miles
MONTEREY DISTRICT												
Monterey District HQ Office												
Asilomar Sector												
Asilomar SB	436	MON	1951	106.97	0.00	11,250 O	0	0	313	0	1	1.50
Monterey SHP	455	MON	1916	8.27	1.31		0	0	0	0	0	0.00
Big Sur Sector												
Andrew Molera SP	491	MON	1968	4,766.08	0.00	15,510 O 18,000 R	24	0	0	5	0	24.00
John Little SNR	438	MON	1953	20.68	0.00	2,100 O	0	0	0	0	0	0.00
Julia Pfeiffer Burns SP	462	MON	1962	2,142.16	1,620.00	11,900 O	2	0	0	7	0	12.00
Pfeiffer Big Sur SP	448	MON	1933	1,346.78	44.16	32,500 R	173	2	61	36	3	12.00
Point Sur SHP	419	MON	1986	84.10	8.08	8,200 O	0	0	0	0	0	0.00
Gavilan Sector												
Fremont Peak SP	412	MON SBT	1934	53.96 105.07	2.72 0.00		25	1	0	4	1	10.50
Henry W. Coe SP	432	SCL STA	1959	60,524.40 27,197.91	1,441.35 100.50		102	19	0	3	2	206.45
Martial Cottle Project	229	SCL	2003	136.53	0.00		0	0	0	0	0	0.00
San Juan Bautista SHP	411	SBT	1933	6.12	0.00		0	0	0	4	0	0.10
Monterey Sector												
Carmel River SB	437	MON	1953	296.69	0.00	7,960 O 5,600 R	0	0	0	0	0	5.50
Fort Ord Dunes SP	476	MON	N/A	0.00	0.00		0	0	0	0	0	0.25
Garrapata SP	467	MON	1979	2,938.75	0.81	27,710 O	0	0	0	0	0	19.00
Hatton Canyon	435	MON	1979	130.00	0.00		0	0	0	0	0	0.00
Marina SB	479	MON	1977	170.71	0.00	5,900 O	0	0	0	4	0	0.75
Monterey SB	460	MON	1960	102.42	10.00	21,181 O	0	0	0	4	0	0.00
Moss Landing SB	454	MON	1972	60.35	0.00	4,730 O	0	0	0	0	0	0.00
Point Lobos Ranch	440	MON	1933	1,328.84	0.00		0	0	0	0	0	0.00
Point Lobos SNR	449	MON	1998	1,324.73	0.00	23,777 O	0	0	0	22	0	15.00
Salinas River SB	451	MON SCR	1960	259.24 22.60	0.00 0.00	15,624 O	0	0	0	0	0	0.00
Zmudowski SB	450	MON SCR	1950	155.51 0.00	20.72 17.99	10,650 O	0	0	0	0	0	0.00
MONTEREY DISTRICT TOTALS				103,288.87	3,267.64	166,492 O 56,100 R	326	22	374	89	7	307.05

UNITS AND PROPERTIES OF THE CALIFORNIA STATE PARK SYSTEM

Fiscal Year 2007/08

VISITOR ATTENDANCE				REVENUE				AUTHORIZED BASE BUDGET	AUTHORIZED STAFFING LEVELS						
Paid Day Use	Free Day Use	Camping	Total	User Fees	Concessions	Misc.	Total	Operating Costs (\$)	Revenue as % of Oper. Cost	Perm Full Time	Temp.				
								MONTEREY DISTRICT							
				\$590	\$32,819	\$200	\$33,609	\$9,934,311		21.0					
								\$0		6.0					
0	604,199	132,341	736,540	\$0	\$1,930,102	\$0	\$1,930,102	Attendance data for Asilomar Dunes NP located within Asilomar SB							
0	276,865	0	276,865	(\$450)	\$0	\$0	(\$450)								
								\$0		20.0					
31,743	10,622	14,752	57,117	\$120,391	\$14,689	\$0	\$135,080	Monterey Sector data includes revenue and staffing from the Multi-Agency Facility							
0	0	0	0	-	-	-	\$0								
54,510	20,196	1,917	76,623	\$158,239	\$0	\$0	\$158,239								
100,446	141,691	251,911	494,048	\$1,450,440	\$685,225	\$0	\$2,135,666								
4,617	478	0	5,095	\$3,063	\$0	\$0	\$3,063								
												\$0		19.0	
6,081	3,783	7,137	17,001	\$36,111	\$0	\$0	\$36,111								
16,885	10,262	10,013	37,160	\$74,090	\$0	\$0	\$74,090								
-	-	-	0	-	-	-	\$0								
30,831	84,168	0	114,999	\$21,398	\$0	\$0	\$21,398								
								\$125	\$4,522	\$125	\$4,772	30.0			
0	114,748	0	114,748	-	-	-	\$0	Monterey Sector data includes revenue and staffing from the Multi-Agency Facility							
-	-	-	0	-	-	-	\$0								
0	143,580	0	143,580	-	-	-	\$0								
-	-	-	0	-	-	-	\$0								
0	520,860	0	520,860	-	-	-	\$0								
0	573,833	0	573,833	-	-	-	\$0								
0	208,852	0	208,852	-	-	-	\$0								
0	0	0	0	-	-	-	\$0								
239,954	94,238	0	334,192	\$601,216	\$79,684	\$0	\$680,901								
0	262,980	0	262,980	-	-	-	\$0								
0	39,636	0	39,636	-	-	-	\$0								
485,067	3,110,991	418,071	4,014,129	\$2,465,214	\$2,747,043	\$325	\$5,212,582	\$9,934,311	52.5%	96.0	21.7				

Highlighed data modified per errata.

UNITS AND PROPERTIES OF THE CALIFORNIA STATE PARK SYSTEM

Fiscal Year 2007/08

DISTRICT / Sector / Park Unit	Unit No.	County	Year Aq.	ACREAGE		Waterfront Feet L = Lake O = Ocean R = River S = Submerged	PUBLIC USE FACILITIES						
				California State Parks Owned	Other		Individual Camp Sites	Group Camp Sites	Non- Camping Overnight Facilities	Individual Picnic Sites	Group Picnic Sites	Non- Motorized Trail Miles	
NORTH COAST REDWOODS DISTRICT													
North Coast Redwoods District HQ Office													
Eel River Sector													
Admiral Wiliam Standley SRA	118	MEN	1944	45.22	0.00	3,200 R	0	0	0	0	0	0	0.00
Benbow Lake SRA	123	HUM	1958	1,142.47	0.00	17,500 L 18,050 R	78	0	0	10	4	4.13	
Fort Humboldt SHP	120	HUM	1955	17.99	0.00		0	0	0	0	0	1.75	
Grizzly Creek Redwoods SP	110	HUM	1943	429.95	0.00	19,700 R	43	1	0	24	1	3.62	
Humboldt Redwoods SP	119	HUM	1921	51,571.91	18.22	294,994 R	257	25	0	7	3	66.90	
John B. Dewitt Redwoods SNR	137	HUM	1929	1,164.30	0.00	14,225 R	0	0	0	0	0	4.00	
Reynolds WC	131	MEN	1966	65.80	0.00	5,720 R	0	0	0	0	0	0.00	
Richardson Grove SP	116	HUM	1922	1,771.74	0.00	15,300 R	169	1	0	15	1	1.96	
Sinkyone Wilderness SP	133	HUM MEN	1975	140.00 7,666.30	0.00 130.99	36,744 O 15,100 R	51	2	1	4	0	21.49	
Smithe Redwoods SNR	130	MEN	1963	689.01	0.00	6,640 R	0	0	0	0	0	2.00	
Standish-Hickey SRA	117	MEN	1921	1,020.83	0.00	28,650 R	163	0	0	5	0	7.31	
Redwood Coast Sector													
Azalea SNR	109	HUM	1943	30.35	0.00		0	0	0	2	0	1.33	
Del Norte Coast Redwoods SP	103	DN	1925	31,261.12	0.00	38,280 O	146	0	0	0	0	21.25	
Harry A. Merlo SRA	136	HUM	1982	955.00	0.00	18,700 L	0	0	0	0	0	0.00	
Humboldt Lagoons SP	105	HUM	1931	2,217.13	0.00	55,296 L 36,700 O	12	0	0	4	0	3.38	
Jedediah Smith Redwoods SP	102	DN	1929	10,447.38	0.00	46,890 R	111	1	0	1	0	20.39	
Little River SB	108	HUM	1931	110.65	0.00	3,960 O 4,320 R	0	0	0	0	0	3.00	
Patrick's Point SP	106	HUM	1930	652.24	0.00	21,850 O	130	2	0	32	3	9.56	
Pelican SB	101	DN	1947	5.15	0.00	975 O	0	0	0	0	0	5.90	
Prairie Creek Redwoods SP	104	DN HUM	1923	228.37 13,832.65	0.00 126.34	32,640 O	107	0	0	26	0	68.31	
Tolowa Dunes SP	134	DN	1983	4,398.82	0.00	600 L 13,700 O	6	1	0	0	0	28.27	
Trinidad SB	107	HUM	1937	158.70	0.00	8,360 O	0	0	0	10	0	2.00	
NORTH COAST REDWOODS DISTRICT TOTALS				130,023.08	275.55	92,096 L 193,209 O 472,789 R	1,273	33	1	140	12	276.55	
NORTHERN BUTTES DISTRICT													
Northern Buttes District HQ Office													
Cascade Sector													
Ahjumawi Lava Springs SP	190	SHA	1983	5,930.00	485.19	18,300 L 17,000 R	9	0	0	1	0	75.00	
Castle Crags SP	124	SHA	1934	3,904.66	0.00	16,250 R	83	0	0	10	0	24.00	
McArthur-Burney Falls Memorial SP	125	SHA	1920	611.09	299.01	9,000 L 16,700 R	119	0	22	45	0	6.75	
Shasta SHP	126	SHA	1937	24.61	0.00		0	0	0	1	1	1.50	
Weaverville Joss House SHP	127	TRI	1956	2.79	0.00		0	0	0	0	0	1.50	
Clear Lake Sector													
Anderson Marsh SHP	701	LAK	1982	1,298.41	1.50	12,486 L	0	0	0	1	0	0.50	
Clear Lake SP	218	LAK	1949	590.00	0.00	5,200 L	185	2	0	20	1	5.00	
Lake Oroville Sector													
Clay Pit SVRA	155	BUT	1981	0.00	220.14		0	0	0	2	0	0.00	
Lake Oroville SRA	151	BUT	1967	902.48	28,544.39	934,560 L 34,400 R	1,741	24	0	280	4	65.00	
Valley Sector													
Bidwell Mansion SHP	139	BUT	1964	5.21	0.00		0	0	0	1	0	2.60	
Bidwell-Sacramento River SP	163	BUT GLE	1979	323.77 24.92	0.00 0.00	48,561 R	0	0	0	26	0	3.00	
Colusa-Sacramento River SRA	140	COL GLE	1955	301.50 37.00	0.00 0.00	11,600 R	14	1	0	8	0	0.25	
(Sutter Buttes) SP	132	BUT	2003	1,784.50	0.00		0	0	0	2	0	0.50	
William B. Ide Adobe	128	TEH	1951	3.93	0.00	1,753 R	0	0	0	9	2	0.13	
Woodson Bridge SRA	129	TEH	1959	323.47	0.00	18,500 R	41	1	0	4	0	2.50	
NORTHERN BUTTES DISTRICT TOTALS				16,068.34	29,550.23	979,546 L 164,764 R	2,192	28	22	410	8	188.23	

UNITS AND PROPERTIES OF THE CALIFORNIA STATE PARK SYSTEM

Fiscal Year 2007/08

VISITOR ATTENDANCE				REVENUE				AUTHORIZED BASE BUDGET	AUTHORIZED STAFFING LEVELS		
Paid Day Use	Free Day Use	Camping	Total	User Fees	Concessions	Misc.	Total	Operating Costs (\$)	Revenue as % of Oper. Cost	Perm Full Time	Temp.
								NORTH COAST REDWOODS DISTRICT			
				\$456	\$0	\$1,130	\$1,586	\$8,145,589		21.0	
								\$0		28.0	
0	2,068	0	2,068	-	-	-	\$0				
10,807	21,727	7,724	40,258	\$88,814	\$1,940	\$0	\$90,754				
0	44,589	0	44,589	-	-	-	\$0				
2,450	18,280	7,477	28,207	\$56,862	\$64	\$0	\$56,926				
1,823	366,671	52,842	421,336	\$459,865	\$976	\$0	\$460,841				
0	3,406	0	3,406	-	-	-	\$0				
0	0	0	0	-	-	-	\$0				
5,216	29,111	28,075	62,402	\$230,683	\$4,318	\$157	\$235,158				
5,538	794	5,259	11,591	\$31,323	\$0	\$0	\$31,323				
0	8,921	0	8,921	-	-	-	\$0				
2,054	2,067	17,682	21,803	\$134,726	\$393	\$0	\$135,120				
0	7,336	0	7,336	(\$50)	\$7,122	\$1	\$7,073			22.0	
81	77,923	37,192	115,196	\$238,895	\$0	\$918	\$239,813				
0	56,455	0	56,455	-	-	-	\$0				
0	149,381	0	149,381	\$4,099	\$0	\$0	\$4,099				
12,889	80,187	40,540	133,616	\$334,288	\$0	\$0	\$334,288				
0	13,342	0	13,342	-	-	-	\$0				
45,003	26,860	72,455	144,318	\$535,569	\$0	\$0	\$535,569				
0	30,257	0	30,257	-	-	-	\$0				
35,613	147,713	47,897	231,223	\$413,746	\$0	\$0	\$413,746				
0	25,807	0	25,807	-	-	-	\$0				
0	44,964	0	44,964	-	-	-	\$0				
121,474	1,157,859	317,143	1,596,476	\$2,529,276	\$14,814	\$2,206	\$2,546,296	\$8,145,589	31.3%	71.0	23.8

Highlighted data modified per errata.

								NORTHERN BUTTES DISTRICT			
				\$28,907	\$919	\$5,333	\$35,159	\$7,499,914		13.0	
								\$0		15.0	
0	3,583	1,554	5,137	\$391	\$0	\$0	\$391				
15,934	32,547	17,332	65,813	\$135,109	\$1,671	\$120	\$136,901				
97,089	24,149	61,536	182,774	\$463,239	\$60,716	\$0	\$523,955				
6,100	24,255	0	30,355	\$10,789	\$4,567	\$0	\$15,355				
3,046	6,839	0	9,885	\$5,180	\$0	\$0	\$5,180				
								\$0		10.0	
7,999	15,325	0	23,324	\$2,431	\$0	\$0	\$2,431				
22,942	13,642	54,566	91,150	\$369,346	\$4,271	\$0	\$373,616				
								\$0		27.0	
1,653	30,972	0	32,625	-	-	-	\$0				
267,963	437,884	50,277	756,124	\$855,313	\$406,096	\$5,322	\$1,266,731				
								\$0		11.0	
10,965	24,449	0	35,414	\$55,353	\$0	\$0	\$55,353				
23,409	55,709	11	79,129	\$106,456	\$0	\$116	\$106,572				
14,667	0	6,506	21,173	\$54,272	\$0	\$0	\$54,272				
-	-	-	0	-	-	-	\$0				
1,263	23,251	0	24,514	\$2,485	\$0	\$0	\$2,485				
1,761	19,741	7,534	29,036	\$41,946	\$0	\$0	\$41,946				
474,791	712,346	199,316	1,386,453	\$2,131,216	\$478,239	\$10,891	\$2,620,347	\$7,499,914	34.9%	76.0	26.4

Revenue data for the Lake Oroville Sector office includes the Lake Oroville Visitor Center.

Waterfront footage for Colusa-Sacramento River SRA includes data from Butte City Project.

Highlighted data modified per errata.

UNITS AND PROPERTIES OF THE CALIFORNIA STATE PARK SYSTEM

Fiscal Year 2007/08

DISTRICT / Sector / Park Unit	Unit No.	County	Year Aq.	ACREAGE		Waterfront Feet L = Lake O = Ocean R = River S = Submerged	PUBLIC USE FACILITIES					
				California State Parks Owned	Other		Individual Camp Sites	Group Camp Sites	Non- Camping Overnight Facilities	Individual Picnic Sites	Group Picnic Sites	Non- Motorized Trail Miles
ORANGE COAST DISTRICT												
Orange Coast District HQ Office												
Crystal Cove Sector												
Corona del Mar SB	532	ORA	1947	29.57	0.00	2,700 O	0	0	0	4	1	0.95
Crystal Cove SP	594	ORA	1979	2,786.46	1,150.00	16,800 O	32	0	13	6	1	34.25
Orange Coast North Sector												
Bolsa Chica SB	534	ORA	1931	169.16	0.25	27,844 O	59	0	0	0	5	0.00
Huntington SB	564	ORA	1931	121.13	0.00	10,880 O	0	0	0	6	0	0.00
Orange Coast South Sector												
Doheny SB	610	ORA	1931	62.34	192.00	6,567 O	121	1	0	134	17	2.00
San Clemente SB	611	ORA	1931	117.25	0.07	5,970 O	161	1	0	15	2	1.60
San Onofre SB	662	SD	1971	0.00	2,106.65	24,288 O	334	1	0	4	0	7.50
ORANGE COAST DISTRICT TOTALS				3,285.91	3,448.97	95,049 O	707	3	13	169	26	46.30
RUSSIAN RIVER DISTRICT												
Russian River District HQ Office												
Russian River Sector												
Armstrong Redwoods SNR	208	SON	1934	752.00	0.00		0	0	0	78	1	6.75
Austin Creek SRA	245	SON	1964	5,927.48	0.00		3	0	0	1	0	17.20
Fort Ross SHP	207	SON	1909	3,303.06	90.00	23,480 O	21	0	0	26	0	3.90
Kruse Rhododendron SNR	206	SON	1934	317.00	0.00		0	0	0	0	0	4.10
Salt Point SP	248	SON	1968	4,744.93	940.00	42,362 O	139	1	0	22	0	16.12
Sonoma Coast SP	209	SON	1934	9,044.39	973.64	100,792 O 26,631 R	160	0	0	65	0	26.75
RUSSIAN RIVER DISTRICT TOTALS				24,088.86	2,003.64	166,634 O 26,631 R	323	1	0	192	1	74.82
SAN DIEGO COAST DISTRICT												
San Diego Coast District HQ Office												
San Diego Historic Sector												
Old Town San Diego SHP	667	SD	1972	29.00	0.08		0	0	0	0	0	0.00
San Pasqual Battlefield SHP	615	SD	1918	3.68	65.49		0	0	0	2	0	3.37
San Diego North Sector												
Cardiff SB	621	SD	1949	26.86	480.26	6,300 O	0	0	0	6	0	1.00
Carlsbad SB	612	SD	1933	34.13	10.00	7,119 O	0	0	0	4	0	0.25
Leucadia SB	634	SD	1949	10.60	0.00	5,380 O	0	0	0	0	0	0.00
Moonlight SB	638	SD	1949	12.73	0.00	1,555 O	0	0	0	12	0	68.00
San Elijo SB	654	SD	1952	42.62	545.00	7,100 O	172	0	0	16	0	0.00
South Carlsbad SB	652	SD	1949	118.40	0.00	17,875 O	222	0	0	0	0	0.00
Torrey Pines SB	631	SD	1952	61.36	0.00	8,841 O	0	0	0	0	0	8.50
Torrey Pines SNR	630	SD	1952	1,446.20	15.21		0	0	0	0	0	11.70
San Diego South Sector												
Border Field SP	669	SD	1967	814.56	495.71	6,040 O	0	2	0	20	0	9.25
Silver Strand SB	614	SD	1918	3,708.72	40.00	23,600 O	0	0	0	80	5	1.60
SAN DIEGO COAST DISTRICT TOTALS				6,308.86	1,651.75	83,810 O	394	2	0	140	5	103.67
SAN LUIS OBISPO COAST DISTRICT												
San Luis Obispo District HQ Office												
Coastal Sector												
Cayucos SB	452	SLO	1940	15.63	0.00	1,980 O	0	0	0	0	0	0.00
Estero Bay Project	749	SLO	2000	1,101.60	0.00	33,300 O	0	0	0	0	0	4.00
Limekiln SP	461	MON	1994	711.15	0.00	4,900 O	31	0	0	0	0	5.20
Los Osos Oaks SNR	746	SLO	1972	85.10	0.00		0	0	0	0	0	1.20
Montaña De Oro SP	441	SLO	1934	8,355.67	1.00	59,360 O	49	6	0	1	0	52.20
Morro Bay SP	443	SLO	1934	2,192.93	592.46	13,715 O	38	2	0	0	4	16.70
Morro Strand SB	442	SLO	1932	183.01	0.00	19,460 O	76	0	0	0	0	0.00
San Simeon SP	487	SLO	1932	1,687.55	613.00	112,970 O	168	0	0	20	0	6.50
William Randolph Hearst Memorial SB	486	SLO	1972	8.14	0.00	773 O	0	0	0	25	0	0.00
Museum Sector												
Hearst San Simeon SHM	494	SLO	1958	161.07	47.50		0	0	0	0	0	0.00
SAN LUIS OBISPO COAST DISTRICT TOTALS				14,501.85	1,253.96	246,458 O	362	8	0	46	4	85.80

UNITS AND PROPERTIES OF THE CALIFORNIA STATE PARK SYSTEM

Fiscal Year 2007/08

VISITOR ATTENDANCE				REVENUE				AUTHORIZED BASE BUDGET	AUTHORIZED STAFFING LEVELS		
Paid Day Use	Free Day Use	Camping	Total	User Fees	Concessions	Misc.	Total	Operating Costs (\$)	Revenue as % of Oper. Cost	Perm Full Time	Temp.
ORANGE COAST DISTRICT											
				\$22,436	\$0	\$40	\$22,476	\$13,538,194		22.0	
								\$0		16.0	
-	-	-	0	-	-	-	\$0	Crystal Cove Sector referred to as the Orange Coast Central Sector in staffing report.			
564,190	170,618	0	734,808	\$1,119,559	\$157,726	\$3	\$1,277,288				
				\$1,650	\$0	\$0	\$1,650		31.0		
1,357,805	1,542,965	80,102	2,980,872	\$3,490,116	\$30,369	\$154	\$3,520,639				
1,226,973	1,498,837	0	2,725,810	\$3,068,763	\$37,802	\$50	\$3,106,614				
				(\$722)	\$0	\$0	(\$722)		43.0		
639,253	842,236	134,165	1,615,654	\$2,007,722	\$70,042	\$0	\$2,077,764				
55,518	378,958	160,217	594,693	\$1,575,882	\$1,000	\$16	\$1,576,898				
1,134,027	1,401,180	218,750	2,753,957	\$2,991,333	\$0	\$29	\$2,991,361				
4,977,766	5,834,794	593,234	11,405,794	\$14,276,738	\$296,940	\$291	\$14,573,969	\$13,538,194	107.7%	112.0	97.2
Highlighed data modified per errata.											
RUSSIAN RIVER DISTRICT											
				\$5,047	\$3,655	\$1,501	\$10,203	\$4,134,686		10.0	
				\$3,354	\$165	\$0	\$3,519			33.0	
50,787	774,173	0	824,960	\$141,096	\$0	\$0	\$141,096				
25,912	290,524	7,751	324,187	-	-	-	\$0				
70,521	172,783	7,669	250,973	\$150,892	\$0	\$0	\$150,892				
0	20,371	0	20,371	-	-	-	\$0				
24,608	234,259	47,004	305,871	\$325,756	\$0	\$0	\$325,756				
34,070	2,133,186	90,345	2,257,601	\$757,248	\$0	\$0	\$757,248				
205,898	3,625,296	152,769	3,983,963	\$1,383,393	\$3,820	\$1,501	\$1,388,714	\$4,134,686	33.6%	43.0	17.7
SAN DIEGO COAST DISTRICT											
				\$245	\$5,000	\$170	\$5,415	\$9,985,332		22.0	
								\$0		13.0	
0	5,623,589	0	5,623,589	\$1,128	\$2,754,335	\$0	\$2,755,463				
-	2,149	-	2,149	-	-	-	\$0				
								\$0		38.0	
1,604,166	617,502	0	2,221,668	\$174,491	\$1,136	\$0	\$175,628				
0	1,733,834	0	1,733,834	-	-	-	\$0				
-	-	-	0	-	-	-	\$0				
-	-	-	0	-	-	-	\$0				
364,266	402,973	248,774	1,016,013	\$1,941,667	\$89,785	\$0	\$2,031,453				
376,731	919,658	264,046	1,560,435	\$2,257,136	\$77,902	\$80	\$2,335,118				
984,455	535,256	0	1,519,711	(\$157)	\$0	\$0	(\$157)				
272,494	154,542	0	427,036	\$1,221,439	\$1,020	\$0	\$1,222,459				
								\$0		14.0	
8,518	43,893	233	52,644	\$8,977	\$0	\$0	\$8,977				
209,164	143,839	98,127	451,130	\$1,186,428	\$8,636	\$1,259	\$1,196,322				
3,819,794	10,177,235	611,180	14,608,209	\$6,791,355	\$2,937,814	\$1,509	\$9,730,678	\$9,985,332	97.4%	87.0	57.1
Highlighed data modified per errata.											
SAN LUIS OBISPO COAST DISTRICT											
				(\$363)	\$675	\$242,936	\$243,248	\$18,440,728		34.0	
								\$0		45.0	
-	-	-	0	-	-	-	\$0				
0	0	0	0	-	-	-	\$0				
9,532	4,482	18,116	32,130	\$191,307	\$0	\$0	\$191,307				
0	22,496	0	22,496	-	-	-	\$0				
0	712,645	22,073	734,718	\$191,893	\$0	\$0	\$191,893				
15,911	1,437,470	91,553	1,544,934	\$829,043	\$66,959	\$0	\$896,001				
0	95,037	43,835	138,872	\$246,931	\$0	\$0	\$246,931				
0	713,447	103,593	817,040	\$707,221	\$0	\$2,433	\$709,654			1.0	
0	587,509	0	587,509	\$0	\$3,796	\$0	\$3,796				
								\$0		51.0	
652,698	20,751	0	673,449	\$7,761,716	\$1,121,062	\$141	\$8,882,919				
678,141	3,593,837	279,170	4,551,148	\$9,927,748	\$1,192,492	\$245,510	\$11,365,750	\$18,440,728	61.6%	131.0	103.1
Highlighed data modified per errata.											

UNITS AND PROPERTIES OF THE CALIFORNIA STATE PARK SYSTEM

Fiscal Year 2007/08

DISTRICT / Sector / Park Unit	Unit No.	County	Year Aq.	ACREAGE		Waterfront Feet L = Lake O = Ocean R = River S= Submerged	PUBLIC USE FACILITIES					
				California State Parks Owned	Other		Individual Camp Sites	Group Camp Sites	Non- Camping Overnight Facilities	Individual Picnic Sites	Group Picnic Sites	Non- Motorized Trail Miles
SANTA CRUZ DISTRICT												
Santa Cruz District HQ Office												
Pajaro Coast Sector												
Lighthouse Field SB	474	SCR	1978	37.60	0.00		0	0	0	0	0	0.00
Manresa SB	416	SCR	1948	137.87	0.00	11,800 O	64	0	0	7	0	0.00
Natural Bridges SB	407	SCR	1933	58.89	0.00	1,800 O	0	0	0	50	0	0.00
New Brighton SB	408	SCR	1933	157.33	0.06	3,900 O	105	3	0	14	1	0.70
Rancho San Andreas (Castro Adobe)	434	SCR	2002	1.00	0.00		0	0	0	0	0	3.45
Santa Cruz Mission SHP	433	SCR	1959	1.94	0.00		0	0	0	2	0	0.00
Seacliff SB	409	SCR	1931	86.69	0.00	9,483 O	26	0	0	131	1	9.00
Sunset SB	410	SCR	1931	299.84	2.27	18,600 O	91	1	0	3	2	0.00
The Forest of Nisene Marks SP	465	SCR	1963	10,222.70	0.00		6	0	0	17	0	19.70
Twin Lakes SB	422	SCR	1955	93.72	1.64	10,620 L 4,285 O	0	0	0	0	0	0.00
Wilder Ranch SP	456	SCR	1974	8,341.81	0.00	60,896 O	0	6	0	7	0	0.00
San Mateo Coast Sector												
Año Nuevo SP	222	SM	1985	2,896.00	0.00		0	0	0	0	0	0.75
Año Nuevo SNR	228	SM	1958	1,313.00	5.94	41,200 O	0	0	0	8	0	9.50
Bean Hollow SB	266	SM	1958	44.00	0.00	9,806 O	0	0	0	4	0	1.00
Burleigh H. Murray Ranch	285	SM	1979	1,325.45	0.00		0	0	0	1	0	2.00
Butano SP	423	SM	1956	4,727.50	0.40		45	0	0	10	0	15.77
Gray Whale Cove SB	270	SM	1966	3.10	0.00	390 O	0	0	0	0	0	0.00
Half Moon Bay SB	277	SM	1956	180.71	0.22	13,158 O	64	1	0	47	0	5.00
Montara SB	278	SM	1959	773.47	6.80	12,485 O	0	0	0	4	0	7.70
Pacifica SB	230	SM	1979	20.73	0.00	1,930 O	0	0	0	0	0	13.55
Pescadero SB	227	SM	1958	664.89	34.86	9,800 O	0	0	0	3	0	2.50
Pigeon Point Light Station SHP	281	SM	1981	63.54	12.00	9,050 O	0	0	3	0	0	9.35
Point Montara Light Station	282	SM	1982	0.00	6.00		0	0	3	0	0	0.25
Pomponio SB	226	SM	1960	420.64	0.00	11,750 O	0	0	0	10	0	0.00
San Gregorio SB	273	SM	1958	171.60	0.00	4,900 O	0	0	0	11	0	0.06
Thornton SB	275	SM	1955	58.00	0.00	3,160 O	0	0	0	0	0	0.00
Santa Cruz Mountains Sector												
Big Basin Redwoods SP	406	SCR	1906	17,128.76	0.00	6,100 O	183	10	38	105	0	85.50
		SM		904.11	0.00							
		SCL		103.95	0.00							
Castle Rock SP	404	SCR	1968	5,100.42	13.02	14,400 R	26	0	0	0	0	22.50
		SM		24.83	0.00							
Henry Cowell Redwoods SP	418	SCR	1953	4,623.06	0.00	44,553 R	111	0	0	45	2	38.00
Portola Redwoods SP	405	SM	1945	2,607.82	0.00		67	4	0	26	1	18.00
SANTA CRUZ DISTRICT				62,594.97	83.21	10,620 L	788	25	44	505	7	264.28
TOTALS						234,493 O						
						58,953 R						

UNITS AND PROPERTIES OF THE CALIFORNIA STATE PARK SYSTEM

Fiscal Year 2007/08

VISITOR ATTENDANCE				REVENUE				AUTHORIZED BASE BUDGET	AUTHORIZED STAFFING LEVELS		
Paid Day Use	Free Day Use	Camping	Total	User Fees	Concessions	Misc.	Total	Operating Costs (\$)	Revenue as % of Oper. Cost	Perm Full Time	Temp.
SANTA CRUZ DISTRICT											
				\$8,878	\$325,062	\$0	\$333,940	\$15,506,911		25.0	
				\$4,227	\$4,637	\$0	\$8,864			49.0	
			0	-	-	-	\$0				
78,289	52,674	47,425	178,388	\$287,066	\$0	\$0	\$287,066				
79,609	796,946	0	876,555	\$61,829	\$0	\$0	\$61,829				
945,556	651,206	132,740	1,729,502	\$932,084	\$0	\$0	\$932,084				
			0	-	-	-	\$0				
0	7,323	0	7,323	-	-	-	\$0				
1,100,702	1,381,737	63,344	2,545,783	\$711,135	\$975	\$0	\$712,110				
89,755	37,006	101,928	228,689	\$489,802	\$0	\$0	\$489,802				
26,767	33,125	163	60,055	\$20,307	\$0	\$0	\$20,307				
0	496,556	0	496,556	-	-	-	\$0				
27,269	427,422	14	454,705	\$28,876	\$200	\$0	\$29,076				
							\$0			19.0	
333	9,128	0	9,461	-	-	-	\$0				
59,454	94,682	0	154,136	\$165,096	\$0	\$0	\$165,096				
0	286,283	0	286,283	-	-	-	\$0				
0	19,036	0	19,036	-	-	-	\$0				
7,358	59,550	15,715	82,623	\$165,223	\$0	\$0	\$165,223				
0	36,735	0	36,735	-	-	-	\$0				
104,583	732,178	54,464	891,225	\$760,346	\$0	\$0	\$760,346				
0	78,229	0	78,229	-	-	-	\$0				
-	-	-	0	-	-	-	\$0				
4,675	390,830	0	395,505	\$13,576	\$0	\$0	\$13,576				
-	-	-	0	-	-	-	\$0				
-	-	-	0	-	-	-	\$0				
11,827	183,959	0	195,786	\$25,903	\$0	\$0	\$25,903				
58,068	384,425	0	442,493	\$129,987	\$0	\$0	\$129,987				
0	0	0	0	-	-	-	\$0				
				(\$336)	\$45,718	\$0	\$45,382			45.0	
111,794	667,109	108,764	887,667	\$685,876	\$8,376	\$0	\$694,252				
9,327	67,616	2,303	79,246	\$39,826	\$0	\$0	\$39,826				
87,189	529,830	47,180	664,199	\$467,941	\$0	\$3,379	\$471,320				
13,159	710	28,861	42,730	\$184,997	\$160	\$0	\$185,157				
2,815,714	7,424,295	602,901	10,842,910	\$5,182,638	\$385,129	\$3,379	\$5,571,146	\$15,506,911	35.9%	138.0	39.8

Highlighted data modified per errata.

UNITS AND PROPERTIES OF THE CALIFORNIA STATE PARK SYSTEM

Fiscal Year 2007/08

DISTRICT / Sector / Park Unit	Unit No.	County	Year Aq.	ACREAGE		Waterfront Feet L = Lake O = Ocean R = River S = Submerged	PUBLIC USE FACILITIES					
				California State Parks Owned	Other		Individual Camp Sites	Group Camp Sites	Non- Camping Overnight Facilities	Individual Picnic Sites	Group Picnic Sites	Non- Motorized Trail Miles
SIERRA DISTRICT												
Sierra District HQ Office												
Alpine Mono Sector												
Bodie SHP	324	MNO	1962	1,014.11	0.00		0	0	0	8	0	6.00
Grover Hot Springs SP	322	ALP	1959	553.42	0.00		0	0	0	8	0	6.00
Mono Lake Tufa SNR	366	MNO	1988	0.00	55,300.00	245,995 L	0	0	0	3	0	1.00
Lake Tahoe Sector												
Burton Creek SP	348	PLA	1976	1,890.29	0.00		0	0	0	0	0	9.51
D.L. Bliss SP	303	ELD	1929	888.93	1,260.00	19,380 L	154	1	0	10	0	25.50
Donner Memorial SP	301	NEV PLA	1928	415.74 2,876.78	0.00	9,000 L 2,580 R	152	0	0	48	0	3.25
Ed Z'berg Sugar Pine Point SP	339	ELD	1965	2,324.46	0.00	7,700 L	121	10	0	32	1	10.50
Emerald Bay SP	313	ELD	1953	662.71	870.00	21,050 L	122	0	0	0	0	5.40
Kings Beach SRA	343	PLA	1974	7.74	0.00	879 L	0	0	0	26	0	2.00
Lake Valley SRA	382	ELD	1985	155.39	0.00	2,750 R	0	0	0	0	0	1.00
Tahoe SRA	302	PLA	1927	61.71	0.00	1,245 L 80 R	27	0	0	0	0	1.50
Ward Creek project	349	PLA	1978	173.00	0.00		0	0	0	0	0	0.00
Washoe Meadows SP	390	ELD	1985	627.73	0.00	3,750 R	0	0	0	0	0	1.50
Sierra Gold Sector												
Empire Mine SHP	383	NEV	1975	852.98	0.00		0	0	0	25	0	21.30
Malakoff Diggins SHP	356	NEV	1988	3,142.88	0.00	2,640 L	30	1	3	3	1	19.00
Plumas-Eureka SP	321	PLU	1959	4,424.30	0.00		67	1	0	12	0	9.50
South Yuba River SP	359	NEV	1979	3,534.19	5,186.18	2,100 L 145,960 R	0	0	0	2	0	12.00
SIERRA DISTRICT TOTALS				23,606.36	62,616.18	309,989 L 155,120 R	673	13	3	177	2	134.96
TEHACHAPI DISTRICT												
Tehachapi District HQ Office												
Mojave Sector												
Antelope Valley California Poppy Reserve (SNR)	560	LA	1976	1,781.23	0.00		0	0	0	6	0	7.40
Antelope Valley Indian Museum SHP	579	LA	1979	157.34	240.00		0	0	0	17	0	1.00
Arthur B. Ripley Desert Woodland SP	595	LA	1993	566.08	0.00		0	0	0	1	0	0.50
Colonel Allensworth SHP	341	TUL	1973	1,023.36	2,691.83		15	0	0	10	0	0.00
Fort Tejon SHP	351	KER	1940	647.38	0.00		0	1	0	5	0	0.25
Red Rock Canyon SP	577	KER	1970	19,147.36	6,177.29		51	1	0	9	0	1.70
Saddleback Butte SP	543	LA	1957	2,875.07	78.92		50	1	0	30	0	12.00
Tomo-Kahni SHP	368	KER	1993	560.00	0.00		0	0	0	0	0	1.38
Tule Elk SNR	350	KER	1932	983.60	0.00		0	0	0	8	0	0.00
Silverwood Sector												
Providence Mountains SRA	538	SBD	1956	5,890.46	0.00		6	0	0	2	0	3.80
Silverwood Lake SRA	592	SBD	1978	2,201.00	0.00	68,640 L	142	7	0	603	0	21.00
TEHACHAPI DISTRICT TOTALS				35,832.88	9,188.04	68,640 L	264	10	0	691	0	49.03

UNITS AND PROPERTIES OF THE CALIFORNIA STATE PARK SYSTEM

Fiscal Year 2007/08

VISITOR ATTENDANCE				REVENUE				AUTHORIZED BASE BUDGET	AUTHORIZED STAFFING LEVELS				
Paid Day Use	Free Day Use	Camping	Total	User Fees	Concessions	Misc.	Total	Operating Costs (\$)	Revenue as % of Oper. Cost	Perm Full Time	Temp.		
								SIERRA DISTRICT					
								\$954	\$462	\$41	\$1,457	\$8,316,371	24.0
								\$0					6.0
98,817	21,240	0	120,057	\$236,477	\$597	\$0	\$237,074						
44,841	182	32,954	77,977	\$358,006	\$75	\$0	\$358,080				8.0		
0	222,391	0	222,391	\$0	\$595	\$0	\$595						
								\$6,676	\$112	\$0	\$6,788		14.0
0	0	0	0	\$0	\$13,500	\$0	\$13,500						
46,133	6,231	42,101	94,465	\$368,840	\$0	\$0	\$368,840						
77,921	63,373	44,276	185,570	\$411,186	\$12,869	\$0	\$424,055				5.0		
22,966	7,867	38,876	69,709	\$425,783	\$5,045	\$0	\$430,828						
39,756	102,541	25,118	167,415	\$266,636	\$2,087	\$0	\$268,723						
-	-	-	0	-	-	-	\$0						
0	0	0	0	\$0	\$502,158	\$0	\$502,158						
0	0	8,229	8,229	\$70,958	\$0	\$0	\$70,958						
0	0	0	0	-	-	-	\$0						
0	0	0	0	-	-	-	\$0						
								\$0				21.0	
40,113	67,997	0	108,110	\$104,519	\$852	\$182	\$105,553						
5,036	2,051	7,374	14,461	\$49,559	\$0	\$0	\$49,559						
0	75,894	24,876	100,770	\$119,773	\$471	\$0	\$120,244				2.0		
0	215,472	0	215,472	\$225	\$0	\$0	\$225						
375,583	785,239	223,804	1,384,626	\$2,419,591	\$538,824	\$222	\$2,958,638	\$8,316,371	35.6%	80.0	22.6		
Highlighted data modified per errata.													
								TEHACHAPI DISTRICT					
								\$4,661,191				6.0	
0	2,618	0	2,618	\$98	\$0	\$0	\$98				9.0		
72,299	9,643	0	81,942	\$114,104	\$0	\$0	\$114,104						
0	0	0	0	-	-	-	\$0						
0	1,227	0	1,227	-	-	-	\$0						
5,868	2,373	2,090	10,331	\$13,176	\$0	\$0	\$13,176						
7,243	27,406	334	34,983	\$14,426	\$0	\$94	\$14,520				13.0		
5,895	17,110	11,765	34,770	\$63,790	\$0	\$0	\$63,790						
1,552	1,536	2,058	5,146	\$9,973	\$0	\$0	\$9,973						
192	365	0	557	\$810	\$0	\$0	\$810						
1,190	5,417	0	6,607	\$1,604	\$0	\$363	\$1,967						
								\$0				24.0	
8,760	5,143	2,120	16,023	\$40,832	\$857	\$0	\$41,689						
331,435	8,367	70,037	409,839	\$1,270,998	\$33,297	\$598	\$1,304,892						
434,434	81,205	88,404	604,043	\$1,529,713	\$34,154	\$1,055	\$1,564,921	\$4,661,191	33.6%	52.0			
Highlighted data modified per errata.													

UNITS AND PROPERTIES OF THE CALIFORNIA STATE PARK SYSTEM

Fiscal Year 2007/08

DISTRICT / Sector / Park Unit	Unit No.	County	Year Aq.	ACREAGE		Waterfront Feet L = Lake O = Ocean R = River S = Submerged	PUBLIC USE FACILITIES									
				California State Parks Owned	Other		Individual Camp Sites	Group Camp Sites	Non- Camping Overnight Facilities	Individual Picnic Sites	Group Picnic Sites	Non- Motorized Trail Miles				
NON-OHMVR DISTRICTS (20)						218,943 L										
ANGELES DISTRICT TOTALS				39,334.07	4,394.39	86,229 O 3,376 R 1,785,960 S	403	10	0	182	18	104.45				
CAPITAL DISTRICT TOTALS				324.41	0.91	0 L 0 O 1,065 R 0 S	0	0	0	27	2	26.85				
CENTRAL VALLEY DISTRICT TOTALS				17,314.85	36,777.08	754,950 L 0 O 81,040 R 0 S	608	17	30	574	14	142.80				
CHANNEL COAST DISTRICT TOTALS				8,243.58	761.56	129,795 O 1,550 R 0 S	726	47	0	193	46	80.60				
COLORADO DESERT DISTRICT TOTALS				620,231.02	19,846.78	95,280 L 0 O 44,005 R 0 S	1,260	31	6	124	3	657.55				
DIABLO VISTA DISTRICT TOTALS				43,501.44	4,151.65	103,000 L 45,615 O 824 R 34,450 S 707,700 L	313	16	0	611	27	538.74				
GOLD FIELDS DISTRICT TOTALS				8,624.73	59,337.45	0 O 421,090 R 0 S	285	9	0	512	9	87.81				
INLAND EMPIRE DISTRICT TOTALS				31,572.27	5,245.19	52,800 L 0 O 0 R 0 S	534	21	0	1,621	6	333.25				
MARIN DISTRICT TOTALS				14,275.93	149.26	65,553 O 0 R 0 S	138	10	47	214	10	125.79				
MENDOCINO DISTRICT TOTALS				21,094.01	4,531.24	6,000 L 165,440 O 244,458 R 0 S	481	9	105	38	0	603.83				
MONTEREY DISTRICT TOTALS				103,288.87	3,267.64	166,492 O 56,100 R 0 S	326	22	374	89	7	307.05				
NORTH COAST REDWOODS DISTRICT TOTALS				130,023.08	275.55	92,096 L 193,209 O 472,789 R 0 S	1,273	33	1	140	12	276.55				
NORTHERN BUTTES DISTRICT TOTALS				16,068.34	29,550.23	979,546 L 0 O 164,764 R 0 S	2,192	28	22	410	8	188.23				
ORANGE COAST DISTRICT TOTALS				3,285.91	3,448.97	95,049 O 0 R 0 S	707	3	13	169	26	46.30				
RUSSIAN RIVER DISTRICT TOTALS				24,088.86	2,003.64	166,634 O 26,631 R 0 S	323	1	0	192	1	74.82				
SAN DIEGO COAST DISTRICT TOTALS				6,308.86	1,651.75	83,810 O 0 R 0 S	394	2	0	140	5	103.67				
SAN LUIS OBISPO COAST DISTRICT TOTALS				14,501.85	1,253.96	246,458 O 0 R 0 S	362	8	0	46	4	85.80				
SANTA CRUZ DISTRICT TOTALS				62,594.97	83.21	10,620 L 234,493 O 58,953 R 0 S	788	25	44	505	7	264.28				
SIERRA DISTRICT TOTALS				23,606.36	62,616.18	309,989 L 0 O 155,120 R 0 S	673	13	3	177	2	134.96				
TEHACHAPI DISTRICT TOTALS				35,832.88	9,188.04	68,640 L 0 O 0 R 0 S	264	10	0	691	0	49.03				
NON-OHMVR DISTRICT (20) TOTALS				1,224,116.29	248,534.68	3,330,924 L 1,678,777 O 1,731,765 R 1,820,410 S	12,050	315	645	6,655	207	4,232.35				

UNITS AND PROPERTIES OF THE CALIFORNIA STATE PARK SYSTEM

Fiscal Year 2007/08

VISITOR ATTENDANCE				REVENUE				AUTHORIZED BASE BUDGET	AUTHORIZED STAFFING LEVELS		
Paid Day Use	Free Day Use	Camping	Total	User Fees	Concessions	Misc.	Total	Operating Costs (\$)	Revenue as % of Oper. Cost	Perm Full Time	Temp.
NON-OHMVR DISTRICTS (20)											
707,583	1,329,957	361,976	2,399,516	\$3,501,387	\$199,611	\$206	\$3,701,204	\$9,898,652	37.4%	95.0	37.6
291,279	847,053	0	1,138,332	\$1,464,947	\$55,167	\$238	\$1,520,351	\$7,939,265	19.1%	95.4	32.6
851,730	783,777	167,436	1,802,943	\$2,483,175	\$301,760	\$4,823	\$2,789,758	\$8,794,550	31.7%	102.0	23.9
405,142	497,061	862,482	1,764,685	\$5,756,465	\$52,223	\$25	\$5,808,713	\$7,230,829	80.3%	69.0	39.9
110,872	1,033,709	270,794	1,415,375	\$1,069,355	\$26,106	\$4,214	\$1,099,675	\$6,512,723	16.9%	67.0	21.2
368,102	1,110,488	64,350	1,542,940	\$1,288,489	\$1,008,774	\$98	\$2,297,361	\$6,823,173	33.7%	77.0	35.2
1,220,397	717,400	86,461	2,024,258	\$2,646,031	\$220,552	\$2,690	\$2,869,273	\$7,957,294	36.1%	81.0	30.6
452,509	236,398	154,366	843,273	\$2,189,569	\$427,434	\$680	\$2,617,683	\$8,204,157	31.9%	116.0	40.2
358,651	820,076	117,134	1,295,861	\$1,649,001	\$261,190	\$30	\$1,910,221	\$5,096,357	37.5%	51.0	14.4
28,520	2,967,719	245,316	3,241,555	\$1,407,826	\$34,303	\$1,359	\$1,443,488	\$3,645,711	39.6%	36.0	12.1
485,067	3,110,991	418,071	4,014,129	\$2,465,214	\$2,747,043	\$325	\$5,212,582	\$9,934,311	52.5%	96.0	21.7
121,474	1,157,859	317,143	1,596,476	\$2,529,276	\$14,814	\$2,206	\$2,546,296	\$8,145,589	31.3%	71.0	23.8
474,791	712,346	199,316	1,386,453	\$2,131,216	\$478,239	\$10,891	\$2,620,347	\$7,499,914	34.9%	76.0	26.4
4,977,766	5,834,794	593,234	11,405,794	\$14,276,738	\$296,940	\$291	\$14,573,969	\$13,538,194	107.7%	112.0	97.2
205,898	3,625,296	152,769	3,983,963	\$1,383,393	\$3,820	\$1,501	\$1,388,714	\$4,134,686	33.6%	43.0	17.7
3,819,794	10,177,235	611,180	14,608,209	\$6,791,355	\$2,937,814	\$1,509	\$9,730,678	\$9,985,332	97.4%	87.0	57.1
678,141	3,593,837	279,170	4,551,148	\$9,927,748	\$1,192,492	\$245,510	\$11,365,750	\$18,440,728	61.6%	131.0	103.1
2,815,714	7,424,295	602,901	10,842,910	\$5,182,638	\$385,129	\$3,379	\$5,571,146	\$15,506,911	35.9%	138.0	39.8
375,583	785,239	223,804	1,384,626	\$2,419,591	\$538,824	\$222	\$2,958,638	\$8,316,371	35.6%	80.0	22.6
434,434	81,205	88,404	604,043	\$1,529,713	\$34,154	\$1,055	\$1,564,921	\$4,661,191	33.6%	52.0	0.0
19,183,447	46,846,735	5,816,307	71,846,489	\$72,093,125	\$11,216,388	\$281,251	\$83,590,764	\$172,265,938	48.5%	1,675.4	697.1

Highlighed data modified per errata.

UNITS AND PROPERTIES OF THE CALIFORNIA STATE PARK SYSTEM

Fiscal Year 2007/08

DISTRICT / Sector / Park Unit	Unit No.	County	Year Aq.	ACREAGE		Waterfront Feet L = Lake O = Ocean R = River S = Submerged	PUBLIC USE FACILITIES					
				California State Parks Owned	Other		Individual Camp Sites	Group Camp Sites	Non- Camping Overnight Facilities	Individual Picnic Sites	Group Picnic Sites	Non- Motorized Trail Miles
OHMVR DISTRICTS (5)												
OHMVR Division HQ Office												
HOLLISTER HILLS OHMVR DISTRICT												
Hollister Hills SVRA	244	SBT	1975	6,361.49	262.26	0	0	6	0	30	1	140.00
HOLLISTER HILLS DISTRICT				6,361.49	262.26		0	6	0	30	1	140.00
TOTALS												
HUNGRY VALLEY OHMVR DISTRICT												
Hungry Valley SVRA	521	LA VEN	1978	11,779.89 6,621.31	0.00 0.00		165	0	0	0	0	1.50
HUNGRY VALLEY DISTRICT				18,401.20	0.00		165	0	0	0	0	1.50
TOTALS												
OCEANO DUNES OHMVR DISTRICT												
Oceano Dunes SVRA	264	SLO	1974	2,409.59	275.55	14,832 O 200 S	1,000	0	0	0	0	1.00
Pismo SB	446	SLO	1935	1,412.07	0.00	10,803 L 32,420 O	185	0	0	0	0	3.00
OCEANO DUNES DISTRICT				3,821.66	275.55		1,185	0	0	0	0	4.00
TOTALS												
OCOTILLO WELLS OHMVR DISTRICT												
Heber Dunes SVRA	444	IMP	1998	341.50	0.00		8	0	0	15	0	0.00
Ocotillo Wells SVRA	439	IMP SD	1976	37,832.24 12,735.38	0.00 0.00		112	0	0	0	0	0.00
OCOTILLO WELLS DISTRICT				50,909.12	0.00		120	0	0	15	0	0.00
TOTALS												
TWIN CITIES OHMVR DISTRICT												
Carnegie SVRA	272	ALA SJ	1979	3,812.96 1,225.82	0.00 36.00		22	0	0	59	0	0.00
Prairie City SVRA	367	SAC	1990	1,714.56	1,071.23		0	0	0	52	0	0.00
TWIN CITIES DISTRICT				6,753.34	1,107.23		22	0	0	111	0	0.00
TOTALS												
OHMVR DISTRICTS (5)				86,246.81	1,645.04	10,803 L 47,252 O 200 S	1492	6	0	156	1	145.50
TOTALS												

UNITS AND PROPERTIES OF THE CALIFORNIA STATE PARK SYSTEM

Fiscal Year 2007/08

VISITOR ATTENDANCE				REVENUE				AUTHORIZED BASE BUDGET	AUTHORIZED STAFFING LEVELS		
Paid Day Use	Free Day Use	Camping	Total	User Fees	Concessions	Misc.	Total	Operating Costs (\$)	Revenue as % of Oper. Cost	Perm Full Time	Temp.
				\$378,841	\$0	\$24,192	\$403,033	\$26,949,872		27.0	
				\$0	\$0	\$551	\$551			18.0	
127,102	25,880	70,783	223,765	\$393,056	\$46,368	\$3,919	\$443,343				
127,102	25,880	70,783	223,765	\$393,056	\$46,368	\$4,470	\$443,894				
				-	-	\$1,816	\$1,816			14.0	
112,720	130,668	23,154	266,542	\$263,969	\$37,885	\$55	\$301,909				
112,720	130,668	23,154	266,542	\$263,969	\$37,885	\$1,871	\$303,725				
				\$17,422	\$0	\$231,873	\$249,295			36.0	
795,121	719,217	442,110	1,956,448	\$1,088,093	\$691,129	\$2,960	\$1,782,182				
0	457,523	165,986	623,509	\$1,035,847	\$0	\$0	\$1,035,847				
795,121	1,176,740	608,096	2,579,957	\$2,141,362	\$691,129	\$234,833	\$3,067,324				
				-	-	\$409	\$409			19.0	
0	25,665	0	25,665	-	-	-	\$0				
0	314,906	950,450	1,265,356	\$6,967	\$0	\$459	\$7,426				
0	340,571	950,450	1,291,021	\$6,967	\$0	\$868	\$7,835				
				-	-	\$328	\$328			18.0	
79,978	6,568	9,062	95,608	\$284,917	\$50,592	\$16	\$335,525			9.0	
164,244	11,559	0	175,803	\$244,166	\$63,495	\$8	\$307,669				
244,222	18,127	9,062	271,411	\$529,083	\$114,087	\$352	\$643,522				
1,279,165	1,691,986	1,661,545	4,632,696	\$3,713,278	\$889,469	\$266,586	\$4,869,333	\$26,949,872	18.1%	141.0	31.8

Highlighed data modified per errata.

UNITS AND PROPERTIES OF THE CALIFORNIA STATE PARK SYSTEM

Fiscal Year 2007/08

	ACREAGE			PUBLIC USE FACILITIES					
	California State Parks Owned (a)	Other (a)	Waterfront Feet	Individual Camp Sites	Group Camp Sites	Non-Camping Overnight Facilities	Individual Picnic Sites	Group Picnic Sites	Non-Motor. Trail Miles
CALIFORNIA STATE PARKS									
STATE PARK SYSTEM TOTALS	1,310,363.1	250,179.7	3,410,367 L 1,660,476 O 1,731,765 R 1,820,610 S	13,542	321	645	6,811	208	4,377.85
Minor System Properties	80.2	0.2	5000.0 O	-	-	-	-	-	-
CALIFORNIA STATE PARKS TOTALS	1,310,443.3	250,179.9	3,410,367 L 1,665,476 O 1,731,765 R 1,820,610 S	13,542	321	645	6,811	208	4,377.85

UNITS AND PROPERTIES OF THE CALIFORNIA STATE PARK SYSTEM

Fiscal Year 2007/08

VISITOR ATTENDANCE			REVENUE				Authorized Base Budget		Authorized Staffing Levels	
Day Use	Camping	Total	User Fees	Concessions	Misc	Total	Operating Costs (\$)	Revenue as % of Oper. Cost	Perm Full Time	Temp
69,001,333	7,477,852	76,479,185	\$75,806,403	\$12,105,857	\$547,838	\$88,460,098	\$199,215,810	44.40%	1,816.4	728.9
-	-	-	-	-	-	-	-	-	-	-
69,001,333	7,477,852	76,479,185	\$75,806,403	\$12,105,857	\$547,838	\$88,460,098	\$199,215,810	44.40%	1,816.4	728.9
Highlighted data modified per errata.										

CHAPTER 4 - BASIC STATISTICS – DEFINITION OF TERMS

This chapter provides definitions or characterizations of each of this report's data categories, along with how their information is created and processed within California State Parks. Where appropriate, background information on certain data categories is provided to allow the reader to know something of what is behind the data and to understand the strengths and weaknesses of the numbers that are available for use. These definitions appear below.

* * * * *

Park Name – With rare exception, classified units are named by the California State Park and Recreation Commission, based on recommendations made by the Director. Very few units have been named by the California Legislature. The unit's name usually reflects a geographic feature or an individual or group of people historically associated with the unit. Prior to their classification, newly acquired properties are given temporary names for working purposes. Information source: California State Park and Recreation Commission; Acquisition and Real Property Services Division, California State Parks.

Park Classification - With rare exception, units are classified by the California State Park and Recreation Commission, based on recommendations made by the Director. Very few units have been classified by the California Legislature. These recommendations are based on the options found in Public Resources Code Section 5019 *et seq.* Each unit is given a classification that best reflects the unit's primary values and the purposes for which the property was acquired and is to be managed. Information source: California State Park and Recreation Commission

Unit Number - The "unit number" is the last three digits of a unique six-digit number assigned by the Accounting Services Section to each of the classified units and major unclassified properties of the State Park System. Such six-digit numbers are also assigned to California State Parks' various other organizational components - divisions, sections, and offices. A major purpose of these numbers is to identify and track money, staff and other resources allocated to and used by these various activity centers. Information source: Accounting Services Section, California State Parks.

County - This shows the county or counties in which the unit or property is located. The abbreviations for the county names conform to the standard used throughout California state government. Information source: Acquisition and Real Property Services Division, California State Parks.

Acreage - This is the surface acreage of the lands and waters which constitute each classified unit and major unclassified property. This information is based on county assessor's maps, descriptions, and any notations regarding easements or

claims on these properties. The acreage of the lands in the California State Park System is also recorded, on a parcel-by-parcel basis, in the assessor's books of the counties where the lands are situated.

The addition or removal of acreage from the State Park System's database is a continuous process. In any instance, it is accomplished at the time that the appropriate records are received and processed by California State Parks. This may not coincide with the time of the recording of deeds, payment of funds, or movement of other paperwork. Information source: Acquisition and Real Property Services Division, California State Parks.

- California State Parks Owned – those lands which are owned in fee by California State Parks. Some of these lands, however, may be subject to easements and certain other restrictions.
- Other – those lands which are owned in fee by another government agency, non-profit organization or private entity, but which are operated as part of the State Park System through an agreement with California State Parks. The form of these agreements includes leases, permits, easements, operating agreements and memorandums of understanding.

Waterfront Feet - Water, in the form of lakes, streams and ocean shoreline are important park features, from both an environmental and recreational standpoint. Data on the presence and magnitude of this feature is measured in terms of its frontage, the edge it presents to or within the unit or property. The four types of waterfront feet are reported separately - for natural lakes and reservoirs ("L"), for rivers ("R"), for the shore of the Pacific Ocean and its major estuaries ("O") and for waterfront feet that are submerged ("S"). The data in this column is presented in actual footage. Information source: Acquisition and Real Property Services Division, California State Parks.

Public Use Facilities - The properties of the State Park System provide a wide range of public use facilities, including picnic sites, camp sites, overnight shelters, trails, boat launching ramps, restrooms, roads, parking areas, interpretive centers and campfire centers. The three most common general types of public use facilities are those used by visitors for overnight use, for picnicking and for moving about the park on trails, by means of foot, horse or bicycle.

Earlier statistical reports were inconsistent in their definitions of these three types of facilities. Such reports did not have data on certain subcategories of facilities; in the case of overnight use facilities, group camps were seldom reported and data on structural overnight facilities had never been collected. Commencing with the 2001/02 *Statistical Report*, data for public use facilities of those used by visitors for overnight use, for picnicking and for moving about the park on trails, by means of foot, horse or bicycle have been specifically included. To obtain the current and detailed data that was needed for this report, a special unit-by-unit

web survey was accomplished in the summer/fall of 2008, seeking information that was current as of June 30, 2008. The details of this survey are contained in Appendix B. Information source: Planning Division, California State Parks.

- Individual/Family Camp Sites - This category is the sum of eight survey subcategories. Each subcategory is briefly described here and fully described in Appendix B.
 1. Primitive/Undeveloped – each site accommodates up to eight people and two vehicles; tent space, stove, table and nearby piped water, chemical or vault toilet. Some of these amenities may not be available in every case.
 2. Developed (standard) – each site accommodates up to eight people and two vehicles; designated parking, tent or RV space, stove, table and nearby piped water, and restroom with flush toilets and hot water; may include showers and laundry sinks. This site can accommodate recreation vehicles that are under 30 feet in length.
 3. Developed (oversized) – each site accommodates up to eight people and two vehicles; designated parking, tent or RV space, stove, table and nearby piped water, and restroom with flush toilets and hot water; may include showers and laundry sinks. This site can accommodate recreation vehicles that are over 30 feet in length.
 4. RV Hookup – each site accommodates up eight people and two vehicles in a designated space and provides paved spur for RV, as well as hookups for electricity, water and sewage disposal.
 5. Environmental/Trail – a designated primitive site in a relatively undisturbed setting, accessible by foot path or trail.
 6. Hike/Bike – a designated area with tent space, table, fire rings or stove with water and toilet facilities nearby, accessible by foot path or trail.
 7. Floating Campsites – tent space, table, stove, and toilet facilities on a floating platform, accessible only by boat.
 8. Dock Berths, Offshore Mooring Buoys – a place to tie up a boat, which itself may serve for overnight use; some units with mooring buoys have an assigned campsite on land.
- Group Camp Sites – This category is the sum of two subcategories. Each subcategory is briefly described here and fully described in Appendix B.
 1. Tent or RV Use - primitive or developed – an area with space for many tents or RVs, providing many tables, stoves, water sources, and restrooms, designed to be used by a large group of people; often available by reservation only.
 2. Horse camps – primitive or developed – as above, but with added facilities needed for the management of horses.

- Non-Camping Overnight Facilities - This includes tent cabins, rustic cabins, shelters, yurts and bark houses, as well as lodges, motel facilities, hostel facilities, and modern cabins.
- Individual or Family Picnic Sites – These are small areas with tables, stoves or fire rings, with nearby parking, water and restrooms. These sites are sometimes used by groups but are intended mainly for individuals or families.
- Group Picnic Sites - These are large areas with a number of tables, stoves or fire rings, with nearby parking, water and restroom facilities, often used by reservation only.
- Non-Motorized Trails – This category is the sum of five subcategories. Each subcategory is briefly described here and fully described in Appendix B.
 1. Multiple Use Trails - these facilities are unpaved pathways or trails for use by all three types of users: pedestrian, horse and bicycle.
 2. Equestrian/Pedestrian - this category includes pathways or trails designated for equestrians and pedestrians thereby excluding bicycles.
 3. Bicycle/Pedestrian - this category includes pathways or trails designated for bicycles and pedestrians thereby excluding horses.
 4. Pedestrian only - this category includes pathways or trails designated for pedestrians only thereby excluding horses and bicycles.
 5. Primitive/Administrative Roads Used as Trails – this category includes unimproved (dirt or gravel) service roads and fire roads which are designated for trail use.

Note that the State Park System Planning Division's survey of public use facilities provided certain figures that were different from those which had been developed in recent years. The data developed by the Planning Division's survey will be considered to be correct and official.

Visitor Attendance - Data on visitor attendance reflects an estimate of the number of individual visits (not the number of individual visitors) to the units of the State Park System during the fiscal year. Using this approach, an individual visiting three units in a day is recorded in the attendance data three times rather than one.

Attendance data is collected at the unit level, sent to the district offices, and thereafter conveyed to the Field Services Division in headquarters. Some units or districts may collect a variety of more detailed attendance or visitor use data (e.g. attendance at a specific area or facility, like a boat launching ramp), but only the unit-wide data on three required categories – free day use, paid day use, overnight use - are conveyed to headquarters to be used for system-wide records. Source: Field Services Division, California State Parks.

The two different categories of visitor attendance reported in this statistical report are generated in different ways, and their consistency and accuracy differ widely.

- Day Use – This is the number of day (non-overnight) visits to the unit in question. “Day use”, as used in this column, includes both free day use and day use for which a fee is paid for entry into the park. Day use includes park entry by any means, by motor vehicle of any type, on foot, on bicycle, by boat or on horseback. A single visit is counted regardless of the length of stay or variety of activities undertaken. Historically, approximately 30% of day use is paid and the remainder is free. Day use admission based on the use of annual passes is included in this data.
- Camping - This is the number of overnight visits to the unit in question by visitors using the many types of sites and structures listed above, as well as using temporary overflow areas.

Not all units collect visitor attendance information for day use and overnight use in the same way. In a few instances, usually historic units with per-person admission charges, there are actual counts of visits. In most units, however, attendance figures are the result of making estimates, using various techniques and producing results of widely different levels of accuracy. The estimation techniques may range in quality from one unit to the next and they may be changed at any unit at any time. While the accuracy of these figures has substantial limitations, it is believed that in the aggregate, over time, orders-of-magnitude and broad trends in visitor use can be determined with some validity.

It is clear that, for the entire State Park System, total attendance is underestimated for three reasons.

1. Little or no data is collected from State Park System-operated units which are small, remote and little used, where gathering this information would not be cost-effective;
2. Data is rarely collected from units which, in large part or in their entirety, are managed not by the State Park System but by another agency or organization through an operating agreement. Many of these units are heavily used ocean beach units with substantial attendance.
3. The failure to report all of the visitors who spend the night in a unit not through traditional camping but instead through the occupancy of such structures as lodges, cabins, yurts, and hostels.

Revenue - Revenue at the field level is the income flowing into a park unit, or into a sector or a district office as a result of parklands and facilities being used by visitors or organizations for a wide range of approved purposes. Information on field-level revenue is generated at the district level and is reported to the Accounting Section and subsequently to the Budget Section in Headquarters. Information source: Budget Section, California State Parks.

The revenue figures used in this report are year-end totals, current as of June 30 of the year, as reported each year in the “Actual” column in the *Governor’s Budget*. Four of the six CalStars revenue categories shown there are needed for this statistical report, reflecting revenue coming directly from the “field.” In the budget document, there is separate information for the 20 districts in the State Park System than for the 5 districts in the OHMVR Division, information which is combined for the purposes of this statistical report. A third and very small category revenue, from California State Parks’ systems of Sno-park facilities, is not included.

- Fees – These are admissions and use fees paid by the visitor, including fees for admission, parking, camping and the use of other park facilities such as boat launch ramps and pay showers. This category includes money from the sale of day use admission passes and Hearst Castle ® tours. This revenue source is represented by CalStars category 140600, State Beach and Park Service Fees.
- Concessions – The bulk of this revenue category is the income from the rentals paid by concessionaires, private entrepreneurs who under contract provide goods and services to park visitors on State Park lands. This category also includes the leases of System lands, dwelling rental, and receipts for special events and filming. In the OHMVR Division, the bulk of their money comes from the sale of OHV licenses (“green stickers”) and from the interest on funds which it has in reserve. The revenue category is represented by CalStars category 152300, Miscellaneous Revenues from Use of Property & Money.
- Miscellaneous – This revenue is the combination of two CalStar categories, 161400, Miscellaneous Revenue, and 164200, Parking Violations.

Revenue earned by or funds transferred to the State Park System at the headquarters level is not reported in this statistical report.

Operating Costs - These are funds from California State Parks’ annual budget which provide for the operation and management of the “field” portion of the State Park System, as described in the Introduction to this report. These monies fund the staff, equipment, utilities and supplies needed to serve the visiting public, to maintain and renovate facilities, and to protect and manage the System’s natural and cultural resource base. The operating costs reported in this statistical report are reported each year in the “Actual” column in the *Governor’s Budget*. Information Source: Budget Section, California State Parks.

These funds are allocated by California State Parks Field Services Division directly to the individual districts, thereby allowing each district the flexibility to

make allocations and reallocations throughout the year to its various units based on changing need.

Revenue as % of Operating Costs - A computation made to indicate in a rough way the degree to which a State Park System as a whole or any of its districts are “self-supporting”, a point where revenue equals or exceeds operating costs. The district figure ranges widely, depending largely on the revenue-generating capability of the units and properties within a district. Also important in determining the size of this figure is the degree to which the operation of the district’s set of units is particularly labor-intensive and whether the district’s units and properties are located close to one another or are widely distributed.

Source: Planning Division, California State Parks computations.

Staffing - The operation and management of the units and properties of the State Park System, as well as the district and sector offices, requires a large and diverse professional staff. The two staffing categories of concern here are permanent full-time staff (indicated as the number of positions) and temporary staff (measured in terms of person-year equivalents). Information on the annual quantity of what might be deemed another type of staffing, that of non-paid volunteer work, is available from the Interpretation and Education Division.

The data provided in this report is for positions that were authorized rather than those that were actually filled during the fiscal year. These figures are reported annually in the *Governor’s Budget*. Information source: Budget Section, California State Parks.

- Permanent, full time – These are individuals who have permanent civil service status in a wide range of job classifications. They work year-around for the standard 2080 hours per year.
- Temporary/PY equivalent – “Temporary” includes permanent intermittent, seasonal and retired annuitant positions. Many of these employees are normally required during the parks’ busy season, when visitor use is heaviest.

CHAPTER 5 - OTHER AVAILABLE STATISTICS

In addition to the basic statistics or data sets shown in the table in Chapter 3, the State Park System regularly collects a wide variety of other useful information which records and measures many of its activities and operations. Some of this information is portrayed in descriptive or graphic terms as well as in numerical form. Certain material is available through California State Parks' Internet and Intranet sites, with a wider range being available directly from specific sources within California State Parks.

A. Internet/Intranet

Two general sources of information about California State Parks and the State Park System are the State Parks' Internet web site and its Intranet site. These sites contain useful information about California State Parks and the State Park System. They contain information about the individual park units and their attractions, and about a variety of special topics of current relevance to the State Park System. Also available is information about California State Parks' organizational components and some of the work which they do. These latter references make available the contents of a variety of reports, studies and data sets, as well as general information about California State Parks and its State Park System. Most of the contents of the Internet and Intranet are expanded and updated on a periodic basis.

The Internet site is available to the general public at <http://www.parks.ca.gov>. The Intranet is available only for those with access to California State Parks' internal communication system, and is found at <http://isearch.parks.ca.gov>.

B. Direct Sources

A wide variety of specialized data and information can be obtained directly from the organizational units of California State Parks that produce it.

In the following listing, selected areas or topics of information are specified and very briefly described. In the case of each item, California State Parks' organizational source or location of the information is indicated, in terms of the appropriate division, office, section or unit. In addition, a specific resource person is indicated, along with their phone number and email address. These organizational and personal references are current as of the time of this writing but are subject to change over time.

Most of the information referred to below may be made available upon request. Some of it may be available immediately in hard copy, while much of it exists only in a computer database which can be accessed only by the program

manager. In many cases, the level and format of the data can be tailored to the specific needs of the individual making the request.

These more specialized areas of information and their organizational sources are as follows.

Accidents - Included here is information from the field on calls for assistance, reports taken and filed, and actions taken as a matter of public safety. Assistance may include first aid, getting needed help, search-and-rescue efforts and finding lost individuals. Incidents involving motor vehicles and boats are reported separately in two different categories.

- Contact: Frank Spear, Law Enforcement & Emergency Services Division, California State Parks, Sacramento (916) 653-0398; fspear@parks.ca.gov.

Aerial Photo Files - Aerial photographs provide important information on land use and conditions in and around State Park System lands. Aerial photographs are routinely purchased by California State Parks for many planning and management purposes. The primary repository and catalogue system for 9"x9" color, infrared, and black and white aerial prints are maintained by the Natural Resources Division in Sacramento.

- Contact: Jim Trumbly, Natural Resources Division, California State Parks, Sacramento (916) 653-0875; jtrumbly@parks.ca.gov.

Archaeological Collections - This database contains a master list of all archaeological artifact collections, by park unit, which is maintained by California State Parks' Archaeological Collections Research Facility. This archive also includes all of the notes, records and photos related to archaeological collections and fieldwork.

- Contact Glenn Farris, Senior State Archaeologist, Archaeology, History & Museums Division, California State Parks, West Sacramento (916) 375-5921; gfarr@parks.ca.gov.

Condition Assessment Database - In 2002, California State Parks conducted an extensive system-wide survey of natural resources in the State Park System to establish a baseline on the general condition of park lands and detailed information on selected natural resource features. Information on such things as rare and endangered species, non-native plants and animals, natural habitats, geologic features and pollution, was collected from park resource specialists and entered into a database. Information on over 195 of the System's park units is included in the database.

- Contact: Art Fong Jr., Natural Resources Division, California State Parks, Sacramento (916) 653-9454; afong@parks.ca.gov.

Cooperating Associations - This database contains information on the formal independent nonprofit citizens' groups which contract with one or more park units to assist in the funding of those units' interpretive and educational programs and

services. Information is available on the identity of each association, its name, address, phone number(s) and email address. Financial information, as reported by the associations, is also available.

- Contact: John D. Mott, Cooperating Associations Program Manager, Partnership Support, Interpretation and Education Division, California State Parks, Sacramento (916) 654-5397; jmott@parks.ca.gov.

Crimes - This database contains information on calls made, reports made, and actions taken by park staff relative to crime in and near State Park System units. Data includes information on investigations, warnings given, and arrests for alleged misdemeanors and crimes.

- Contact: Frank Spear, Law Enforcement & Emergency Services Division, California State Parks, Sacramento (916) 653-0398; fspear@parks.ca.gov.

Cultural Resources: Sites, Structures, Registrations - Information on the number and type of cultural resources in the State Park System is found in the *Index to Historic and Archaeological Resources Owned by California State Parks*. This index lists, by park unit, the number of (1) archaeological sites, (2) historic structures, (3) California Historic Landmarks, (4) National Register and California Register properties, (5) National Historic Landmarks, and (6) Cultural Preserves.

- Contact: John W. Foster, Supervisor, Cultural Resources Program, California State Parks, Sacramento (916) 653-4529; jfost@parks.ca.gov

Facilities – Accessibility - In compliance with the federal Americans with Disabilities Act, California State Parks in 2000 made a very detailed survey rating the accessibility by disabled persons of the facilities in the then-266 units of the State Park System. The level of access was rated as high, medium or low and the information used to set priorities for remedial action.

- Contact Christina Aceituno, Career Executive Assignment, Accessibility Section, Acquisition and Development, California State Parks, Sacramento (916) 445-4144; caceituno@parks.ca.gov

Facilities – Data for Maintenance Purposes - For the purpose of programming California State Parks' facility maintenance activity, the tens of thousands of structures, utilities and other built facilities in the State Park System were surveyed and recorded. In this particular information system, numbers of similar facilities (e.g. individual campsites) were defined as a single facility.

- Contact Valerie Bradshaw, Technical Services Division, California State Parks, Sacramento (916) 653-8542; vbrad@parks.ca.gov.

Facilities – Museum Collections - Data on the condition of facilities used to house museum collections in the State Park System is found in the Museum Collections Facility Index (MCFI) database. Facilities which house collections are surveyed each year for compliance with museum standards for environmental conditions, security, fire protection, and documentation.

- Contact: Bruce Stiny, Museum Curator III, Supervisor, Museum Services Unit, Archaeology, History & Museums Division, California State Parks, Sacramento (916) 375-5903; bstiny@parks.ca.gov.

Facilities – Three Visitor Facility Types in Detail - Through specific annual surveys, actual counts are made of the numerous different types of (1) overnight accommodation facilities, (2) picnic facilities and (3) the number and cumulative length of non-motorized trails in each classified unit and major unclassified property of the State Park System. This data includes information on the capacity of overnight and picnic facilities to accommodate visitors.

- Contact Barry Trute, Planning Division, California State Parks, Sacramento (916) 653-3495; btrute@parks.ca.gov

Flora and Fauna Databases - California State Parks and its contractor, the University of California, Davis, developed computer applications to record names of vertebrates and vascular plants that are found within park units. To date, CalParks Flora and CalParks Fauna contain inventory information for over 170 park units, a total of over 50,000 records. A companion application detailing actual observations of plant and animals within park units, "Observe-it", holds records for over 90 park units. This second database has not been as widely used; at present there are over 4,500 animal observations and 190 plant records in the Observe-it database.

- Contact: Dave Shaub, Environmental Manager, Natural Resources Division, California State Parks, Sacramento (916) 653-9374; dshaub@parks.ca.gov.

Incidents - This database contains information on public assistance events in park units that are not covered in any other public safety category, such as accidents or crimes.

- Contact: Frank Spear, Law Enforcement & Emergency Services Division, California State Parks, Sacramento (916) 653-0398; fspear@parks.ca.gov.

Interpretive programs - Data is available on types of formal and informal programs that take place in park units, things such as guided hikes, craft demonstrations, Junior Ranger programs and off-site school programs. Information is provided on the number of each type of program given, hours of programming completed, the characteristics of the presenters and visitor attendance at the programs.

- Contact: John Werminski, Regional Interpretive Specialist, Interpretation and Education Division, California State Parks, Sacramento (916) 653-8959; jwerm@parks.ca.gov.

Legislative Districts - Each State Park System unit and property is located in one or more of three types of legislative districts - U. S. Congressional districts, State

Senate districts and State Assembly districts. Information is available on the districts in which any park or property is located.

- Contact Melissa Roman, Legislation Office, California State Parks, Sacramento (916) 653-6887; mroman@parks.ca.gov.

The Museum System (TMS) database - Information about California State Parks' artifact and photographic collections, archaeological sites, and paleontological sites is available on "The Museum System," a database managed by the Archaeology, History & Museums Division. The database contains records of over 400,000 objects and over 12,000 sites located throughout the State Park System. Images are linked to approximately 100,000 records. The database may be accessed by authorized State Park employees through the wide-area network (WAN) or Internet connections.

- Contact: Yuk-Hoi (Winnie) Yeung, Museum Curator II, System Administrator, Archaeology, History & Museums Division, California State Parks, Sacramento (916) 654-4728; wyeun@parks.ca.gov.

Park Features, Attractions and Associations - Information on a wide range of categories of features and attractions found in units of the State Park System (e.g. visitor centers, Native American sites, habitat types, blacksmithing demonstrations) is found in the 310-page Park-to-Park Index.

- Contact: Jenan Saunders, Interpretive Planning and Programs, Interpretation and Education Division, California State Parks, Sacramento (916) 653-0768; jsaunders@parks.ca.gov.

Photographic Archives - Thousands of images of park units, cultural artifacts and important park-related persons are available. Media includes b/w prints and negatives, 35mm slides and color prints from slides.

- Contact: Wil Jorae, Museum Curator I, Interpretation and Education Division, California State Parks, Sacramento (916) 375-5930; wjorae@parks.ca.gov.

Reservations for Campsites, Hearst Castle ® - A large share of the system's campsites and all of the tours of Hearst Castle ® are available by reservation. Information is available on the number of camp units subject to reservation and the number of reservations actually made for camping or Hearst Castle ® tours.

- Contact Jimmy Low, Reservations Manager, Concessions, Reservations, and Fees Division, California State Parks, Sacramento (916) 654-1603; jlow@parks.ca.gov.

CHAPTER 6 - HISTORY OF THIS REPORT

The first annual statistical report for the State Park System was published for the 1961-62 fiscal year. Prior to that, information on the System's acreage, facilities, attendance, income, expenditures and staffing was available largely from scattered sources within California State Parks and were on various occasions combined into a single publication for use in special studies or reports. Exhibit 1 provides a list of the documents which are recognizable as earlier statistical reports.

Following the publication of the State Park System's first specific annual statistical report, for fiscal year 1961-62, identical or similar reports were issued covering the years through 1989-90. Most of these reports provided information for a single fiscal year, although some covered three or four fiscal years in a single volume. In a multi-year report, some items of data for a given fiscal year may be different than that which had been presented for that particular fiscal year in a previous year's report. This reflects the fact that the data was modified after the close of the original fiscal year by the addition of new information arriving after the end of the year. By convention, the data that is considered valid and used is that which is reported for the year in which the report was published, usually the smallest figure in any such series.

Over this 29-year period, these statistical reports were altered somewhat as to their title, the range of their information and their formatting. As the series developed, there was more analysis of the subject year's data and its comparison with that from previous years.

Due to an administrative reorganization and subsequent budgetary limitations, the creation and publication of the series of annual statistical reports ceased in 1990. During the following years, it became clear that such a report was needed, that it was very useful to have such information assembled annually and made readily available to staff at all levels, as well as to interested persons outside of California State Parks.

In late 2002, California State Parks' Planning Division undertook to reinstitute this publication, to develop and publish once again a State Park System statistical report with at least the scope of the last one in the series, published eleven years earlier. The 2001/02 *Statistical Report* was the first product of this new effort.

The scope of the document was expanded to provide information and analysis well beyond that found in any prior statistical report for the State Park System. Among these additions are:

- The formatting of each district's units and properties (where appropriate) in terms of the sectors into which the district was organized at the end of the fiscal year;

- Very detailed information on the definitions, source of and quality of each set of basic data, often with cautions as to its use;
- Information on the availability, source and quality of a wide range of regularly collected State Park System data that is important but the inclusion of which was beyond the scope of the basic data set of the statistical report; and
- A more detailed analysis of the year's basic data and some comparison with relevant data from earlier years, an effort that will be more useful in the coming years.

As mentioned in the Introduction, the statistics in this report are considered California State Parks' data "of record" and will be used as the basis for the reports, studies and analyses subsequently developed by California State Parks staff.

EXHIBIT 1 - STATISTICAL REPORTS FOR THE STATE PARK SYSTEM

Year Document Title

A. Division of Beaches and Parks

1949-50	} <i>Report on A Decade – May 2, 1960</i>
1950-51	
1951-52	
1952-53	
1953-54	
1954-55	
1955-56	
1956-57	
1957-58	
1958-59	
1959-60	not available
1960-61	not available
1961-62	<i>Annual Report 1961-62</i>
1962-63	<i>Annual Report 1962-63</i>
1963-64	<i>News and Views Statistical Report for the Division of Beaches and Parks 1963-64</i>
1964-65	<i>Statistical Information for the Division of Beaches and Parks: Fiscal Year 1964-65</i>
1965-66	<i>Division of Beaches and Parks: Statistical Report 1965-66 Fiscal Year</i>

B. State Parks

1966-67	<i>Statistical Report for 1966-67 Fiscal Year</i>
1967-68	<i>Statistical Report for 1967-68 Fiscal Year</i>
1968-69	<i>Statistical Report for 1968-69 Fiscal Year</i>
1969-70	<i>1969-70 Fiscal Year Statistical Report</i>
1970-71	<i>1970-71 FY Statistical Report</i>
1971-72	<i>Statistical Report 1971-72 Fiscal Year</i>
1972-73	<i>Statistical Report 1972-73 Fiscal Year</i>
1973-74	<i>Statistical Report 1973-74 Fiscal Year</i>
1974-75	<i>Statistical Report 74-75 Fiscal Year</i>
1975-76	<i>Statistical Report 1975-76 Fiscal Year</i>
1976-77	} <i>Statistical Report – Fiscal Years 1976-1977, 1977-1978, 1978-1979</i>
1977-78	
1978-79	

1979-80	<i>Statistical Report – Fiscal Year 1979-80</i>
1980-81	} <i>Statistical Report - Fiscal Years 1980-81, 1981-82, 1982-83, 1983-84</i>
1981-82	
1982-83	
1983-84	
1984-85	} <i>Statistical Report – Fiscal Years 1984-85, 1985-86, 1986-87</i> } <i>Statistical Report –Fiscal Years 1985-86, 1986-87, 1987-88</i>
1985-86	
1986-87	
1987-88	
1988-89	<i>State Park System Statistical Report – Fiscal Year 1988/89</i>
1989-90	<i>Statistical Report – Fiscal Year 1989/90</i>
1990-91	not published
1991-92	not published
1992-93	not published
1993-94	not published
1994-95	not published
1995-96	not published
1996-97	not published
1997-98	not published
1998-99	not published
1999-00	not published
2000-01	not published
2001-02	<i>California State Park System Statistical Report: 2001/02 Fiscal Year</i>
2002-03	<i>California State Park System Statistical Report: 2002/03 Fiscal Year</i>
2003-04	<i>California State Park System Statistical Report: 2003/04 Fiscal Year</i>
2004-05	<i>California State Park System Statistical Report: 2004/05 Fiscal Year</i>
2005-06	<i>California State Park System Statistical Report: 2005/06 Fiscal Year</i>
2006-07	<i>California State Park System Statistical Report: 2006/07 Fiscal Year</i>
2007-08	<i>California State Park System Statistical Report: 2007/08 Fiscal Year</i>

(see Appendix A in *California State Parks Statistical Report – 2001/02*)

APPENDIX A - SELECTED DATA – 1990/91 TO 2000/01

As indicated in Exhibit 1, there were no issues of the State Park System annual statistical report published during the eleven fiscal years from 1990/1991 through 2000/2001. Thus, the important data which they would have contained is not available. This data gap makes it difficult to quickly find or construct a year-by-year series for the report's critical data categories, such as acreage, visitor attendance, revenue, operating costs and the like.

So that this missing data would not remain forever unavailable, an effort was made to locate it in California State Parks' hardcopy or electronic records. To locate or to create after the event at least some portion of these missing data sets, a search was made of the active or archived records of California State Parks. Appendix A of the 2001/02 *Statistical Report* contains a number of important categories of State Park System information that were located or created, thereby filling in as well as is possible the gap caused by the missing statistical reports. Those needing these data should consult that report.

As indicated in the 2001/02 *Statistical Report*, there are a variety of problems which made impossible the creation of some of the missing data in a context and format which matches that of this present document. There are many limitations in the historic data, and some of these limitations would apply even if the annual figures were readily available. In many cases, the definitions of data terms were not clear or have changed over time, making difficult a good transition in a data set from one fiscal year to a subsequent year where new definitions apply. In other cases, there may be changes in the methods of collecting data from the original field sources and processing it at headquarters.

Below the system-wide level of data, at the district-level of information, there is an insurmountable problem of consistency in the geographic aggregation of earlier unit-level data. It is not possible to be consistent because of the various field-level management reorganizations which have taken place over the eleven-year period. These reorganizations have altered the number and configurations (and even names) of the districts, and thus changed the number and identity of the units and properties which each contains.

With these factors in mind, the eleven years of missing information for the key data sets which were identified or created were presented only at the level of aggregation which reflects the State Park System as a whole. Where, over the course of the eleven years there were changes in data definitions or collection processes, these matters were noted below the data tables as warning to the reader. In spite of the recognized, albeit unavoidable, shortcomings in this data, it was considered the official data, the data "of record", for the purposes they represent.

As indicated above, these eleven-year data sets were made available in Appendix A of the 2001/02 *Statistical Report* in five sections, using in the same sequence in which the data sets appear in the table in this report's Chapter 3. These sections are:

1. Acreage
2. Public Use Facilities
3. Visitor Attendance
4. Revenue - Fees, Concessions, Miscellaneous
5. Operating Costs and Staff Levels

Where the reader seeks more detailed data than was provided in these tables, contact should be made with California State Parks' most appropriate division, office or section identified in Chapter 5.

APPENDIX B - PUBLIC USE FACILITY SURVEY – FY 2007/08

To obtain the Public Use Facility information needed for the present statistical report, the Planning Division made an exhaustive online unit-by-unit survey in the summer/fall of 2008 to get exact figures for the following types of visitor facilities:

- Overnight use facilities – individual (or “family”) and group campsites, as well as a variety of specific types of shelters, structures and commercial lodging accommodations
- Picnic facilities – individual (or “family”) and group
- Trails – number and mileage of paths and unimproved roadways available to users other than those using off-highway vehicles
- Interpretive/Recreation and Visitor Service facilities – a one time request of 18 different facility related yes or no questions.

An online survey was completed by appropriate field staff for every classified unit and major unclassified property, information provided would reflect the situation as it was on June 30, 2008. An example of this survey including totals for each question appears on the following pages.

As shown on the survey, this instrument broke these four broad categories down into twenty-five subcategories, each of which was carefully defined so as to be mutually exclusive of the others. The instrument also sought information on the “visitor capacity” of each subcategory of overnight use and day use facility. This figure reflects the number of people (or in one case, boats) who could occupy the facilities at one time, a factor that is sometimes termed a facility’s “instantaneous capacity.” The following 2007/08 Unit Facility Survey summary indicates the totals for each category and grouping of categories.

As indicated in the definition of public use facilities in Chapter 4, twenty-three of the twenty-five subcategories were combined into the six categories of public use facilities reported in the present document. Because they were by their nature open-ended and poorly defined, and thus not subject to being precisely counted, the two subcategories of overflow camping were not used in the report.

This survey did not seek information on trails used by off-road vehicles because many of these facilities are not well defined and in some cases are indistinguishable from the “volunteer trails” from cross-country riding. The “Trails” data in statistical reports in fiscal year 1989-90 and earlier had contained trails used by off-road vehicles.

STATE PARK SYSTEM: 2007-2008 FACILITY SURVEY SUMMARY

I. Overnight Use Facilities

A. Individual/Family Camp Sites

		2007-08 Survey Responses	
		Number of Sites	Visitor Capacity: # of people
1	Primitive/undeveloped: accommodates up to 8 people and two vehicles with a tent space, stove, table and nearby piped water and a chemical or vault toilet	3,366	26,834
2A	Developed (standard): up to 8 people and two vehicles with a tent space, stove, table, nearby piped water and a restroom with flush toilets and hot water; may include showers and laundry sinks. Can accommodate smaller RVs (~under 30 feet)	6,009	45,226
2B	Developed (oversized): up to 8 people and two vehicles with a tent space, stove, table, nearby piped water and a restroom with flush toilets and hot water; may include showers and laundry sinks. Can accommodate smaller RVs (~over 30 feet)	819	5,917
3	RV Hookup: up to 8 people and two vehicles with a paved spur for RV, stove, table and restroom with flush toilets and hot water; each site with electricity and water; sewer connection on site or in unit	1,438	11,504
4	Environmental/Trail Campsite: designated primitive site with a tent space, table, fire ring or stove and a pit toilet in a relatively undisturbed setting	420	2,949
5	Hike-in or Bike Campsite: designated area with a tent space, table, fire ring or stove, with water and toilet facilities nearby	243	1,847
6	Floating Campsite: tent space, table, stove and toilet facilities located on a floating platform, accessible only by boat	10	150
7	Dock Berths or Off-shore Mooring Buoys: please indicate the number of boats that can be accommodated; the vessels can be self-contained or the overnight usage may be on a site on-shore	1,237	4,142
		13,542	92,982

B. Group Camp Sites

		2007-08 Survey Responses	
		Number of Sites	Visitor Capacity: # of people
8	Tent or RV use - primitive or developed: an area with space for many tents or RVs, providing tables, stoves or fire rings, access to water and toilet facilities; often used by reservation only	235	11,305
9	Horse Camps - primitive or developed: a group area reserved only or mainly for the use of horse groups, providing facilities needed for managing the horses; often used by reservation only	86	1,225
		321	12,530

C. Overflow Camping Areas

		2007-08 Survey Responses	
		Number of Sites	Visitor Capacity: # of people
10	Enroute/Wayside Camping: overnight, self-contained RV occupancy of day-use or other paved areas, limited and specified sites, single-night only; day-use tables and sanitation facilities available	429	3,447
11	Open, Casual Areas: unmarked portions of open fields, dirt or gravel areas where tents and RVs may be used sometimes; support facilities may be limited	41,254	332,251
		41,683	335,698

STATE PARK SYSTEM: 2007-2008 FACILITY SURVEY SUMMARY

Continued

		2007-08 Survey Responses	
D. Overnight (non-camping) Facilities - Structures		Number of Sites	Visitor Capacity: # of people
12	Tent Cabins/Shelters: semi-permanent tent on raised wood platform or three-sided shelter with roof, with a supporting table, cooking and restroom facilities	60	392
13	Rustic Cabins: enclosed building with appropriate facilities, some of which (restrooms) may be located outside of the building	137	760
14	Yurts: shelter with appropriate facilities, some of which (restrooms) may be located outside the structure	0	0
15	Bark Houses: Native American-type shelter with appropriate facilities, some of which (restrooms) may be located outside the structure	6	45
16	Modern Lodge/Motel/Detached Cabins: with rooms, usually for two occupants, with heating, electricity, hot and cold running water and restrooms; may be operated by concessionaires	442	1,544
		645	2,741

II. Day-Use Facilities

A. Picnic Facilities

		2007-08 Survey Responses	
		Number of Sites	Visitor Capacity: # of people
17	Family Picnic Sites: a small area with a table, stove or fire rings, with nearby parking, water and restrooms (sometimes used by groups but intended for individuals or families)	6,811	54,488
18	Group Picnic Sites: a large area with a number of tables, stoves or fire rings, with nearby parking, water and restroom facilities, often arranged for group use and often used by reservation only	208	17,468
		7,019	71,956

III. Trail Use Facilities (on DPR lands only)

		2007-08 Survey Responses	
		Number of Trails	Total Miles of Trail
19	Multiple Use Trails: pathways/trails designated for all three user types: pedestrian, horse and bicycle	471	1,290.22
20	Equestrian/Pedestrian: pathways/trails where designated use excludes bicycles	245	594.72
21	Bicycle/Pedestrian: pathways/trails where designated use excludes horses.	138	275.13
22	Pedestrian only: pathways/trails where designated use excludes horses and bicycles.	729	780.40
23	Primitive/Administrative Roads Used as Trails: dirt/gravel routes maintained as a road but designated for trail use.	719	1,308.38
		2,302	4,248.85

STATE PARK SYSTEM: 2007-2008 FACILITY SURVEY SUMMARY

Continued

IV. Interpretive/Recreation and Visitor Service Facilities

24 Interpretive/Recreation Facilities	2007-08 Yes Survey Responses
<u>Boat Mooring/Marina/Ramp</u>	21
<u>Marina</u>	9
<u>Interpretive Exhibits</u> : educational/interpretive displays	148
<u>Historical Places</u> : sites of historical or cultural interest	110
<u>Museum</u> : if facility is included within a visitor center then also list museum here	67
<u>Visitor Center</u>	101
<u>Stable</u> : for boarding and/or renting horses or mules	4
<u>Playground</u> : structured play area with permanent components	4
<u>Vista Point</u> : developed area with available parking that is maintained	36
25 <u>Equestrian Staging Area</u> : developed area for preparation and/or completion of ride	30
Visitor Service Facilities	2007-08 Yes Survey Responses
<u>Comfort Station</u> : a permanent restroom facility including pit and flush toilets	183
<u>Combination Building</u> : a permanent structure with shower and restroom	84
<u>Outdoor Shower</u> : typically found on beaches for rinsing	46
<u>Food Service Facility</u> : providing sit down to take out dining. Food prepared by others.	22
<u>Parking</u>	192
<u>RV Dump Station</u>	52
<u>Camp Store</u> : retail facility selling supplies for camping, hiking, boating, etc.	21
<u>Gift Shop</u> : retail facility where primary commodity is souvenirs and NOT food or supplies.	72

APPENDIX C - INTERNAL UNITS, MINOR SYSTEM PROPERTIES

Internal Units

As indicated in Chapter 2, during the 2007/08 fiscal year, the State Park System consists of 259 classified units and 19 major unclassified properties, for a total of 278 units and properties. Not included in these figures are three kinds of classified units, Cultural Preserves, Natural Preserves and State Wildernesses. These units, informally termed “internal units”, are portions of or lands internal to one of the System’s basic 259 classified units. The purpose of creating such units is to provide a higher level of protection to the resources than would be required by the classification of the “parent unit”, the unit in which it is located.

Internal classified units are not listed in the table in Chapter 3. They appear in List 3 of each annual edition of California State Parks’ *Planning Milestones* publication.

There were 84 internal units in the State Park System on July 1, 2007. Since internal units are operated as an integral part of the parent unit in which they are located, there is little data available which applies to internal units alone, other than for their classification date, county of location and acreage. There is no information available for internal units in other data categories such as public use facilities, visitor attendance, operating costs, staffing, and the like. Any information of this type which is relevant to an internal unit would be included as part of that type of information which is relevant to the parent unit as a whole.

Table C-1, following, provides the available data for internal units.

Minor System Properties

In addition to the State Park System’s 278 classified units and major unclassified properties, there are a handful of minor, usually very small properties, which are arranged by the State Park System. Not being part of the standard California State Parks, they are not listed in the table in Chapter 3. They are usually managed by the headquarters office of the State Park System district in which they are located.

Table C-2, below, provides the basic information on these properties.

Table C-1

State Park System - Internal Units

June 30, 2008

SUBUNIT	UNIT NUMBER	PARENT UNIT	DATE CLASSIFIED	COUNTY	ACRES OWNED
Ah-Ha-Kwe-Ah-Mac/ Stonewall Mine CP	909	Cuyamaca Rancho SP	Mar 1983	SD	430.00
Anderson Island NP	397	Folsom Lake SRA	Sep 1974	ELD,PLA,SAC	10.00
Anderson Marsh NP	926	Anderson Marsh SHP	Jun 1985	LAK	540.00
Antone Meadows NP	365	Burton Creek SP	Jul 1978	PLA	160.00
Anza-Borrego Desert SW	624	Anza-Borrego Desert SP	Mar 1981	IMP,RIV,SD	297,400.00
Arena Rock Marine NP	930	Manchester SP	Jul 1987	MEN	500.00
Asilomar Dunes NP	993	Asilomar SB	Sep 2004	MON	25.00
Barrel Springs CP	913	Ocotillo Wells SVRA	Mar 1983	IMP,SD	1.00
Big Lagoon Forest, East NP	914	Harry A. Merlo SRA	Jun 1983	HUM	80.00
Big Lagoon Forest, South NP	916	Harry A. Merlo SRA	Jun 1983	HUM	62.00
Big Lagoon Forest, West NP	915	Harry A. Merlo SRA	Jun 1983	HUM	51.00
Boney Mountain SW	910	Point Mugu SP	Oct 1981	VEN	6,190.00
Brush Creek/Lagoon Lake Wetlands and Coastal Dunes NP	947	Manchester SP	Dec 1992	MEN	650.00
Bull Creek SW	957	Humboldt Redwoods SP	Nov 2001	HUM	10,450.00
Burton Creek NP	364	Burton Creek SP	Jul 1978	PLA	170.00
Calaveras South Grove NP	305	Calaveras Big Trees SP	Nov 1984	CAL,TUO	1,260.00
Carl "A" Anderson Redwoods NP	956	Humboldt Redwoods SP	Nov 2001	HUM	3,520.00
Carmel Lagoon and Wetlands NP	971	Carmel River SB	Nov 1985	MON	53.00
Civilian Conservation Corps CP	977	Mount Diablo SP	Nov 1989	CC	640.00

State Park System - Internal Units

June 30, 2008

SUBUNIT	UNIT NUMBER	PARENT UNIT	DATE CLASSIFIED	COUNTY	ACRES OWNED
Cuish-Cuish (East Mesa) CP	961	Cuyamaca Rancho SP	Mar 1983	SD	530.00
Cuyamaca Meadow NP	943	Cuyamaca Rancho SP	Nov 1990	SD	950.00
Cuyamaca Mountain SW	906	Cuyamaca Rancho SP	Apr 1982	SD	13,210.00
Doane Valley NP	675	Palomar Mountain SP	Oct 1974	SD	450.00
Edwin L. Z'berg NP	342	Ed Z'berg Sugar Pine Point SP	Feb 1977	ELD	160.00
Ellen Browning Scripps NP	633	Torrey Pines SR	Feb 1970	SD	72.00
Freeman Canyon CP	920	Hungry Valley SVRA	Aug 1983	LA, VEN	200.00
Gorman CP	919	Hungry Valley SVRA	Aug 1983	LA, VEN	160.00
Hagen Canyon NP	583	Red Rock Canyon SP	Jul 1974	KER	1,145.00
Henry W. Coe SW	925	Henry W. Coe SP	May 1985	SCL, STA	20,200.00
Heron Rookery NP	471	Morrow Bay SP	Apr 1975	SLO	6.00
Hidden Divide NP	960	Mount San Jacinto SP	Oct. 2002	RIV	255.00
Hungry Valley Oak Woodland NP	917	Hungry Valley SVRA	Aug 1983	LA, VEN	60.00
Inglennook Fen-Ten Mile Dunes NP	949	MacKerricher SP	Jun 1995	MEN	1,285.00
Kaslow NP	903	Malibu Creek SP	Oct 1981	LA	1,920.00
Kechaye CP	904	Millerton Lake SRA	Jun 1981	FRE, MAD	200.00
Kumeyaay Soapstone CP	912	Cuyamaca Rancho SP	Mar 1983	SD	136.00
La Jolla Valley NP	571	Point Mugu SP	May 1972	VEN	600.00
Lake Davis Wetlands and Coastal Dunes NP	948	Manchester SP	Dec 1992	MEN	435.00
Least Tern NP	988	Huntington SB	Jul 1975	ORA	5.00
Liberty Canyon NP	902	Malibu Creek SP	Oct 1981	LA	810.00

State Park System - Internal Units

June 30, 2008

SUBUNIT	UNIT NUMBER	PARENT UNIT	DATE CLASSIFIED	COUNTY	ACRES OWNED
Los Penasquitos Marsh NP	640	Torrey Pines SR	Feb 1970	SD	218.00
Marina Dunes NP	932	Marina SB	Aug 1987	MON	111.00
Mitchell Caverns NP	631	Providence Mountains SRA	Sep 1963	SBD	628.00
Monarch Butterfly NP	924	Natural Bridges SB	May 1984	SCR	16.00
Moore Creek Wetland NP	937	Natural Bridges SB	Oct 1988	SCR	14.00
Mormon Island Wetlands NP	946	Folsom Lake SRA	Jun 1992	ELD,PLA,SAC	110.00
Morro Dunes NP	936	Montana de Oro SP	Jun 1988	SLO	900.00
Morro Estuary NP	445	Morro Bay SP	Jun 1988	SLO	420.00
Morro Rock NP	445	Morro Bay SP	Sep 1969	SLO	45.00
Mount San Jacinto SW	619	Mount San Jacinto SP	Jan 1974	RIV	12,465.00
Murrelet SW	954	Prairie Creek Redwoods SP	Nov 1999	DN,HUM	6,600.00
Nicholas Flat NP	951	Leo Carrillo SP	Oct 1996	LA,VEN	600.00
Ohlone Coastal CP	929	Carmel River SB	Jun 1987	MON	25.00
Pa-nu CP	942	San Simeon SP	Oct 1990	SLO	13.70
Pajaro River Mouth NP	934	Zmudowski SB	Aug 1987	MON	73.00
Pescadero Marsh NP	283	Pescadero SB	Nov 1974	SM	235.00
Pilcha (West Mesa) CP	910	Cuyamaca Rancho SP	May 1983	SD	1,400.00
Pismo Dunes NP	459	Pismo SB	Jul 1974	SLO	400.00
Point Dume NP	991	Point Dume SB	Mar 1992	VEN	34.00
Point Sur Dunes NP	992	Point Sur SHP	Sep 2004	MON	15.00
Red Cliffs NP	585	Red Rock Canyon SP	Jul 1974	KER	365.00
Redwood Heritage SW	955	Jedediah Smith Redwoods SP	Nov 1999	DN	5,500.00
Salinas River Dunes NP	931	Salinas River SB	Aug 1987	MON	105.00

State Park System - Internal Units

June 30, 2008

SUBUNIT	UNIT NUMBER	PARENT UNIT	DATE CLASSIFIED	COUNTY	ACRES OWNED
Salinas River Mouth NP	933	Salinas River SB	Aug 1987	MON	72.00
San Lorenzo Headwaters NP	953	Castle Rock SP	Mar 2000	SCL, SCR, SM	365.00
San Simeon NP	941	San Simeon SP	Oct 1990	SLO	365.00
Santa Clara Estuary NP	568	McGrath SB	Jul 1979	VEN	160.00
Santa Rosa Creek NP	940	San Simeon SP	Oct 1990	SLO	40.00
Santa Rosa Mountains SW	627	Anza-Borrego Desert SP	Feb 1974	IMP, RIV, SD	87,000.00
Silver Strand NP	921	Silver Strand SB	Nov 1983	SD	26.00
Sinkyone SW	133	Sinkyone Wilderness SP	Nov 2006	MEN	7,100
Southampton Bay Wetland NP	944	Benicia SRA	Jun 1991	SOL	210.00
Sunset Wetlands NP	939	Sunset SB	May 1990	SCR	40.00
Tataviam CP	918	Hungry Valley SVRA	Aug 1983	LA, VEN	450.00
Theodore J. Hoover NP	905	Big Basin Redwoods SP	Jan 1982	SCR, SM	23.00
Tijuana Estuary NP	928	Border Field SP	Jan 1987	SD	327.00
Trestles Wetlands NP	953	San Onofre SB	Apr 1984	SD	82.00
Udell Gorge NP	907	Malibu Creek SP	Jun 1982	LA	287.00
Van Damme Pygmy Forest NP	982	Van Damme SP	Jun 1995	MEN	200.00
Water Canyon NP	984	Chino Hills SP	Feb 1999	ORA, RIV, SBD	1,425.00
We-nelsch CP		Anza-Borrego Desert SP	Feb 2005	SD	443.00
West Waddell Creek SW	908	Big Basin Redwoods SP	Nov 1982	SCR, SM	5,810.00
Wilder Beach NP	466	Wilder Ranch SP	May 1980	SCR	67.00
Wilder Dairy CP	464	Wilder Ranch SP	May 1980	SCR	20.00
Woodson Bridge NP	122	Woodson Bridge SRA	Sep 1974	TEH	260.00

Table C-2

Minor System Properties

Property Name	Unit Number	County	Acres Owned
Big Rock Beach	510	Los Angeles County	0.43
Drum Barracks	576	Los Angeles County	0.43
Heilbron Mansion	384	Sacramento County	0.48
Las Tunas SB	544	Los Angeles County	0.16
Manhattan SB	546	Los Angeles County	5.37
Monterey District HQ	200	Monterey County	5.81
Pan Pacific Park	501	Los Angeles County	28.26
San Diego Coast Office Building, Carlsbad (*)	403	San Diego County	0.31
Seccombe Lake SURA	598	San Bernardo County	0.57
Stillwater Cove	210	Sonoma County	36.27

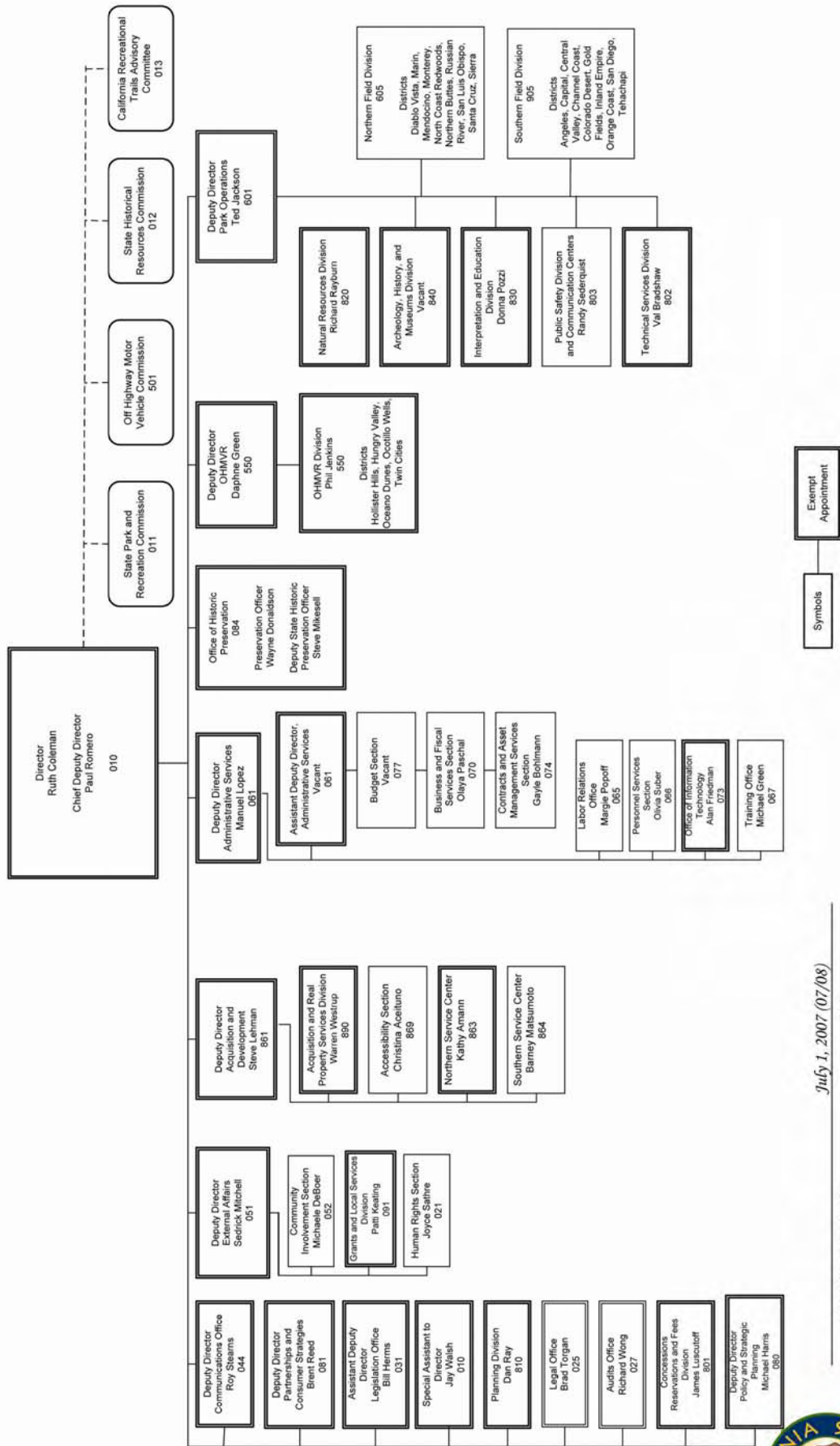
These properties appear in List 5 of the July 1, 2007 edition of the publication *Planning Milestones for the Park Units and Major Properties Associated with the California State Park System*. Additional information on the nature and status of these properties may be found in that publication.

(*) Office of former La Costa District, 2860 Carlsbad Boulevard, Carlsbad: granted by the Division of Forestry, recorded 2/15/73, gift value of \$250.

APPENDIX D – CALIFORNIA STATE PARKS ORGANIZATION CHART

The following page shows an organization chart for California State Parks that was still current as of June 30, 2008.

California Department of Parks and Recreation Organizational Structure



July 1, 2007 (07/08) Date
Ruth Coleman, Director



APPENDIX E - OTHER SOURCES OF PARK SYSTEM DATA

Chapter 5 identified departmental sources that continually generate data and information about many of the field activities and operations that take place in the State Park System. In addition, there exist other sources – libraries, depositories and archives – which house collections of published materials which may contain relevant information. These sources emphasize past, historic data. The most important ones are listed below.

A. California State Parks

Archives - California State Parks' Archives collects, organize, preserves, and makes accessible documents with long-term or permanent value. A variety of California State Parks' statistical reports, resource surveys, planning studies, interpretive reports, acquisition files, leases and deeds are located in the Archives, which also houses California State Parks' Cultural Heritage Library. This library contains a wide variety of books and other publications, of both a scholarly and general nature, published by sources outside of California State Parks.

Contact: Diane Voll, Archaeology, History, and Museums Division, California State Parks, (916) 653-6519, dvoll@parks.ca.gov .

Central Records Office - This office is responsible for the systematic control of the creation, maintenance, use, and disposition of all departmental records relevant to California State Parks' decision-making and activities. Records include documentary materials, books, electronic data, maps, moving images, papers, photographs, sound recordings, made or received by California State Parks in the transaction of public business. This activity is in response to the State Records Management Act.

- Ted Holm, Records Management Analyst II (Specialist), Central Records Office, Administrative Services Division, California State Parks (916) 445-9017; tholm@parks.ca.gov

Internal Departmental "Libraries" - Certain of California State Parks' organizational components house reference libraries and collections containing materials of value to the performance of their function. Information on various aspects of the State Park System may be sought from these sources, which are located as follows:

- Archaeology, History and Museums Division
- Interpretation and Education Division
- Natural Resources Division
- Northern Service Center
- Planning Division

B. Other Sources

California State Library (Sacramento) – This library’s Government Publications Section contains a vast collection of reports, surveys, special studies and yearbooks containing information on the full range of California’s agencies, departments, bureaus and boards.

- Contact: Reference Desk, Government Publications Section, California State Library, 914 Capitol Mall, MS E-29, P.O. Box 942837, Sacramento, CA 94237-0001; 916-654-0069; 916-653-6114 (fax); email: cslgps@library.ca.gov. Hours of operation: 9:30 AM-4 PM, Monday-Friday.

National Association of State Park Directors – Annual Information Exchange series. – Starting with fiscal year 1979, this organization has produced an annual statistical report which encompasses all of the nation’s state park systems. Each lengthy report contains many data series, including acreage, facilities, attendance, and information on each system’s fiscal and personnel matters. In some categories, California State Parks’ definitions (and thus its data) must be altered to fit the needs of the NASPD publication.

- Contact: NASPD, 8829 Woodyhill Road, Raleigh, NC 27613; (919) 676-8365
<http://www.naspd.org>

PUBLICATION CREDITS

The following staff members contributed to the development and publication of the *California State Park System Statistical Report: 2007/08 Fiscal Year*.

Creation of the Basic Document

- Barry R. Trute, Associate Park and Recreation Specialist, Planning Division

Editors

- Alexandra Stehl, Associate Park and Recreation Specialist, Planning Division
- Philomene Smith, Staff Park and Recreation Specialist, Planning Division

Providers of Data, Information and Other Valuable Assistance

- Kim Snyder, Associate Governmental Program Analyst, Acquisition and Real Property Services Division
- Mary Veliquette, Associate Governmental Program Analyst, Facilities Support Division
- Valerie Laam, Staff Services Manager I, Business Management Services Section
- Margo Cowan, Associate Governmental Program Analyst, Interpretation & Ed. Div.
- Nancy Sechrist, Personnel Supervisor II, Personnel Services Section
- Wendy Nodohara, Associate Budget Analyst, Budget Section, Administrative Services Division
- Nathan Pizzo, Contractor, Information Technology Office
- Adrienne Tillis, Division Webmaster, Planning Division

Contributions from Individuals Outside of California State Parks:

- Bruce Kennedy, retired from California State Parks – original text
- Jim Maddox, retired from California State Parks - back cover drawing
- Dale Wilson, retired from California State Parks - historic postmarks
- Phil Carey, retired from California State Parks – front cover and chapter separations

NOTES