



Millerton Lake State Recreation Area

Millerton Lake SRA • 5290 Millerton Road • Friant, CA 93626 • (559) 822-2332
North Shore Campground • 47597 Road 145 • Friant, CA 93626 • (559) 822-2225

With 47 miles of shoreline for water sports, this SRA offers visitors swimming, fishing, and boating. During winter, the park has special boat tours to view the bald eagles. The park's camping facilities include boat camping.

OCCUPANCY: Eight people are allowed per family campsite.

VEHICLE PARKING: Campsites are designed to accommodate no more than three vehicles. Additional vehicles must be parked in the overflow parking lot. Day users may not park in any campsite. Call for information on the extra vehicle charge.

VEHICLE RULES: Vehicles must stay on roads or trails. (This prevents damage to tree roots and plant life.)

TRAILERS: No water or effluent may be discharged onto the ground. Please use appropriate RV sanitation stations.

CHECK-OUT TIME: Check-out time is noon. Please vacate your site by that time. Check-in time is 2 p.m.

NOISE: Radios, voices and other sound-producing devices must not be audible beyond your immediate campsite, regardless of the time of day or night. Generators or other devices are not to be operated between the hours of 8 p.m. and 10 a.m.

DOGS: Dogs must be kept on a leash no longer than six feet and under control

at all times. They must be confined to a vehicle or tent from 10 p.m. to 6 a.m. Please clean up after your pets.

FIRES AND FIREWOOD: Fires are allowed only in established fire rings or camp stoves. Do not build ground fires outside the fire rings or leave campfires unattended. Do not gather firewood in the park—the nutrients must be allowed to recycle back into the ecosystem.

BOATING: All watercraft entering the park must complete a self-inspection for invasive species. No 2-stroke engine shall operate on the water unless it meets current emissions rating of 2 stars. Mooring to or coming in contact with any buoy or buoyline is strictly prohibited.

SWIMMING: Diving is not allowed within the California State Park system.

QUIET HOURS: Quiet hours are from 10 p.m. to 8 a.m. To ensure an enjoyable experience for everyone, please do not disturb other campers, regardless of the time of day or night.

ALCOHOL CONSUMPTION is prohibited on the beaches. Operating a boat under the influence of alcohol or drugs is against the law.

THEFT WARNING: Keep your vehicles locked and your valuables out of sight. Do not leave property out at night. Report suspicious activity to a ranger or camp host.

CAMPING RESERVATIONS: You may make camping reservations by calling (800) 444-7275 (TTY 800-274-7275). To make online reservations, visit our website at www.parks.ca.gov.

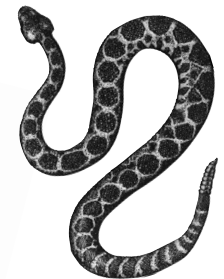
ALTERNATE FORMAT: If you need this publication in an alternate format, contact interp@parks.ca.gov.

PLEASE REMEMBER:

- Look out for rattlesnakes, mountain lions and poison oak.
- Lifeguards are on duty only during summer. The law requires that children wear approved life jackets.



Poison oak



Rattlesnake

Millerton Lake State Recreation Area

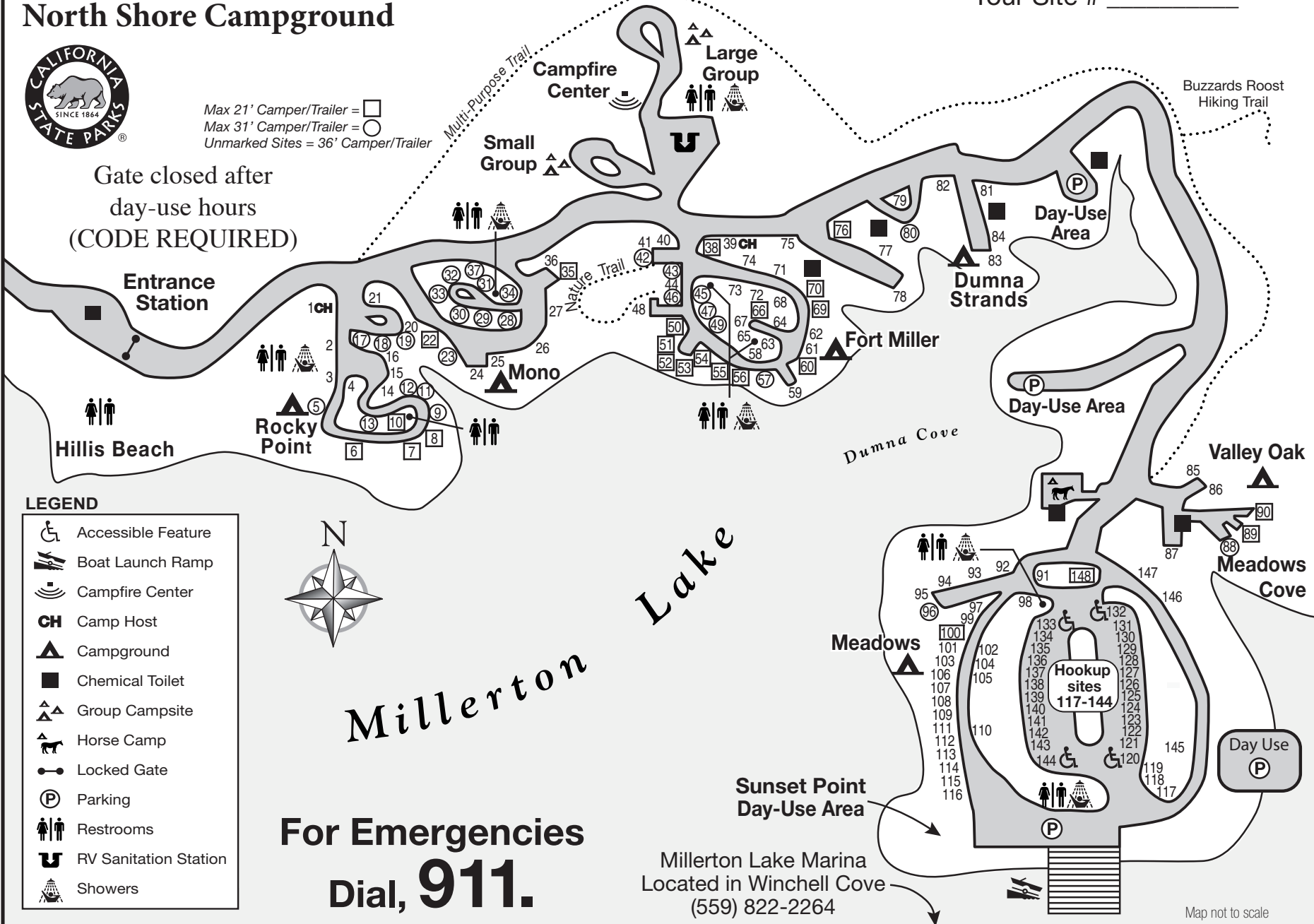
North Shore Campground

Your Site # _____



Max 21' Camper/Trailer = □
 Max 31' Camper/Trailer = ○
 Unmarked Sites = 36' Camper/Trailer

Gate closed after
 day-use hours
 (CODE REQUIRED)



- LEGEND**
- Accessible Feature
 - Boat Launch Ramp
 - Campfire Center
 - CH** Camp Host
 - Campground
 - Chemical Toilet
 - Group Campsite
 - Horse Camp
 - Locked Gate
 - Parking
 - Restrooms
 - RV Sanitation Station
 - Showers



**For Emergencies
 Dial, 911.**

Millerton Lake Marina
 Located in Winchell Cove
 (559) 822-2264

Map not to scale