



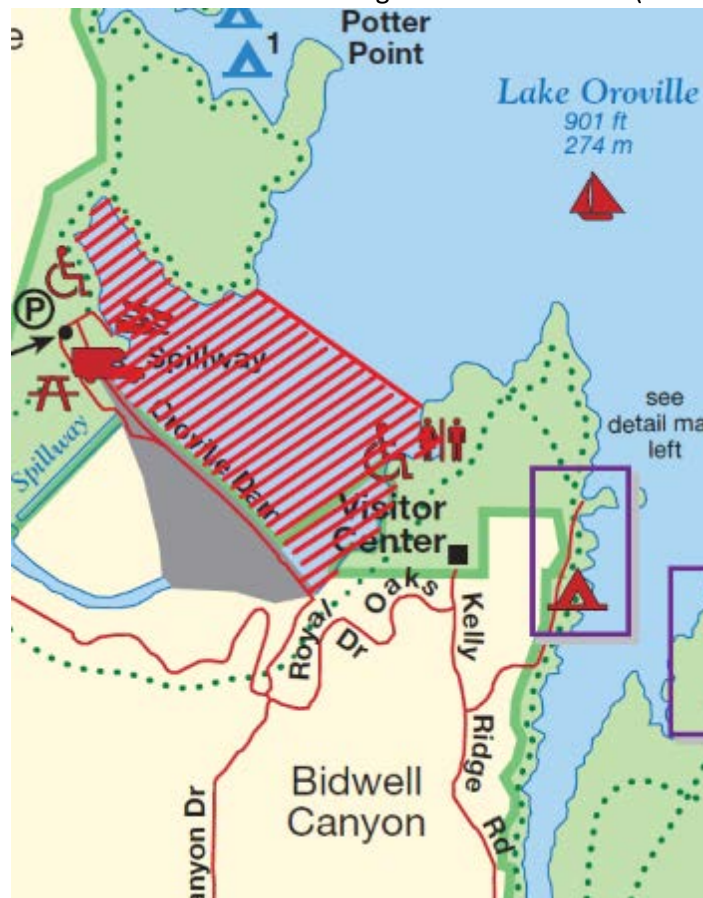
ATTENTION BOATERS



The area of Lake Oroville closest to the dam and extending into the main body of the lake (approximately 1,000 yards) is closed to boating.



The closed area is delineated on the water by a series of buoys which read "Area Closed" and contain the State of California's uniform marking that restricts access (shown above).



Red area above indicating closure.

We apologize for any inconvenience.

California State Parks