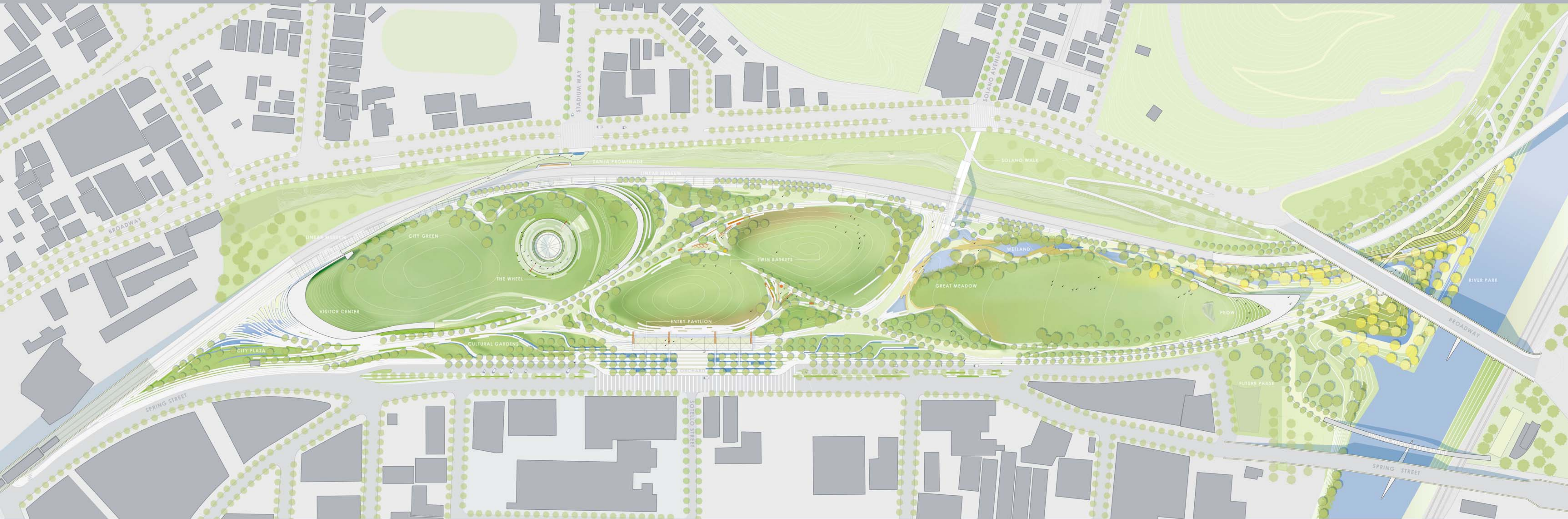
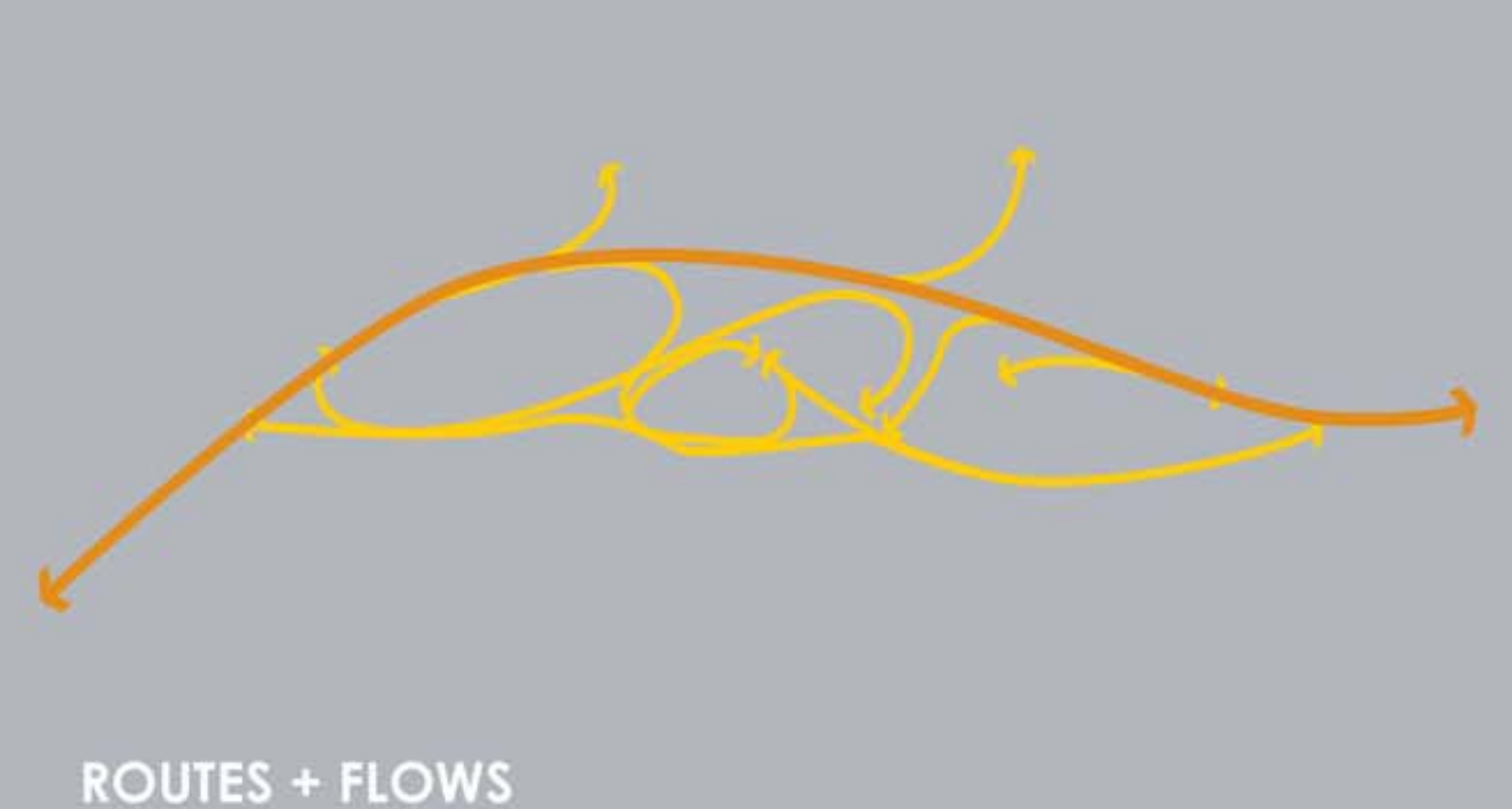
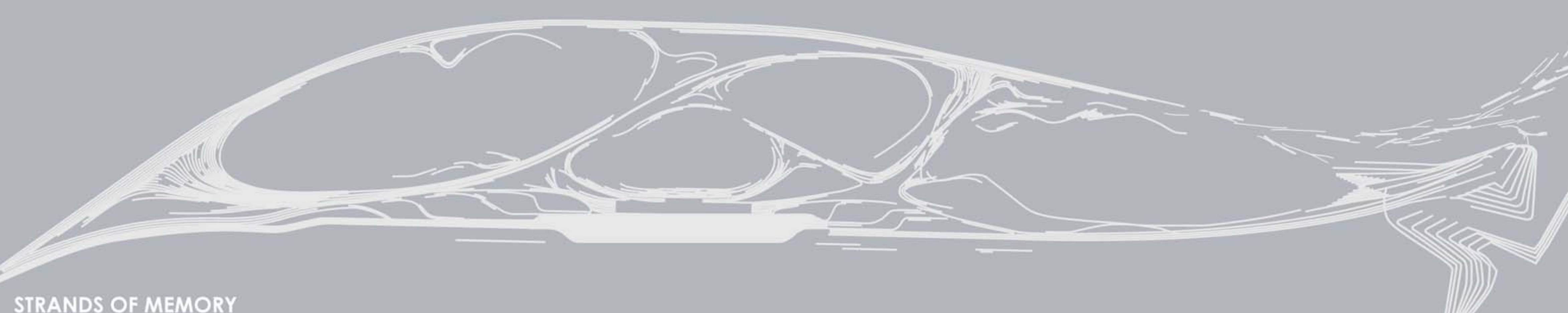
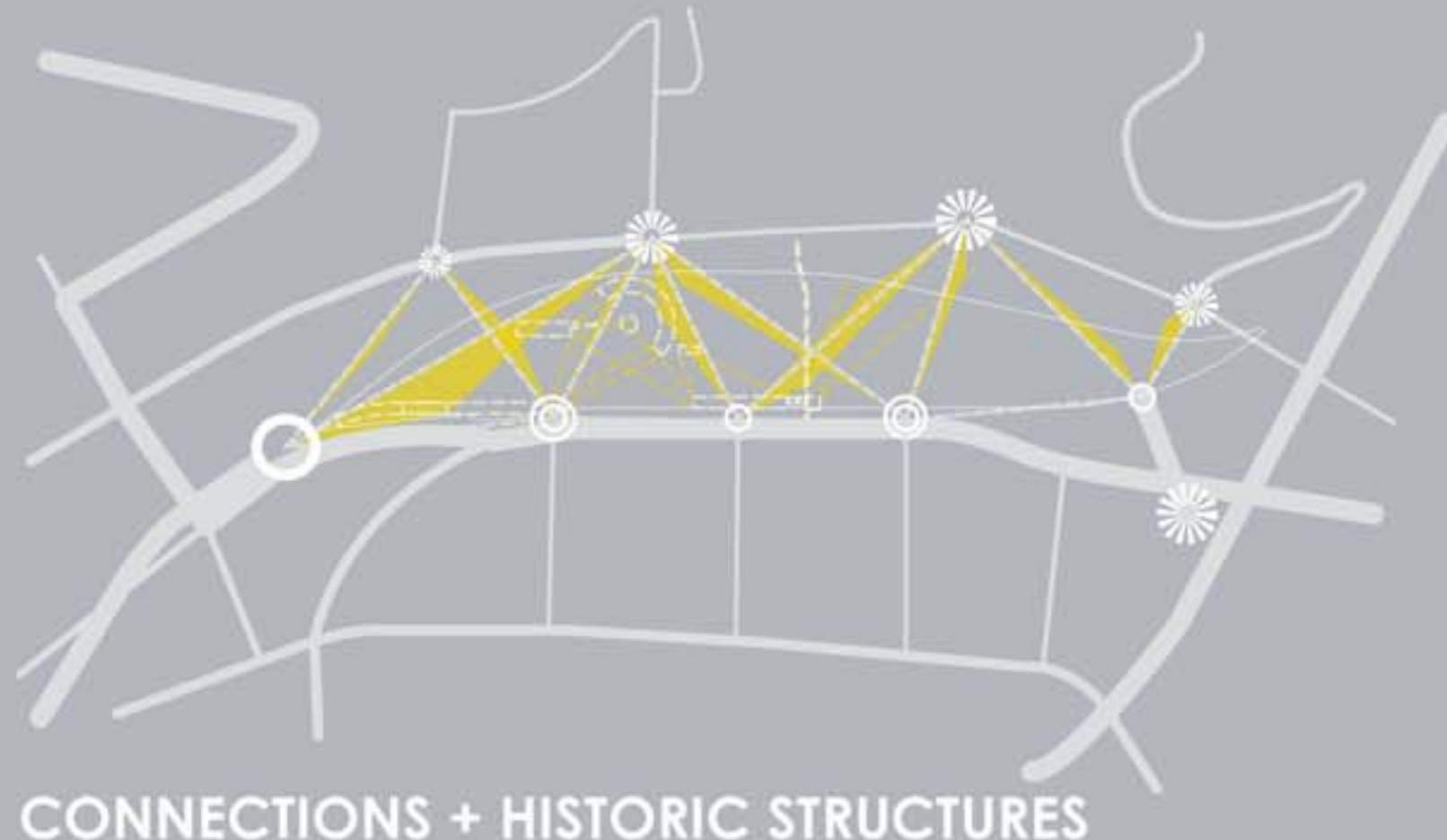


HISTORIES, STORIES, AND MEMORIES FOR GENERATIONS TO COME - PARK AS A COMMON



THIS PLACE HAS A SOUL. CARVED ON THE SIDE BY A BLUFF, SWEEPED BY MOVING WATERS, DRY FARMED, GRACED BY LINEAR ZANJAS, FLATTENED FOR RAIL CARS. THE SOUL OF THIS PLACE MUST SPEAK TO THE PEOPLE WHO COME HERE. LOS ANGELES HAS MANY STORIES TO TELL. WE WILL PROVIDE A SETTING FOR PEOPLE TO RE-CREATE THE CITY WHILE THEY RECREATE. THIS IS A PLACE OF CONNECTION AND HISTORY. WE NEED TO RECONNECT NEIGHBORHOODS THAT HAVE BEEN SEVERED BY ROADWAYS, RAIL LINES AND PREJUDICE.

