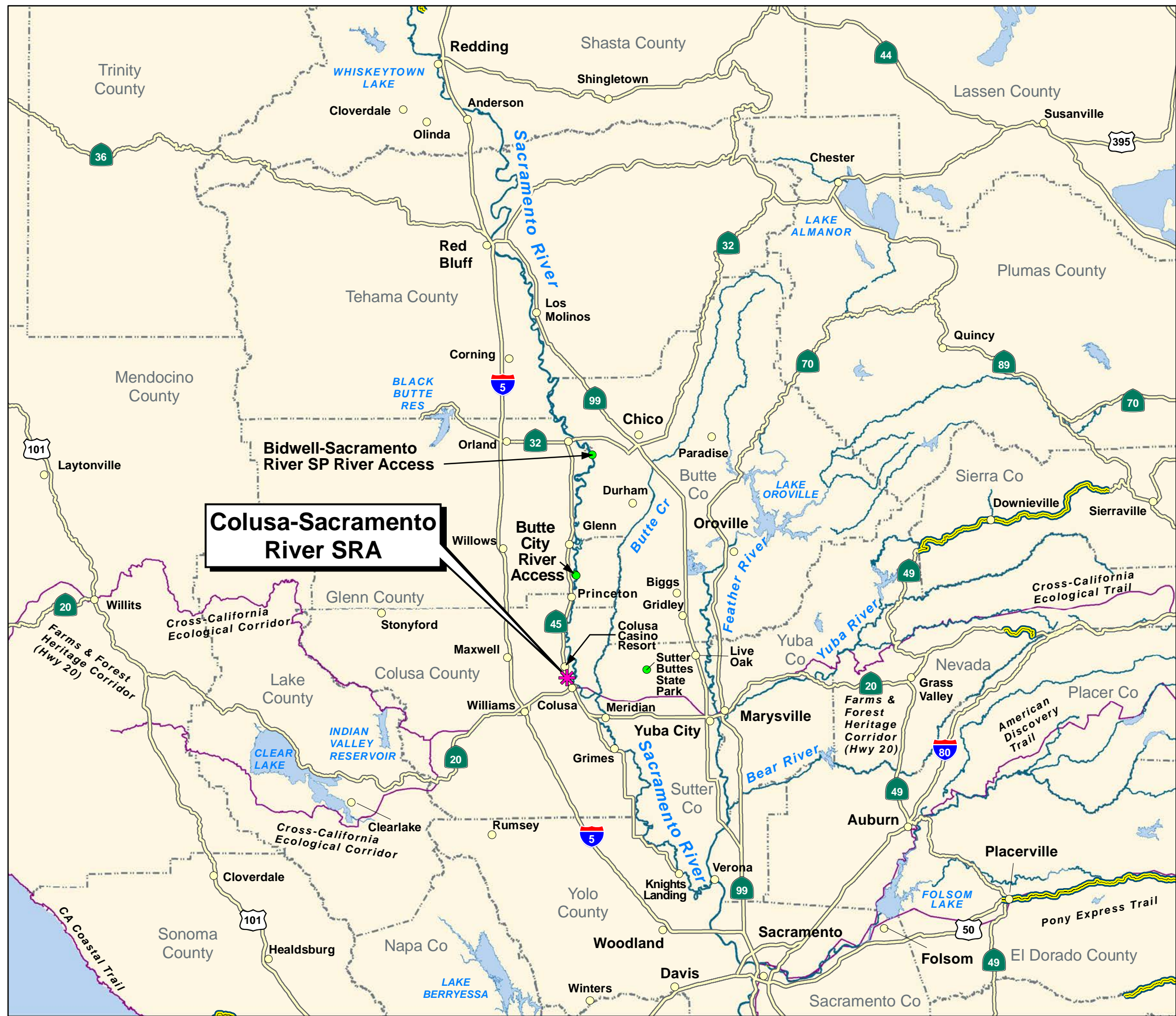


COLUSA-SACRAMENTO RIVER STATE RECREATION AREA DRAFT GENERAL PLAN

FIG 2.1: LOCATION MAP



Legend

- Colusa-Sacramento River SRA
- Other selected State Parks
- Sacramento R. and Selected Tributaries
- County Boundaries
- California Recreational Trails System
- Scenic Highways
- Highways
- Selected Location Names

Map Location, showing Sacramento R. watershed (black outline) and the Sacramento R. Conservation Area (dark olive shading)

Scale
1:922,000
1 inch = 76,833 feet
Miles

0 5 10 15 20 25

NOTES:

Parcel boundaries are approximate and should not be considered legal descriptions. Maps are intended for study purposes only.

PLANNING DIVISION

GENERAL PLAN SECTION

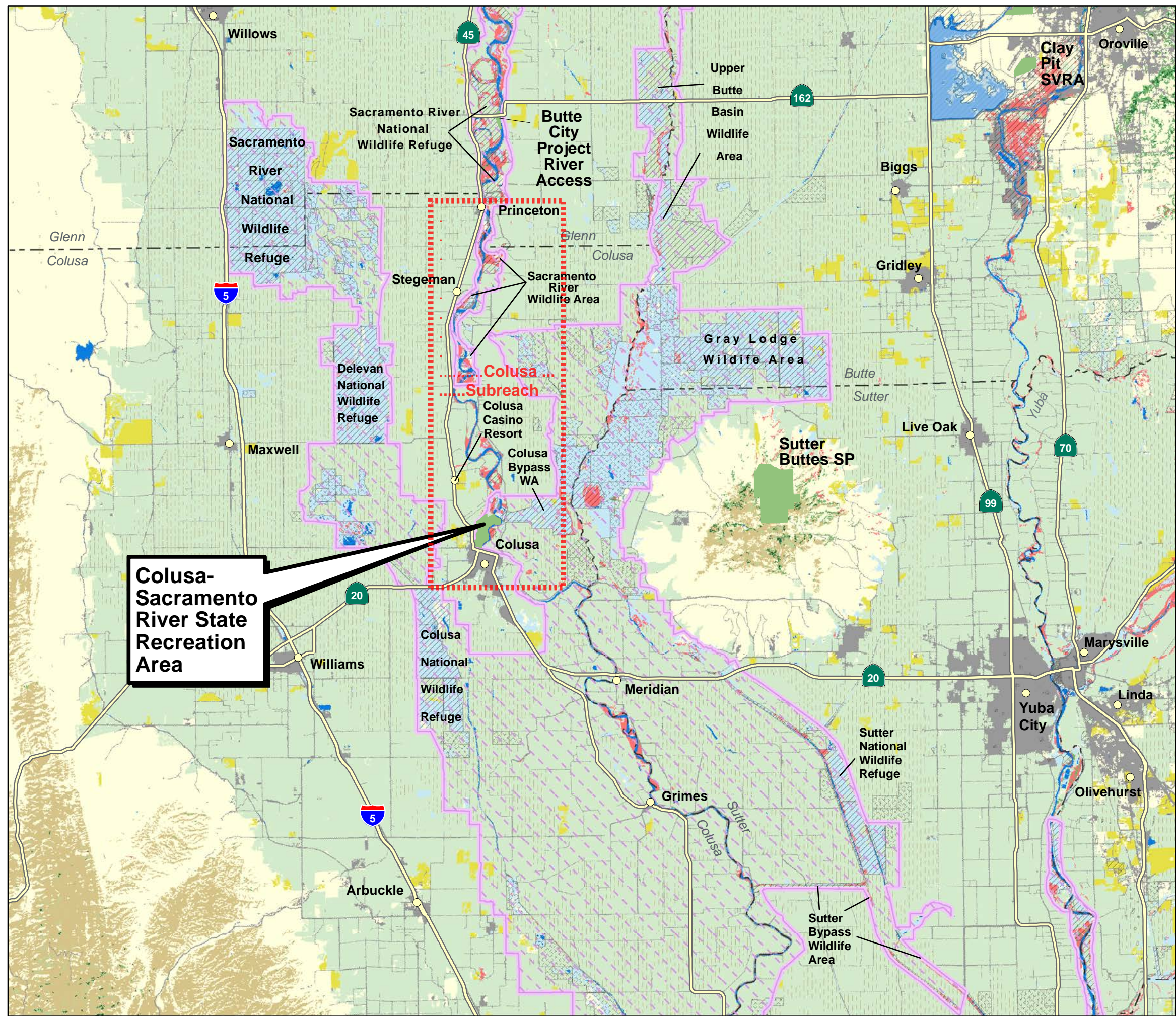
Date: 10/16/2014

Calif. Dept. of Parks & Recreation

DRAFT

COLUSA-SACRAMENTO RIVER STATE RECREATION AREA DRAFT GENERAL PLAN

FIG 2.2: REGIONAL LAND USE



Legend

- Open Water
- Non-Vegetated / Urban
- Deciduous Forest
- Evergreen Forest
- Mixed Forest
- Shrub/Scrub
- Grassland/Herbaceous
- Pasture/Hay
- Cultivated Crops
- Woody Wetlands
- Emergent Wetlands
- Rice
- Calif Protected Lands Overlay
- Conservation Easements
- Important Bird Areas
- Selected Location Names
- Highways
- State Park Boundaries
- County Boundaries

Map Location, showing Sacramento River Conservation Area, based on SB 1086

Redding
Red Bluff
Chico
Colusa
Verona

Data Sources:
1) National Land Cover Database, USGS, 2001, & DWR County Land Use (Rice), 1995-2004.
2) California Protected Lands Database, GreenInfo, Inc, 2011
3) National Conservation Easement Database.
4) Important Bird Areas, California Audubon Society, 2008.

Scale
1:234,700
1 inch = 19,558 feet
Miles

0 1 2 3 4 5

NOTES:

Parcel boundaries are approximate and should not be considered legal descriptions. Maps are intended for study purposes only.

PLANNING DIVISION

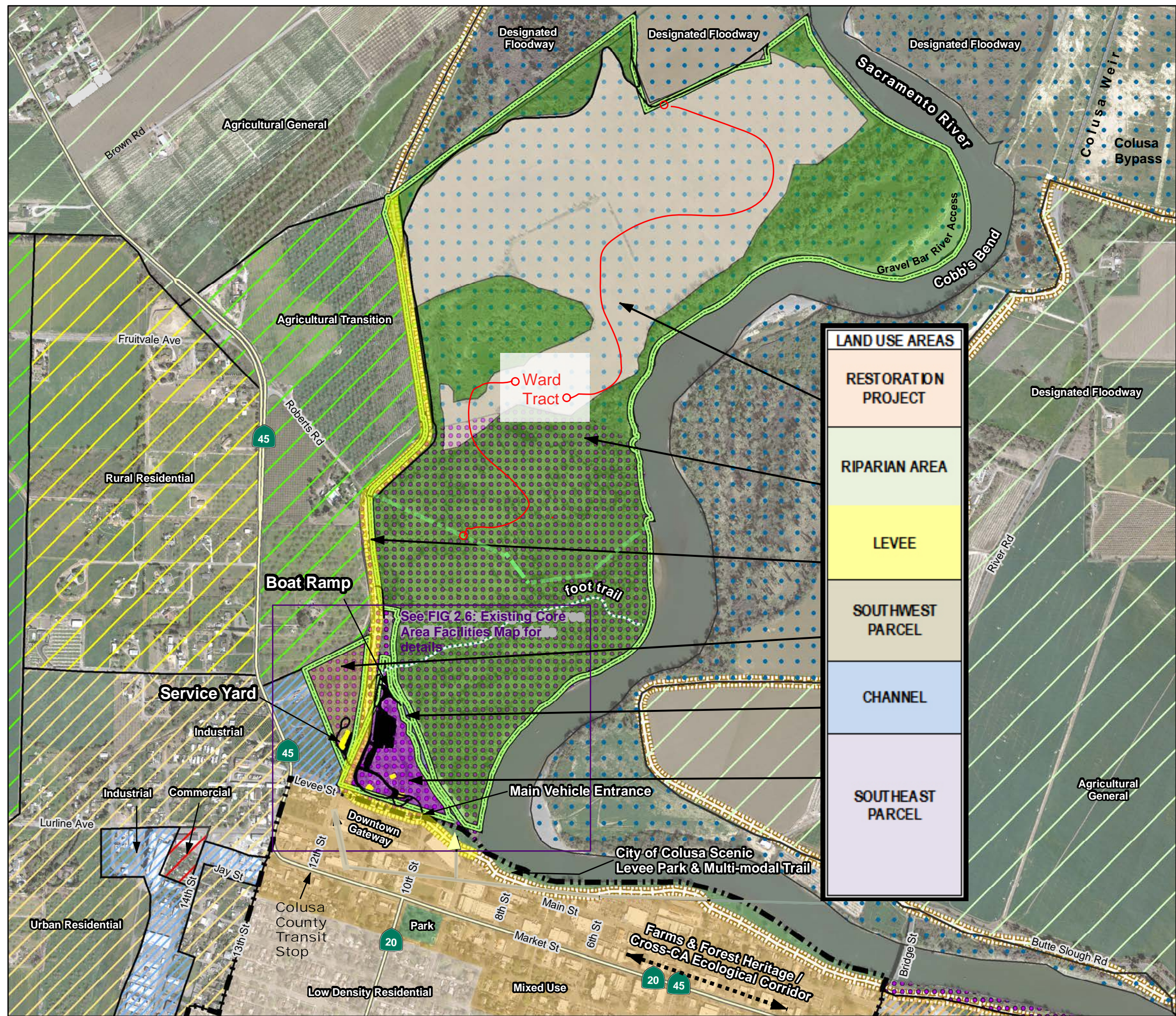
GENERAL PLAN SECTION

Date: 10/16/2014

Calif. Dept. of Parks & Recreation

DRAFT

COLUSA- SACRAMENTO RIVER STATE RECREATION AREA DRAFT GENERAL PLAN FIG2.3:EXISTING CIRCULATION, LAND USE, AND FACILITIES



County Land Use (2011)

- Agriculture Transition
- Agricultural General
- Rural Residential
- Urban Residential
- Mixed Use
- Commercial
- Industrial
- Designated Floodway
- Parks/Recreation

City Land Use Zones (2007)

- Low Density Residential
- Mixed Use
- Parks/Recreation
- Colusa City Boundary

Colusa-Sacramento River SRA

- State Park Boundaries
- Existing Park Buildings
- Existing Park Paved Areas

Highway

State Park Rd

State Park Trail

Levees

Data Sources:

- Mitigation Restoration - The Nature Conservancy and DWR.
- Levees - Sacramento River GIS.
- Image: April, 2008, 1 ft. DWR Sacramento River Flood Control Project.
- Park buildings, roads, campground: Calif. State Parks.
- Land Use Zones: Colusa County General Plan Land Use, May 5, 2011, City of Colusa General Plan, Oct 30, 2007.
- City Limits: City of Colusa General Plan

Map Location, showing Sacramento River Conservation Area

Scale

1:9,600

1 inch = 800 feet

Feet

0 400 800 1,200

NOTES:

Parcel boundaries are approximate and should not be considered legal descriptions. Maps are intended for study purposes only.

NORTHERN SERVICE CENTER

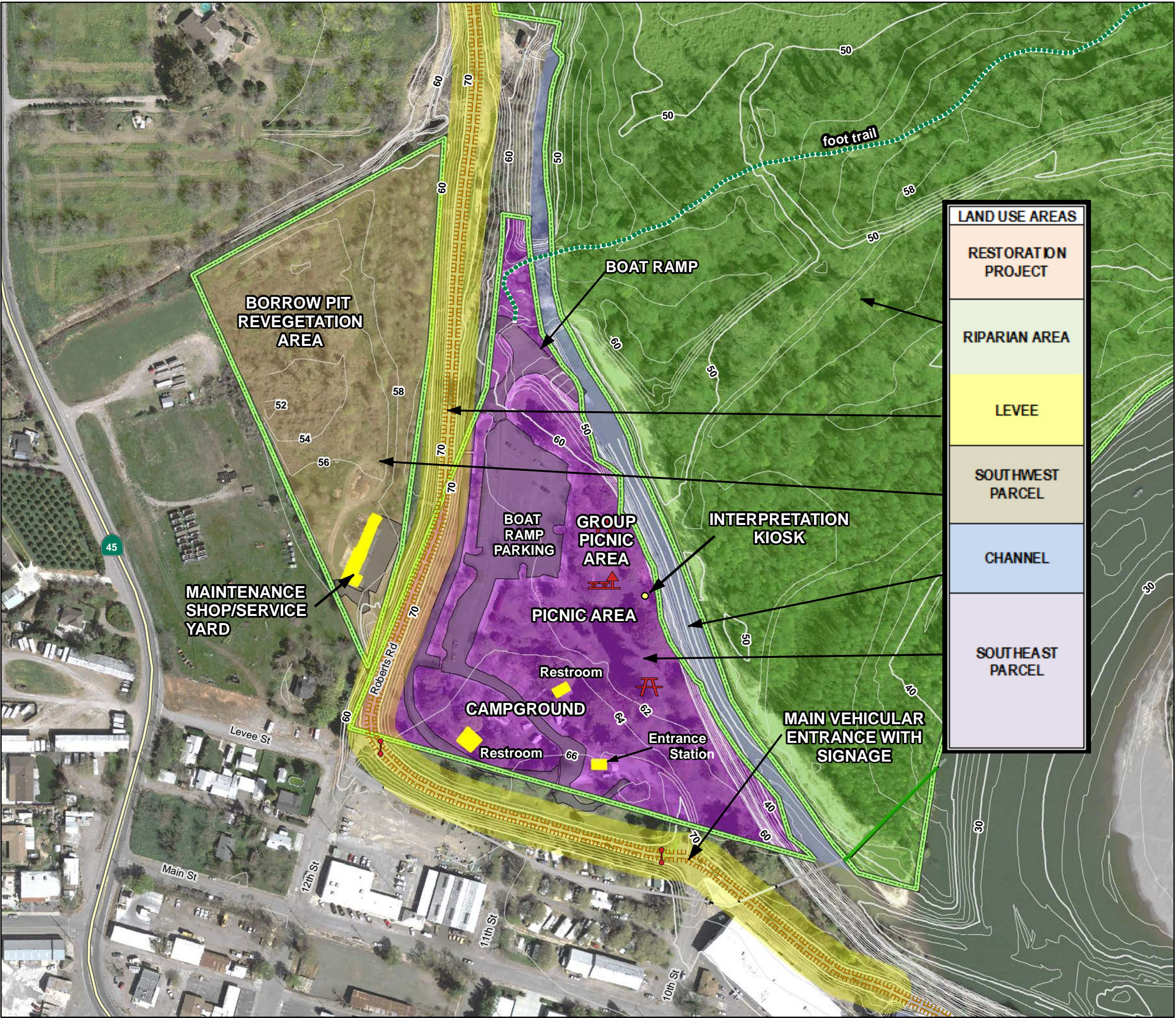
GENERAL PLAN SECTION

Date: 10/16/2014

Calif. Dept. of Parks & Recreation

DRAFT

COLUSA-
SACRAMENTO RIVER
STATE RECREATION AREA
DRAFT GENERAL PLAN
FIG 2.6: EXISTING CORE
AREA FACILITIES

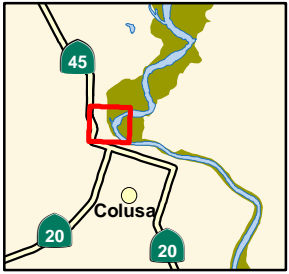


Legend

- State Park Boundaries
- Existing Park Paved Areas
- Existing Park Buildings
- Highway
- Foot Trail
- Picnic Areas, Developed Family Picnic Area
- Picnic Areas, Developed Group Picnic Area
- Interpretive Kiosk
- Gate
- Levees

Contour Interval: 2 ft

Map Location, showing
Sacramento River
Conservation Area



- Data Sources:
- 1) Levees - Sacramento River GIS.
 - 2) Park Facilities: CSU Chico GIS Center, and Calif State Parks.
 - 3) Contours: US Army Corps of Engineers.
 - 4) Image: April, 2008, 1 ft. DWR Sacramento River Flood Control Project.
 - 5) Park Boundaries, Roads, and Historic Landfill: Cal State Parks.

Scale
1:2,400
1 inch = 200 feet
Feet
0 200 400

NOTES:

Parcel boundaries are approximate and should not be considered legal descriptions. Maps are intended for study purposes only.

NORTHERN
SERVICE
CENTER

GENERAL
PLAN
SECTION

Date: 10/16/2014
Calif. Dept. of Parks &
Recreation

DRAFT



COLUSA-
SACRAMENTO RIVER
STATE RECREATION AREA
DRAFT GENERAL PLAN
FIG 2.7: HYDROLOGY

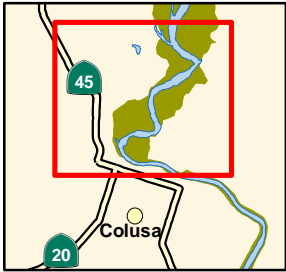


Legend

- Levees (Limit of Floodway)
- Large Woody Debris in River
- Bank Reinforcement
- State Park Boundaries
- DWR Flood Recurrence Model
- 5 foot contours
- Rivermiles
- Irrigation Well
- Flow Direction

Data Sources:
1) Levees - Sacramento River GIS.
2) DWR Flood Recurrence Interval: DWR Northern District.
3) Contours: 1 foot, resampled to 5 foot, Jones & Stokes.
4) Image: NAIP, 2012, 1 meter.
5) Large Woody Debris - Ayers Assoc. field inventory, 2006, & 2008 aerial interpretation, DPR.
6) Water / septic: Calif Dept of Parks and Recreation, Northern Buttes District.

Map Location, showing Sacramento River Conservation Area



Scale
1:10,500
1 inch = 875 feet
Feet
0 200 400 600 800 1,000



NOTES:
Parcel boundaries are approximate and should not be considered legal descriptions. Maps are intended for study purposes only.

Please see FIG 2.1: Location Map for extent of Sacramento River Watershed

NORTHERN
SERVICE
CENTER

GENERAL
PLAN
SECTION

Date: 02/01/2016

Calif. Dept. of Parks & Recreation

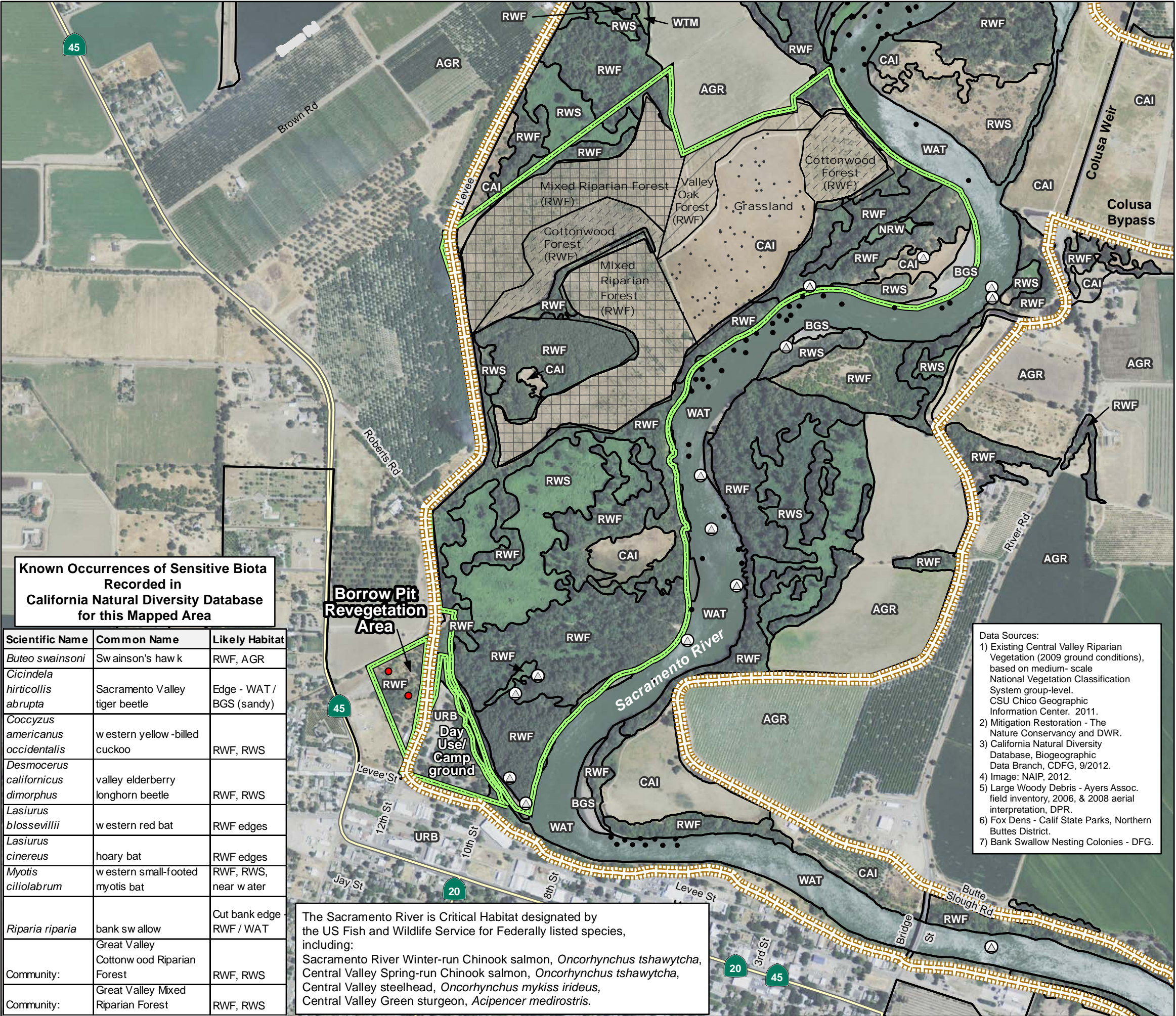
DRAFT



COLUSA-SACRAMENTO RIVER STATE RECREATION AREA

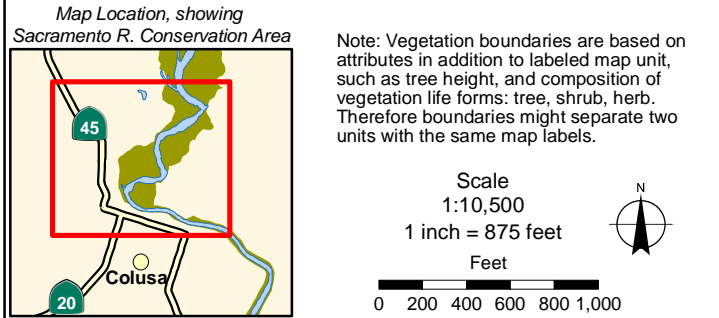
DRAFT GENERAL PLAN

FIG2.11: HABITAT AND WILDLIFE



- Central Valley Medium Scale Vegetation (2009) with sample wildlife species**
- AGR** Agriculture: foraging area for Swainson's hawk.
 - BGS** Barren / Gravel / Sand: river gravel beds are foraging areas for shorebirds such as spotted sandpipers.
 - CAI** California Naturalized Annual Perennial Grassland: foraging habitat for hawks, falcons, and grazing animals.
 - NRW** Naturalized Riparian Wetland:
 - RWF** Riparian Woodland Forest: nesting habitat for yellow billed cuckoo, Swainson's hawk, passerines. Habitat for seasonal migrants. Habitat for valley elderberry, and valley elderberry longhorn beetle. Cover for grazing mammals, predators, bats. Provides shade, root and woody debris elements of Shaded Riverine Aquatic habitat at river edge, essential for emigrating salmonids.
 - RWS** Riparian Wash Scrub: nesting habitat for willow flycatcher, other nesting and migrating passerines.
 - WAT** Water: the Sacramento River provides a migration corridor and nursery habitat for anadromous fish; salmon, steelhead, Sacramento splittail, striped bass, and sturgeon. Foraging habitat for bald eagles & osprey. Edge along cut banks provides nesting habitat for bank swallows.
 - URB** Urban landscapes: Human activity, minimal habitat value to wildlife.

- Mitigation Restoration Types**
- Grassland
 - Valley Oak Forest
 - Mixed Riparian Forest
 - Cottonwood Forest
 - Fox Dens
 - Bank Swallow Nesting Colonies
 - Levees
 - State Park Boundaries
 - Large Woody Debris in River



NOTES:
Parcel boundaries are approximate and should not be considered legal descriptions. Maps are intended for study purposes only.

PLANNING DIVISION

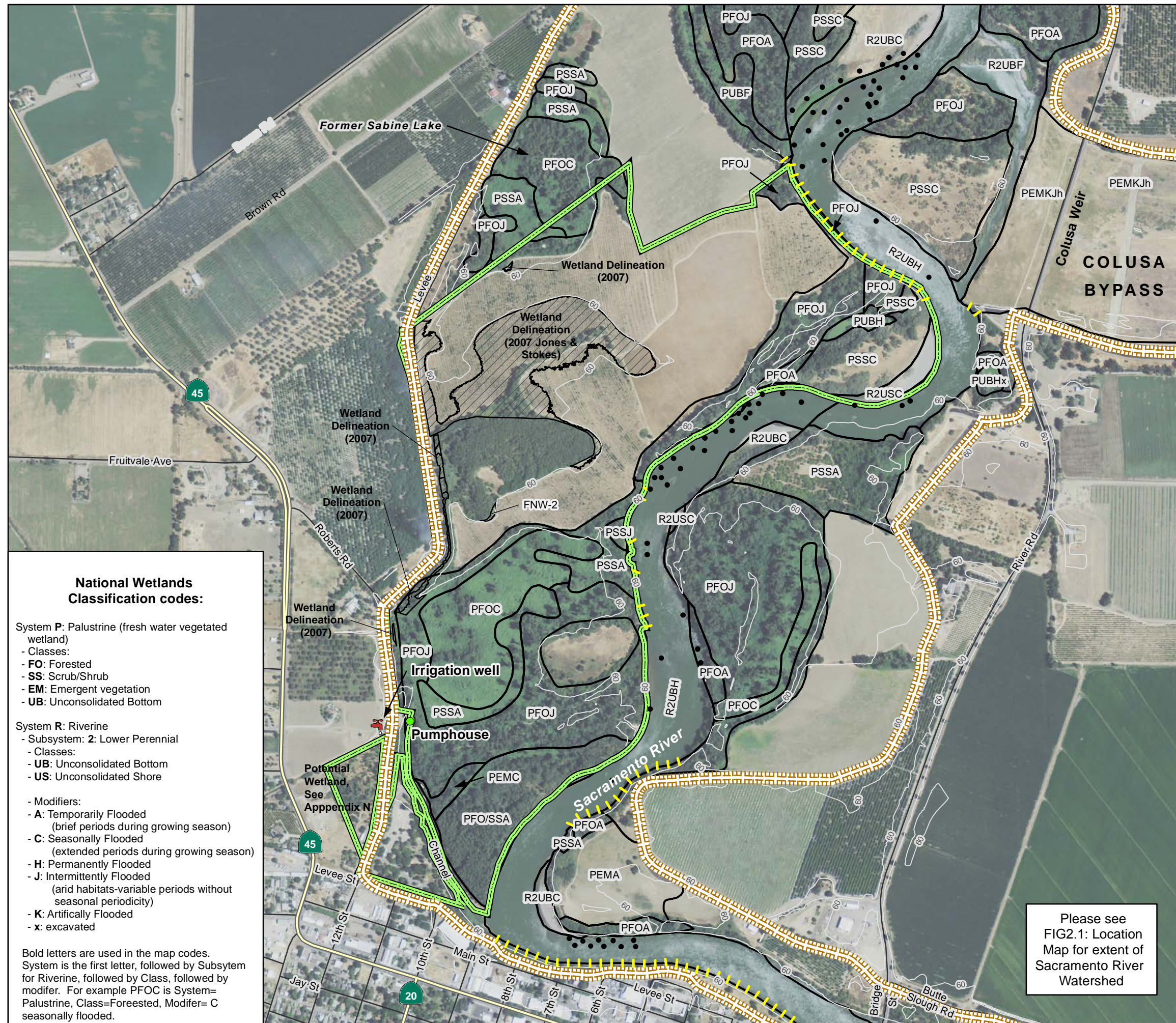
GENERAL PLAN SECTION

Date: 10/16/2014


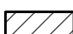





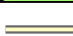

Calif. Dept. of Parks & Recreation

DRAFT

**COLUSA-
SACRAMENTO RIVER
STATE RECREATION AREA
DRAFT GENERAL PLAN
FIG 2.13: WETLAND RESOURCES**



Legend

-  National Wetlands Inventory
-  2007 Wetland Delineation Prior to Revegetation
-  Levees (Limit of Flood Plain)
-  Large Woody Debris in River
-  Bank Reinforcement
-  State Park Boundaries
-  Highway
-  Local Roads
-  60' Contour

NOTE: ALL PARK LAND NORTHEAST OF THE CHANNEL HAS BEEN DELINEATED AS OTHER WATERS OF THE UNITED STATES BY THE DEPARTMENT OF WATER RESOURCES, 2007 (APPENDIX B4).


Data Sources:

- 1) NWI: US Fish and Wildlife Service, original image date 1983, boundaries adjusted to April 2008 image.
- 2) Wetlands Delineation based on soil sampling - 2007 Jones & Stokes.
- 3) Levees - Sacramento River GIS.
- 4) Image: NAIP 2012.
- 5) Large Woody Debris - Ayers Assoc. field inventory, 2006, & 2008 aerial interpretation, DPR.

Scale
1:10,500

1 inch = 875 feet

Feet



0 200 400 600 800 1,000



NOTES:

Parcel boundaries are approximate and should not be considered legal descriptions. Maps are intended for study purposes only.

NORTHERN
SERVICE
CENTER

GENERAL
PLAN
SECTION

Date: 10/16/2014

Calif. Dept. of Parks &
Recreation

DRAFT



COLUSA-SACRAMENTO RIVER STATE RECREATION AREA DRAFT GENERAL PLAN

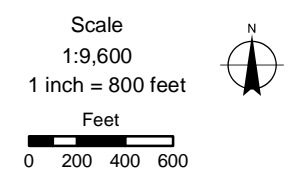
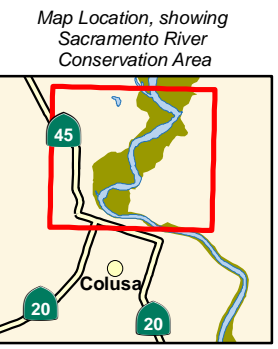
FIG3.1: PARKWIDE SITE ANALYSIS



Legend

- DWR 25 Year Erosion Projection
- DWR Flood Recurrence Model
- Levees
- Bank Reinforcement
- Gates
- Highway
- State Park Rd
- State Park Trail
- Colusa City Limit
- Other Public Lands
- Ward Tract DWR Mitigation Restoration Area
- Ward Tract Mitigation Habitat Types:**
 - Grassland
 - Valley Oak Forest
 - Mixed Riparian Forest
 - Cottonwood Forest
 - State Park Boundaries



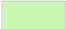

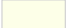




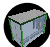

- Data Sources:
- 1) Levees - Sacramento River GIS.
 - 2) Flood Recurrence Interval & 25 year erosion projections: DWR Northern District.
 - 3) Proposed Boat Ramp / Parking: Moffatt & Nichol, Sept, 2012.
 - 4) Image: NAIP, 2012.
 - 5) City Limits: Colusa General Plan.
 - 6) Contours: USACOE, 2002.
 - 7) Ward Tract Mitigation: DWR.
 - 8) Public Lands: GreenInfo, Inc CPAD 1.8, July 2012, & Sacramento River GIS, 2001, & Calif Dept of Fish & Wildlife.



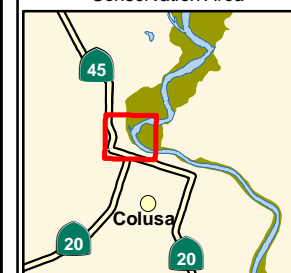
NOTES:
Parcel boundaries are approximate and should not be considered legal descriptions. Maps are intended for study purposes only.

PLANNING DIVISION ----- GENERAL PLAN SECTION	Date: 10/16/2014	
	California Department of Parks & Recreation DRAFT	

Legend

-  Levees
-  DWR 25 Year Erosion Projection
- Elevation Zones:**
 -  More than 60 ft
 -  50-60 ft
 -  40-50 ft
 -  Less than 40 ft
 -  Steep slopes
-  Colusa City Limit
-  Gates
-  Bus Stop
-  Signalized Traffic Light

Map Location, showing
Sacramento River
Conservation Area



Scale
1:3,000
1 inch = 250 feet

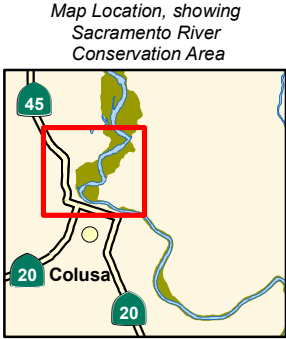
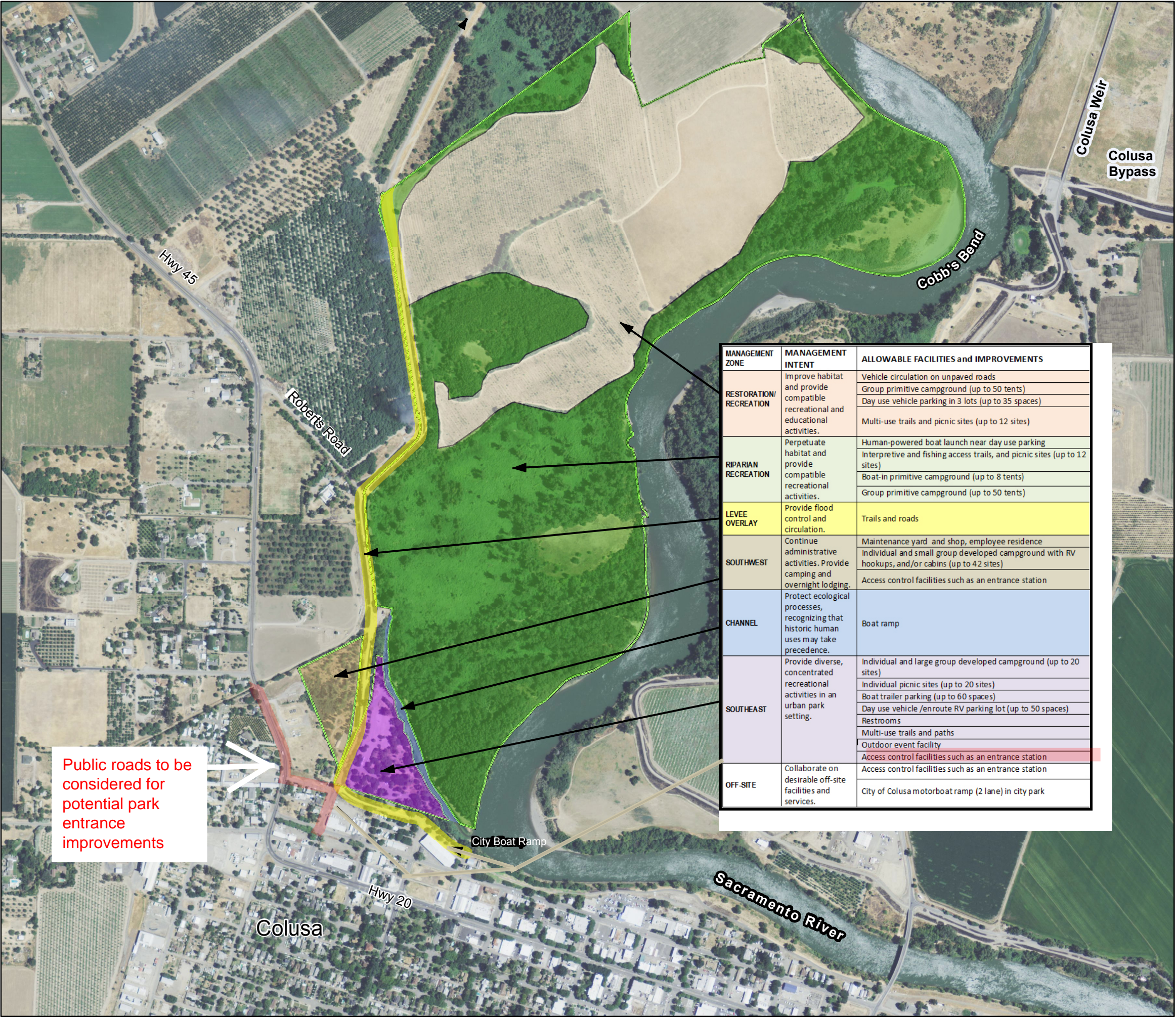
Feet

Parcel boundaries are approximate and should not be considered legal descriptions. Maps are intended for study purposes only.

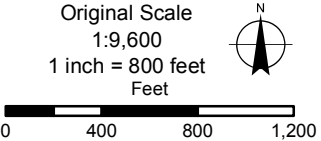
DRAFT



COLUSA-
SACRAMENTO RIVER
STATE RECREATION AREA
DRAFT GENERAL PLAN
FIG 4.1: PREFERRED PLAN



Data Sources:
1) Levees - Sacramento River GIS.
2) Image: April, 2008, 1 ft. DWR Sacramento River Flood Control Project.



NOTES:
Parcel boundaries are approximate and should not be considered legal descriptions. Maps are intended for study purposes only.

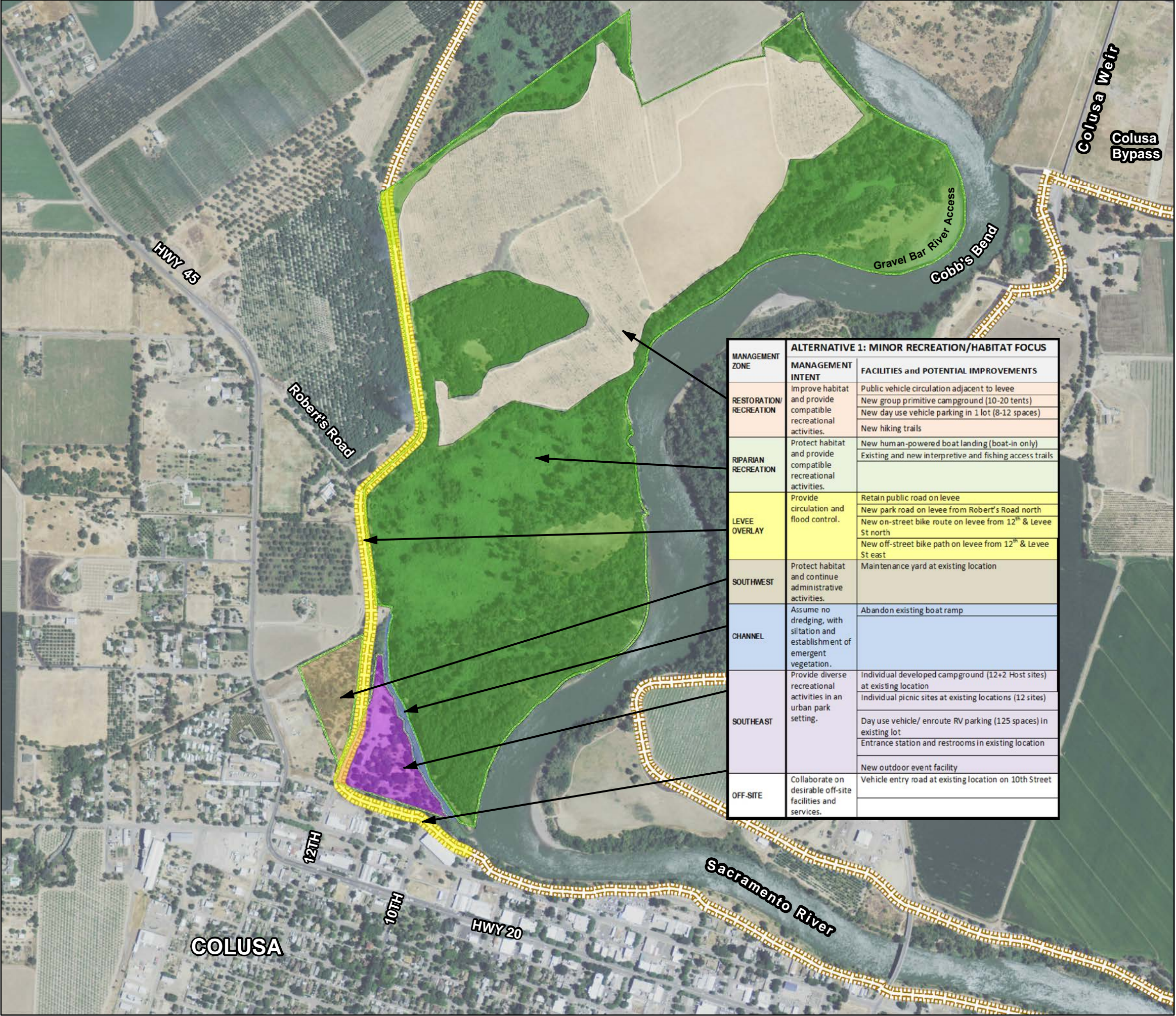
NORTHERN
SERVICE
CENTER

GENERAL
PLAN
SECTION

Date: 03/12/2015
Calif. Dept. of Parks &
Recreation

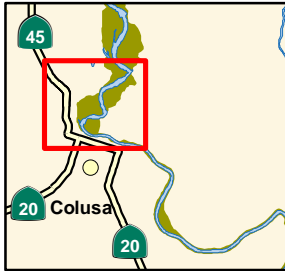
DRAFT

COLUSA-
SACRAMENTO RIVER STATE
RECREATION AREA DRAFT
GENERAL PLAN FIGURE 5.1
MINOR RECREATION USE HABITAT
FOCUS ALTERNATIVE

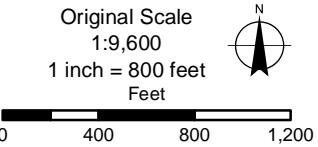


MANAGEMENT ZONE	ALTERNATIVE 1: MINOR RECREATION/HABITAT FOCUS	
	MANAGEMENT INTENT	FACILITIES and POTENTIAL IMPROVEMENTS
RESTORATION/ RECREATION	Improve habitat and provide compatible recreational activities.	Public vehicle circulation adjacent to levee
		New group primitive campground (10-20 tents)
		New day use vehicle parking in 1 lot (8-12 spaces)
		New hiking trails
RIPARIAN RECREATION	Protect habitat and provide compatible recreational activities.	New human-powered boat landing (boat-in only)
		Existing and new interpretive and fishing access trails
LEVEE OVERLAY	Provide circulation and flood control.	Retain public road on levee
		New park road on levee from Robert's Road north
		New on-street bike route on levee from 12 th & Levee St north
		New off-street bike path on levee from 12 th & Levee St east
SOUTHWEST	Protect habitat and continue administrative activities.	Maintenance yard at existing location
CHANNEL	Assume no dredging, with siltation and establishment of emergent vegetation.	Abandon existing boat ramp
SOUTHEAST	Provide diverse recreational activities in an urban park setting.	Individual developed campground (12+2 Host sites) at existing location
		Individual picnic sites at existing locations (12 sites)
		Day use vehicle/ enroute RV parking (125 spaces) in existing lot
		Entrance station and restrooms in existing location
OFF-SITE	Collaborate on desirable off-site facilities and services.	New outdoor event facility
		Vehicle entry road at existing location on 10th Street

Map Location, showing Sacramento River Conservation Area



Data Sources:
1) Levees - Sacramento River GIS.
2) Image: NAIP, 2012.



NOTES:

Parcel boundaries are approximate and should not be considered legal descriptions. Maps are intended for study purposes only.

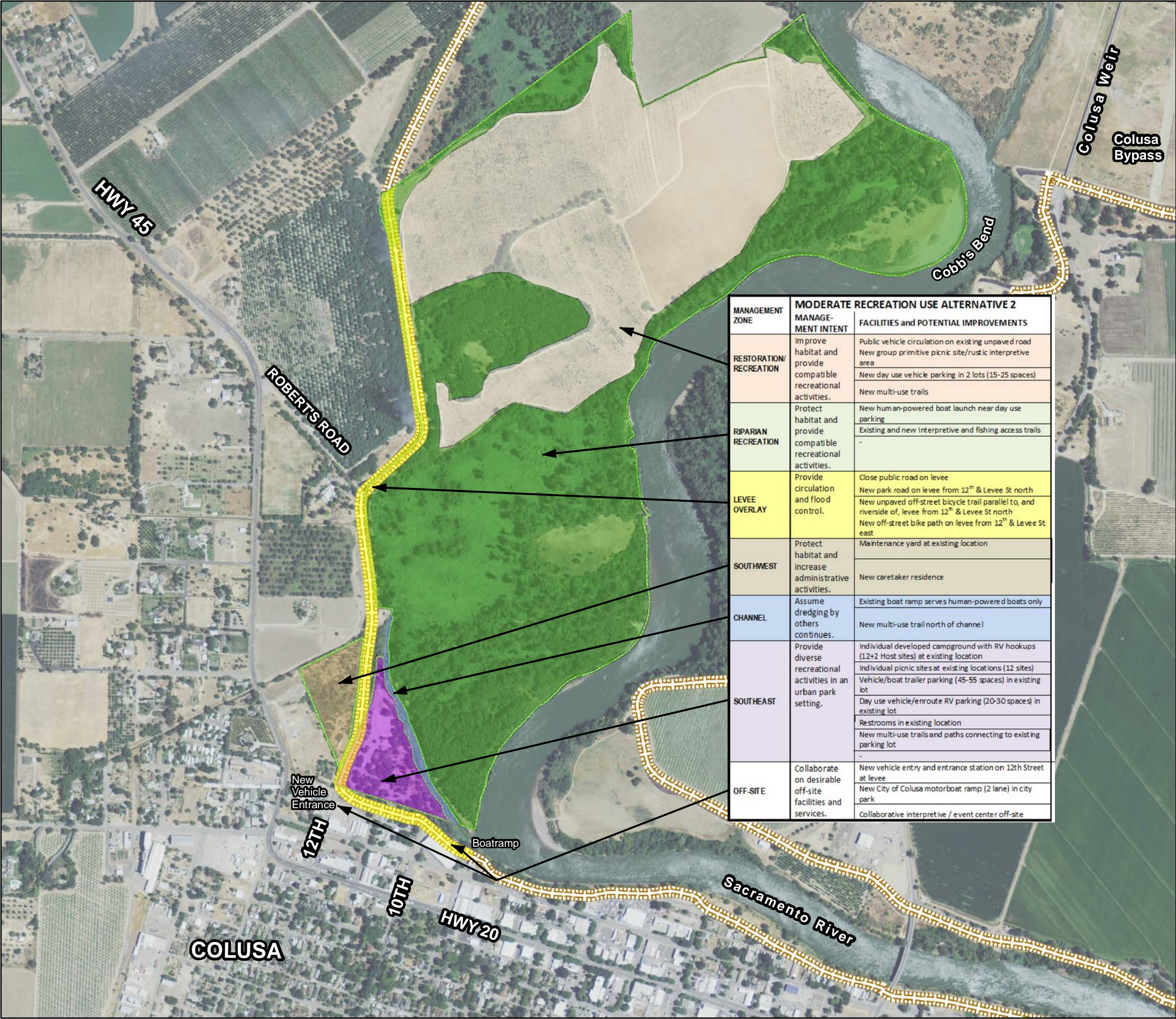
NORTHERN
SERVICE
CENTER

GENERAL
PLAN
SECTION

Date: 6/2/2014
Calif. Dept. of Parks &
Recreation

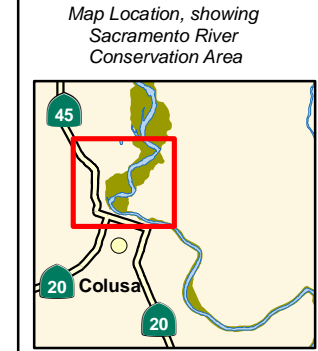
DRAFT





**COLUSA -
SACRAMENTO RIVER
STATE RECREATION AREA
DRAFT GENERAL PLAN
FIGURE 5.2 MODERATE
RECREATION USE ALTERNATIVE**

MANAGEMENT ZONE	MANAGEMENT INTENT	FACILITIES and POTENTIAL IMPROVEMENTS
RESTORATION/ RECREATION	Improve habitat and provide compatible recreational activities.	Public vehicle circulation on existing unpaved road
		New group primitive picnic site/rustic interpretive area
		New day use vehicle parking in 2 lots (15-25 spaces)
RIPARIAN RECREATION	Protect habitat and provide compatible recreational activities.	New multi-use trails
		New human-powered boat launch near day use parking
		Existing and new Interpretive and fishing access trails
LEVEE OVERLAY	Provide circulation and flood control.	-
		Close public road on levee
		New park road on levee from 12 th & Levee St north
SOUTHWEST	Protect habitat and increase administrative activities.	New unpaved off-street bicycle trail parallel to, and riverside of, levee from 12 th & Levee St north
		New off-street bike path on levee from 12 th & Levee St east
		Maintenance yard at existing location
CHANNEL	Assume dredging by others continues.	New caretaker residence
		Existing boat ramp serves human-powered boats only
		New multi-use trail north of channel
SOUTHEAST	Provide diverse recreational activities in an urban park setting.	Individual developed campground with RV hookups (12+2 Host sites) at existing location
		Individual picnic sites at existing locations (12 sites)
		Vehicle/boat trailer parking (45-55 spaces) in existing lot
OFF-SITE	Collaborate on desirable off-site facilities and services.	Day use vehicle/enroute RV parking (20-30 spaces) in existing lot
		Restrooms in existing location
		New multi-use trails and paths connecting to existing parking lot
OFF-SITE	Collaborate on desirable off-site facilities and services.	-
		New vehicle entry and entrance station on 12th Street at levee
		New City of Colusa motorboat ramp (2 lane) in city park
OFF-SITE	Collaborate on desirable off-site facilities and services.	Collaborative interpretive / event center off-site



Data Sources:
1) Levees - Sacramento River GIS.
2) Image: NAIP, 2012.

Scale
1:9,600
1 inch = 800 feet



NOTES:
Parcel boundaries are approximate and should not be considered legal descriptions. Maps are intended for study purposes only.

NORTHERN
SERVICE
CENTER

GENERAL
PLAN
SECTION


















Date: 6/2/2014

California Department
of Parks & Recreation

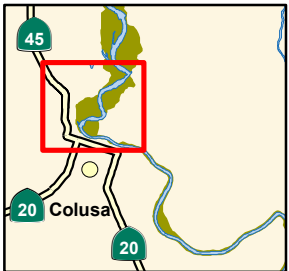
DRAFT

COLUSA-
SACRAMENTO RIVER
STATE RECREATION AREA
DRAFT GENERAL PLAN
APPENDIX L
PARKWIDE CONCEPT STUDY

Legend

- | | | | |
|---|---------------------------------|---|----------------------------|
|  | Viewpoint |  | Primitive Tent Camp Ground |
|  | Parking |  | Fishing Access |
|  | Picnic Sites |  | Gate |
|  | Recreational Vehicle Campground |  | Interpretive Trail |
|  | Human-Powered Boat Launch |  | Boat Launch |
|  | Entrance Station |  | Levees |
|  | PAVED ROAD | | |
|  | TRAIL | | |
|  | UNPAVED ROAD | | |
|  | OFF ROAD BIKE TRAIL | | |
|  | ON STREET BIKE ROUTE | | |

Map Location, showing
Sacramento River
Conservation Area



Data Sources:
1) Levees - Sacramento River GIS.
2) Image: NAIP, 2012.
3) Land Use Zones: Colusa County General Plan
Land Use, May 5, 2011, City of Colusa General
Plan, Oct 30, 2007.

Original Scale
1:9,600
1 inch = 800 feet
Feet
0 400 800 1,200



NOTES:

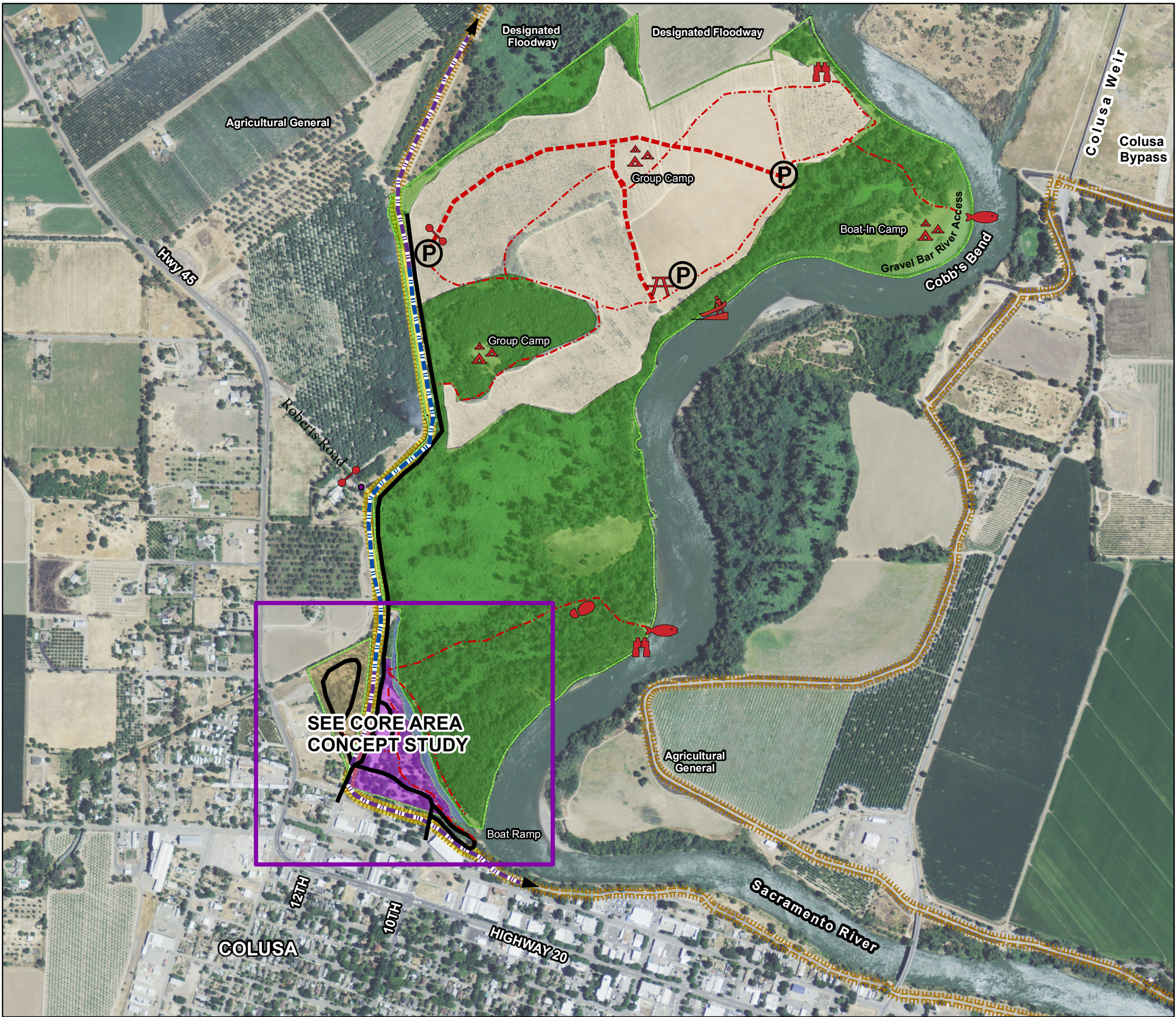
Parcel boundaries are approximate and should not be considered legal descriptions. Maps are intended for study purposes only.

NORTHERN
SERVICE
CENTER

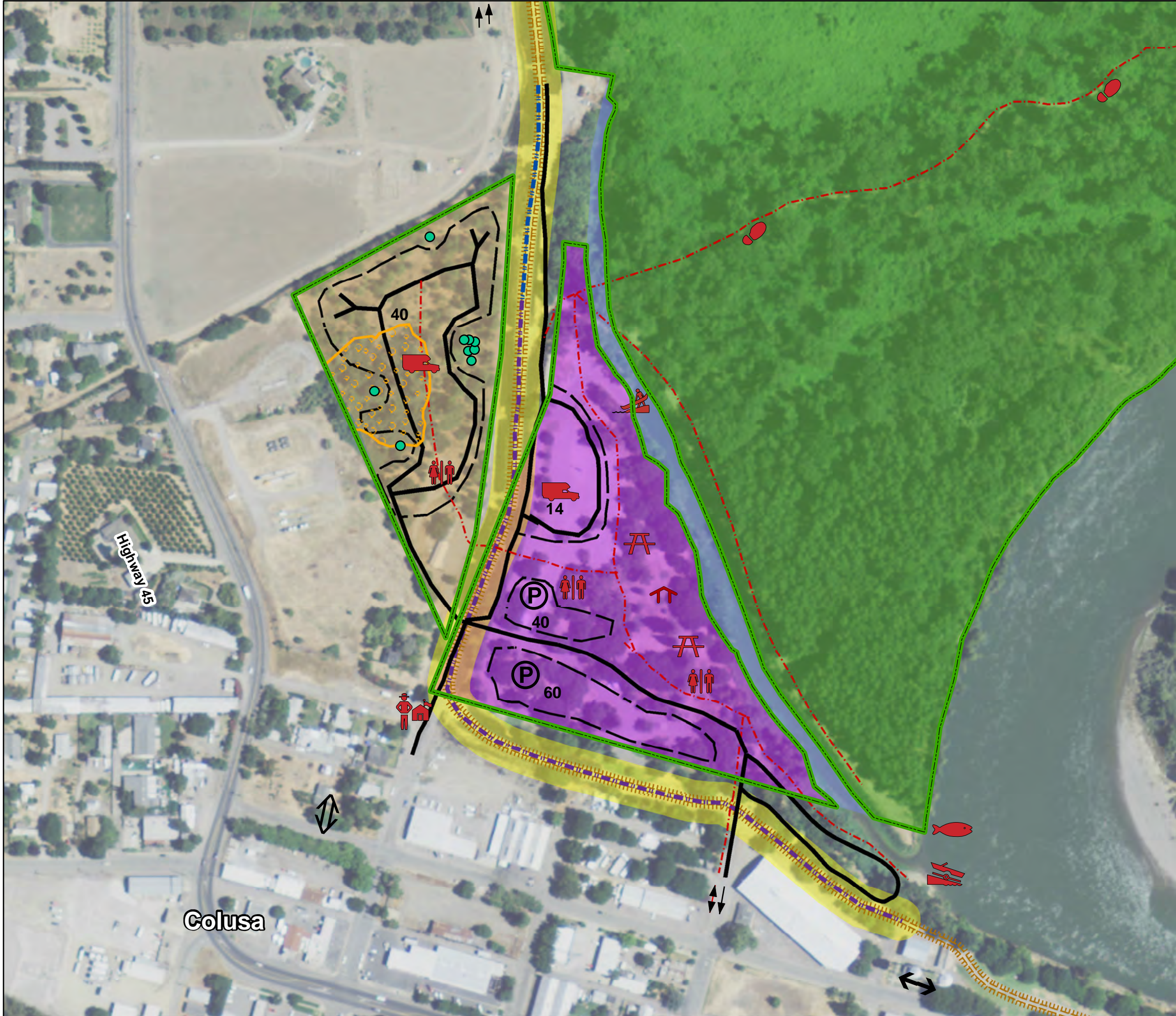
GENERAL
PLAN
SECTION

Date: 03/12/2015
California Department of
Parks & Recreation

DRAFT



COLUSA-SACRAMENTO RIVER STATE RECREATION AREA DRAFT GENERAL PLAN APPENDIX L CORE AREA CONCEPT STUDY



LEGEND

Viewpoint

Parking Lot

Picnic Facilities

Recreational Vehicle Campground

Human Powered Boat Launch

PAVED ROAD

TRAIL

UNPAVED ROAD

OFF ROAD BIKE TRAIL

ON STREET BIKE ROUTE

PARKING FACILITY LIMIT

Primitive Tent Camp Ground

Fishing Access

Gate

Interpretive Trail

Entrance Station

Boat Launch

Restroom

Outdoor Event Facility

Levees

Elderberry

Remnant Riparian

Map Location, showing Sacramento River Conservation Area

Data Sources:
1) Levees - Sacramento River GIS.
2) Image: NAIP, 2012

Original Scale
1:2,750
1 inch = 229 feet
Feet

NOTES:
Parcel boundaries are approximate and should not be considered legal descriptions. Maps are intended for study purposes only.

NORTHERN SERVICE CENTER

GENERAL PLAN SECTION

Date: 8/10/2015
California Department of Parks & Recreation
DRAFT