

BIG BASIN REDWOODS STATE PARK DRAFT GENERAL PLAN PREFERRED ALTERNATIVE WILDERNESS & BACKCOUNTRY

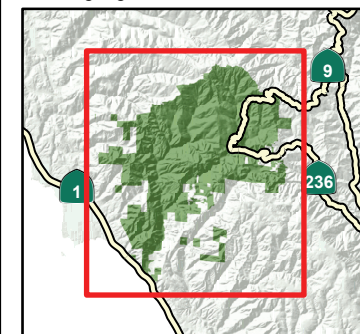
WILDERNESS / BACKCOUNTRY GOALS

- Management intent is to preserve and protect the wild and remote natural landscape of the wilderness and backcountry areas, with opportunities for visitor experiences.
- Complete and maintain resource inventories and prepare management plans for long-term public access, protection and interpretation of significant resources.
- Prepare an Interpretation Master Plan to provide further parkwide guidance and recommendations for interpreting the park's history, resources and recreational opportunities.
- Develop additional loop trails for hikers and equestrians, and establish sustainable creek crossings and drainages to reduce erosion and stream sedimentation.
- Make provisions for low impact recreational use of the backcountry, with additional trailhead parking and trail camps, and multi-use trails. Develop a park-wide Roads and Trails Management Plan, with goals for regional trail connections and linkages from the ridgetops to the coast highway. Consider a potential multi-use trail connection outside the state wilderness between Hihn Hammond Road/Trail and the Skyline-to-the-Sea Trail at West Waddell Creek.

LEGEND

- | | | | |
|--|------------------------------|--|-------------------------------------|
| | Museum/Visitor Center | | Hiking Trail |
| | Campfire Center | | Horses Allowed |
| | Campground | | Unpaved Roads |
| | Group Camp | | Paved Roads |
| | Horse Camp | | State Highway |
| | Trail Camp | | BIG BASIN REDWOODS STATE PARK |
| | Office / Visitor Center | | West Waddell Creek State Wilderness |
| | Proposed Wilderness Addition | | Nearby State Parks |
| | | | County Boundary |
| | | | Stream, Perennial |
| | | | Stream, Intermittent |

Map Location, showing Big Basin Redwoods SP Area



Scale
1:56,586
1 inch = 4,715 feet
Miles
0 0.5 1

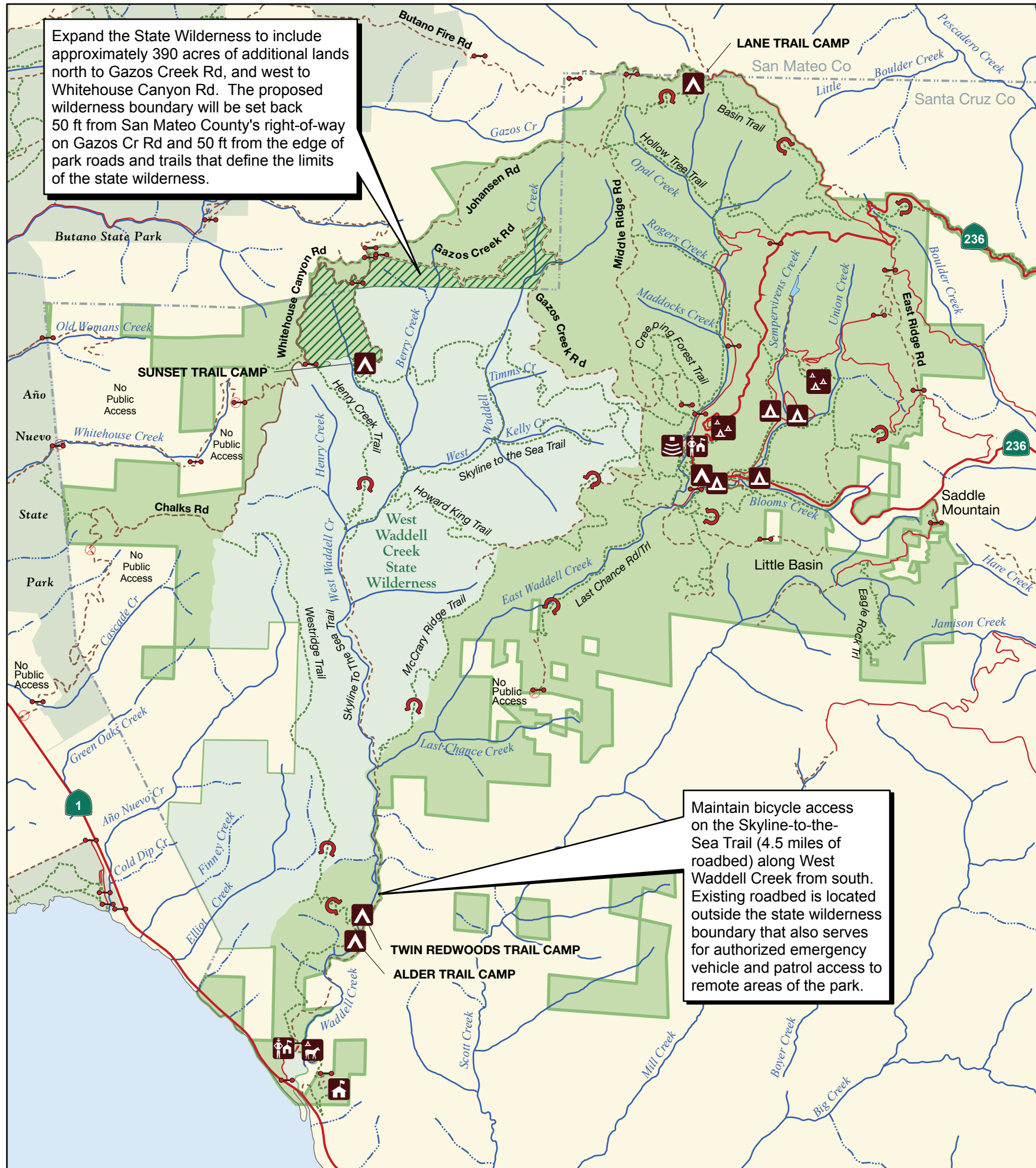
NOTES:

Parcel boundaries are approximate and should not be considered legal descriptions. Maps are intended for study purposes only.

PLANNING DIVISION
GENERAL PLAN SECTION

Date 10/06/11
Sources:
Calif. Dept. of Parks & Recreation

Figure 22



Expand the State Wilderness to include approximately 390 acres of additional lands north to Gazos Creek Rd, and west to Whitehouse Canyon Rd. The proposed wilderness boundary will be set back 50 ft from San Mateo County's right-of-way on Gazos Cr Rd and 50 ft from the edge of park roads and trails that define the limits of the state wilderness.

Maintain bicycle access on the Skyline-to-the-Sea Trail (4.5 miles of roadbed) along West Waddell Creek from south. Existing roadbed is located outside the state wilderness boundary that also serves for authorized emergency vehicle and patrol access to remote areas of the park.